

## Motul Portuguese Round, 1-3 October 2021

### Results Race 1

Laps 17 = 78,064 Km - Time of Race 29'52.761 - Avg. 156,758 km/h

Pos	Grid	No. Rider	Nat	Team	Bike	Class	LL	Gap	Rel.	Fastest Lap	Speed	Qualifying	Speed
1	1	<b>16 J. CLUZEL</b>	FRA	GMT94 Yamaha	Yamaha YZF R6		17			1'44.783	268,2	1'43.908	272,3
2	4	<b>81 M. GONZALEZ</b>	ESP	Yamaha ParkinGo Team	Yamaha YZF R6		17	<b>0.389</b>	0.389	1'44.814	274,3	1'44.033	268,2
3	2	<b>77 D. AEGERTER</b>	SUI	Ten Kate Racing Yamaha	Yamaha YZF R6		17	<b>0.565</b>	0.176	1'44.935	274,3	1'43.926	266,9
4	6	<b>3 R. DE ROSA</b>	ITA	Orelac Racing VerdNatura	Kawasaki ZX-6R		17	<b>0.669</b>	0.104	1'44.941	272,3	1'44.104	267,6
5	3	<b>66 N. TUULI</b>	FIN	MV Agusta Corse Clienti	MV Agusta F3 675		17	<b>1.099</b>	0.430	1'44.822	270,2	1'43.954	264,3
6	7	<b>4 S. ODENDAAL</b>	RSA	Evan Bros. WorldSSP Yamaha Team	Yamaha YZF R6		17	<b>1.486</b>	0.387	1'44.942	272,9	1'44.395	272,3
7	13	<b>21 R. KRUMMENACHER</b>	SUI	CM Racing	Yamaha YZF R6		17	<b>5.519</b>	4.033	1'45.152	270,9	1'44.890	271,6
8	5	<b>61 C. ONCU</b>	TUR	Kawasaki Puccetti Racing	Kawasaki ZX-6R		17	<b>9.051</b>	3.532	1'45.332	269,6	1'44.077	273,6
9	9	<b>5 P. OETTL</b>	GER	Kawasaki Puccetti Racing	Kawasaki ZX-6R		17	<b>9.272</b>	0.221	1'45.541	276,4	1'44.458	272,3
10	10	<b>91 Y. MONTELLA</b>	ITA	GMT94 Yamaha	Yamaha YZF R6		17	<b>9.464</b>	0.192	1'45.575	273,6	1'44.650	268,2
11	16	<b>56 P. SEBESTYEN</b>	HUN	Evan Bros. WorldSSP Yamaha Team	Yamaha YZF R6		17	<b>18.124</b>	8.660	1'45.705	272,3	1'45.063	267,6
12	12	<b>52 P. HOBELSBERGER</b>	GER	Bonovo MGM Racing	Yamaha YZF R6		17	<b>18.372</b>	0.248	1'45.607	273,6	1'44.732	272,9
13	15	<b>38 H. SOOMER</b>	EST	Kallio Racing	Yamaha YZF R6		17	<b>18.698</b>	0.326	1'45.978	272,9	1'44.975	270,2
14	8	<b>94 F. CARICASULO</b>	ITA	Biblion Iberica Yamaha Motoxrcing	Yamaha YZF R6		17	<b>22.048</b>	3.350	1'45.511	275,7	1'44.432	275,0
15	19	<b>50 O. VOSTATEK</b>	CZE	IXS-YART Yamaha	Yamaha YZF R6		17	<b>32.635</b>	10.587	1'46.267	271,6	1'45.473	272,9
16	22	<b>24 L. TACCINI</b>	ITA	Orelac Racing VerdNatura	Kawasaki ZX-6R	*	17	<b>32.649</b>	0.014	1'46.461	270,2	1'45.794	269,6
17	18	<b>22 F. FULIGNI</b>	ITA	VFT Racing	Yamaha YZF R6		17	<b>33.216</b>	0.567	1'46.416	269,6	1'45.280	266,9
18	27	<b>6 M. HERRERA</b>	ESP	Biblion Iberica Yamaha Motoxrcing	Yamaha YZF R6	*	17	<b>38.180</b>	4.964	1'46.837	270,2	1'46.651	268,2
19	17	<b>25 M. BRENNER</b>	SUI	VFT Racing	Yamaha YZF R6		17	<b>38.225</b>	0.045	1'46.172	270,2	1'45.246	269,6
20	26	<b>92 B. VAN EERDE</b>	AUS	IXS-YART Yamaha	Yamaha YZF R6		17	<b>38.614</b>	0.389	1'46.777	272,3	1'46.650	265,6
21	23	<b>95 V. TAKALA</b>	FIN	Kallio Racing	Yamaha YZF R6		17	<b>38.784</b>	0.170	1'46.707	267,6	1'45.936	269,6
22	24	<b>55 G. HENDRA PRATAMA</b>	INA	Ten Kate Racing Yamaha	Yamaha YZF R6		17	<b>39.682</b>	0.898	1'46.965	270,2	1'46.495	267,6
23	25	<b>42 S. FROSSARD</b>	SUI	Moto Team Jura Vitesse	Yamaha YZF R6	*	17	<b>53.667</b>	13.985	1'47.297	273,6	1'46.642	272,3
24	28	<b>2 L. MONTELLA</b>	ITA	Chiodo Moto Racing	Yamaha YZF R6	*	17	<b>1'00.976</b>	7.309	1'48.020	266,9	1'47.411	268,9
25	30	<b>82 P. ROMERO BARBOSA</b>	POR	G.A.P. MOTOZOO Racing by Puccetti	Kawasaki ZX-6R	*	17	<b>1'11.124</b>	10.148	1'48.567	269,6	1'47.728	261,1
26	21	<b>40 U. ORRADRE</b>	ESP	Yamaha MS Racing	Yamaha YZF R6		15	<b>2 Laps</b>	2 Laps	1'47.044	270,2	1'45.567	268,2
-----Not Classified-----													
RET	11	<b>28 G. VAN STRAALEN</b>	NED	EAB Racing Team	Yamaha YZF R6		14	<b>3 Laps</b>		1'45.725	270,2	1'44.667	265,6
RET	20	<b>96 D. SANCHIS MARTINEZ</b>	ESP	WRP Wepol Racing	Yamaha YZF R6		5	<b>12 Laps</b>		1'46.580	277,8	1'45.540	261,7
RET	14	<b>34 K. MANFREDI</b>	ITA	Allogo Racing Team	Yamaha YZF R6	*	4	<b>13 Laps</b>		1'46.388	270,2	1'44.925	264,9
RET	29	<b>69 E. MONTERO HUERTA</b>	ESP	DK Motorsport	Yamaha YZF R6	*	2	<b>15 Laps</b>		1'49.623	265,6	1'47.420	258,0

AIR	Humidity:	60%	Temp:	25°C
TRACK	Condition:	Dry	Temp:	42°C

Records	Pole (SP)	2021	J.Cluzel	1'43.908	159,09 Km/h
	Race (RC)	2010	M.Pirro	1'45.180	157,17 Km/h
	All Times (SP)	2021	J.Cluzel	1'43.908	159,09 Km/h
Race Fastest Lap	(New Record)	Lap 17	J.Cluzel	1'44.783	157,77 Km/h

LAP LEADERS				
No. Rider	From	To	Laps	Total
77 D. AEGERTER	1	1	1	
61 C. ONCU	2	2	1	1
16 J. CLUZEL	3	3	1	
81 M. GONZALEZ	4	5	2	
16 J. CLUZEL	6	9	4	
77 D. AEGERTER	10	10	1	2
16 J. CLUZEL	11	12	2	
81 M. GONZALEZ	13	13	1	
16 J. CLUZEL	14	14	1	
81 M. GONZALEZ	15	15	1	4
16 J. CLUZEL	16	17	2	10

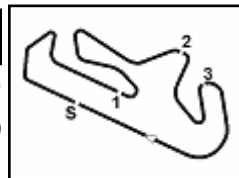
TOTAL LEADER LAPS				
No. Rider	Laps			
77 D. AEGERTER	123	3	R. DE ROSA	6
4 S. ODENDAAL	53	61	C. ONCU	5
5 P. OETTL	37	85	L. ARBEL	4
81 M. GONZALEZ	21			
16 J. CLUZEL	20			
21 R. KRUMMENACHER	12			
71 C. BERGMAN	10			

\* WorldSSP Challenge

02/10/2021 15:15 15:47 The results are provisional until the end of the time limit for protests and appeals and the completion of the technical checks.

These data/results cannot be reproduced, stored and/or transmitted in whole or in part by any manner of electronic, mechanical, photocopying, recording, broadcasting or otherwise now known or herein after developed without the previous express consent by the copyright owner, except for reproduction in daily press and regular printed publications on sale to the public within 60 days of the event related to those data/results and always provided that copyright symbol appears together as follows below.

© DORNA WSBK ORGANIZATION Srl 2021



## Motul Portuguese Round, 1-3 October 2021

### Results Race 1

#### Race Highlights

Time	No. Rider	Description
15.13.11		Warm-up Lap Start
15.15.55		Start
15.21.09	69 Montero Huerta	Crashed - Turn 11
15.21.20	40 Orradre	Entered Pits
15.22.07	69 Montero Huerta	Not Actively Competing
15.22.41	96 Sanchis Martinez	Double Long Lap Penalty - Jump Start
15.24.07	96 Sanchis Martinez	Crashed - Turn 5
15.24.19	96 Sanchis Martinez	Re-joined
15.24.32	34 Manfredi	Technical Problem - Turn 13
15.24.50	34 Manfredi	Not Actively Competing
15.25.33	40 Orradre	Exited Pits
15.25.55	96 Sanchis Martinez	Entered Pits
15.27.12	96 Sanchis Martinez	Retired
15.32.45	25 Brenner	On Asphalt - Re-Joined - Turn 5
15.35.14		2/3 of Race Distance Completed
15.41.52	28 van Straalen	Technical Problem - Turn 5
15.42.30	28 van Straalen	Not Actively Competing
15.46.22		Podium Confirmed
15.47.57		End Of Session

Start                      End                      The results are provisional until the end of the time limit for protests and appeals  
 02/10/2021              15:15                      15:47                      and the completion of the technical checks.

These data/results cannot be reproduced, stored and/or transmitted in whole or in part by any manner of electronic, mechanical, photocopying, recording, broadcasting or otherwise now known or herein after developed without the previous express consent by the copyright owner, except for reproduction in daily press and regular printed publications on sale to the public within 60 days of the event related to those data/results and always provided that copyright symbol appears together as follows below.

© DORNA WSBK ORGANIZATION Srl 2021

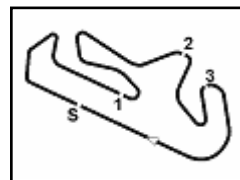
FIKR PERUGIA TIMING



Official Tyre Supplier



Official Timekeeper



Portimao 4.592 m

## Motul Portuguese Round, 1-3 October 2021 Championship Standings

1 / 3

Points	Points From First	Points From Previous	May		May		June		July		August		August		September		September		October		October		November	
			ARAGON	ESTORIL	MISANO	ASSEN	MOST	NAVARRA	MAGNY-COURS	BARCELONA	JEREZ	PORTIMAO	VILLICUM	MANDALIKA										
<b>1 AEGERTER</b> Dominique (SUI)	<b>343</b>		20 2	11 2	13 2	25 2	25 1	25 1	25 1	25 1	13 1	25 1	25 1	25 1	20 1	1	1	25 1	16 1					
<b>2 OENDAAAL</b> Steven (RSA)	<b>275</b>	68	25 1	25 1	25 1	16 2	11 2	20 2	3 2	25 2	20 2	20 2	10 2	10 2	8 2	9 2	8 2	10 2						
<b>3 GONZALEZ</b> Manuel (ESP)	<b>236</b>	107	39	11 5	5 6	11 7	13 6	11 5	13 6	10 6	10 6	20 5	16 4		13 6	25 5	20 4	25 3	13 3	20 4				
<b>4 OETTL</b> Philipp (GER)	<b>224</b>	119	12	16 3	6 4	20 4	16 3	10 3	10 3	16 3	20 3	16 3	13 3	9 3	10 3	9 3	13 4	11 3	8 4	20 4	7 3			
<b>5 CLUZEL</b> Jules (FRA)	<b>171</b>	172	53	16 6	16 5	4 8	13 6	16 5	13 5	13 5	9 6	9 6	13 6	11 5	16 5		6 6	25 6	5					
<b>6 BERNARDI</b> Luca (SMR)	<b>161</b>	182	10	13 4	9 9	20 4	20 3	20 3	4 4	11 4	10 4	11 5	16 4	16 4	11 4									
<b>7 DE ROSA</b> Raffaele (ITA)	<b>135</b>	208	26	7 9	20 3	10 3	10 7	9 8	9 8	9 9	4 9	6 10	7 10	7 10	7 10	16 10	20 8	9 8	13 7					
<b>8 KRUMMENACHER</b> Randy (SUI)	<b>131</b>	212	4	5 11	7 10	7 10	7 10	9 9	9 8	11 8	16 7	5 7	5 7	10 8	10 7	5 8	2 9	25 7	13 7	9 7	8			
<b>9 CARICASULO</b> Federico (ITA)	<b>126</b>	217	5	10 6	4 11	10 11	7 11	7 12	8 10	11 9	10 8	11 8	13 7	10 7	9 7		10 8	11 7	2 9					
<b>10 ONCU</b> Can Alexander (TUR)	<b>121</b>	222	5	6 10	2 13	9 13	8 11	8 13	9 11	9 11	8 11	7 10	8 9	8 9	8 9	16 8	13 10	10 10	8 10					
<b>11 TUULI</b> Niki (FIN)	<b>112</b>	231	9		5 18	8 14	7 13	7 14	8 14	8 14	7 13	8 12	6 11	9 11	11 11	11 11	16 11	16 11	11 11					
<b>12 SOOMER</b> Hannes (EST)	<b>69</b>	274	43	9 7	13 4	8 6	11 5	6 7	6 7	7 8	11 11	11 11	12 12	12 12	12 12	12 12	12 12	12 12	12 12	12 12				
<b>13 BERGMAN</b> Christoffer (SWE)	<b>47</b>	296	22	8 8	10 5	6 8	5 9	5 10	5 11	5 13	14 14	14 14	14 14	14 14	14 13	3 13	4 13	13 13	13 13	13 13				
<b>14 ALCOBA</b> Marc (ESP)	<b>40</b>	303	7	9 12	3 12	6 12	6 12	8 14	7 12	7 11	7 12	7 13	13 13	13 13	13 14	14 14	14 14	14 14	14 14	14 14				
<b>15 SEBESTYEN</b> Peter (HUN)	<b>37</b>	306	3					5 21	4 18	6 18	6 18	18 18	18 18	18 18	18 16	6 16	7 16	1 16	3 15	5 15				
<b>16 MANFREDI</b> Kevin (ITA)	<b>31</b>	312	6	3 13	4 15	2 15	4 16	4 15	1 15	5 15	3 15	3 15	15 15	15 15	4 15	5 15	15 15	15 15	15 16	16 16				
<b>17 BRENNER</b> Marcel (SUI)	<b>26</b>	317	5								4 26	6 27	6 20	20 20	20 21	21 20	21 20	20 17	5 17					
<b>18 HENDRA PRATAMA</b> Galang (INA)	<b>24</b>	319	2	1 15	6 15		3 17	2 17	2 15	2 17	2 17	2 17	5 16	5 16	3 16	3 16	17 17	17 18	17 18	18 18				
<b>19 TAKALA</b> Vertti (FIN)	<b>23</b>	320	1	8 13	3 13	2 15	2 15	6 15	6 17	6 15	16 16	16 16	16 16	16 16	16 16	2 18	2 18	18 19	18 19	19 19				
<b>20 JESPERSEN</b> Simon (DEN)	<b>22</b>	321	1									7 21	8 18	8 19	18 19	5 19	2 19	19 20	20 20					
<b>21 VERDOIA</b> Andy (FRA)	<b>14</b>	329	8											6 25	8 20	20 21	21 21	21 21	21 21					
<b>22 VAN STRAALLEN</b> Glenn (NED)	<b>13</b>	330	1													6 28	7 22	22 22	22 22	22 22				
<b>23 ARBEL</b> Loic (FRA)	<b>10</b>	333	3													10 21	23 23	23 23	23 23	23 23				
<b>24 HOBELSBERGER</b> Patrick (GER)	<b>10</b>	333	0														6 30	30 30	32 32	4 23				
<b>25 FROSSARD</b> Stephane (SUI)	<b>10</b>	333	0	2 19	1 19		21 22	25 25	25 25	25 28	30 30	32 32		3 25	4 21	21 23	23 23	23 23	23 23					

02/10/2021 First Line: Championship Standings - Second Line: Ranking Progression

These data/results cannot be reproduced, stored and/or transmitted in whole or in part by any manner of electronic, mechanical, photocopying, recording, broadcasting or otherwise now known or herein after developed without the previous express consent by the copyright owner, except for reproduction in daily press and regular printed publications on sale to the public within 60 days of the event related to those data/results and always provided that copyright symbol appears together as follows below.

© DORNA WSBK ORGANIZATION Srl 2021

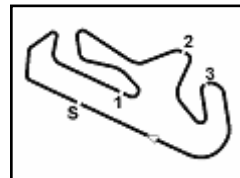
FICR PERUGIA TIMING



Official Tyre Supplier



Official Timekeeper



Portimao 4.592 m

## Motul Portuguese Round, 1-3 October 2021 Championship Standings

2 / 3

Points	Points From First	Points From Previous	May	May	June	July	August	August	September	September	September	October	October	November										
			ARAGON	ESTORIL	MISANO	ASSEN	MOST	NAVARRA	MAGNY-COURS	BARCELONA	JEREZ	PORTIMAO	VILLICUM	MANDALIKA										
26	DEBISE	9	334	1				9																
	Valentin (FRA)							19	19	21	21	23	24	25	25	26								
27	MORAIS	9	334	0			6	2	1															
	Sheridan (POR)						19	19	19	19	21	21	23	24	25	26								
28	SANCHIS	8	335	1					3	5														
	MARTINEZ								30	23	23	25	26	27	27	28								
29	MANZI	7	336	1									7											
	Stefano (ITA)												28	29										
30	PATACCA	7	336	0			3						4											
	Matteo (ITA)						22	25	25	25	28	30	32	34	34	36	28	28	29					
31	HERRERA	7	336	0	4	3																		
	Maria (ESP)				12	15	15	17	18	18	18	20	20	21	21	24	24	26	27	28	28	29		
32	FULIGNI	7	336	0					1		3	1		2										
	Federico (ITA)								27	32	35	29	31	29	31	33	33	28	29					
33	MONTELLA	6	337	1										6										
	Yari (ITA)													33										
34	FULIGNI	6	337	0			6																	
	Filippo (ITA)						19	19	19	21	21	22	23	25	25	27	28	30	30	32	33			
35	FABRIZIO	6	337	0	2				3	1														
	Michel (ITA)				14	18	19	20	22	24	21	21	21	22	23	25	25	27	28	30	30	32	33	
36	ENDERLEIN	5	338	1							5													
	Max (GER)										24	25	27	29	29	31	33	33	35	36				
37	MERCANELLI	5	338	0			5																	
	Roberto (ITA)						20	20	21	23	23	24	25	27	29	29	31	33	33	35	36			
38	OKUBO	4	339	1							4													
	Hikari (JPN)										27	29	31	32	34	36	36	37	38					
39	ROCCOLI	4	339	0			4																	
	Massimo (ITA)						21	24	24	24	26	27	29	31	32	34	36	36	37	38				
40	TACCINI	4	339	0			1																	
	Leonardo (ITA)						23	25	27	27	27	32	35	37	39	39	41	36	36	37	38			
41	GRUNWALD	3	340	1							3													
	Luca (GER)										28	30	32	34	34	36	39	39	40	41				
42	VOSTATEK	3	340	0							2													
	Ondrej (CZE)										31	34	35	36	36	38	40	40	41	41				
43	ORRADRE	2	341	1									2											
	Unai (ESP)												36	36	38	40	40	41	43					
44	VALLE	2	341	0							2													
	Daniel (ESP)										35	36	36	38	40	40	41	43						
45	CAUCHI	1	342	1									1											
	Ludovic (FRA)												41	43	43	44	45							
46	GUTIERREZ	1	342	0							1													
	OLESIAS										37	39	39	41	43	43	44	45						
47	OTTAVIANI	1	342	0			1																	
	Luca (ITA)						25	27	27	27	32	35	37	39	39	41	43	43	44	45				
48	PIZZOLI	1	342	0			1																	
	Davide (ITA)						21	21	23	25	27	27	27	32	35	37	39	39	41	43	43	44	45	
49	SZKOPEK	1	342	0			1																	
	Pawel (POL)						19	21	21	23	25	27	27	27	32	35	37	39	39	41	43	43	44	45

02/10/2021 First Line: Championship Standings - Second Line: Ranking Progression

These data/results cannot be reproduced, stored and/or transmitted in whole or in part by any manner of electronic, mechanical, photocopying, recording, broadcasting or otherwise now known or herein after developed without the previous express consent by the copyright owner, except for reproduction in daily press and regular printed publications on sale to the public within 60 days of the event related to those data/results and always provided that copyright symbol appears together as follows below.

© DORNA WSBK ORGANIZATION Srl 2021

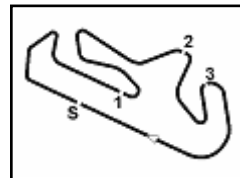
FICR PERUGIA TIMING



Official Tyre Supplier



Official Timekeeper



Portimao 4.592 m

## Motul Portuguese Round, 1-3 October 2021 Championship Standings

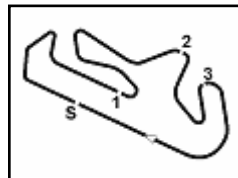
Points	Points From First	Points From Previous	May	May	June	July	August	August	September	September	September	October						
			ARAGON	ESTORIL	MISANO	ASSEN	MOST	NAVARRA	MAGNY-COURS	BARCELONA	JEREZ	PORTIMAO						
<b>WorldSSP Challenge</b>																		
<b>1</b>	<b>CARICASULO</b>	<b>31</b>						<b>11</b>	<b>10</b>									<b>10</b>
	Federico (ITA)							2	2	2	2	2	2	2	2	2	2	1
<b>2</b>	<b>MANFREDI</b>	<b>31</b>	<b>0</b>	<b>3</b>	<b>4</b>	<b>2</b>	<b>4</b>	<b>1</b>	<b>5</b>	<b>3</b>		<b>4</b>	<b>5</b>					
	Kevin (ITA)			2	1	1	1	1	1	1	1	1	1	1	1	1	1	1
<b>3</b>	<b>FROSSARD</b>	<b>10</b>	<b>21</b>	<b>21</b>								<b>3</b>	<b>4</b>					
	Stephane (SUI)				3	3	3	3	3	4	4	5	5	4	3	3	3	3
<b>4</b>	<b>HERRERA</b>	<b>7</b>	<b>24</b>	<b>3</b>	<b>4</b>	<b>3</b>												
	Maria (ESP)				1	1	1	2	2	2	2	2	2	3	3	3	3	4
<b>5</b>	<b>OKUBO</b>	<b>4</b>	<b>27</b>	<b>3</b>								<b>4</b>						
	Hikari (JPN)											4	4	5	5	5	5	5
<b>6</b>	<b>TACCINI</b>	<b>4</b>	<b>27</b>	<b>0</b>			<b>1</b>											<b>3</b>
	Leonardo (ITA)						4	4	4	4	5	5	6	6	6	6	6	5

02/10/2021 First Line: Championship Standings - Second Line: Ranking Progression

These data/results cannot be reproduced, stored and/or transmitted in whole or in part by any manner of electronic, mechanical, photocopying, recording, broadcasting or otherwise now known or herein after developed without the previous express consent by the copyright owner, except for reproduction in daily press and regular printed publications on sale to the public within 60 days of the event related to those data/results and always provided that copyright symbol appears together as follows below.

© DORNA WSBK ORGANIZATION Srl 2021





Portimao 4.592 m

1 / 4

## Motul Portuguese Round, 1-3 October 2021

### Lap Chart Race 1

Lap	Lap																
	1	2	3	4	5	6	7	8	9	10	11	12	13	14	15	16	17
1	77	61	16	81	81	16	16	16	16	77	16	16	81	16	81	16	16
2	61	16	81	16	16	77	77	77	77	81	81	81	16	81	16	81	81
3	66	81	61	77	77	3	3	3	81	16	3	3	3	66	66	77	77
4	16	77	77	61	61	66	81	81	3	3	77	77	66	3	3	66	3
5	81	66	66	3	3	81	66	66	66	66	66	66	77	77	77	3	66
6	3	3	3	66	66	61	4	4	4	4	4	4	4	4	4	4	4
7	4	4	4	4	4	4	61	61	61	61	61	21	21	21	21	21	21
8	94	94	94	94	5	94	94	21	21	21	21	61	61	61	61	61	61
9	5	5	5	5	94	5	21	5	5	91	91	91	91	91	91	5	5
10	91	21	21	21	21	5	94	91	5	5	5	5	5	5	5	91	91
11	21	91	91	91	91	91	91	91	94	94	94	94	94	94	52	52	56
12	38	25	25	38	38	28	28	28	52	52	52	52	52	52	56	56	52
13	28	28	38	56	28	38	52	52	28	38	38	56	56	52	38	38	38
14	25	38	28	28	52	52	38	38	38	28	56	38	38	38	94	94	94
15	52	56	56	52	56	56	56	56	56	56	28	28	28	28	50	24	50
16	56	52	52	25	25	25	25	25	24	50	50	50	50	50	24	50	24
17	22	22	34	34	24	50	24	24	25	24	24	24	24	24	22	22	22
18	34	34	24	24	50	24	50	50	50	22	22	22	22	22	25	6	6
19	24	24	50	50	22	22	22	22	22	95	95	95	6	25	92	92	25
20	40	40	96	96	6	6	6	95	95	92	6	6	25	6	6	25	92
21	50	50	22	22	92	92	92	92	6	92	25	92	92	95	95	95	95
22	92	96	92	92	95	95	95	6	6	25	25	92	95	95	55	55	55
23	96	92	6	6	55	55	55	55	55	55	55	55	55	55	42	42	42
24	95	95	95	95	2	2	2	2	2	42	42	42	42	42	2	2	2
25	2	6	55	55	42	42	42	42	42	2	2	2	2	2	82	82	82
26	55	55	42	42	82	82	82	82	82	82	82	82	82	82	40		
27	6	2	2	2	96	40	40	40	40	40	40	40	40	40			
28	82	42	82	82	40												
29	42	82	40	40													
30	69	69															

Final Result		
1	16 J. CLUZEL	Laps 17
2	81 M. GONZALEZ	0.389
3	77 D. AEGERTER	0.565
4	3 R. DE ROSA	0.669
5	66 N. TUULI	1.099
6	4 S. ODENDAAL	1.486
7	21 R. KRUMMENACHER	5.519
8	61 C. ONCU	9.051
9	5 P. OETTL	9.272
10	91 Y. MONTELLA	9.464
11	56 P. SEBESTYEN	18.124
12	52 P. HOBELSBERGER	18.372
13	38 H. SOOMER	18.698
14	94 F. CARICASULO	22.048
15	50 O. VOSTATEK	32.635
16	24 L. TACCINI	32.649
17	22 F. FULIGNI	33.216
18	6 M. HERRERA	38.180
19	25 M. BRENNER	38.225
20	92 B. VAN EERDE	38.614
21	95 V. TAKALA	38.784
22	55 G. HENDRA PRATAM	39.682
23	42 S. FROSSARD	53.667
24	2 L. MONTELLA	1'00.976
25	82 P. ROMERO BARBOS	1'11.124
26	40 U. ORRADRE	2 Laps
RET	28 G. VAN STRAALEN	3 Laps
RET	96 D. SANCHIS MARTIN	12 Laps
RET	34 K. MANFREDI	13 Laps
RET	69 E. MONTERO HUERT	15 Laps

02/10/2021

These data/results cannot be reproduced, stored and/or transmitted in whole or in part by any manner of electronic, mechanical, photocopying, recording, broadcasting or otherwise now known or herein after developed without the previous express consent by the copyright owner, except for reproduction in daily press and regular printed publications on sale to the public within 60 days of the event related to those data/results and always provided that copyright symbol appears together as follows below.

© DORNA WSBK ORGANIZATION Srl 2021

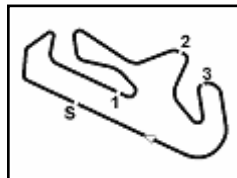
FCR PERUGIA TIMING



Official Tyre Supplier



Official Timekeeper



Portimao 4.592 m

## Motul Portuguese Round, 1-3 October 2021

### Lap Chart Race 1

2 / 4

#### Lap 1

1	77 D.Aegerter	1'47.307
2	61 C.Oncu	0.024
3	66 N.Tuuli	0.185
4	16 J.Cluzel	0.210
5	81 M.Gonzalez	0.395
6	3 R.De Rosa	0.435
7	4 S.Odendaal	1.383
8	94 F.Caricasulo	1.483
9	5 P.Oettl	1.507
10	91 Y.Montella	1.921
11	21 R.Krummenacher	1.935
12	38 H.Soomer	2.734
13	28 G.van Straalen	2.777
14	25 M.Brenner	2.807
15	52 P.Hobelsberger	3.357
16	56 P.Sebestyen	3.606
17	22 F.Fuligni	4.112
18	34 K.Manfredi	4.528
19	24 L.Taccini	4.648
20	40 U.Orradre	4.873
21	50 O.Vostatek	5.064
22	92 B.Van Eerde	5.439
23	96 D.Sanchis Martinez	5.590
24	95 V.Takala	5.702
25	2 L.Montella	6.501
26	55 G.Hendra Pratama	6.566
27	6 M.Herrera	6.614
28	82 P.Romero Barbosa	7.216
29	42 S.Frossard	7.328
30	69 E.Montero Huerta	7.709

20	21 R.Krummenacher	2.327
11	91 Y.Montella	2.671
12	25 M.Brenner	4.378
13	38 H.Soomer	5.124
14	28 G.van Straalen	5.423
15	56 P.Sebestyen	5.442
16	52 P.Hobelsberger	5.605
17	34 K.Manfredi	7.023
18	24 L.Taccini	7.287
19	50 O.Vostatek	7.312
20	96 D.Sanchis Martinez	7.937
21	22 F.Fuligni	8.212
22	92 B.Van Eerde	8.708
23	6 M.Herrera	9.947
24	95 V.Takala	9.956
25	55 G.Hendra Pratama	10.942
26	42 S.Frossard	12.957
27	2 L.Montella	13.011
28	82 P.Romero Barbosa	13.551
29	40 U.Orradre	36.885

#### Lap 4

1	81 M.Gonzalez	7'03.355
2	16 J.Cluzel	0.109
3	77 D.Aegerter	0.742
4	61 C.Oncu	0.951
5	3 R.De Rosa	1.078
6	66 N.Tuuli	1.356
7	4 S.Odendaal	1.781
8	94 F.Caricasulo	2.430
9	5 P.Oettl	2.479
10	21 R.Krummenacher	2.835
11	91 Y.Montella	3.160
12	38 H.Soomer	6.098
13	56 P.Sebestyen	6.516
14	28 G.van Straalen	6.666
15	52 P.Hobelsberger	6.710
16	25 M.Brenner	7.498
17	34 K.Manfredi	8.325
18	24 L.Taccini	9.197
19	50 O.Vostatek	9.285
20	96 D.Sanchis Martinez	9.559
21	22 F.Fuligni	9.827
22	92 B.Van Eerde	11.578
23	6 M.Herrera	11.716
24	95 V.Takala	12.329
25	55 G.Hendra Pratama	13.137
26	42 S.Frossard	15.400
27	2 L.Montella	15.945
28	82 P.Romero Barbosa	17.304
29	40 U.Orradre	

#### Lap 5

1	81 M.Gonzalez	8'48.303
2	16 J.Cluzel	0.372
3	77 D.Aegerter	0.729
4	61 C.Oncu	1.335
5	3 R.De Rosa	1.355
6	66 N.Tuuli	1.579
7	4 S.Odendaal	2.177
8	5 P.Oettl	3.344
9	94 F.Caricasulo	3.546
10	21 R.Krummenacher	3.684
11	91 Y.Montella	4.036
12	38 H.Soomer	7.616
13	28 G.van Straalen	7.794
14	52 P.Hobelsberger	7.904
15	56 P.Sebestyen	8.147
16	25 M.Brenner	8.929
17	24 L.Taccini	11.134
18	50 O.Vostatek	12.401
19	22 F.Fuligni	13.658
20	6 M.Herrera	14.646
21	92 B.Van Eerde	14.660
22	95 V.Takala	15.099

23	55 G.Hendra Pratama	16.127
24	2 L.Montella	19.260
25	42 S.Frossard	21.205
26	82 P.Romero Barbosa	22.517
27	96 D.Sanchis Martinez	143.150
28	40 U.Orradre	

#### Lap 6

1	16 J.Cluzel	10'34.312
2	77 D.Aegerter	0.346
3	3 R.De Rosa	0.618
4	66 N.Tuuli	0.955
5	81 M.Gonzalez	1.187
6	61 C.Oncu	1.571
7	4 S.Odendaal	1.689
8	94 F.Caricasulo	3.206
9	5 P.Oettl	3.450
10	21 R.Krummenacher	3.535
11	91 Y.Montella	3.724
12	28 G.van Straalen	7.510
13	38 H.Soomer	8.429
14	52 P.Hobelsberger	8.577
15	56 P.Sebestyen	8.738
16	25 M.Brenner	12.538
17	50 O.Vostatek	13.549
18	24 L.Taccini	13.689
19	22 F.Fuligni	15.095
20	6 M.Herrera	16.038
21	92 B.Van Eerde	16.228
22	95 V.Takala	16.381
23	55 G.Hendra Pratama	17.363
24	2 L.Montella	22.088
25	42 S.Frossard	23.547
26	82 P.Romero Barbosa	26.046
27	40 U.Orradre	

#### Lap 7

1	16 J.Cluzel	12'19.618
2	77 D.Aegerter	0.176
3	3 R.De Rosa	0.349
4	81 M.Gonzalez	0.758
5	66 N.Tuuli	1.131
6	4 S.Odendaal	1.548
7	61 C.Oncu	2.153
8	94 F.Caricasulo	3.669
9	21 R.Krummenacher	3.685
10	5 P.Oettl	3.797
11	91 Y.Montella	4.237
12	28 G.van Straalen	8.489
13	52 P.Hobelsberger	8.878
14	38 H.Soomer	9.174
15	56 P.Sebestyen	9.611
16	25 M.Brenner	14.240
17	24 L.Taccini	15.463
18	50 O.Vostatek	15.482
19	22 F.Fuligni	17.086
20	6 M.Herrera	17.630
21	92 B.Van Eerde	18.031
22	95 V.Takala	18.176
23	55 G.Hendra Pratama	19.022
24	2 L.Montella	25.320
25	42 S.Frossard	26.693
26	82 P.Romero Barbosa	29.769
27	40 U.Orradre	

#### Lap 8

1	16 J.Cluzel	14'04.898
2	77 D.Aegerter	0.298
3	3 R.De Rosa	0.342
4	81 M.Gonzalez	0.708
5	66 N.Tuuli	0.745
6	4 S.Odendaal	1.771
7	61 C.Oncu	2.583
8	21 R.Krummenacher	3.920
9	5 P.Oettl	4.241

#### Lap 9

1	16 J.Cluzel	15'50.568
2	77 D.Aegerter	0.066
3	81 M.Gonzalez	0.091
4	3 R.De Rosa	0.167
5	66 N.Tuuli	0.374
6	4 S.Odendaal	1.896
7	61 C.Oncu	2.676
8	21 R.Krummenacher	3.923
9	5 P.Oettl	4.400
10	91 Y.Montella	4.683
11	94 F.Caricasulo	4.972
12	52 P.Hobelsberger	10.302
13	28 G.van Straalen	10.586
14	38 H.Soomer	10.588
15	56 P.Sebestyen	11.098
16	24 L.Taccini	18.997
17	25 M.Brenner	19.102
18	50 O.Vostatek	19.155
19	22 F.Fuligni	19.890
20	95 V.Takala	21.252
21	92 B.Van Eerde	21.578
22	6 M.Herrera	21.872
23	55 G.Hendra Pratama	22.525
24	2 L.Montella	31.105
25	42 S.Frossard	31.168
26	82 P.Romero Barbosa	37.357
27	40 U.Orradre	

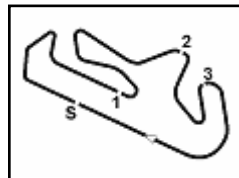
#### Lap 10

1	77 D.Aegerter	17'36.368
2	81 M.Gonzalez	0.030
3	16 J.Cluzel	0.086
4	3 R.De Rosa	0.172
5	66 N.Tuuli	0.233
6	4 S.Odendaal	1.723
7	61 C.Oncu	2.540
8	21 R.Krummenacher	3.492
9	91 Y.Montella	4.705
10	5 P.Oettl	4.714
11	94 F.Caricasulo	5.155
12	52 P.Hobelsberger	10.835
13	38 H.Soomer	11.105
14	28 G.van Straalen	11.524
15	56 P.Sebestyen	11.629
16	50 O.Vostatek	19.869
17	24 L.Taccini	20.619
18	22 F.Fuligni	21.107
19	95 V.Takala	22.310
20	92 B.Van Eerde	22.708
21	6 M.Herrera	22.909
22	25 M.Brenner	23.358
23	55 G.Hendra Pratama	23.933
24	42 S.Frossard	32.700
25	2 L.Montella	36.061
26	82 P.Romero Barbosa	40.597

02/10/2021

These data/results cannot be reproduced, stored and/or transmitted in whole or in part by any manner of electronic, mechanical, photocopying, recording, broadcasting or otherwise now known or herein after developed without the previous express consent by the copyright owner, except for reproduction in daily press and regular printed publications on sale to the public within 60 days of the event related to those data/results and always provided that copyright symbol appears together as follows below.

© DORNA WSBK ORGANIZATION Srl 2021



## Motul Portuguese Round, 1-3 October 2021

### Lap Chart Race 1

27 40 U.Orradre

Lap 11		
1	16 J.Cluzel	19'21.812
2	81 M.Gonzalez	0.181
3	3 R.De Rosa	0.226
4	77 D.Aegerter	0.522
5	66 N.Tuuli	0.576
6	4 S.Odendaal	1.564
7	61 C.Oncu	3.007
8	21 R.Krummenacher	3.200
9	91 Y.Montella	5.041
10	5 P.Oettl	5.376
11	94 F.Caricasulo	5.594
12	52 P.Hobelsberger	11.647
13	38 H.Soomer	11.779
14	56 P.Sebestyen	11.890
15	28 G.van Straalen	12.235
16	50 O.Vostatek	21.243
17	24 L.Taccini	22.124
18	22 F.Fuligni	22.863
19	95 V.Takala	23.573
20	6 M.Herrera	24.842
21	92 B.Van Eerde	24.850
22	25 M.Brenner	24.990
23	55 G.Hendra Pratama	25.752
24	42 S.Frossard	35.091
25	2 L.Montella	39.690
26	82 P.Romero Barbosa	44.282
27	40 U.Orradre	

Lap 12		
1	16 J.Cluzel	21'06.993
2	81 M.Gonzalez	0.136
3	3 R.De Rosa	0.264
4	77 D.Aegerter	0.694
5	66 N.Tuuli	0.795
6	4 S.Odendaal	1.598
7	21 R.Krummenacher	3.495
8	61 C.Oncu	4.284
9	91 Y.Montella	5.709
10	5 P.Oettl	6.111
11	94 F.Caricasulo	6.352
12	52 P.Hobelsberger	12.581
13	56 P.Sebestyen	13.140
14	38 H.Soomer	13.528
15	28 G.van Straalen	13.823
16	50 O.Vostatek	22.934
17	24 L.Taccini	23.730
18	22 F.Fuligni	24.439
19	95 V.Takala	25.238
20	6 M.Herrera	26.924
21	25 M.Brenner	27.280
22	92 B.Van Eerde	27.578
23	55 G.Hendra Pratama	28.413
24	42 S.Frossard	37.907
25	2 L.Montella	43.197
26	82 P.Romero Barbosa	48.134
27	40 U.Orradre	

Lap 13		
1	81 M.Gonzalez	22'51.943
2	16 J.Cluzel	0.047
3	3 R.De Rosa	0.601
4	66 N.Tuuli	0.724
5	77 D.Aegerter	1.053
6	4 S.Odendaal	1.590
7	21 R.Krummenacher	4.042
8	61 C.Oncu	5.403
9	91 Y.Montella	6.698
10	5 P.Oettl	7.217
11	94 F.Caricasulo	7.584
12	52 P.Hobelsberger	13.466
13	56 P.Sebestyen	14.061
14	38 H.Soomer	14.822

15	28 G.van Straalen	15.360
16	50 O.Vostatek	24.779
17	24 L.Taccini	25.370
18	22 F.Fuligni	26.503
19	6 M.Herrera	29.160
20	25 M.Brenner	29.652
21	92 B.Van Eerde	29.813
22	95 V.Takala	30.400
23	55 G.Hendra Pratama	30.723
24	42 S.Frossard	40.254
25	2 L.Montella	46.331
26	82 P.Romero Barbosa	52.679
27	40 U.Orradre	

Lap 14		
1	16 J.Cluzel	24'37.288
2	81 M.Gonzalez	0.155
3	66 N.Tuuli	0.201
4	3 R.De Rosa	0.607
5	77 D.Aegerter	0.968
6	4 S.Odendaal	1.344
7	21 R.Krummenacher	4.294
8	61 C.Oncu	5.992
9	91 Y.Montella	7.357
10	5 P.Oettl	7.658
11	94 F.Caricasulo	11.300
12	56 P.Sebestyen	14.538
13	52 P.Hobelsberger	14.732
14	38 H.Soomer	15.735
15	28 G.van Straalen	16.205
16	50 O.Vostatek	26.317
17	24 L.Taccini	26.789
18	22 F.Fuligni	27.869
19	25 M.Brenner	31.404
20	6 M.Herrera	31.453
21	92 B.Van Eerde	31.462
22	95 V.Takala	32.145
23	55 G.Hendra Pratama	32.680
24	42 S.Frossard	42.483
25	2 L.Montella	49.375
26	82 P.Romero Barbosa	56.945
27	40 U.Orradre	

Lap 15		
1	81 M.Gonzalez	26'22.696
2	16 J.Cluzel	0.052
3	66 N.Tuuli	0.147
4	3 R.De Rosa	0.414
5	77 D.Aegerter	0.541
6	4 S.Odendaal	0.976
7	21 R.Krummenacher	4.352
8	61 C.Oncu	6.875
9	91 Y.Montella	7.895
10	5 P.Oettl	8.049
11	52 P.Hobelsberger	15.892
12	56 P.Sebestyen	15.936
13	38 H.Soomer	16.389
14	94 F.Caricasulo	18.650
15	50 O.Vostatek	27.623
16	24 L.Taccini	27.842
17	22 F.Fuligni	29.027
18	25 M.Brenner	33.441
19	92 B.Van Eerde	33.515
20	6 M.Herrera	33.533
21	95 V.Takala	33.866
22	55 G.Hendra Pratama	34.833
23	42 S.Frossard	44.877
24	2 L.Montella	52.856
25	82 P.Romero Barbosa	1'01.283
26	40 U.Orradre	

Lap 16		
1	16 J.Cluzel	28'07.978
2	81 M.Gonzalez	0.024
3	77 D.Aegerter	0.255

4	66 N.Tuuli	0.479
5	3 R.De Rosa	0.511
6	4 S.Odendaal	1.043
7	21 R.Krummenacher	4.631
8	61 C.Oncu	7.894
9	5 P.Oettl	8.383
10	91 Y.Montella	8.659
11	52 P.Hobelsberger	16.603
12	56 P.Sebestyen	16.625
13	38 H.Soomer	17.085
14	94 F.Caricasulo	20.060
15	24 L.Taccini	29.814
16	50 O.Vostatek	29.884
17	22 F.Fuligni	30.161
18	6 M.Herrera	35.755
19	92 B.Van Eerde	35.773
20	25 M.Brenner	36.046
21	95 V.Takala	36.514
22	55 G.Hendra Pratama	37.034
23	42 S.Frossard	48.375
24	2 L.Montella	56.318
25	82 P.Romero Barbosa	1'05.671

Lap 17		
1	16 J.Cluzel	29'52.761
2	81 M.Gonzalez	0.389
3	77 D.Aegerter	0.565
4	3 R.De Rosa	0.669
5	66 N.Tuuli	1.099
6	4 S.Odendaal	1.486
7	21 R.Krummenacher	5.519
8	61 C.Oncu	9.051
9	5 P.Oettl	9.272
10	91 Y.Montella	9.464
11	56 P.Sebestyen	18.124
12	52 P.Hobelsberger	18.372
13	38 H.Soomer	18.698
14	94 F.Caricasulo	22.048
15	50 O.Vostatek	32.635
16	24 L.Taccini	32.649
17	22 F.Fuligni	33.216
18	6 M.Herrera	38.180
19	25 M.Brenner	38.225
20	92 B.Van Eerde	38.614
21	95 V.Takala	38.784
22	55 G.Hendra Pratama	39.682
23	42 S.Frossard	53.667
24	2 L.Montella	1'00.976
25	82 P.Romero Barbosa	1'11.124

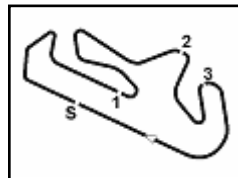
02/10/2021

These data/results cannot be reproduced, stored and/or transmitted in whole or in part by any manner of electronic, mechanical, photocopying, recording, broadcasting or otherwise now known or herein after developed without the previous express consent by the copyright owner, except for reproduction in daily press and regular printed publications on sale to the public within 60 days of the event related to those data/results and always provided that copyright symbol appears together as follows below.

© DORNA WSBK ORGANIZATION Srl 2021







Portimao 4.592 m

4 / 4

## Motul Portuguese Round, 1-3 October 2021

### Lap Chart Race 1

#### Race Pace Comparison

	16 Clu	81 Gon	77 Aeg	3 DeR	66 Tuu	4 Ode	21 Kru	61 Onc	5 Oet	91 MoY	56 Seb	52 Hob	38 Soo	94 Car
1	1'47.517	1'47.702	1'47.307	1'47.742	1'47.492	1'48.690	1'49.242	1'47.331	1'48.814	1'49.228	1'50.913	1'50.664	1'50.041	1'48.790
2	1'45.657	1'45.585	1'46.187	1'46.066	1'46.124	1'45.180	1'45.568	1'45.826	1'45.819	1'46.136	1'46.740	1'47.034	1'47.098	<b>1'45.511</b>
3	1'45.095	1'44.996	1'45.556	1'45.429	1'45.578	1'45.941	1'45.786	1'45.790	<b>1'45.541</b>	1'45.576	1'46.058	1'46.176	1'46.254	1'45.727
4	1'45.195	1'45.072	1'45.047	1'45.196	1'45.517	1'45.325	1'45.594	1'45.359	1'45.660	<b>1'45.575</b>	1'46.160	1'46.191	1'46.060	1'45.757
5	1'45.211	1'44.948	<b>1'44.935</b>	1'45.225	1'45.171	1'45.344	1'45.797	<b>1'45.332</b>	1'45.813	1'45.824	1'46.579	1'46.142	1'46.466	1'46.064
6	1'45.637	1'47.196	1'45.626	1'45.272	1'45.385	1'45.521	1'45.860	1'46.245	1'46.115	1'45.697	1'46.600	1'46.682	1'46.822	1'45.669
7	1'45.306	1'44.877	1'45.136	1'45.037	1'45.482	1'45.165	1'45.456	1'45.888	1'45.653	1'45.819	1'46.179	<b>1'45.607</b>	1'46.051	1'45.769
8	1'45.280	1'45.230	1'45.402	1'45.273	1'44.894	1'45.503	1'45.515	1'45.710	1'45.724	1'45.710	1'46.018	1'46.302	1'46.190	1'46.213
9	1'45.670	1'45.053	1'45.438	1'45.495	1'45.299	1'45.795	1'45.673	1'45.763	1'45.829	1'45.686	1'46.419	1'46.072	1'46.174	1'46.040
10	1'45.886	1'45.739	1'45.734	1'45.805	1'45.659	1'45.627	1'45.369	1'45.664	1'46.114	1'45.822	1'46.331	1'46.333	1'46.317	1'45.983
11	1'45.358	1'45.595	1'45.966	1'45.498	1'45.787	1'45.285	<b>1'45.152</b>	1'45.911	1'46.106	1'45.780	<b>1'45.705</b>	1'46.256	1'46.118	1'45.883
12	1'45.181	1'45.136	1'45.353	1'45.219	1'45.400	1'45.215	1'45.476	1'46.458	1'45.916	1'45.849	1'46.431	1'46.115	1'46.930	1'45.939
13	1'44.997	<b>1'44.814</b>	1'45.309	1'45.287	1'44.879	<b>1'44.942</b>	1'45.497	1'46.069	1'46.056	1'45.939	1'45.871	1'45.835	1'46.244	1'46.182
14	1'45.298	1'45.500	1'45.260	1'45.351	<b>1'44.822</b>	1'45.099	1'45.597	1'45.934	1'45.786	1'46.004	1'45.822	1'46.611	1'46.258	1'49.061
15	1'45.460	1'45.253	1'44.981	1'45.215	1'45.354	1'45.040	1'45.466	1'46.291	1'45.799	1'45.946	1'46.806	1'46.568	1'46.062	1'52.758
16	1'45.230	1'45.306	1'44.996	1'45.379	1'45.614	1'45.349	1'45.561	1'46.301	1'45.616	1'46.046	1'45.971	1'45.993	<b>1'45.978</b>	1'46.692
17	<b>1'44.783</b>	1'45.148	1'45.093	<b>1'44.941</b>	1'45.403	1'45.226	1'45.671	1'45.940	1'45.672	1'45.588	1'46.282	1'46.552	1'46.396	1'46.771

	50 Vos	24 Tac	22 Ful	6 Her	25 Bre	92 VEe	95 Tak	55 Hen	42 Fro	2 MoL	82 Rom	40 Orr	28 vSt	96 San
1	1'52.371	1'51.955	1'51.419	1'53.921	1'50.114	1'52.746	1'53.009	1'53.873	1'54.635	1'53.808	1'54.523	1'52.180	1'50.084	1'52.897
2	1'46.943	1'46.606	1'46.724	1'47.101	1'46.361	<b>1'46.777</b>	1'47.725	1'47.842	1'48.561	1'49.104	1'48.730	1'47.067	1'46.888	<b>1'46.580</b>
3	<b>1'46.267</b>	1'46.995	1'48.338	1'47.194	<b>1'46.172</b>	1'47.454	1'47.491	1'47.496	1'48.030	1'48.368	<b>1'48.567</b>	2'15.907	1'46.720	1'46.729
4	1'47.059	1'46.996	1'46.701	1'46.855	1'48.206	1'47.956	1'47.459	1'47.281	1'47.529	<b>1'48.020</b>	1'48.839	5'27.144	1'46.329	1'46.708
5	1'48.064	1'46.885	1'48.779	1'47.878	1'46.379	1'48.030	1'47.718	1'47.938	1'50.753	1'48.263	1'50.161	1'48.335	1'46.076	3'18.539
6	1'47.157	1'48.564	1'47.446	1'47.401	1'49.618	1'47.577	1'47.291	1'47.245	1'48.351	1'48.837	1'49.538	1'47.512	<b>1'45.725</b>	
7	1'47.239	1'47.080	1'47.297	1'46.898	1'47.008	1'47.109	1'47.101	<b>1'46.965</b>	1'48.452	1'48.538	1'49.029	1'47.616	1'46.285	
8	1'47.187	1'47.165	1'46.832	1'48.321	1'47.887	1'47.394	1'46.879	1'47.366	1'47.961	1'48.343	1'48.985	1'47.515	1'46.562	
9	1'47.436	1'47.319	1'46.922	1'46.871	1'47.925	1'47.103	1'47.147	1'47.087	1'47.464	1'48.392	1'49.553	1'47.592	1'46.485	
10	1'46.514	1'47.422	1'47.017	<b>1'46.837</b>	1'50.056	1'46.930	1'46.858	1'47.208	1'47.332	1'50.756	1'49.040	1'47.545	1'46.738	
11	1'46.818	1'46.949	1'47.200	1'47.377	1'47.076	1'47.586	<b>1'46.707</b>	1'47.263	1'47.835	1'49.073	1'49.129	1'47.430	1'46.155	
12	1'46.872	1'46.787	1'46.757	1'47.263	1'47.471	1'47.909	1'46.846	1'47.842	1'47.997	1'48.688	1'49.033	1'47.460	1'46.769	
13	1'46.795	1'46.590	1'47.014	1'47.186	1'47.322	1'47.185	1'50.112	1'47.260	<b>1'47.297</b>	1'48.084	1'49.495	1'47.357	1'46.487	
14	1'46.883	1'46.764	1'46.711	1'47.638	1'47.097	1'46.994	1'47.090	1'47.302	1'47.574	1'48.389	1'49.611	1'47.187	1'46.190	
15	1'46.714	<b>1'46.461</b>	1'46.566	1'47.488	1'47.445	1'47.461	1'47.129	1'47.561	1'47.802	1'48.889	1'49.746	<b>1'47.044</b>		
16	1'47.543	1'47.254	<b>1'46.416</b>	1'47.504	1'47.887	1'47.540	1'47.930	1'47.483	1'48.780	1'48.744	1'49.670			
17	1'47.534	1'47.618	1'47.838	1'47.208	1'46.962	1'47.624	1'47.053	1'47.431	1'50.075	1'49.441	1'50.236			

	34 Man	69 MoH
1	1'51.835	1'55.016
2	1'46.490	<b>1'49.623</b>
3	1'46.967	
4	<b>1'46.388</b>	

02/10/2021

These data/results cannot be reproduced, stored and/or transmitted in whole or in part by any manner of electronic, mechanical, photocopying, recording, broadcasting or otherwise now known or herein after developed without the previous express consent by the copyright owner, except for reproduction in daily press and regular printed publications on sale to the public within 60 days of the event related to those data/results and always provided that copyright symbol appears together as follows below.

© DORNA WSBK ORGANIZATION Srl 2021

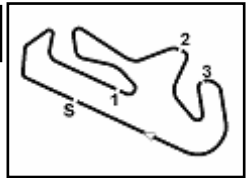
FICR PERUGIA TIMING



Official Tyre Supplier



Official Timekeeper



## Motul Portuguese Round, 1-3 October 2021

### Best Sectors & Speed Race 1

RESULTS			
1	16 J. CLUZEL	Yamaha YZF R6	Laps 17
2	81 M. GONZALEZ	Yamaha YZF R6	0.389
3	77 D. AEGERTER	Yamaha YZF R6	0.565
4	3 R. DE ROSA	Kawasaki ZX-6R	0.669
5	66 N. TUULI	MV Agusta F3 675	1.099
6	4 S. ODENDAAL	Yamaha YZF R6	1.486
7	21 R. KRUMMENACHER	Yamaha YZF R6	5.519
8	61 C. ONCU	Kawasaki ZX-6R	9.051
9	5 P. OETTL	Kawasaki ZX-6R	9.272
10	91 Y. MONTELLA	Yamaha YZF R6	9.464
11	56 P. SEBESTYEN	Yamaha YZF R6	18.124
12	52 P. HOBELSBERGER	Yamaha YZF R6	18.372
13	38 H. SOOMER	Yamaha YZF R6	18.698
14	94 F. CARICASULO	Yamaha YZF R6	22.048
15	50 O. VOSTATEK	Yamaha YZF R6	32.635
16	24 L. TACCINI	Kawasaki ZX-6R	32.649
17	22 F. FULIGNI	Yamaha YZF R6	33.216
18	6 M. HERRERA	Yamaha YZF R6	38.180
19	25 M. BRENNER	Yamaha YZF R6	38.225
20	92 B. VAN EERDE	Yamaha YZF R6	38.614
21	95 V. TAKALA	Yamaha YZF R6	38.784
22	55 G. HENDRA PRATAMA	Yamaha YZF R6	39.682
23	42 S. FROSSARD	Yamaha YZF R6	53.667
24	2 L. MONTELLA	Yamaha YZF R6	1'00.976
25	82 P. ROMERO BARBOSA	Kawasaki ZX-6R	1'11.124
26	40 U. ORRADRE	Yamaha YZF R6	2 Laps
RET	28 G. VAN STRAALEN	Yamaha YZF R6	3 Laps
RET	96 D. SANCHIS MARTINEZ	Yamaha YZF R6	12 Laps
RET	34 K. MANFREDI	Yamaha YZF R6	13 Laps
RET	69 E. MONTERO HUERTA	Yamaha YZF R6	15 Laps

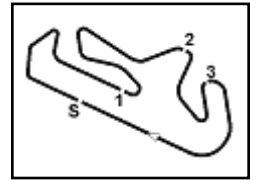
SPEED			
1	96 D. SANCHIS MARTINEZ	Yamaha YZF R6	277.8
2	5 P. OETTL	Kawasaki ZX-6R	276.4
3	94 F. CARICASULO	Yamaha YZF R6	275.7
4	81 M. GONZALEZ	Yamaha YZF R6	274.3
5	77 D. AEGERTER	Yamaha YZF R6	274.3
6	42 S. FROSSARD	Yamaha YZF R6	273.6
7	91 Y. MONTELLA	Yamaha YZF R6	273.6
8	52 P. HOBELSBERGER	Yamaha YZF R6	273.6
9	38 H. SOOMER	Yamaha YZF R6	272.9
10	4 S. ODENDAAL	Yamaha YZF R6	272.9
11	56 P. SEBESTYEN	Yamaha YZF R6	272.3
12	92 B. VAN EERDE	Yamaha YZF R6	272.3
13	3 R. DE ROSA	Kawasaki ZX-6R	272.3
14	50 O. VOSTATEK	Yamaha YZF R6	271.6
15	21 R. KRUMMENACHER	Yamaha YZF R6	270.9
16	40 U. ORRADRE	Yamaha YZF R6	270.2
17	6 M. HERRERA	Yamaha YZF R6	270.2
18	34 K. MANFREDI	Yamaha YZF R6	270.2
19	24 L. TACCINI	Kawasaki ZX-6R	270.2
20	66 N. TUULI	MV Agusta F3 675	270.2
21	28 G. VAN STRAALEN	Yamaha YZF R6	270.2
22	55 G. HENDRA PRATAMA	Yamaha YZF R6	270.2
23	25 M. BRENNER	Yamaha YZF R6	270.2
24	82 P. ROMERO BARBOSA	Kawasaki ZX-6R	269.6
25	22 F. FULIGNI	Yamaha YZF R6	269.6
26	61 C. ONCU	Kawasaki ZX-6R	269.6
27	16 J. CLUZEL	Yamaha YZF R6	268.2
28	95 V. TAKALA	Yamaha YZF R6	267.6
29	2 L. MONTELLA	Yamaha YZF R6	266.9
30	69 E. MONTERO HUERTA	Yamaha YZF R6	265.6

SEG. 1			SEG. 2			SEG. 3			SEG. 4		
1	52 P. HOBELSBERGER	33.430	1	81 M. GONZALEZ	29.877	1	16 J. CLUZEL	22.433	1	3 R. DE ROSA	18.396
2	81 M. GONZALEZ	33.442	2	4 S. ODENDAAL	29.905	2	81 M. GONZALEZ	22.437	2	77 D. AEGERTER	18.447
3	21 R. KRUMMENACHER	33.496	3	16 J. CLUZEL	29.911	3	66 N. TUULI	22.537	3	4 S. ODENDAAL	18.457
4	4 S. ODENDAAL	33.511	4	77 D. AEGERTER	29.949	4	3 R. DE ROSA	22.570	4	5 P. OETTL	18.490
5	77 D. AEGERTER	33.513	5	94 F. CARICASULO	29.993	5	4 S. ODENDAAL	22.589	5	66 N. TUULI	18.493
6	16 J. CLUZEL	33.521	6	66 N. TUULI	29.999	6	61 C. ONCU	22.596	6	21 R. KRUMMENACHER	18.540
7	94 F. CARICASULO	33.580	7	61 C. ONCU	30.072	7	77 D. AEGERTER	22.643	7	52 P. HOBELSBERGER	18.572
8	5 P. OETTL	33.604	8	28 G. VAN STRAALEN	30.089	8	94 F. CARICASULO	22.654	8	38 H. SOOMER	18.606
9	66 N. TUULI	33.642	9	3 R. DE ROSA	30.101	9	21 R. KRUMMENACHER	22.654	9	16 J. CLUZEL	18.642
10	61 C. ONCU	33.659	10	21 R. KRUMMENACHER	30.101	10	28 G. VAN STRAALEN	22.663	10	81 M. GONZALEZ	18.647
11	3 R. DE ROSA	33.699	11	91 Y. MONTELLA	30.116	11	91 Y. MONTELLA	22.719	11	50 O. VOSTATEK	18.670
12	91 Y. MONTELLA	33.708	12	5 P. OETTL	30.132	12	25 M. BRENNER	22.752	12	91 Y. MONTELLA	18.673
13	56 P. SEBESTYEN	33.761	13	56 P. SEBESTYEN	30.183	13	34 K. MANFREDI	22.778	13	56 P. SEBESTYEN	18.678
14	24 L. TACCINI	33.780	14	38 H. SOOMER	30.236	14	38 H. SOOMER	22.788	14	95 V. TAKALA	18.678
15	38 H. SOOMER	33.825	15	34 K. MANFREDI	30.254	15	56 P. SEBESTYEN	22.804	15	94 F. CARICASULO	18.681
16	40 U. ORRADRE	33.830	16	52 P. HOBELSBERGER	30.267	16	24 L. TACCINI	22.814	16	25 M. BRENNER	18.716
17	40 U. ORRADRE	33.838	17	25 M. BRENNER	30.338	17	5 P. OETTL	22.830	17	61 C. ONCU	18.733
18	28 G. VAN STRAALEN	33.872	18	50 O. VOSTATEK	30.351	18	50 O. VOSTATEK	22.836	18	22 F. FULIGNI	18.771
19	22 F. FULIGNI	33.945	19	24 L. TACCINI	30.507	19	22 F. FULIGNI	22.866	19	6 M. HERRERA	18.801
20	96 D. SANCHIS MARTINEZ	34.013	20	22 F. FULIGNI	30.538	20	96 D. SANCHIS MARTINEZ	22.885	20	92 B. VAN EERDE	18.810
21	6 M. HERRERA	34.017	21	6 M. HERRERA	30.559	21	92 B. VAN EERDE	22.894	21	28 G. VAN STRAALEN	18.822
22	25 M. BRENNER	34.027	22	92 B. VAN EERDE	30.572	22	52 P. HOBELSBERGER	22.917	22	24 L. TACCINI	18.831
23	95 V. TAKALA	34.028	23	42 S. FROSSARD	30.619	23	6 M. HERRERA	22.941	23	55 G. HENDRA PRATAMA	18.859
24	50 O. VOSTATEK	34.030	24	95 V. TAKALA	30.641	24	42 S. FROSSARD	22.960	24	34 K. MANFREDI	18.867
25	55 G. HENDRA PRATAMA	34.048	25	55 G. HENDRA PRATAMA	30.643	25	40 U. ORRADRE	22.988	25	96 D. SANCHIS MARTINEZ	18.915
26	92 B. VAN EERDE	34.139	26	40 U. ORRADRE	30.659	26	95 V. TAKALA	23.019	26	40 U. ORRADRE	18.941
27	42 S. FROSSARD	34.157	27	96 D. SANCHIS MARTINEZ	30.662	27	55 G. HENDRA PRATAMA	23.162	27	82 P. ROMERO BARBOSA	18.966
28	2 L. MONTELLA	34.404	28	2 L. MONTELLA	30.898	28	2 L. MONTELLA	23.267	28	2 L. MONTELLA	19.060
29	82 P. ROMERO BARBOSA	34.631	29	82 P. ROMERO BARBOSA	31.088	29	82 P. ROMERO BARBOSA	23.377	29	42 S. FROSSARD	19.081
30	69 E. MONTERO HUERTA	34.797	30	69 E. MONTERO HUERTA	31.293	30	69 E. MONTERO HUERTA	23.651	30	69 E. MONTERO HUERTA	19.343

02/10/2021

These data/results cannot be reproduced, stored and/or transmitted in whole or in part by any manner of electronic, mechanical, photocopying, recording, broadcasting or otherwise now known or herein after developed without the previous express consent by the copyright owner, except for reproduction in daily press and regular printed publications on sale to the public within 60 days of the event related to those data/results and always provided that copyright symbol appears together as follows below.

© DORNA WSBK ORGANIZATION Srl 2021



## Motul Portuguese Round, 1-3 October 2021

### Chronological Analysis Race 1

Portimao 4.592 m

Start at 15:15'50.188

1 / 5

1° 16 J. CLUZEL (1'44.783)							
Lap	Seg.1	Seg.2	Seg.3	Seg.4	Lap Time	km/h	Local Time
1		30.321	22.896	<b>18.642</b>	1'47.517	159,8	15:17'37.705
2	33.971	30.120	22.744	18.822	1'45.657	<b>268,2</b>	15:19'23.362
3	33.965	29.940	22.436	18.754	1'45.095	264,9	15:21'08.457
4	33.891	30.093	22.440	18.771	1'45.195	260,5	15:22'53.652
5	33.824	30.171	22.476	18.740	1'45.211	259,2	15:24'38.863
6	33.728	30.452	22.626	18.831	1'45.637	267,6	15:26'24.500
7	33.817	30.023	22.579	18.887	1'45.306	263,7	15:28'09.806
8	33.724	30.067	22.504	18.985	1'45.280	263,0	15:29'55.086
9	33.914	30.092	22.678	18.986	1'45.670	261,7	15:31'40.756
10	34.087	30.329	22.687	18.783	1'45.886	262,4	15:33'26.642
11	33.629	30.097	22.550	19.082	1'45.358	264,9	15:35'12.000
12	33.741	29.963	22.583	18.894	1'45.181	264,3	15:36'57.181
13	33.820	29.966	22.470	18.741	1'44.997	263,7	15:38'42.178
14	33.871	29.945	22.556	18.926	1'45.298	263,7	15:40'27.476
15	33.953	29.993	22.579	18.935	1'45.460	262,4	15:42'12.936
16	33.825	29.953	22.581	18.871	1'45.230	263,0	15:43'58.166
17	<b>33.521</b>	<b>29.911</b>	<b>22.433</b>	18.918	<b>1'44.783</b>	264,9	15:45'42.949
Race Time 29'52.761							

2° 81 M. GONZALEZ (1'44.814)							
Lap	Seg.1	Seg.2	Seg.3	Seg.4	Lap Time	km/h	Local Time
1		30.217	22.887	18.667	1'47.702	164,4	15:17'37.890
2	33.982	30.074	22.791	18.738	1'45.585	270,9	15:19'23.475
3	33.588	29.925	22.528	18.955	1'44.996	266,9	15:21'08.471
4	33.664	29.942	22.469	18.997	1'45.072	261,7	15:22'53.543
5	33.654	29.970	<b>22.437</b>	18.887	1'44.948	260,5	15:24'38.491
6	35.817	29.933	22.689	18.757	1'47.196	262,4	15:26'25.687
7	33.566	29.997	22.589	18.725	1'44.877	<b>274,3</b>	15:28'10.564
8	33.604	30.122	22.770	18.734	1'45.230	268,9	15:29'55.794
9	33.609	30.218	22.579	<b>18.647</b>	1'45.053	272,9	15:31'40.847
10	34.039	30.097	22.774	18.829	1'45.739	262,4	15:33'26.586
11	33.828	30.164	22.549	19.054	1'45.595	261,7	15:35'12.181
12	33.754	30.062	22.529	18.791	1'45.136	269,6	15:36'57.317
13	<b>33.442</b>	<b>29.877</b>	22.548	18.947	<b>1'44.814</b>	266,9	15:38'42.131
14	33.619	30.029	22.983	18.869	1'45.500	262,4	15:40'27.631
15	33.526	30.050	22.554	19.123	1'45.253	268,2	15:42'12.884
16	33.613	30.002	22.556	19.135	1'45.306	262,4	15:43'58.190
17	33.736	30.055	22.451	18.906	1'45.148	265,6	15:45'43.338
Race Time 29'53.150							

3° 77 D. AEGERTER (1'44.935)							
Lap	Seg.1	Seg.2	Seg.3	Seg.4	Lap Time	km/h	Local Time
1		30.418	23.033	19.006	1'47.307	159,4	15:17'37.495
2	34.530	30.231	22.772	18.654	1'46.187	260,5	15:19'23.682
3	34.028	30.197	22.686	18.645	1'45.556	271,6	15:21'09.238
4	<b>33.513</b>	30.054	<b>22.643</b>	18.837	1'45.047	268,9	15:22'54.285
5	33.608	30.028	22.646	18.653	<b>1'44.935</b>	263,0	15:24'39.220
6	33.662	30.333	22.792	18.839	1'45.626	264,9	15:26'24.846
7	33.647	30.046	22.684	18.759	1'45.136	263,7	15:28'09.982
8	33.667	30.140	22.720	18.875	1'45.402	266,9	15:29'55.384
9	33.798	30.092	22.733	18.815	1'45.438	259,2	15:31'40.822
10	33.713	30.271	22.776	18.974	1'45.734	263,0	15:33'26.556
11	34.362	30.116	22.731	18.757	1'45.966	261,7	15:35'12.522
12	33.846	30.138	22.660	18.709	1'45.353	267,6	15:36'57.875
13	34.030	30.084	<b>22.643</b>	18.552	1'45.309	266,9	15:38'43.184
14	33.752	30.128	22.737	18.643	1'45.260	268,9	15:40'28.444
15	33.602	30.106	22.826	<b>18.447</b>	1'44.981	268,2	15:42'13.425
16	33.712	30.014	<b>22.643</b>	18.627	1'44.996	<b>274,3</b>	15:43'58.421
17	33.742	<b>29.949</b>	22.841	18.561	1'45.093	270,2	15:45'43.514
Race Time 29'53.326							

4° 3 R. DE ROSA (1'44.941)							
Lap	Seg.1	Seg.2	Seg.3	Seg.4	Lap Time	km/h	Local Time
1		30.627	22.759	18.477	1'47.742	166,5	15:17'37.930

2	34.511	30.247	22.765	18.543	1'46.066	261,1	15:19'23.996
3	34.155	30.223	22.601	18.450	1'45.429	268,9	15:21'09.425
4	33.825	30.152	22.637	18.582	1'45.196	270,2	15:22'54.621
5	33.805	30.263	22.604	18.553	1'45.225	266,2	15:24'39.846
6	33.862	<b>30.101</b>	22.702	18.607	1'45.272	268,2	15:26'25.118
7	<b>33.699</b>	30.148	22.665	18.525	1'45.037	266,2	15:28'10.155
8	33.788	30.164	22.721	18.600	1'45.273	265,6	15:29'55.428
9	33.953	30.425	22.615	18.502	1'45.495	257,4	15:31'40.923
10	34.223	30.268	22.640	18.674	1'45.805	260,5	15:33'26.728
11	33.863	30.216	22.684	18.735	1'45.498	259,9	15:35'12.226
12	33.880	30.169	<b>22.570</b>	18.600	1'45.219	263,7	15:36'57.445
13	33.841	30.144	22.742	18.560	1'45.287	267,6	15:38'42.732
14	34.002	30.180	22.650	18.519	1'45.351	264,3	15:40'28.083
15	33.862	30.143	22.673	18.537	1'45.215	268,2	15:42'13.298
16	34.021	30.346	22.616	<b>18.396</b>	1'45.379	266,9	15:43'58.677
17	<b>33.699</b>	30.131	22.681	18.430	<b>1'44.941</b>	<b>272,3</b>	15:45'43.618
Race Time 29'53.430							

5° 66 N. TUULI (1'44.822)							
Lap	Seg.1	Seg.2	Seg.3	Seg.4	Lap Time	km/h	Local Time
1		30.341	22.955	18.734	1'47.492	160,3	15:17'37.680
2	34.604	30.080	22.908	18.532	1'46.124	262,4	15:19'23.804
3	34.135	30.173	22.677	18.593	1'45.578	265,6	15:21'09.382
4	34.166	30.048	22.630	18.673	1'45.517	266,9	15:22'54.899
5	33.873	30.078	22.643	18.577	1'45.171	266,2	15:24'40.070
6	33.948	<b>29.999</b>	22.760	18.678	1'45.385	<b>270,2</b>	15:26'25.455
7	34.090	30.036	22.722	18.634	1'45.482	264,3	15:28'10.937
8	33.708	30.030	22.643	18.513	1'44.894	262,4	15:29'55.831
9	33.849	30.327	22.630	<b>18.493</b>	1'45.299	266,9	15:31'41.130
10	34.314	30.135	22.658	18.552	1'45.659	266,9	15:33'26.789
11	34.328	30.059	22.787	18.613	1'45.787	259,9	15:35'12.576
12	34.005	30.107	22.648	18.640	1'45.400	264,3	15:36'57.976
13	33.755	30.050	22.572	18.502	1'44.879	268,9	15:38'42.855
14	<b>33.642</b>	30.044	<b>22.537</b>	18.599	<b>1'44.822</b>	268,9	15:40'27.677
15	34.007	30.016	22.616	18.715	1'45.354	266,2	15:42'13.031
16	34.206	30.171	22.606	18.631	1'45.614	263,0	15:43'58.645
17	34.061	30.063	22.686	18.593	1'45.403	263,7	15:45'44.048
Race Time 29'53.860							

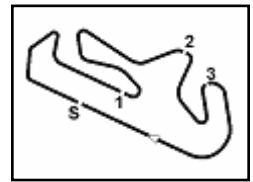
6° 4 S. ODENDAAL (1'44.942)							
Lap	Seg.1	Seg.2	Seg.3	Seg.4	Lap Time	km/h	Local Time
1		30.544	22.825	19.016	1'48.690	167,0	15:17'38.878
2	33.866	30.121	22.736	<b>18.457</b>	1'45.180	269,6	15:19'24.058
3	34.320	30.127	22.812	18.682	1'45.941	266,9	15:21'09.999
4	33.827	<b>29.905</b>	22.871	18.722	1'45.325	271,6	15:22'55.324
5	33.742	30.094	22.773	18.735	1'45.344	271,6	15:24'40.668
6	33.912	30.283	22.731	18.595	1'45.521	270,2	15:26'26.189
7	33.707	30.051	22.771	18.636	1'45.165	268,2	15:28'11.354
8	33.692	30.045	23.009	18.757	1'45.503	<b>272,9</b>	15:29'56.857
9	33.856	30.194	22.887	18.858	1'45.795	268,9	15:31'42.652
10	34.016	30.091	22.702	18.818	1'45.627	267,6	15:33'28.279
11	33.767	30.074	22.766	18.678	1'45.285	265,6	15:35'13.564
12	33.702	30.094	22.720	18.699	1'45.215	270,2	15:36'58.779
13	33.670	30.113	<b>22.589</b>	18.570	<b>1'44.942</b>	268,2	15:38'43.721
14	33.617	29.955	22.875	18.652	1'45.099	<b>272,9</b>	15:40'28.820
15	<b>33.511</b>	29.991	22.820	18.718	1'45.040	<b>272,9</b>	15:42'13.860
16	33.749	30.249	22.763	18.588	1'45.349	271,6	15:43'59.209
17	33.679	30.147	22.709	18.691	1'45.226	271,6	15:45'44.435
Race Time 29'54.247							

7° 21 R. KRUMMENACHER (1'45.152)							
Lap	Seg.1	Seg.2	Seg.3	Seg.4	Lap Time	km/h	Local Time
1		30.824	22.926	18.576	1'49.242	176,5	15:17'39.430
2	34.015	30.224	22.789	<b>18.540</b>	1'45.568	268,2	15:19'24.998
3	34.247	30.116	22.805	18.618	1'45.786	266,9	15:21'10.784
4	33.818	30.229	22.854	18.693	1'45.594	<b>270,9</b>	15:22'56.378

02/10/2021 P = Pits In/Out - C = Lap Time Cancelled

These data/results cannot be reproduced, stored and/or transmitted in whole or in part by any manner of electronic, mechanical, photocopying, recording, broadcasting or otherwise now known or herein after developed without the previous express consent by the copyright owner, except for reproduction in daily press and regular printed publications on sale to the public within 60 days of the event related to those data/results and always provided that copyright symbol appears together as follows below.

© DORNA WSBK ORGANIZATION Srl 2021



## Motul Portuguese Round, 1-3 October 2021

### Chronological Analysis Race 1

Portimao 4.592 m

Start at 15:15'50.188

**2 / 5**

5	34.125	30.291	22.749	18.632	1'45.797	270,2	15:24'42.175	8	33.931	30.228	22.860	18.691	1'45.710	268,9	15:29'59.753
6	34.063	30.204	22.884	18.709	1'45.860	262,4	15:26'28.035	9	33.755	30.292	22.824	18.815	1'45.686	268,2	15:31'45.439
7	33.875	30.108	22.735	18.738	1'45.456	<b>270,9</b>	15:28'13.491	10	33.809	30.315	22.825	18.873	1'45.822	268,2	15:33'31.261
8	<b>33.496</b>	30.432	22.763	18.824	1'45.515	264,9	15:29'59.006	11	33.795	30.253	22.876	18.856	1'45.780	260,5	15:35'17.041
9	33.819	30.254	22.757	18.843	1'45.673	264,3	15:31'44.679	12	33.861	30.225	22.889	18.874	1'45.849	261,7	15:37'02.890
10	33.625	30.215	22.693	18.836	1'45.369	264,3	15:33'30.048	13	33.897	30.288	22.898	18.856	1'45.939	263,0	15:38'48.829
11	33.651	30.114	22.659	18.728	<b>1'45.152</b>	264,3	15:35'15.200	14	33.968	30.206	22.983	18.847	1'46.004	262,4	15:40'34.833
12	33.682	30.129	22.746	18.919	1'45.476	266,9	15:37'00.676	15	<b>33.708</b>	30.352	22.885	19.001	1'45.946	261,7	15:42'20.779
13	33.626	30.305	<b>22.654</b>	18.912	1'45.497	264,9	15:38'46.173	16	34.143	30.263	22.906	18.734	1'46.046	263,7	15:44'06.825
14	33.583	30.304	22.817	18.893	1'45.597	265,6	15:40'31.770	17	33.764	30.297	22.854	<b>18.673</b>	1'45.588	268,9	15:45'52.413
15	33.659	<b>30.101</b>	22.685	19.021	1'45.466	263,0	15:42'17.236								Race Time 30'02.225
16	33.651	30.205	22.787	18.918	1'45.561	264,9	15:44'02.797								
17	33.764	30.280	22.755	18.872	1'45.671	264,9	15:45'48.468								
								Race Time 29'58.280							

8° 61 C. ONCU (1'45.332)															
Lap	Seg.1	Seg.2	Seg.3	Seg.4	Lap Time	km/h	Local Time								
1		30.358	23.064	18.796	1'47.331	163,4	15:17'37.519								
2	33.896	30.221	22.668	19.041	1'45.826	261,7	15:19'23.345								
3	34.222	30.166	<b>22.596</b>	18.806	1'45.790	261,7	15:21'09.135								
4	33.833	<b>30.072</b>	22.688	18.766	1'45.359	264,9	15:22'54.494								
5	<b>33.659</b>	30.305	22.604	18.764	<b>1'45.332</b>	266,2	15:24'39.826								
6	34.627	30.177	22.708	<b>18.733</b>	1'46.245	<b>269,6</b>	15:26'26.071								
7	34.015	30.282	22.722	18.869	1'45.888	260,5	15:28'11.959								
8	33.835	30.240	22.749	18.886	1'45.710	263,0	15:29'57.669								
9	33.829	30.292	22.725	18.917	1'45.763	263,7	15:31'43.432								
10	33.730	30.264	22.709	18.961	1'45.664	261,1	15:33'29.096								
11	33.779	30.316	22.765	19.051	1'45.911	264,3	15:35'15.007								
12	34.174	30.356	22.829	19.099	1'46.458	263,0	15:37'01.465								
13	33.942	30.467	22.729	18.931	1'46.069	264,3	15:38'47.534								
14	33.847	30.298	22.796	18.993	1'45.934	262,4	15:40'33.468								
15	33.774	30.619	22.826	19.072	1'46.291	261,1	15:42'19.759								
16	33.883	30.392	22.982	19.044	1'46.301	261,1	15:44'06.060								
17	33.957	30.278	22.766	18.939	1'45.940	261,7	15:45'52.000								
								Race Time 30'01.812							

9° 5 P. OETTL (1'45.541)															
Lap	Seg.1	Seg.2	Seg.3	Seg.4	Lap Time	km/h	Local Time								
1		30.597	22.865	18.717	1'48.814	170,6	15:17'39.002								
2	34.168	30.152	22.956	18.543	1'45.819	270,2	15:19'24.821								
3	34.047	30.174	<b>22.830</b>	<b>18.490</b>	<b>1'45.541</b>	273,6	15:21'10.362								
4	33.941	<b>30.132</b>	22.896	18.691	1'45.660	<b>276,4</b>	15:22'56.022								
5	33.979	30.189	22.877	18.768	1'45.813	268,2	15:24'41.835								
6	34.163	30.142	22.986	18.824	1'46.115	263,0	15:26'27.950								
7	34.135	30.146	22.852	18.520	1'45.653	270,9	15:28'13.603								
8	33.700	30.371	22.868	18.785	1'45.724	268,9	15:29'59.327								
9	33.850	30.290	22.905	18.784	1'45.829	265,6	15:31'45.156								
10	33.662	30.925	22.911	18.616	1'46.114	267,6	15:33'31.270								
11	34.105	30.368	22.878	18.755	1'46.106	260,5	15:35'17.376								
12	33.916	30.341	22.893	18.766	1'45.916	268,2	15:37'03.292								
13	33.780	30.437	23.178	18.661	1'46.056	269,6	15:38'49.348								
14	33.714	30.415	22.955	18.702	1'45.786	266,2	15:40'35.134								
15	33.778	30.460	22.856	18.705	1'45.799	268,2	15:42'20.933								
16	<b>33.604</b>	30.350	22.894	18.768	1'45.616	270,9	15:44'06.549								
17	33.752	30.256	22.997	18.667	1'45.672	268,2	15:45'52.221								
								Race Time 30'02.033							

10° 91 Y. MONTELLA (1'45.575)							
Lap	Seg.1	Seg.2	Seg.3	Seg.4	Lap Time	km/h	Local Time
1		30.631	23.015	18.754	1'49.228	170,9	15:17'39.416
2	34.405	30.222	22.772	18.737	1'46.136	270,2	15:19'25.552
3	34.034	<b>30.116</b>	22.748	18.678	1'45.576	267,6	15:21'11.128
4	33.759	30.252	22.777	18.787	<b>1'45.575</b>	269,6	15:22'56.703
5	34.001	30.295	22.807	18.721	1'45.824	270,2	15:24'42.527
6	33.970	30.174	22.865	18.688	1'45.697	268,9	15:26'28.224
7	34.076	30.290	<b>22.719</b>	18.734	1'45.819	<b>273,6</b>	15:28'14.043

11° 56 P. SEBESTYEN (1'45.705)															
Lap	Seg.1	Seg.2	Seg.3	Seg.4	Lap Time	km/h	Local Time								
1		31.447	23.004	18.826	1'50.913	178,2	15:17'41.101								
2	34.166	30.817	22.928	18.829	1'46.740	<b>272,3</b>	15:19'27.841								
3	33.993	30.419	22.900	18.746	1'46.058	271,6	15:21'13.899								
4	34.004	30.396	22.859	18.901	1'46.160	263,7	15:23'00.059								
5	34.623	30.445	22.833	<b>18.678</b>	1'46.579	266,2	15:24'46.638								
6	34.222	30.471	23.168	18.739	1'46.600	271,6	15:26'33.238								
7	34.051	30.480	22.843	18.805	1'46.179	269,6	15:28'19.417								
8	33.838	30.455	22.912	18.813	1'46.018	266,2	15:30'05.435								
9	34.148	30.347	23.083	18.841	1'46.419	268,9	15:31'51.854								
10	34.046	30.404	22.981	18.900	1'46.331	267,6	15:33'38.185								
11	<b>33.761</b>	30.218	22.982	18.744	<b>1'45.705</b>	269,6	15:35'23.890								
12	33.788	30.867	22.897	18.879	1'46.431	265,6	15:37'10.321								
13	33.915	30.321	22.836	18.799	1'45.871	264,9	15:38'56.192								
14	33.847	<b>30.183</b>	<b>22.804</b>	18.988	1'45.822	264,9	15:40'42.014								
15	34.130	30.815	23.087	18.774	1'46.806	261,1	15:42'28.820								
16	33.880	30.326	23.016	18.749	1'45.971	264,9	15:44'14.791								
17	33.974	30.495	22.901	18.912	1'46.282	261,7	15:46'01.073								
								Race Time 30'10.885							

12° 52 P. HOBELSBERGER (1'45.607)															
Lap	Seg.1	Seg.2	Seg.3	Seg.4	Lap Time	km/h	Local Time								
1		31.511	22.943	18.800	1'50.664	172,0	15:17'40.852								
2	34.275	30.747	23.348	18.664	1'47.034	272,3	15:19'27.886								
3	34.109	30.479	22.922	18.666	1'46.176	270,2	15:21'14.062								
4	34.394	<b>30.267</b>	22.958	<b>18.572</b>	1'46.191	272,3	15:23'00.253								
5	34.123	30.431	<b>22.917</b>	18.671	1'46.142	267,6	15:24'46.395								
6	34.271	30.464	23.201	18.746	1'46.682	269,6	15:26'33.077								
7	<b>33.430</b>	30.294	22.990	18.893	<b>1'45.607</b>	<b>273,6</b>	15:28'18.684								
8	33.796	30.751	22.944	18.811	1'46.302	268,2	15:30'04.986								
9	33.511	30.530	23.095	18.936	1'46.072	263,0	15:31'51.058								
10	33.757	30.520	23.072	18.984	1'46.333	263,7	15:33'37.391								
11	33.706	30.557	23.077	18.916	1'46.256	263,7	15:35'23.647								
12	33.565	30.554	23.058	18.938	1'46.115	264,3	15:37'09.762								
13	33.589	30.405	22.981	18.860	1'45.835	263,7	15:38'55.597								
14	33.620	30.403	23.706	18.882	1'46.611	264,9	15:40'42.208								
15	33.572	30.983	23.111	18.902	1'46.568	268,9	15:42'28.776								
16	33.588	30.370	23.150	18.885	1'45.993	264,9	15:44'14.769								
17	34.218	30.552	22.991	18.791	1'46.552	263,0	15:46'01.321								
								Race Time 30'11.133							

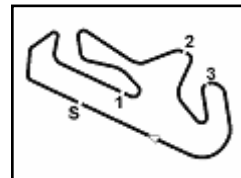
13° 38 H. SOOMER (1'45.978)							
Lap	Seg.1	Seg.2	Seg.3	Seg.4	Lap Time	km/h	Local Time
1		30.942	22.911	19.067	1'50.041	174,5	15:17'40.229
2	34.724	30.752	22.913	18.709	1'47.098	265,6	15:19'27.327
3	33.922	30.561	22.945	18.826	1'46.254	<b>272,9</b>	15:21'13.581
4	33.983	30.346	22.821	18.910	1'46.060	264,3	15:22'59.641
5	34.063	30.594	<b>22.788</b>	19.021	1'46.466	261,1	15:24'46.107
6	34.358	30.503	23.027	18.934	1'46.822	258,6	15:26'32.929
7	34.059	<b>30.236</b>	22.925	18.831	1'46.051	262,4	15:28'18.980
8	33.949	30.463	22.998	18.780	1'46.190	263,7	15:30'05.170
9	34.163	30.384	23.021	<b>18.606</b>	1'46.174	265,6	15:31'51.344
10	<b>33.825</b>	30.706	22.856	18.930	1'46.317	266,2	15:33'37.661

02/10/2021

P = Pits In/Out - C = Lap Time Cancelled

These data/results cannot be reproduced, stored and/or transmitted in whole or in part by any manner of electronic, mechanical, photocopying, recording, broadcasting or otherwise now known or herein after developed without the previous express consent by the copyright owner, except for reproduction in daily press and regular printed publications on sale to the public within 60 days of the event related to those data/results and always provided that copyright symbol appears together as follows below.

© DORNA WSBK ORGANIZATION Srl 2021



Portimao 4.592 m

## Motul Portuguese Round, 1-3 October 2021

### Chronological Analysis Race 1

Start at 15:15'50.188

3 / 5

Lap	Seg.1	Seg.2	Seg.3	Seg.4	Lap Time	km/h	Local Time
11	33.947	30.271	23.036	18.864	1'46.118	265,6	15:35'23.779
12	34.195	30.743	23.121	18.871	1'46.930	263,0	15:37'10.709
13	34.042	30.423	22.941	18.838	1'46.244	266,9	15:38'56.953
14	34.015	30.330	23.059	18.854	1'46.258	265,6	15:40'43.211
15	33.915	30.423	22.986	18.738	1'46.062	260,5	15:42'29.273
16	33.877	30.311	23.062	18.728	1'45.978	263,0	15:44'15.251
17	33.955	30.581	22.895	18.965	1'46.396	266,2	15:46'01.647
Race Time 30'11.459							

14° 94 F. CARICASULO (1'45.511)							
Lap	Seg.1	Seg.2	Seg.3	Seg.4	Lap Time	km/h	Local Time
1		30.546	22.791	18.959	1'48.790	170,9	15:17'38.978
2	33.955	30.221	22.654	18.681	1'45.511	275,7	15:19'24.489
3	34.129	30.159	22.721	18.718	1'45.727	275,0	15:21'10.216
4	33.826	29.993	23.087	18.851	1'45.757	270,2	15:22'55.973
5	34.292	30.281	22.692	18.799	1'46.064	267,6	15:24'42.037
6	33.618	30.150	22.786	19.115	1'45.669	273,6	15:26'27.706
7	33.767	30.148	22.902	18.952	1'45.769	264,3	15:28'13.475
8	34.062	30.459	22.797	18.895	1'46.213	261,7	15:29'59.688
9	33.977	30.325	22.769	18.969	1'46.040	256,8	15:31'45.728
10	33.774	30.393	22.916	18.900	1'45.983	268,9	15:33'31.711
11	33.802	30.376	22.858	18.847	1'45.883	266,9	15:35'17.594
12	33.811	30.465	22.866	18.797	1'45.939	272,3	15:37'03.533
13	33.755	30.442	23.215	18.770	1'46.182	272,3	15:38'49.715
14	33.580	30.342	25.826	19.313	1'49.061	268,9	15:40'38.776
15	34.072	32.570	26.871	19.245	1'52.758	260,5	15:42'31.534
16	34.025	30.501	22.999	19.167	1'46.692	263,0	15:44'18.226
17	33.934	30.551	22.858	19.428	1'46.771	263,0	15:46'04.997
Race Time 30'14.809							

15° 50 O. VOSTATEK (1'46.267)							
Lap	Seg.1	Seg.2	Seg.3	Seg.4	Lap Time	km/h	Local Time
1		31.849	23.353	18.970	1'52.371	176,2	15:17'42.559
2	34.206	30.674	23.020	19.043	1'46.943	267,6	15:19'29.502
3	34.034	30.727	22.836	18.670	1'46.267	269,6	15:21'15.769
4	34.558	30.596	23.092	18.813	1'47.059	271,6	15:23'02.828
5	34.039	30.444	24.540	19.041	1'48.064	266,9	15:24'50.892
6	34.169	30.746	23.129	19.113	1'47.157	259,9	15:26'38.049
7	34.442	30.853	23.024	18.920	1'47.239	255,0	15:28'25.288
8	34.366	30.868	22.955	18.998	1'47.187	253,2	15:30'12.475
9	34.481	30.744	23.355	18.856	1'47.436	256,8	15:31'59.911
10	34.030	30.351	22.991	19.142	1'46.514	264,3	15:33'46.425
11	34.286	30.523	22.900	19.109	1'46.818	253,8	15:35'33.243
12	34.170	30.569	22.893	19.240	1'46.872	255,6	15:37'20.115
13	34.192	30.463	23.075	19.065	1'46.795	255,0	15:39'06.910
14	34.223	30.506	23.013	19.141	1'46.883	255,6	15:40'53.793
15	34.091	30.651	22.850	19.122	1'46.714	255,6	15:42'40.507
16	34.634	30.776	23.220	18.913	1'47.543	254,4	15:44'28.050
17	34.597	30.840	23.046	19.051	1'47.534	255,6	15:46'15.584
Race Time 30'25.396							

16° 24 L. TACCINI (1'46.461)							
Lap	Seg.1	Seg.2	Seg.3	Seg.4	Lap Time	km/h	Local Time
1		31.449	23.359	18.896	1'51.955	185,2	15:17'42.143
2	33.958	30.760	23.054	18.834	1'46.606	265,6	15:19'28.749
3	34.017	31.333	22.814	18.831	1'46.995	267,6	15:21'15.744
4	34.374	30.594	23.095	18.933	1'46.996	270,2	15:23'02.740
5	33.780	30.640	23.411	19.054	1'46.885	264,3	15:24'49.625
6	34.206	31.768	23.575	19.015	1'48.564	262,4	15:26'38.189
7	34.109	30.978	22.859	19.134	1'47.080	263,0	15:28'25.269
8	34.183	30.939	22.941	19.102	1'47.165	259,2	15:30'12.434
9	34.200	30.887	23.015	19.217	1'47.319	259,2	15:31'59.753
10	34.596	30.567	23.096	19.163	1'47.422	257,4	15:33'47.175
11	34.013	30.824	22.987	19.125	1'46.949	258,6	15:35'34.124
12	34.004	30.733	22.972	19.078	1'46.787	260,5	15:37'20.911
13	33.990	30.647	22.988	18.965	1'46.590	261,1	15:39'07.501

17° 22 F. FULIGNI (1'46.416)							
Lap	Seg.1	Seg.2	Seg.3	Seg.4	Lap Time	km/h	Local Time
1		31.443	22.910	19.040	1'51.419	180,6	15:17'41.607
2	34.169	30.643	22.949	18.963	1'46.724	268,9	15:19'28.331
3	34.052	31.101	24.414	18.771	1'48.338	266,9	15:21'16.669
4	34.209	30.651	22.967	18.874	1'46.701	268,9	15:23'03.370
5	34.121	30.646	24.799	19.213	1'48.779	269,6	15:24'52.149
6	34.430	30.769	23.119	19.128	1'47.446	262,4	15:26'39.595
7	34.126	31.095	23.125	18.951	1'47.297	264,3	15:28'26.892
8	34.184	30.726	22.874	19.048	1'46.832	262,4	15:30'13.724
9	34.219	30.714	22.969	19.020	1'46.922	261,7	15:32'00.646
10	34.300	30.662	22.911	19.144	1'47.017	266,2	15:33'47.663
11	34.215	31.032	22.866	19.087	1'47.200	262,4	15:35'34.863
12	33.945	30.810	22.875	19.127	1'46.757	261,7	15:37'21.620
13	34.094	30.873	23.008	19.039	1'47.014	263,0	15:39'08.634
14	34.144	30.538	22.968	19.061	1'46.711	261,7	15:40'55.345
15	34.047	30.605	22.963	18.951	1'46.566	261,1	15:42'41.911
16	34.042	30.628	22.925	18.821	1'46.416	261,1	15:44'28.327
17	34.613	31.042	23.048	19.135	1'47.838	263,7	15:46'16.165
Race Time 30'25.977							

18° 6 M. HERRERA (1'46.837)							
Lap	Seg.1	Seg.2	Seg.3	Seg.4	Lap Time	km/h	Local Time
1		32.370	23.324	19.051	1'53.921	187,8	15:17'44.109
2	34.017	30.856	23.211	19.017	1'47.101	270,2	15:19'31.210
3	34.519	30.833	23.041	18.801	1'47.194	268,2	15:21'18.404
4	34.144	30.624	22.941	19.146	1'46.855	266,2	15:23'05.259
5	34.073	30.721	24.088	18.996	1'47.878	266,9	15:24'53.137
6	34.224	30.962	23.048	19.167	1'47.401	259,9	15:26'40.538
7	34.187	30.779	23.000	18.932	1'46.898	266,2	15:28'27.436
8	34.086	32.172	22.991	19.072	1'48.321	263,7	15:30'15.757
9	34.273	30.683	22.962	18.953	1'46.871	263,0	15:32'02.628
10	34.209	30.717	23.008	18.903	1'46.837	264,9	15:33'49.465
11	34.500	30.559	23.117	19.201	1'47.377	267,6	15:35'36.842
12	34.123	30.743	23.038	19.359	1'47.263	261,7	15:37'24.105
13	34.193	30.683	22.987	19.323	1'47.186	261,7	15:39'11.291
14	34.367	30.720	23.485	19.066	1'47.638	259,9	15:40'58.929
15	34.703	30.872	23.046	18.867	1'47.488	255,6	15:42'46.417
16	34.542	30.909	23.206	18.847	1'47.504	255,6	15:44'33.921
17	34.268	30.681	23.394	18.865	1'47.208	261,1	15:46'21.129
Race Time 30'30.941							

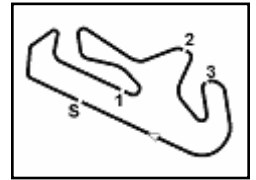
19° 25 M. BRENNER (1'46.172)							
Lap	Seg.1	Seg.2	Seg.3	Seg.4	Lap Time	km/h	Local Time
1		30.776	22.924	18.716	1'50.114	176,5	15:17'40.302
2	34.122	30.511	22.752	18.976	1'46.361	270,2	15:19'26.663
3	34.027	30.366	22.851	18.928	1'46.172	266,9	15:21'12.835
4	34.071	30.338	24.850	18.947	1'48.206	264,3	15:23'01.041
5	34.033	30.423	22.881	19.042	1'46.379	270,2	15:24'47.420
6	34.094	30.564	25.743	19.217	1'49.618	266,2	15:26'37.038
7	34.252	30.656	22.972	19.128	1'47.008	263,0	15:28'24.046
8	34.628	30.860	23.046	19.353	1'47.887	261,1	15:30'11.933
9	34.901	30.728	23.267	19.029	1'47.925	259,2	15:31'59.858
10	34.310	33.564	23.187	18.995	1'50.056	266,2	15:33'49.914
11	34.317	30.643	22.976	19.140	1'47.076	268,2	15:35'36.990
12	34.614	30.703	23.012	19.142	1'47.471	264,3	15:37'24.461
13	34.123	31.143	22.996	19.060	1'47.322	269,6	15:39'11.783
14	34.076	30.676	23.041	19.304	1'47.097	266,2	15:40'58.880
15	34.263	30.767	23.236	19.179	1'47.445	260,5	15:42'46.325
16	34.192	30.906	23.802	18.987	1'47.887	261,7	15:44'34.212

02/10/2021 P = Pits In/Out - C = Lap Time Cancelled

These data/results cannot be reproduced, stored and/or transmitted in whole or in part by any manner of electronic, mechanical, photocopying, recording, broadcasting or otherwise now known or herein after developed without the previous express consent by the copyright owner, except for reproduction in daily press and regular printed publications on sale to the public within 60 days of the event related to those data/results and always provided that copyright symbol appears together as follows below.

© DORNA WSBK ORGANIZATION Srl 2021





## Motul Portuguese Round, 1-3 October 2021

### Chronological Analysis Race 1

Portimao 4.592 m

Start at 15:15'50.188

4 / 5

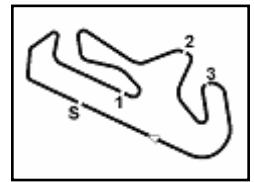
20°								23°							
92 B. VAN EERDE (1'46.777)								42 S. FROSSARD (1'47.297)							
Lap	Seg.1	Seg.2	Seg.3	Seg.4	Lap Time	km/h	Local Time	Lap	Seg.1	Seg.2	Seg.3	Seg.4	Lap Time	km/h	Local Time
1		31.804	23.400	19.091	1'52.746	188,8	15:17'42.934	1		32.760	23.668	19.081	1'54.635	186,2	15:17'44.823
2	34.396	30.677	<b>22.894</b>	<b>18.810</b>	<b>1'46.777</b>	263,7	15:19'29.711	2	34.343	31.378	23.545	19.295	1'48.561	<b>273,6</b>	15:19'33.384
3	34.704	30.723	23.074	18.953	1'47.454	<b>272,3</b>	15:21'17.165	3	34.452	30.952	23.257	19.369	1'48.030	270,9	15:21'21.414
4	34.677	30.637	23.410	19.232	1'47.956	264,9	15:23'05.121	4	34.307	30.749	23.138	19.335	1'47.529	261,1	15:23'08.943
5	34.531	30.633	23.679	19.187	1'48.030	260,5	15:24'53.151	5	34.612	33.445	23.374	19.322	1'50.753	261,7	15:24'59.696
6	34.503	30.789	23.202	19.083	1'47.577	263,7	15:26'40.728	6	34.530	31.301	23.085	19.435	1'48.351	263,7	15:26'48.047
7	<b>34.139</b>	30.767	23.160	19.043	1'47.109	268,9	15:28'27.837	7	34.585	31.093	23.566	19.208	1'48.452	263,0	15:28'36.499
8	34.547	30.740	23.036	19.071	1'47.394	261,7	15:30'15.231	8	34.426	31.046	23.174	19.315	1'47.961	261,7	15:30'24.460
9	34.362	30.715	23.057	18.969	1'47.103	262,4	15:32'02.334	9	34.202	30.799	23.085	19.378	1'47.464	259,2	15:32'11.924
10	34.280	<b>30.572</b>	23.078	19.000	1'46.930	264,3	15:33'49.264	10	34.287	30.749	22.978	19.318	1'47.332	259,9	15:33'59.256
11	34.405	30.629	23.267	19.285	1'47.586	261,7	15:35'36.850	11	34.605	30.806	23.085	19.339	1'47.835	258,6	15:35'47.091
12	35.045	30.689	23.233	18.942	1'47.909	259,9	15:37'24.759	12	34.311	30.975	23.217	19.494	1'47.997	261,1	15:37'35.088
13	34.244	30.917	23.117	18.907	1'47.185	261,7	15:39'11.944	13	34.400	<b>30.619</b>	<b>22.960</b>	19.318	<b>1'47.297</b>	261,1	15:39'22.385
14	34.322	30.725	23.111	18.836	1'46.994	267,6	15:40'58.938	14	<b>34.157</b>	30.860	23.017	19.540	1'47.574	260,5	15:41'09.959
15	34.513	30.712	23.112	19.124	1'47.461	257,4	15:42'46.399	15	34.259	31.125	23.010	19.408	1'47.802	259,9	15:42'57.761
16	34.319	30.912	23.153	19.156	1'47.540	261,1	15:44'33.939	16	34.196	30.846	24.290	19.448	1'48.780	261,1	15:44'46.541
17	34.649	30.966	23.029	18.980	1'47.624	263,0	15:46'21.563	17	34.201	31.301	24.450	20.123	1'50.075	260,5	15:46'36.616
Race Time 30'30.986								Race Time 30'46.428							
21°								24°							
95 V. TAKALA (1'46.707)								2 L. MONTELLA (1'48.020)							
Lap	Seg.1	Seg.2	Seg.3	Seg.4	Lap Time	km/h	Local Time	Lap	Seg.1	Seg.2	Seg.3	Seg.4	Lap Time	km/h	Local Time
1		31.996	23.437	18.781	1'53.009	178,2	15:17'43.197	1		32.037	23.560	19.247	1'53.808	186,2	15:17'43.996
2	34.393	31.202	23.236	18.894	1'47.725	258,6	15:19'30.922	2	35.295	31.066	23.532	19.211	1'49.104	<b>266,9</b>	15:19'33.100
3	34.527	30.857	23.171	18.936	1'47.491	264,9	15:21'18.413	3	34.582	30.975	23.751	<b>19.060</b>	1'48.368	264,9	15:21'21.468
4	34.545	30.785	23.170	18.959	1'47.459	263,7	15:23'05.872	4	34.648	<b>30.898</b>	23.300	19.174	<b>1'48.020</b>	263,7	15:23'09.488
5	34.398	30.751	23.766	18.803	1'47.718	266,2	15:24'53.590	5	34.468	30.923	23.432	19.440	1'48.263	264,3	15:24'57.751
6	34.346	31.025	23.150	18.770	1'47.291	263,7	15:26'40.881	6	34.659	31.339	23.483	19.356	1'48.837	261,7	15:26'46.588
7	34.383	30.865	23.175	<b>18.678</b>	1'47.101	254,4	15:28'27.982	7	34.703	31.015	23.493	19.327	1'48.538	261,1	15:28'35.126
8	34.045	30.864	23.049	18.921	1'46.879	266,2	15:30'14.861	8	34.509	31.165	23.340	19.329	1'48.343	258,0	15:30'23.469
9	34.243	30.756	23.203	18.945	1'47.147	260,5	15:32'02.008	9	34.493	31.088	23.280	19.531	1'48.392	257,4	15:32'11.861
10	34.101	30.778	23.026	18.953	1'46.858	261,1	15:33'48.866	10	34.564	31.111	25.763	19.318	1'50.756	256,2	15:34'02.617
11	34.118	<b>30.641</b>	23.073	18.875	<b>1'46.707</b>	258,6	15:35'35.573	11	34.462	31.948	23.388	19.275	1'49.073	256,8	15:35'51.690
12	<b>34.028</b>	30.797	23.127	18.894	1'46.846	262,4	15:37'22.419	12	34.723	30.962	23.718	19.285	1'48.688	258,0	15:37'40.378
13	34.129	<b>30.641</b>	26.530	18.812	1'50.112	264,3	15:39'12.531	13	<b>34.404</b>	31.207	<b>23.267</b>	19.206	1'48.084	258,6	15:39'28.462
14	34.081	31.016	23.212	18.781	1'47.090	263,7	15:40'59.621	14	34.507	31.112	23.480	19.290	1'48.389	258,0	15:41'16.851
15	34.387	30.949	23.064	18.729	1'47.129	261,7	15:42'46.750	15	34.853	31.311	23.409	19.316	1'48.889	258,0	15:43'05.740
16	34.452	30.854	23.280	19.344	1'47.930	261,1	15:44'34.680	16	34.616	31.529	23.414	19.185	1'48.744	258,6	15:44'54.484
17	34.137	31.085	<b>23.019</b>	18.812	1'47.053	<b>267,6</b>	15:46'21.733	17	34.608	31.403	24.063	19.367	1'49.441	258,0	15:46'43.925
Race Time 30'31.545								Race Time 30'53.737							
22°								25°							
55 G. HENDRA PRATAMA (1'46.965)								82 P. ROMERO BARBOSA (1'48.567)							
Lap	Seg.1	Seg.2	Seg.3	Seg.4	Lap Time	km/h	Local Time	Lap	Seg.1	Seg.2	Seg.3	Seg.4	Lap Time	km/h	Local Time
1		32.253	23.540	19.098	1'53.873	186,5	15:17'44.061	1		31.814	23.589	19.093	1'54.523	188,1	15:17'44.711
2	34.510	31.000	23.303	19.029	1'47.842	266,2	15:19'31.903	2	35.104	31.258	23.402	<b>18.966</b>	1'48.730	268,2	15:19'33.441
3	34.507	30.801	23.241	18.947	1'47.496	267,6	15:21'19.399	3	34.844	<b>31.088</b>	23.561	19.074	<b>1'48.567</b>	<b>269,6</b>	15:21'22.008
4	34.210	30.794	23.223	19.054	1'47.281	264,9	15:23'06.680	4	34.823	31.282	<b>23.377</b>	19.357	1'48.839	262,4	15:23'10.847
5	34.294	30.753	23.797	19.094	1'47.938	266,2	15:24'54.618	5	34.797	32.090	23.820	19.454	1'50.161	256,2	15:25'01.008
6	34.084	30.877	23.271	19.013	1'47.245	265,6	15:26'41.863	6	35.349	31.265	23.619	19.305	1'49.538	246,8	15:26'50.546
7	34.152	30.693	23.215	18.905	<b>1'46.965</b>	265,6	15:28'28.828	7	34.857	31.183	23.674	19.315	1'49.029	248,5	15:28'39.575
8	34.116	30.950	23.296	19.004	1'47.366	265,6	15:30'16.194	8	34.781	31.234	23.470	19.500	1'48.985	255,0	15:30'28.560
9	34.156	<b>30.643</b>	23.275	19.013	1'47.087	264,9	15:32'03.281	9	35.052	31.390	23.638	19.473	1'49.553	250,3	15:32'18.113
10	34.164	30.791	23.186	19.067	1'47.208	264,9	15:33'50.489	10	34.722	31.293	23.564	19.461	1'49.040	253,2	15:34'07.153
11	34.168	30.744	<b>23.162</b>	19.189	1'47.263	263,0	15:35'37.752	11	34.732	31.437	23.643	19.317	1'49.129	252,0	15:35'56.282
12	34.476	30.906	23.245	19.215	1'47.842	266,2	15:37'25.594	12	<b>34.631</b>	31.545	23.656	19.201	1'49.033	253,8	15:37'45.315
13	<b>34.048</b>	30.858	23.495	<b>18.859</b>	1'47.260	264,3	15:39'12.854	13	34.656	31.504	23.937	19.398	1'49.495	256,2	15:39'34.810
14	34.236	30.751	23.377	18.938	1'47.302	<b>270,2</b>	15:41'00.156	14	34.777	31.335	24.009	19.490	1'49.611	252,6	15:41'24.421
15	34.304	31.090	23.212	18.955	1'47.561	264,9	15:42'47.717	15	34.883	31.554	23.878	19.431	1'49.746	253,2	15:43'14.167
16	34.276	30.877	23.350	18.980	1'47.483	266,2	15:44'35.200	16	34.774	31.543	23.926	19.427	1'49.670	253,8	15:45'03.837
17	34.166	30.924	23.163	19.178	1'47.431	268,2	15:46'22.631	17	34.976	31.711	24.005	19.544	1'50.236	253,2	15:46'54.073
Race Time 30'32.443								Race Time 31'03.885							
26°								40 U. ORRADRE (1'47.044)							
Lap	Seg.1	Seg.2	Seg.3	Seg.4	Lap Time	km/h	Local Time	Lap	Seg.1	Seg.2	Seg.3	Seg.4	Lap Time	km/h	Local Time
1								1		31.416	23.295	<b>18.941</b>	1'52.180	182,7	15:17'42.368

02/10/2021 P = Pits In/Out - C = Lap Time Cancelled

These data/results cannot be reproduced, stored and/or transmitted in whole or in part by any manner of electronic, mechanical, photocopying, recording, broadcasting or otherwise now known or herein after developed without the previous express consent by the copyright owner, except for reproduction in daily press and regular printed publications on sale to the public within 60 days of the event related to those data/results and always provided that copyright symbol appears together as follows below.

© DORNA WSBK ORGANIZATION Srl 2021





## Motul Portuguese Round, 1-3 October 2021

### Chronological Analysis Race 1

Start at 15:15'50.188

2	34.208	30.696	23.007	19.156	1'47.067	<b>270,2</b>	15:19'29.435
3	37.789	35.167	24.211	38.740	2'15.907P	<b>270,2</b>	15:21'45.342
4	4'12.751	31.348	23.400	19.645	5'27.144P		15:27'12.486
5	34.385	31.089	23.305	19.556	1'48.335	256,8	15:29'00.821
6	34.156	30.918	<b>22.988</b>	19.450	1'47.512	257,4	15:30'48.333
7	34.217	30.679	23.281	19.439	1'47.616	257,4	15:32'35.949
8	34.156	30.667	23.173	19.519	1'47.515	258,0	15:34'23.464
9	34.175	30.817	23.138	19.462	1'47.592	259,2	15:36'11.056
10	<b>33.838</b>	30.868	23.387	19.452	1'47.545	260,5	15:37'58.601
11	34.092	30.829	23.135	19.374	1'47.430	261,1	15:39'46.031
12	34.194	30.762	23.076	19.428	1'47.460	260,5	15:41'33.491
13	34.100	30.737	23.126	19.394	1'47.357	263,0	15:43'20.848
14	34.021	30.728	23.081	19.357	1'47.187	261,7	15:45'08.035
15	33.948	<b>30.659</b>	23.053	19.384	<b>1'47.044</b>	261,7	15:46'55.079

Race Time 31'04.891

RET 28 G. VAN STRAALEN (1'45.725)							
Lap	Seg.1	Seg.2	Seg.3	Seg.4	Lap Time	km/h	Local Time
1		30.914	23.069	18.884	1'50.084	171,2	15:17'40.272
2	34.536	30.696	22.834	<b>18.822</b>	1'46.888	264,3	15:19'27.160
3	34.382	30.407	22.969	18.962	1'46.720	264,9	15:21'13.880
4	34.436	30.167	22.843	18.883	1'46.329	263,7	15:23'00.209
5	33.931	30.277	22.905	18.963	1'46.076	267,6	15:24'46.285
6	<b>33.872</b>	<b>30.089</b>	<b>22.663</b>	19.101	<b>1'45.725</b>	<b>270,2</b>	15:26'32.010
7	33.980	30.448	22.912	18.945	1'46.285	259,9	15:28'18.295
8	34.024	30.568	22.826	19.144	1'46.562	258,6	15:30'04.857
9	34.241	30.395	22.854	18.995	1'46.485	258,0	15:31'51.342
10	34.265	30.460	22.931	19.082	1'46.738	268,2	15:33'38.080
11	34.106	30.151	22.971	18.927	1'46.155	263,7	15:35'24.235
12	34.023	30.561	23.184	19.001	1'46.769	266,9	15:37'11.004
13	34.048	30.470	22.938	19.031	1'46.487	265,6	15:38'57.491
14	33.956	30.379	22.850	19.005	1'46.190	263,0	15:40'43.681

Race Time 24'53.493

RET 96 D. SANCHIS MARTINEZ (1'46.580)							
Lap	Seg.1	Seg.2	Seg.3	Seg.4	Lap Time	km/h	Local Time
1		32.040	23.319	19.067	1'52.897	180,9	15:17'43.085
2	34.044	30.680	22.902	18.954	<b>1'46.580</b>	<b>277,8</b>	15:19'29.665
3	34.192	30.737	<b>22.885</b>	<b>18.915</b>	1'46.729	266,2	15:21'16.394
4	34.151	<b>30.662</b>	22.959	18.936	1'46.708	267,6	15:23'03.102
5	<b>34.013</b>	1'24.549	35.319	44.658	3'18.539P	267,6	15:26'21.641

Race Time 10'31.453

RET 34 K. MANFREDI (1'46.388)							
Lap	Seg.1	Seg.2	Seg.3	Seg.4	Lap Time	km/h	Local Time
1		32.292	23.014	19.074	1'51.835	174,8	15:17'42.023
2	34.272	30.517	22.834	<b>18.867</b>	1'46.490	263,7	15:19'28.513
3	<b>33.830</b>	31.399	<b>22.778</b>	18.960	1'46.967	<b>270,2</b>	15:21'15.480
4	34.436	<b>30.254</b>	22.790	18.908	<b>1'46.388</b>	261,7	15:23'01.868

Race Time 7'11.680

RET 69 E. MONTERO HUERTA (1'49.623)							
Lap	Seg.1	Seg.2	Seg.3	Seg.4	Lap Time	km/h	Local Time
1		32.619	<b>23.651</b>	<b>19.343</b>	1'55.016	184,9	15:17'45.204
2	34.897	31.371	23.920	19.435	<b>1'49.623</b>	<b>265,6</b>	15:19'34.827

Race Time 3'44.639

02/10/2021 P = Pits In/Out - C = Lap Time Cancelled

These data/results cannot be reproduced, stored and/or transmitted in whole or in part by any manner of electronic, mechanical, photocopying, recording, broadcasting or otherwise now known or herein after developed without the previous express consent by the copyright owner, except for reproduction in daily press and regular printed publications on sale to the public within 60 days of the event related to those data/results and always provided that copyright symbol appears together as follows below.

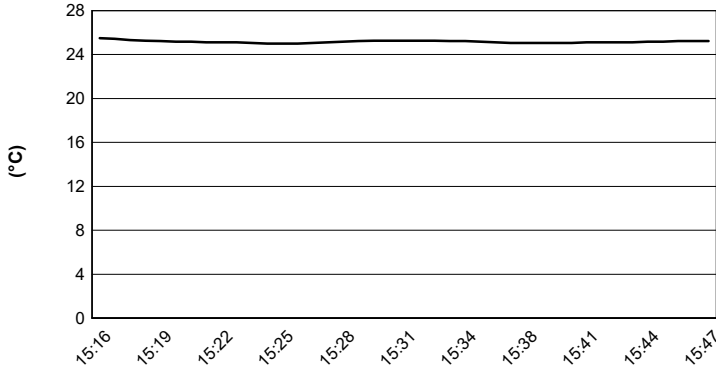
© DORNA WSBK ORGANIZATION Srl 2021

## Motul Portuguese Round, 1-3 October 2021

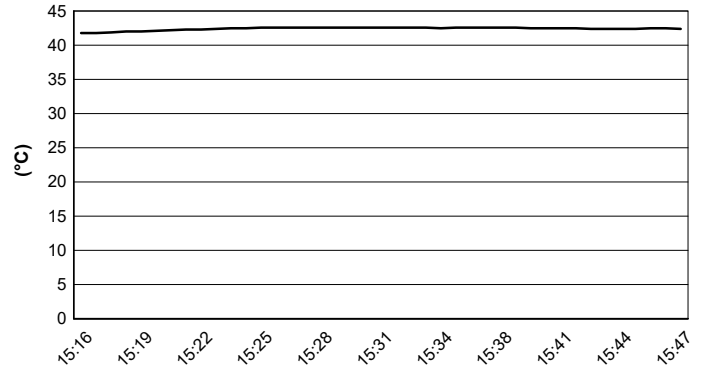
### Weather Report Race 1

Session started 15:16 - Session ended 15:47

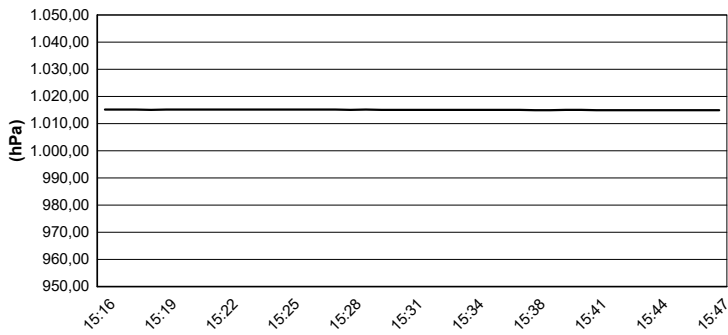
#### Air Temperature



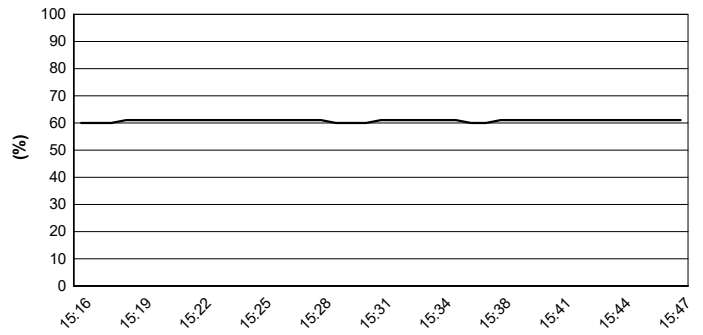
#### Track Temperature



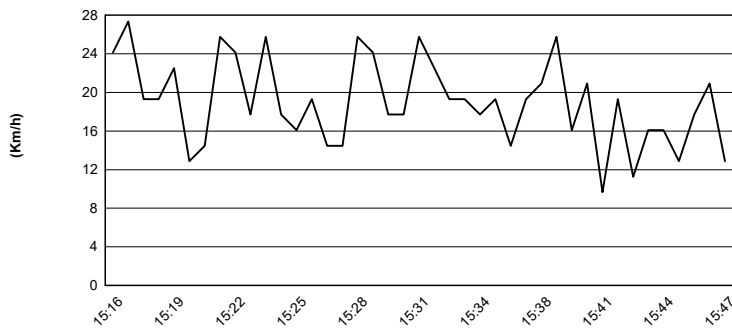
#### Air Pressure



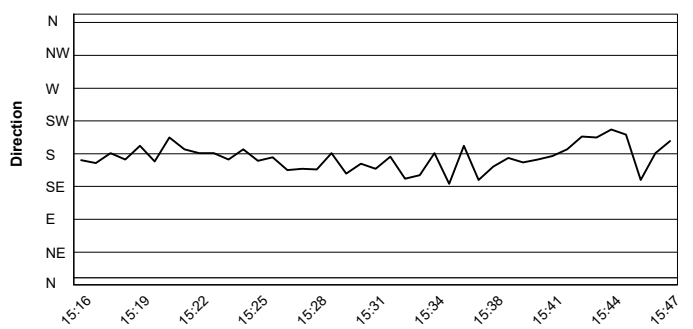
#### Humidity



#### Wind Speed



#### Wind Direction

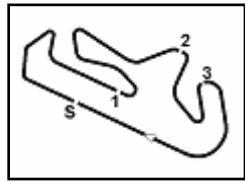


02/10/2021

These data/results cannot be reproduced, stored and/or transmitted in whole or in part by any manner of electronic, mechanical, photocopying, recording, broadcasting or otherwise now known or herein after developed without the previous express consent by the copyright owner, except for reproduction in daily press and regular printed publications on sale to the public within 60 days of the event related to those data/results and always provided that copyright symbol appears together as follows below.

© DORNA WSBK ORGANIZATION Srl 2021





Portimao 4.592 m

## Motul Portuguese Round, 1-3 October 2021 Manufacturers Standings

Points	Points From First	Points From Previous	May 23		May 30		June 13		July 25		August 8		August 22		September 5		September 19		September 26		October 3		October 17		November 21	
			ARAGON	ARAGON	ESTORIL	ESTORIL	MISANO	MISANO	ASSEN	ASSEN	MOST	MOST	NAVARRA	NAVARRA	MAGNY-COURS	MAGNY-COURS	BARCELONA	BARCELONA	JEREZ	JEREZ	PORTIMAO	PORTIMAO	VILLICUM	VILLICUM	MANDALIKA	MANDALIKA
1	YAMAHA	450	25 1	25 1	25 1	25 1	25 1	25 1	25 1	25 1	25 1	25 1	25 1	25 1	25 1	25 1	25 1	25 1	25 1	25 1						
2	KAWASAKI	270	180	16 2	20 2	20 2	16 2	10 2	10 2	16 2	20 2	16 2	13 2	9 2	10 2	9 2	16 2	16 2	20 2	20 2	13 2					
3	MV AGUSTA	112	338	158		5 3	8 3	7 3	8 3	7 3	8 3	6 3	9 3	11 3	11 3	16 3	16 3	16 3	11 3							
4	SUZUKI	3	447	109						3 4	4 4	4 4	4 4	4 4	4 4	4 4	4 4	4 4	4 4							

02/10/2021 First Line: Championship Standings - Second Line: Ranking Progression

These data/results cannot be reproduced, stored and/or transmitted in whole or in part by any manner of electronic, mechanical, photocopying, recording, broadcasting or otherwise now known or herein after developed without the previous express consent by the copyright owner, except for reproduction in daily press and regular printed publications on sale to the public within 60 days of the event related to those data/results and always provided that copyright symbol appears together as follows below.

© DORNA WSBK ORGANIZATION Srl 2021

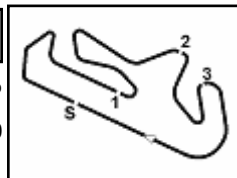
FIAT PERUGIA TIMING



Official Tyre Supplier



Official Timekeeper



## Motul Portuguese Round, 1-3 October 2021

### Best Lap & Speed

No.	Rider Bike	Nat	Best Lap		FP1		FP2		SP		RC1							
			LL	SPD	LL	SPD	LL	SPD	LL	SPD	LL	SPD						
1	16 J. CLUZEL Yamaha YZF R6	FRA	<b>1'43.908</b>	68 277,1	1'44.358	22 <b>277,1</b>	1'44.497	20 267,5	<b>1'43.908</b>	9 272,2	1'44.783	17 268,2						
2	77 D. AEGERTER Yamaha YZF R6	SUI	<b>1'43.926</b>	64 277,1	1'45.125	20 <b>277,1</b>	1'44.593	19 270,9	<b>1'43.926</b>	8 266,9	1'44.935	17 274,3						
3	66 N. TUULI MV Agusta F3 675	FIN	<b>1'43.954</b>	48 275,7	1'46.247	5 <b>275,7</b>	1'44.821	19 261,1	<b>1'43.954</b>	7 264,2	1'44.822	17 270,2						
4	81 M. GONZALEZ Yamaha YZF R6	ESP	<b>1'44.033</b>	60 277,1	1'44.188	18 <b>277,1</b>	1'44.972	17 270,9	<b>1'44.033</b>	8 268,2	1'44.814	17 274,3						
5	61 C. ONCU Kawasaki ZX-6R	TUR	<b>1'44.077</b>	59 275,7	1'44.954	18 <b>275,7</b>	1'46.097	16 266,9	<b>1'44.077</b>	8 273,6	1'45.332	17 269,5						
6	3 R. DE ROSA Kawasaki ZX-6R	ITA	<b>1'44.104</b>	62 275,0	1'44.980	18 <b>275,0</b>	1'45.152	19 269,5	<b>1'44.104</b>	8 267,5	1'44.941	17 272,2						
7	4 S. ODENDAAL Yamaha YZF R6	RSA	<b>1'44.395</b>	58 276,4	1'44.618	16 <b>276,4</b>	1'45.268	17 272,2	<b>1'44.395</b>	8 272,2	1'44.942	17 272,9						
8	94 F. CARICASULO Yamaha YZF R6	ITA	<b>1'44.432</b>	65 276,4	1'44.529	21 <b>276,4</b>	1'45.176	18 273,6	<b>1'44.432</b>	9 275,0	1'45.511	17 275,7						
9	5 P. OETTL Kawasaki ZX-6R	GER	<b>1'44.458</b>	63 279,2	1'44.956	20 <b>279,2</b>	1'45.198	18 272,9	<b>1'44.458</b>	8 272,2	1'45.541	17 276,4						
10	91 Y. MONTELLA Yamaha YZF R6	ITA	<b>1'44.650</b>	67 276,4	1'45.240	21 <b>276,4</b>	1'45.498	19 266,9	<b>1'44.650</b>	10 268,2	1'45.575	17 273,6						
11	28 G. VAN STRAALLEN Yamaha YZF R6	NED	<b>1'44.667</b>	62 280,0	1'46.058	20 <b>280,0</b>	1'45.849	19 266,2	<b>1'44.667</b>	9 265,5	1'45.725	14 270,2						
12	52 P. HOBELSBERGER Yamaha YZF R6	GER	<b>1'44.732</b>	57 275,0	1'45.874	16 <b>275,0</b>	1'45.381	15 267,5	<b>1'44.732</b>	9 272,9	1'45.607	17 273,6						
13	21 R. KRUMMENACHER Yamaha YZF R6	SUI	<b>1'44.890</b>	30 274,3	1'45.707	2 <b>274,3</b>	1'45.238	9 266,9	<b>1'44.890</b>	2 271,5	1'45.152	17 270,9						
14	34 K. MANFREDI Yamaha YZF R6	ITA	<b>1'44.925</b>	45 277,1	1'46.096	19 <b>277,1</b>	1'46.539	14 264,9	<b>1'44.925</b>	8 264,9	1'46.388	4 270,2						
15	38 H. SOOMER Yamaha YZF R6	EST	<b>1'44.975</b>	56 277,8	1'46.100	17 <b>277,8</b>	1'46.313	13 265,5	<b>1'44.975</b>	9 270,2	1'45.978	17 272,9						
16	56 P. SEBESTYEN Yamaha YZF R6	HUN	<b>1'45.063</b>	57 276,4	1'45.586	18 <b>276,4</b>	1'46.053	14 273,6	<b>1'45.063</b>	8 267,5	1'45.705	17 272,2						
17	25 M. BRENNER Yamaha YZF R6	SUI	<b>1'45.246</b>	58 274,3	1'45.787	18 <b>274,3</b>	1'45.566	16 268,2	<b>1'45.246</b>	7 269,5	1'46.172	17 270,2						
18	22 F. FULIGNI Yamaha YZF R6	ITA	<b>1'45.280</b>	61 275,0	1'46.186	21 <b>275,0</b>	1'46.879	15 264,9	<b>1'45.280</b>	8 266,9	1'46.416	17 269,5						
19	50 O. VOSTATEK Yamaha YZF R6	CZE	<b>1'45.473</b>	66 278,5	1'46.459	20 <b>278,5</b>	1'46.658	20 262,3	<b>1'45.473</b>	9 272,9	1'46.267	17 271,5						
20	96 D. SANCHIS MARTINEZ Yamaha YZF R6	ESP	<b>1'45.540</b>	47 277,8	1'45.869	18 273,6	1'46.058	16 257,3	<b>1'45.540</b>	8 261,7	1'46.580	5 <b>277,8</b>						
21	40 U. ORRADRE Yamaha YZF R6	ESP	<b>1'45.567</b>	55 277,8	1'46.326	19 <b>277,8</b>	1'46.557	13 263,6	<b>1'45.567</b>	8 268,2	1'47.044	15 270,2						
22	71 C. BERGMAN Yamaha YZF R6	SWE	<b>1'45.736</b>	44 278,5	1'45.853	19 <b>278,5</b>	1'46.183	17 270,2	<b>1'45.736</b>	8 269,5								
23	24 L. TACCINI Kawasaki ZX-6R	ITA	<b>1'45.794</b>	62 275,0	1'46.341	19 <b>275,0</b>	1'46.718	18 267,5	<b>1'45.794</b>	8 269,5	1'46.461	17 270,2						
24	95 V. TAKALA Yamaha YZF R6	FIN	<b>1'45.936</b>	63 272,9	1'47.656	20 <b>272,9</b>	1'46.806	19 266,2	<b>1'45.936</b>	7 269,5	1'46.707	17 267,5						
25	55 G. HENDRA PRATAMA Yamaha YZF R6	INA	<b>1'46.495</b>	58 273,6	1'47.148	16 <b>273,6</b>	1'46.974	16 269,5	<b>1'46.495</b>	9 267,5	1'46.965	17 270,2						

02/10/2021

These data/results cannot be reproduced, stored and/or transmitted in whole or in part by any manner of electronic, mechanical, photocopying, recording, broadcasting or otherwise now known or herein after developed without the previous express consent by the copyright owner, except for reproduction in daily press and regular printed publications on sale to the public within 60 days of the event related to those data/results and always provided that copyright symbol appears together as follows below.

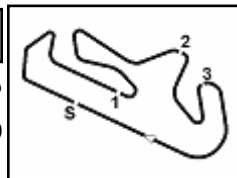
© DORNA WSBK ORGANIZATION Srl 2021

**FICR PERUGIA TIMING**


Official Tyre Supplier



Official Timekeeper



Portimao 4.592 m

**Motul Portuguese Round, 1-3 October 2021**
**Best Lap & Speed**

2 / 2

No.	Rider Bike	Nat	Best Lap		FP1		FP2		SP		RC1						
			LL	SPD	LL	SPD	LL	SPD	LL	SPD	LL	SPD					
26	<b>42 S. FROSSARD</b> Yamaha YZF R6	SUI	<b>1'46.642</b>	67 277,1	1'48.343	21 <b>277,1</b>	1'47.213	20 266,2	<b>1'46.642</b>	9 272,2	1'47.297	17 273,6					
27	<b>92 B. VAN EERDE</b> Yamaha YZF R6	AUS	<b>1'46.650</b>	56 272,2	1'48.375	19 270,9	1'48.192	12 263,0	<b>1'46.650</b>	8 265,5	1'46.777	17 <b>272,2</b>					
28	<b>6 M. HERRERA</b> Yamaha YZF R6	ESP	<b>1'46.651</b>	53 273,6	1'46.912	19 <b>273,6</b>	1'47.786	9 263,6	<b>1'46.651</b>	8 268,2	1'46.837	17 270,2					
29	<b>49 A. VIU</b> Yamaha YZF R6	ESP	<b>1'47.026</b>	36 273,6	<b>1'47.026</b>	20 <b>273,6</b>	<b>1'47.026</b>	16 262,3									
30	<b>2 L. MONTELLA</b> Yamaha YZF R6	ITA	<b>1'47.411</b>	64 272,2	1'47.782	19 <b>272,2</b>	1'47.800	19 268,2	<b>1'47.411</b>	9 268,8	1'48.020	17 266,9					
31	<b>69 E. MONTERO HUERTA</b> Yamaha YZF R6	ESP	<b>1'47.420</b>	46 269,5	1'48.873	17 <b>269,5</b>	1'49.146	18 255,5	<b>1'47.420</b>	9 258,0	1'49.623	2 265,5					
32	<b>82 P. ROMERO BARBOSA</b> Kawasaki ZX-6R	POR	<b>1'47.728</b>	56 275,0	1'49.080	19 <b>275,0</b>	1'48.749	12 259,2	<b>1'47.728</b>	8 261,1	1'48.567	17 269,5					
33	<b>45 S. KAWASAKI</b> Kawasaki ZX-6R	JPN	<b>1'47.997</b>	46 272,2	1'49.821	19 <b>272,2</b>	1'49.242	20 265,5	<b>1'47.997</b>	7 265,5							

02/10/2021

These data/results cannot be reproduced, stored and/or transmitted in whole or in part by any manner of electronic, mechanical, photocopying, recording, broadcasting or otherwise now known or herein after developed without the previous express consent by the copyright owner, except for reproduction in daily press and regular printed publications on sale to the public within 60 days of the event related to those data/results and always provided that copyright symbol appears together as follows below.

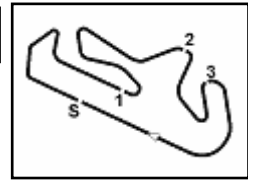
© DORNA WSBK ORGANIZATION Srl 2021

**FICR PERUGIA TIMING**


Official Tyre Supplier



Official Timekeeper



Portimao 4.592 m

## Motul Portuguese Round, 1-3 October 2021

### Pirelli Best Lap Award

	Points	Points From First	Points From Previous	May 23	May 30	June 13	July 25	August 8	August 22	September 5	September 19	September 26	October 3	October 17	November 21			
				ARAGON	ESTORIL	MISANO	ASSEN	MOST	NAVARRA	MAGNY-COURS	BARCELONA	JEREZ	PORTIMAO	VILLICUM	MANDALIKA			
<b>1 AEGERTER</b> Dominique (SUI)	7					1	1	1	1	1			1					
<b>2 GONZALEZ</b> Manuel (ESP)	3	4				1		1			1							
<b>3 DE ROSA</b> Raffaele (ITA)	2	5	1	1	1													
<b>4 TUULI</b> Niki (FIN)	2	5	0	1	1													
<b>5 CLUZEL</b> Jules (FRA)	1	6	1										1					
<b>6 ONCU</b> Can Alexander (TUR)	1	6	0									1						
<b>7 FABRIZIO</b> Michel (ITA)	1	6	0								1							
<b>8 ODENDAAL</b> Steven (RSA)	1	6	0					1										

02/10/2021 First Line: Championship Standings - Second Line: Ranking Progression  
 These data/results cannot be reproduced, stored and/or transmitted in whole or in part by any manner of electronic, mechanical, photocopying, recording, broadcasting or otherwise now known or herein after developed without the previous express consent by the copyright owner, except for reproduction in daily press and regular printed publications on sale to the public within 60 days of the event related to those data/results and always provided that copyright symbol appears together as follows below.  
 © DORNA WSBK ORGANIZATION Srl 2021

