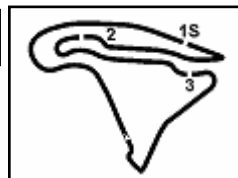


**4****Yamaha R3  
731/06**

Magny-Cours 4.411 m

**Pirelli French Round, 9–11 September 2022  
Results Superpole****1 / 2**

No.	Rider	Nat	Team	Bike	Time	Gap	Rel.	Laps	Speed	
									Avg	Max
1	<b>39 E. VALENTIM</b>	BRA	AD78 Team Brasil bLU cRU	Yamaha R3	<b>2'08.151</b>			14	123,913	<b>177,6</b>
2	<b>80 G. MANSO</b>	BRA	AD78 Team Brasil bLU cRU	Yamaha R3	<b>2'08.420</b>	0.269	0.269	14	123,654	<b>178,2</b>
3	<b>46 D. NOWAK</b>	POL	Szkopek Team	Yamaha R3	<b>2'08.595</b>	0.444	0.175	13	123,485	<b>177,6</b>
4	<b>69 A. MC DONALD</b>	AUS	ProGP Racing	Yamaha R3	<b>2'08.711</b>	0.560	0.116	14	123,374	<b>169,8</b>
5	<b>45 C. ROUGÉ</b>	FRA	Z&F Gran Prix School	Yamaha R3	<b>2'08.786</b>	0.635	0.075	13	123,302	<b>175,9</b>
6	<b>10 G. CARBONNEL</b>	FRA	Yamaha bLU cRU Motor France	Yamaha R3	<b>2'08.917</b>	0.766	0.131	13	123,177	<b>169,5</b>
7	<b>32 K. KEANKUM</b>	THA	Yamaha bLU cRU Thailand	Yamaha R3	<b>2'08.917</b>	0.766	0.000	13	123,177	<b>182,1</b>
8	<b>89 W. NUGROHO</b>	INA	bLU cRU Yamaha Racing Indonesia	Yamaha R3	<b>2'09.287</b>	1.136	0.370	11	122,824	<b>179,4</b>
9	<b>18 D. PALLADINO</b>	ITA	Team ROC n DEA	Yamaha R3	<b>2'09.295</b>	1.144	0.008	13	122,817	<b>173,1</b>
10	<b>26 K. FONTAINHA</b>	BRA	AD78 Team Brasil bLU cRU	Yamaha R3	<b>2'09.737</b>	1.586	0.442	13	122,398	<b>176,2</b>
11	<b>25 T. HORN</b>	USA	American Racing Academy	Yamaha R3	<b>2'09.863</b>	1.712	0.126	13	122,280	<b>176,2</b>
12	<b>13 D. BERGAMINI</b>	ITA	Soradis Yamaha MotoXracing	Yamaha R3	<b>2'10.051</b>	1.900	0.188	12	122,103	<b>173,1</b>
13	<b>55 B. CROCKFORD</b>	GBR	Crescent Yamaha	Yamaha R3	<b>2'10.685</b>	2.534	0.634	12	121,511	<b>177,3</b>
14	<b>47 J. KUSMIERCZYK</b>	POL	Szkopek Team	Yamaha R3	<b>2'10.785</b>	2.634	0.100	13	121,418	<b>177,9</b>
15	<b>62 F. JURÁNEK</b>	CZE	Movisio Racing	Yamaha R3	<b>2'11.544</b>	3.393	0.759	13	120,717	<b>176,8</b>
16	<b>12 J. PEDEMONTE</b>	FRA	Yamaha bLU cRU Motor France	Yamaha R3	<b>2'11.858</b>	3.707	0.314	8	120,430	<b>171,4</b>
17	<b>88 E. BURR</b>	BRA	AD78 Team Brasil bLU cRU	Yamaha R3	<b>2'11.880</b>	3.729	0.022	13	120,409	<b>173,4</b>
18	<b>42 C. GIMENEZ</b>	ESP	ARCO MotoR University Team	Yamaha R3	<b>2'12.049</b>	3.898	0.169	13	120,255	<b>167,7</b>
19	<b>77 M. ABDALAZIZ BINLADIN</b>	UAE	AB Racing Team UAE	Yamaha R3	<b>2'14.402</b>	6.251	2.353	7	118,150	<b>170,6</b>
20	<b>56 V. GELLY</b>	FRA	VAL56 Speed Racing	Yamaha R3	<b>2'15.492</b>	7.341	1.090	8	117,200	<b>175,0</b>
21	<b>99 M. VIKINGASKOLD</b>	SWE	Yamaha bLU cRU Scandinavia	Yamaha R3	<b>2'15.552</b>	7.401	0.060	13	117,148	<b>170,3</b>

**Qualifying Lap Time [115% of 2'08.151]: 2'27.374**

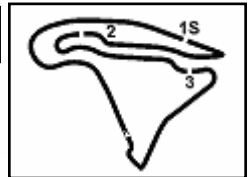
AIR	Humidity:	66%	Temp:	20°C
TRACK	Condition:	Wet	Temp:	24°C

Records	Pole	(SP)	2021	I.Garcia Abella	1'58.647	133,840	Km/h
	Race	(RC1)	2021	G.Carbonnel	1'58.104	134,450	Km/h
	All Times	(RC1)	2021	G.Carbonnel	1'58.104	134,450	Km/h

Start                      End                      The results are provisional until the end of the time limit for protests and appeals  
09/09/2022              13:30                      14:03                      and the completion of the technical checks.

These data/results cannot be reproduced, stored and/or transmitted in whole or in part by any manner of electronic, mechanical, photocopying, recording, broadcasting or otherwise now known or herein after developed without the previous express consent by the copyright owner, except for reproduction in daily press and regular printed publications on sale to the public within 60 days of the event related to those data/results and always provided that copyright symbol appears together as follows below.

© DORNA WSBK ORGANIZATION Srl 2022

**4****Yamaha R3  
731/06**

Magny-Cours 4.411 m

2 / 2

# Pirelli French Round, 9–11 September 2022

## Results Superpole

### Session Highlights

Local Time	No. Rider	Description
13.30.00		Start
13.31.42	<b>69</b> A. <b>MC DONALD</b>	Current Lap Cancelled - Exceeded Track Limits - Turn 6
13.33.08	<b>89</b> W. <b>NUGROHO</b>	Crashed - Turn 13
13.35.34	<b>12</b> J. <b>PEDEMONTE</b>	Crashed - Turn 17
13.44.19	<b>10</b> G. <b>CARBONNEL</b>	Lap Cancelled [2'25.585] - Yellow Flag - Turn 17
13.44.29	<b>62</b> F. <b>JURÁNEK</b>	Lap Cancelled [2'24.626] - Yellow Flag - Turn 17
13.44.35	<b>89</b> W. <b>NUGROHO</b>	Crashed - Turn 13
13.45.00	<b>89</b> W. <b>NUGROHO</b>	Re-joined
13.46.14	<b>45</b> C. <b>ROUGÉ</b>	Current Lap Cancelled - Exceeded Track Limits - Turn 11
13.46.19	<b>56</b> V. <b>GELLY</b>	Crashed - Turn 9
13.46.32	<b>77</b> M. <b>ABDALAZIZ BINLADIN</b>	Crashed - Turn 13
13.47.04	<b>77</b> M. <b>ABDALAZIZ BINLADIN</b>	Re-joined
13.50.59	<b>42</b> C. <b>GIMENEZ</b>	Current Lap Cancelled - Exceeded Track Limits - Turn 11
13.54.42	<b>46</b> D. <b>NOWAK</b>	Current Lap Cancelled - Exceeded Track Limits - Turn 6
14.02.42	<b>46</b> D. <b>NOWAK</b>	Lap Cancelled [2'09.781] - Exceeded Track Limits - Turn 17
14.03.32		End Of Session

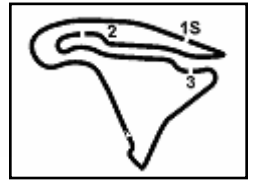
### Fastest Laps Sequence

No.	Rider	Nat	Team	Bike	Local Time	Time	Gap	Avg
<b>69</b>	A. <b>MC DONALD</b>	AUS	ProGP Racing	Yamaha R3	13:35'12.757	<b>2'18.847</b>		114,368
<b>69</b>	A. <b>MC DONALD</b>	AUS	ProGP Racing	Yamaha R3	13:37'28.816	<b>2'16.059</b>	-2.788	116,711
<b>69</b>	A. <b>MC DONALD</b>	AUS	ProGP Racing	Yamaha R3	13:39'42.453	<b>2'13.637</b>	-2.422	118,826
<b>69</b>	A. <b>MC DONALD</b>	AUS	ProGP Racing	Yamaha R3	13:44'10.452	<b>2'13.572</b>	-0.065	118,884
<b>69</b>	A. <b>MC DONALD</b>	AUS	ProGP Racing	Yamaha R3	13:46'23.000	<b>2'12.548</b>	-1.024	119,803
<b>69</b>	A. <b>MC DONALD</b>	AUS	ProGP Racing	Yamaha R3	13:48'35.166	<b>2'12.166</b>	-0.382	120,149
<b>69</b>	A. <b>MC DONALD</b>	AUS	ProGP Racing	Yamaha R3	13:50'46.724	<b>2'11.558</b>	-0.608	120,704
<b>39</b>	E. <b>VALENTIM</b>	BRA	AD78 Team Brasil bLU cRU	Yamaha R3	13:51'16.181	<b>2'11.546</b>	-0.012	120,715
<b>80</b>	G. <b>MANSO</b>	BRA	AD78 Team Brasil bLU cRU	Yamaha R3	13:51'17.372	<b>2'11.470</b>	-0.076	120,785
<b>26</b>	K. <b>FONTAINHA</b>	BRA	AD78 Team Brasil bLU cRU	Yamaha R3	13:51'19.048	<b>2'11.444</b>	-0.026	120,809
<b>69</b>	A. <b>MC DONALD</b>	AUS	ProGP Racing	Yamaha R3	13:52'57.648	<b>2'10.924</b>	-0.520	121,289
<b>69</b>	A. <b>MC DONALD</b>	AUS	ProGP Racing	Yamaha R3	13:55'07.851	<b>2'10.203</b>	-0.721	121,960
<b>69</b>	A. <b>MC DONALD</b>	AUS	ProGP Racing	Yamaha R3	13:57'17.632	<b>2'09.781</b>	-0.422	122,357
<b>45</b>	C. <b>ROUGÉ</b>	FRA	Z&F Gran Prix School	Yamaha R3	13:57'57.513	<b>2'09.606</b>	-0.175	122,522
<b>39</b>	E. <b>VALENTIM</b>	BRA	AD78 Team Brasil bLU cRU	Yamaha R3	13:59'58.907	<b>2'08.957</b>	-0.649	123,139
<b>80</b>	G. <b>MANSO</b>	BRA	AD78 Team Brasil bLU cRU	Yamaha R3	13:59'59.135	<b>2'08.420</b>	-0.537	123,654
<b>39</b>	E. <b>VALENTIM</b>	BRA	AD78 Team Brasil bLU cRU	Yamaha R3	14:02'07.058	<b>2'08.151</b>	-0.269	123,913

Start 09/09/2022 13:30 End 14:03 The results are provisional until the end of the time limit for protests and appeals and the completion of the technical checks.

These data/results cannot be reproduced, stored and/or transmitted in whole or in part by any manner of electronic, mechanical, photocopying, recording, broadcasting or otherwise now known or herein after developed without the previous express consent by the copyright owner, except for reproduction in daily press and regular printed publications on sale to the public within 60 days of the event related to those data/results and always provided that copyright symbol appears together as follows below.

© DORNA WSBK ORGANIZATION Srl 2022

**5****Yamaha R3  
731/06**

Magny-Cours 4.411 m

**Pirelli French Round, 9–11 September 2022  
Starting Grid - Race 1 [9 Laps x 4,411 km = 39,699 km]**

3	<b>46 NOWAK D.</b> Yamaha 2'08.595	2	<b>80 MANSO G.</b> Yamaha 2'08.420	1	<b>39 VALENTIM E.</b> Yamaha 2'08.151	<b>1</b>
6	<b>10 CARBONNEL G.</b> Yamaha 2'08.917	5	<b>45 ROUGÉ C.</b> Yamaha 2'08.786	4	<b>69 MC DONALD A.</b> Yamaha 2'08.711	<b>2</b>
9	<b>18 PALLADINO D.</b> Yamaha 2'09.295	8	<b>89 NUGROHO W.</b> Yamaha 2'09.287	7	<b>32 KEANKUM K.</b> Yamaha 2'08.917	<b>3</b>
12	<b>13 BERGAMINI D.</b> Yamaha 2'10.051	11	<b>25 HORN T.</b> Yamaha 2'09.863	10	<b>26 FONTAINHA K.</b> Yamaha 2'09.737	<b>4</b>
15	<b>62 JURÁNEK F.</b> Yamaha 2'11.544	14	<b>47 KUSMIERCZYK J.</b> Yamaha 2'10.785	13	<b>55 CROCKFORD B.</b> Yamaha 2'10.685	<b>5</b>
18	<b>42 GIMENEZ C.</b> Yamaha 2'12.049	17	<b>88 BURR E.</b> Yamaha 2'11.880	16	<b>12 PEDEMONTE J.</b> Yamaha 2'11.858	<b>6</b>
21	<b>99 VIKINGASKOLD M.</b> Yamaha 2'15.552	20	<b>56 GELLY V.</b> Yamaha 2'15.492	19	<b>77 ABDALAZIZ BINLAD</b> Yamaha 2'14.402	<b>7</b>

N.37 (Pizzoli A.) will not take part in the race. Declared unfit after FP

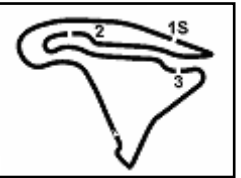
09/09/2022 The Race Director .....

These data/results cannot be reproduced, stored and/or transmitted in whole or in part by any manner of electronic, mechanical, photocopying, recording, broadcasting or otherwise now known or herein after developed without the previous express consent by the copyright owner, except for reproduction in daily press and regular printed publications on sale to the public within 60 days of the event related to those data/results and always provided that copyright symbol appears together as follows below. © DORNA WSBK ORGANIZATION Srl 2022

**PERUGIA TIMING**



6.1

Yamaha R3  
731/06

Magny-Cours 4.411 m

## Pirelli French Round, 9-11 September 2022

### Best Sector & Speed Superpole

BEST LAP		
1	39 E. VALENTIM	Yamaha R3 2'08.151
2	80 G. MANSO	Yamaha R3 2'08.420
3	46 D. NOWAK	Yamaha R3 2'08.595
4	69 A. MC DONALD	Yamaha R3 2'08.711
5	45 C. ROUGÉ	Yamaha R3 2'08.786
6	10 G. CARBONNEL	Yamaha R3 2'08.917
7	32 K. KEANKUM	Yamaha R3 2'08.917
8	89 W. NUGROHO	Yamaha R3 2'09.287
9	18 D. PALLADINO	Yamaha R3 2'09.295
10	26 K. FONTAINHA	Yamaha R3 2'09.737
11	25 T. HORN	Yamaha R3 2'09.863
12	13 D. BERGAMINI	Yamaha R3 2'10.051
13	55 B. CROCKFORD	Yamaha R3 2'10.685
14	47 J. KUSMIERCZYK	Yamaha R3 2'10.785
15	62 F. JURÁNEK	Yamaha R3 2'11.544
16	12 J. PEDEMONTE	Yamaha R3 2'11.858
17	88 E. BURR	Yamaha R3 2'11.880
18	42 C. GIMENEZ	Yamaha R3 2'12.049
19	77 M. ABDALAZIZ BINLADIN	Yamaha R3 2'14.402
20	56 V. GELLY	Yamaha R3 2'15.492
21	99 M. VIKINGASKOLD	Yamaha R3 2'15.552

SPEED		
1	32 K. KEANKUM	Yamaha R3 182,1
2	89 W. NUGROHO	Yamaha R3 179,4
3	80 G. MANSO	Yamaha R3 178,2
4	47 J. KUSMIERCZYK	Yamaha R3 177,9
5	39 E. VALENTIM	Yamaha R3 177,6
6	46 D. NOWAK	Yamaha R3 177,6
7	55 B. CROCKFORD	Yamaha R3 177,3
8	62 F. JURÁNEK	Yamaha R3 176,8
9	25 T. HORN	Yamaha R3 176,2
10	26 K. FONTAINHA	Yamaha R3 176,2
11	45 C. ROUGÉ	Yamaha R3 175,9
12	56 V. GELLY	Yamaha R3 175,0
13	88 E. BURR	Yamaha R3 173,4
14	13 D. BERGAMINI	Yamaha R3 173,1
15	18 D. PALLADINO	Yamaha R3 173,1
16	12 J. PEDEMONTE	Yamaha R3 171,4
17	77 M. ABDALAZIZ BINLADIN	Yamaha R3 170,6
18	99 M. VIKINGASKOLD	Yamaha R3 170,3
19	69 A. MC DONALD	Yamaha R3 169,8
20	10 G. CARBONNEL	Yamaha R3 169,5
21	42 C. GIMENEZ	Yamaha R3 167,7

SEG. 1		SEG. 2		SEG. 3		SEG. 4	
1	39 E. VALENTIM 39.391	1	69 A. MC DONALD 27.882	1	39 E. VALENTIM 28.274	1	10 G. CARBONNEL 31.797
2	89 W. NUGROHO 39.534	2	39 E. VALENTIM 28.120	2	80 G. MANSO 28.372	2	69 A. MC DONALD 32.029
3	80 G. MANSO 39.598	3	10 G. CARBONNEL 28.160	3	46 D. NOWAK 28.448	3	45 C. ROUGÉ 32.037
4	46 D. NOWAK 39.633	4	80 G. MANSO 28.256	4	18 D. PALLADINO 28.476	4	80 G. MANSO 32.045
5	45 C. ROUGÉ 39.717	5	46 D. NOWAK 28.305	5	69 A. MC DONALD 28.512	5	32 K. KEANKUM 32.074
6	32 K. KEANKUM 39.794	6	18 D. PALLADINO 28.376	6	25 T. HORN 28.521	6	26 K. FONTAINHA 32.119
7	25 T. HORN 40.037	7	45 C. ROUGÉ 28.382	7	32 K. KEANKUM 28.630	7	46 D. NOWAK 32.127
8	18 D. PALLADINO 40.048	8	32 K. KEANKUM 28.410	8	45 C. ROUGÉ 28.650	8	89 W. NUGROHO 32.187
9	10 G. CARBONNEL 40.131	9	26 K. FONTAINHA 28.437	9	26 K. FONTAINHA 28.776	9	62 F. JURÁNEK 32.223
10	55 B. CROCKFORD 40.161	10	13 D. BERGAMINI 28.487	10	89 W. NUGROHO 28.797	10	39 E. VALENTIM 32.254
11	26 K. FONTAINHA 40.258	11	88 E. BURR 28.513	11	10 G. CARBONNEL 28.829	11	13 D. BERGAMINI 32.267
12	47 J. KUSMIERCZYK 40.264	12	25 T. HORN 28.514	12	13 D. BERGAMINI 28.838	12	18 D. PALLADINO 32.395
13	69 A. MC DONALD 40.269	13	89 W. NUGROHO 28.707	13	62 F. JURÁNEK 28.956	13	55 B. CROCKFORD 32.527
14	88 E. BURR 40.335	14	47 J. KUSMIERCZYK 28.781	14	47 J. KUSMIERCZYK 28.990	14	25 T. HORN 32.651
15	13 D. BERGAMINI 40.459	15	12 J. PEDEMONTE 28.815	15	42 C. GIMENEZ 29.057	15	77 M. ABDALAZIZ BINLAD 32.733
16	62 F. JURÁNEK 40.582	16	55 B. CROCKFORD 28.825	16	12 J. PEDEMONTE 29.101	16	47 J. KUSMIERCZYK 32.750
17	12 J. PEDEMONTE 40.843	17	42 C. GIMENEZ 28.866	17	55 B. CROCKFORD 29.172	17	42 C. GIMENEZ 32.799
18	42 C. GIMENEZ 41.017	18	77 M. ABDALAZIZ BINLAD 29.059	18	88 E. BURR 29.201	18	12 J. PEDEMONTE 33.010
19	99 M. VIKINGASKOLD 41.335	19	62 F. JURÁNEK 29.304	19	77 M. ABDALAZIZ BINLAD 29.738	19	88 E. BURR 33.118
20	77 M. ABDALAZIZ BINLAD 41.369	20	56 V. GELLY 29.379	20	56 V. GELLY 30.271	20	56 V. GELLY 33.538
21	56 V. GELLY 41.689	21	99 M. VIKINGASKOLD 29.887	21	99 M. VIKINGASKOLD 30.365	21	99 M. VIKINGASKOLD 33.760

09/09/2022

These data/results cannot be reproduced, stored and/or transmitted in whole or in part by any manner of electronic, mechanical, photocopying, recording, broadcasting or otherwise now known or herein after developed without the previous express consent by the copyright owner, except for reproduction in daily press and regular printed publications on sale to the public within 60 days of the event related to those data/results and always provided that copyright symbol appears together as follows below.

© DORNA WSBK ORGANIZATION Srl 2022

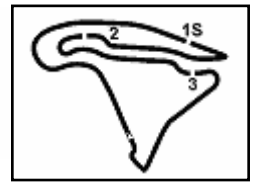
PERUGIA TIMING



6.3

Yamaha R3

731/06



Magny-Cours 4.411 m

1 / 3

## Pirelli French Round, 9-11 September 2022

### Chronological Analysis Superpole

1° 39 E. VALENTIM (2'08.151)							
Lap	Seg.1	Seg.2	Seg.3	Seg.4	Lap Time	km/h	Local Time
1							13:30'01.797
2	1'17.706	35.254	34.179	37.602	3'04.741P	139,0	13:33'06.538
3	44.551	31.915	32.239	35.846	2'24.551	167,4	13:35'31.089
4	42.829	30.598	31.084	34.524	2'19.035	172,2	13:37'50.124
5	41.932	30.599	30.522	34.380	2'17.433	177,6	13:40'07.557
6	41.456	29.634	30.124	33.847	2'15.061	177,0	13:42'22.618
7	41.139	29.445	29.938	33.627	2'14.149	175,3	13:44'36.767
8	41.273	29.375	29.842	33.762	2'14.252	173,1	13:46'51.019
9	41.161	29.086	29.866	33.503	2'13.616	168,5	13:49'04.635
10	40.415	28.744	29.424	32.963	2'11.546	176,2	13:51'16.181
11	41.392	29.187	29.330	33.210	2'13.119	144,6	13:53'29.300
12	40.171	28.669	29.032	32.727	2'10.599	170,3	13:55'39.899
13	39.955	28.507	28.924	32.665	2'10.051	170,6	13:57'49.590
14	39.996	28.281	28.426	32.254	2'08.957	170,6	13:59'58.907
15	39.391	28.120	28.274	32.366	2'08.151	173,4	14:02'07.058

2° 80 G. MANSO (2'08.420)							
Lap	Seg.1	Seg.2	Seg.3	Seg.4	Lap Time	km/h	Local Time
1							13:30'07.918
2	1'16.942	34.247	34.031	36.355	3'01.575P	162,4	13:33'09.493
3	43.463	31.052	31.595	34.392	2'20.502	170,1	13:35'29.995
4	42.926	30.368	31.117	34.788	2'19.199	170,1	13:37'49.194
5	42.741	30.433	30.621	33.600	2'17.395	175,0	13:40'06.589
6	41.537	29.548	29.755	33.287	2'14.127	171,4	13:42'20.716
7	41.362	30.221	29.939	33.756	2'15.278	168,2	13:44'35.994
8	40.764	29.194	29.628	32.984	2'12.570	171,4	13:46'48.564
9	41.902	29.470	30.672	35.294	2'17.338	162,4	13:49'05.902
10	40.579	29.050	29.273	32.568	2'11.470	173,1	13:51'17.372
11	40.370	28.628	29.415	32.886	2'11.299	173,6	13:53'28.671
12	40.894	28.936	29.315	32.799	2'11.944	165,1	13:55'40.615
13	40.152	28.835	28.675	32.438	2'10.100	171,7	13:57'50.715
14	39.747	28.256	28.372	32.045	2'08.420	175,6	13:59'59.135
15	39.598	28.971	28.580	33.657	2'10.806	178,2	14:02'09.941

3° 46 D. NOWAK (2'08.595)							
Lap	Seg.1	Seg.2	Seg.3	Seg.4	Lap Time	km/h	Local Time
1							13:29'58.811
2	1'17.993	33.799	34.948	37.260	3'04.000P	159,3	13:33'02.811
3	44.655	31.181	32.356	35.444	2'23.636	171,2	13:35'26.447
4	43.569	31.603	31.512	35.607	2'22.291	168,8	13:37'48.738
5	42.883	30.304	30.946	34.734	2'18.867	168,0	13:40'07.605
6	41.504	29.779	30.423	34.603	2'16.309	175,6	13:42'23.914
7	41.321	29.946	30.171	34.225	2'15.663	172,8	13:44'39.577
8	41.215	29.081	30.013	34.194	2'14.503	175,6	13:46'54.080
9	41.104	29.561	29.623	34.174	2'14.462	175,6	13:49'08.542
10	40.972	29.023	29.838	35.849	2'15.682	173,6	13:51'24.224
11	40.171	28.737	29.591	33.549	2'12.048	177,6	13:53'36.272
12	40.595	29.576	29.125	32.975	2'12.271C	173,1	13:55'48.543
13	39.633	28.531	28.837	32.780	2'09.781C	176,8	13:57'58.324
14	39.715	28.305	28.448	32.127	2'08.595	177,6	14:00'06.919

4° 69 A. MC DONALD (2'08.711)							
Lap	Seg.1	Seg.2	Seg.3	Seg.4	Lap Time	km/h	Local Time
1							13:30'05.633
2	1'07.605	33.006	31.935	35.731	2'48.277CP	152,8	13:32'53.910
3	43.373	30.279	31.054	34.141	2'18.847	165,9	13:35'12.757
4	42.322	29.558	30.461	33.718	2'16.059	166,9	13:37'28.816
5	41.608	28.923	29.485	33.621	2'13.637	166,4	13:39'42.453
6	42.129	29.013	29.768	33.517	2'14.427	166,7	13:41'56.880
7	41.818	28.765	29.847	33.142	2'13.572	166,9	13:44'10.452
8	41.574	28.583	29.591	32.800	2'12.548	166,4	13:46'23.000

9	41.175	28.468	29.347	33.176	2'12.166	168,0	13:48'35.166
10	41.031	28.429	29.377	32.721	2'11.558	167,4	13:50'46.724
11	40.866	28.257	29.291	32.510	2'10.924	167,2	13:52'57.648
12	40.587	28.138	29.078	32.400	2'10.203	168,0	13:55'07.851
13	40.523	28.183	29.046	32.029	2'09.781	168,2	13:57'17.632
14	40.688	28.042	28.653	33.259	2'10.642	168,8	13:59'28.274
15	40.269	27.882	28.512	32.048	2'08.711	169,8	14:01'36.985

5° 45 C. ROUGÉ (2'08.786)							
Lap	Seg.1	Seg.2	Seg.3	Seg.4	Lap Time	km/h	Local Time
1							13:29'54.715
2	1'10.596	33.307	39.077	38.319	3'01.299P	162,4	13:32'56.014
3	44.290	31.296	32.198	35.370	2'23.154	169,3	13:35'19.168
4	43.495	30.312	31.508	34.722	2'20.037	169,3	13:37'39.205
5	43.938	30.996	31.650	35.878	2'22.462	162,4	13:40'01.667
6	42.140	30.157	30.669	33.921	2'16.887	171,2	13:42'18.554
7	41.496	29.311	29.888	35.747	2'16.442	168,2	13:44'34.996
8	41.393	29.327	31.089	40.647	2'22.456C	167,7	13:46'57.452
9	41.034	29.328	30.033	33.408	2'13.803	170,9	13:49'11.255
10	40.768	28.679	29.644	33.036	2'12.127	171,7	13:51'23.382
11	40.289	29.181	29.683	34.371	2'13.524	173,1	13:53'36.906
12	40.239	29.055	29.172	32.535	2'11.001	175,6	13:55'47.907
13	39.946	28.625	28.806	32.229	2'09.606	173,4	13:57'57.513
14	39.717	28.382	28.650	32.037	2'08.786	175,9	14:00'06.299

6° 10 G. CARBONNEL (2'08.917)							
Lap	Seg.1	Seg.2	Seg.3	Seg.4	Lap Time	km/h	Local Time
1							13:30'11.034
2	1'16.806	34.864	34.925	38.468	3'05.063P	158,1	13:33'16.097
3	45.742	31.384	32.882	35.577	2'25.585C	163,6	13:35'41.682
4	44.089	30.673	31.760	34.237	2'20.759	164,9	13:38'02.441
5	42.728	29.694	30.793	33.680	2'16.895	165,1	13:40'19.336
6	42.249	29.464	30.468	34.100	2'16.281	165,9	13:42'35.617
7	41.569	29.356	30.364	33.423	2'14.712	166,9	13:44'50.329
8	41.060	28.792	30.102	33.151	2'13.105	166,9	13:47'03.434
9	40.760	28.857	30.031	33.262	2'12.910	169,5	13:49'16.344
10	42.144	29.914	30.664	33.073	2'15.795	167,2	13:51'32.139
11	40.521	28.666	29.652	32.592	2'11.431	168,0	13:53'43.570
12	40.316	28.528	29.385	32.451	2'10.680	168,0	13:55'54.250
13	40.198	28.307	29.162	32.318	2'09.985	168,2	13:58'04.235
14	40.131	28.160	28.829	31.797	2'08.917	169,5	14:00'13.152

7° 32 K. KEANKUM (2'08.917)							
Lap	Seg.1	Seg.2	Seg.3	Seg.4	Lap Time	km/h	Local Time
1							13:30'11.886
2	1'17.620	34.288	33.790	36.319	3'02.017P	163,6	13:33'13.903
3	44.487	30.662	31.283	34.991	2'21.423	167,2	13:35'35.326
4	42.859	29.868	30.876	34.398	2'18.001	168,2	13:37'53.327
5	42.282	30.383	31.365	34.352	2'18.382	174,8	13:40'11.709
6	42.202	29.473	30.251	33.457	2'15.383	175,3	13:42'27.092
7	41.686	28.975	30.220	33.138	2'14.019	168,5	13:44'41.111
8	41.146	29.451	30.618	32.923	2'14.138	172,2	13:46'55.249
9	41.323	29.211	29.721	33.560	2'13.815	173,1	13:49'09.064
10	40.651	28.980	29.854	34.419	2'13.904	171,4	13:51'22.968
11	40.714	28.733	29.331	32.635	2'11.413	173,6	13:53'34.381
12	40.127	29.477	29.207	32.382	2'11.193	175,9	13:55'45.574
13	39.794	28.689	29.018	32.560	2'10.061	177,0	13:57'55.635
14	39.803	28.410	28.630	32.074	2'08.917	182,1	14:00'04.552

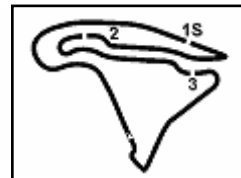
8° 89 W. NUGROHO (2'09.287)							
Lap	Seg.1	Seg.2	Seg.3	Seg.4	Lap Time	km/h	Local Time
1							13:30'13.748

09/09/2022 P = Pits In/Out - C = Lap Time Cancelled

These data/results cannot be reproduced, stored and/or transmitted in whole or in part by any manner of electronic, mechanical, photocopying, recording, broadcasting or otherwise now known or herein after developed without the previous express consent by the copyright owner, except for reproduction in daily press and regular printed publications on sale to the public within 60 days of the event related to those data/results and always provided that copyright symbol appears together as follows below.

© DORNA WSBK ORGANIZATION Srl 2022

PERUGIA TIMING

**6.3**Yamaha R3  
731/06

Magny-Cours 4.411 m

2 / 3

Pirelli French Round, 9-11 September 2022  
Chronological Analysis Superpole

2	1'15.466	35.225	32.321	58.328	3'21.340P	166,2	13:33'35.088
3	2'27.718	30.785	31.964	34.423	4'04.890P	170,1	13:37'39.978
4	42.592	30.729	31.418	33.603	2'18.342	172,0	13:39'58.320
5	41.409	29.988	30.715	33.346	2'15.458	168,2	13:42'13.778
6	41.515	32.770	30.630	1'28.424	3'13.339P	169,0	13:45'27.117
7	2'07.830	31.478	30.206	33.436	3'42.950P	169,8	13:49'10.067
8	40.527	29.100	29.814	33.540	2'12.981	176,2	13:51'23.048
9	40.384	28.846	29.367	32.977	2'11.574	173,4	13:53'34.622
10	39.832	29.140	29.240	32.497	2'10.709	175,6	13:55'45.331
11	39.847	<b>28.707</b>	29.165	32.800	2'10.519	174,5	13:57'55.850
12	<b>39.534</b>	28.769	<b>28.797</b>	<b>32.187</b>	<b>2'09.287</b>	<b>179,4</b>	14:00'05.137

9° 18 D. PALLADINO (2'09.295)							
Lap	Seg.1	Seg.2	Seg.3	Seg.4	Lap Time	km/h	Local Time
1							13:29'52.265
2	1'13.722	33.111	35.912	40.087	3'02.832P	162,7	13:32'55.097
3	45.055	30.733	32.242	34.874	2'22.904	165,6	13:35'18.001
4	43.583	30.610	31.956	34.857	2'21.006	165,9	13:37'39.007
5	43.192	30.402	31.196	33.950	2'18.740	167,7	13:39'57.747
6	42.004	30.401	30.810	33.485	2'16.700	166,7	13:42'14.447
7	41.735	29.516	30.633	34.339	2'16.223	166,7	13:44'30.670
8	41.829	30.745	31.761	34.253	2'18.588	169,0	13:46'49.258
9	40.978	29.528	30.567	33.196	2'14.269	168,8	13:49'03.527
10	41.683	29.405	30.058	33.514	2'14.660	161,4	13:51'18.187
11	40.880	29.651	30.464	33.534	2'14.529	171,2	13:53'32.716
12	41.207	29.938	29.686	32.739	2'13.570	168,5	13:55'46.286
13	40.366	28.723	28.908	32.613	2'10.610	171,7	13:57'56.896
14	<b>40.048</b>	<b>28.376</b>	<b>28.476</b>	<b>32.395</b>	<b>2'09.295</b>	<b>173,1</b>	14:00'06.191

10° 26 K. FONTAINHA (2'09.737)							
Lap	Seg.1	Seg.2	Seg.3	Seg.4	Lap Time	km/h	Local Time
1							13:30'08.079
2	1'17.052	34.108	34.220	36.593	3'01.973P	165,9	13:33'10.052
3	43.106	31.627	32.330	35.235	2'22.298	173,4	13:35'32.350
4	43.447	30.527	31.430	34.416	2'19.820	172,8	13:37'52.170
5	42.745	30.753	31.190	34.005	2'18.693	170,3	13:40'10.863
6	41.852	29.846	30.469	33.234	2'15.401	168,2	13:42'26.264
7	41.298	29.236	30.515	32.984	2'14.033	168,2	13:44'40.297
8	40.732	29.218	29.948	34.451	2'14.349	174,5	13:46'54.646
9	40.844	29.386	29.919	32.809	2'12.958	<b>176,2</b>	13:49'07.604
10	40.591	28.898	29.453	32.502	2'11.444	169,3	13:51'19.048
11	40.404	29.427	29.519	32.332	2'11.682	<b>176,2</b>	13:53'30.730
12	40.453	29.004	29.141	32.278	2'10.876	172,5	13:55'41.606
13	<b>40.258</b>	28.607	29.045	<b>32.119</b>	2'10.029	170,3	13:57'51.635
14	40.321	<b>28.437</b>	<b>28.776</b>	32.203	<b>2'09.737</b>	170,3	14:00'01.372

11° 25 T. HORN (2'09.863)							
Lap	Seg.1	Seg.2	Seg.3	Seg.4	Lap Time	km/h	Local Time
1							13:29'59.150
2	1'18.160	33.592	34.841	37.625	3'04.218P	162,9	13:33'03.368
3	44.698	31.351	31.849	35.585	2'23.483	171,4	13:35'26.851
4	43.530	30.896	31.270	34.914	2'20.610	167,2	13:37'47.461
5	42.865	30.150	30.417	34.310	2'17.742	165,9	13:40'05.203
6	41.576	29.795	29.968	35.307	2'16.646	167,4	13:42'21.849
7	41.363	29.795	31.285	34.696	2'17.139	169,5	13:44'38.988
8	41.166	29.336	30.069	34.960	2'15.531	170,3	13:46'54.519
9	41.134	29.328	30.024	33.849	2'14.335	171,2	13:49'08.854
10	40.739	28.977	29.648	33.212	2'12.576	<b>176,2</b>	13:51'21.430
11	40.100	29.035	29.077	33.344	2'11.556	170,3	13:53'32.986
12	40.964	28.965	28.530	32.756	2'11.215	168,2	13:55'44.201
13	<b>40.037</b>	28.899	28.632	<b>32.651</b>	2'10.219	171,7	13:57'54.420
14	40.159	<b>28.514</b>	<b>28.521</b>	32.669	<b>2'09.863</b>	170,1	14:00'04.283

12° 13 D. BERGAMINI (2'10.051)								
Lap	Seg.1	Seg.2	Seg.3	Seg.4	Lap Time	km/h	Local Time	
1								13:30'10.073
2	1'13.295	33.178	33.870	37.648	2'57.991P	164,4	13:33'08.064	
3	44.980	31.584	32.214	35.302	2'24.080	168,5	13:35'32.144	
4	43.595	31.074	31.446	34.498	2'20.613	170,9	13:37'52.757	
5	42.716	30.328	31.320	34.369	2'18.733	<b>173,1</b>	13:40'11.490	
6	42.350	29.957	30.521	33.804	2'16.632	170,3	13:42'28.122	
7	41.728	29.646	30.406	33.399	2'15.179	169,5	13:44'43.301	
8	41.925	29.497	30.411	33.995	2'15.828	168,2	13:46'59.129	
9	41.650	30.285	31.852	38.008	2'21.795P	172,8	13:49'20.924	
10	4'28.860	30.379	30.273	34.610	6'04.122P	154,7	13:55'25.046	
11	41.127	28.656	29.266	32.440	2'11.489	167,7	13:57'36.535	
12	40.830	28.695	28.922	32.322	2'10.769	168,0	13:59'47.304	
13	<b>40.459</b>	<b>28.487</b>	<b>28.838</b>	<b>32.267</b>	<b>2'10.051</b>	169,8	14:01'57.355	

13° 55 B. CROCKFORD (2'10.685)								
Lap	Seg.1	Seg.2	Seg.3	Seg.4	Lap Time	km/h	Local Time	
1								13:30'06.320
2	1'12.448	34.236	33.794	37.858	2'58.336P	166,2	13:33'04.656	
3	43.736	32.420	32.421	36.105	2'24.682	169,5	13:35'29.338	
4	43.671	31.409	31.702	35.596	2'22.378	170,1	13:37'51.716	
5	42.718	31.972	31.605	37.583	2'23.878	169,8	13:40'15.594	
6	42.780	30.545	31.419	39.131	2'23.875P	167,7	13:42'39.469	
7	2'20.587	30.665	31.022	35.059	3'57.333P	166,2	13:46'36.802	
8	41.978	29.876	30.636	34.290	2'16.780	167,7	13:48'53.582	
9	41.780	29.510	30.452	33.874	2'15.616	167,4	13:51'09.198	
10	41.431	29.979	30.179	33.360	2'14.949	169,0	13:53'24.147	
11	41.510	29.220	29.689	33.229	2'13.648	168,2	13:55'37.795	
12	40.902	29.075	29.735	32.874	2'12.586	169,3	13:57'50.381	
13	<b>40.161</b>	<b>28.825</b>	<b>29.172</b>	<b>32.527</b>	<b>2'10.685</b>	<b>177,3</b>	14:00'01.066	

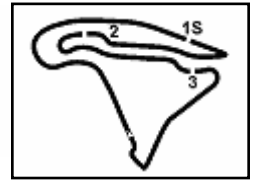
14° 47 J. KUSMIERCZYK (2'10.785)								
Lap	Seg.1	Seg.2	Seg.3	Seg.4	Lap Time	km/h	Local Time	
1								13:30'02.120
2	1'14.520	33.088	35.134	36.997	2'59.739P	161,4	13:33'01.859	
3	45.042	31.198	32.225	35.819	2'24.284	165,1	13:35'26.143	
4	44.967	30.865	31.475	35.036	2'22.343	168,8	13:37'48.486	
5	42.923	30.184	30.987	34.365	2'18.459	171,4	13:40'06.945	
6	41.881	29.571	30.297	33.618	2'15.367	172,5	13:42'22.312	
7	41.480	29.907	30.393	33.882	2'15.662	<b>177,9</b>	13:44'37.974	
8	41.424	29.281	29.787	33.302	2'13.794	168,8	13:46'51.768	
9	41.124	28.997	29.801	33.757	2'13.679	172,5	13:49'05.447	
10	41.078	29.213	29.546	33.187	2'13.024	175,9	13:51'18.471	
11	40.677	28.981	29.460	32.787	2'11.905	176,8	13:53'30.376	
12	40.895	29.339	29.232	32.860	2'12.326	174,5	13:55'42.702	
13	40.836	29.250	29.376	32.790	2'12.252	170,1	13:57'54.954	
14	<b>40.264</b>	<b>28.781</b>	<b>28.990</b>	<b>32.750</b>	<b>2'10.785</b>	172,8	14:00'05.739	

15° 62 F. JURÁNEK (2'11.544)								
Lap	Seg.1	Seg.2	Seg.3	Seg.4	Lap Time	km/h	Local Time	
1								13:30'00.390
2	1'41.729	34.135	33.867	38.719	3'28.450P	159,5	13:33'28.840	
3	44.245	32.437	32.264	35.680	2'24.626C	165,9	13:35'53.466	
4	43.238	31.060	31.114	34.484	2'19.896	166,2	13:38'13.362	
5	42.334	31.160	31.061	38.097	2'22.652P	167,2	13:40'36.014	
6	1'49.193	31.189	30.994	35.575	3'26.951P	164,4	13:44'02.965	
7	42.903	31.471	31.602	34.789	2'20.765	159,5	13:46'23.730	
8	42.069	29.929	30.311	33.907	2'16.216	168,8	13:48'39.946	
9	42.209	29.828	30.104	33.608	2'15.749	166,7	13:50'55.695	
10	41.351	29.443	30.209	33.408	2'14.411	168,2	13:53'10.106	
11	41.620	29.825	30.175	34.052	2'15.672	169,3	13:55'25.778	
12	44.392	30.102	30.257	33.923	2'18.674	168,0	13:57'44.452	

09/09/2022 P = Pits In/Out - C = Lap Time Cancelled

These data/results cannot be reproduced, stored and/or transmitted in whole or in part by any manner of electronic, mechanical, photocopying, recording, broadcasting or otherwise now known or herein after developed without the previous express consent by the copyright owner, except for reproduction in daily press and regular printed publications on sale to the public within 60 days of the event related to those data/results and always provided that copyright symbol appears together as follows below.

© DORNA WSBK ORGANIZATION Srl 2022

**6.3****Yamaha R3  
731/06**

Magny-Cours 4.411 m

**3 / 3**

13	41.545	<b>29.304</b>	29.588	32.922	2'13.359	169,3	13:59'57.811	1									13:30'02.465
14	<b>40.582</b>	29.783	<b>28.956</b>	<b>32.223</b>	<b>2'11.544</b>	<b>176,8</b>	14:02'09.355	2	1'16.398	32.741	34.374	37.169	3'00.682P	163,4	13:33'03.147		

**16° 12 J. PEDEMONTE (2'11.858)**

Lap	Seg.1	Seg.2	Seg.3	Seg.4	Lap Time	km/h	Local Time
1							13:30'04.920
2	1'14.126	33.433	33.772	37.389	2'58.720P	164,1	13:33'03.640
3	44.686	30.820	31.435	36.030	2'22.971	<b>171,4</b>	13:35'26.611
4					14'39.750P		13:50'06.361
5	1'04.695	30.493	30.447	34.570	2'40.205P	165,1	13:52'46.566
6	41.128	29.443	29.784	33.256	2'13.611	167,2	13:55'00.177
7	41.023	29.447	29.721	33.431	2'13.622	167,4	13:57'13.799
8	40.958	29.110	29.261	<b>33.010</b>	2'12.339	167,7	13:59'26.138
9	<b>40.843</b>	<b>28.815</b>	<b>29.101</b>	33.099	<b>2'11.858</b>	168,0	14:01'37.996

**21° 99 M. VIKINGASKOLD (2'15.552)**

Lap	Seg.1	Seg.2	Seg.3	Seg.4	Lap Time	km/h	Local Time
1							13:29'53.109
2	1'07.938	33.577	34.167	38.098	2'53.780P	153,8	13:32'46.889
3	44.178	34.035	33.458	36.158	2'27.829	162,2	13:35'14.718
4	43.199	31.738	32.733	36.372	2'24.042	164,4	13:37'38.760
5	42.885	31.215	32.085	35.378	2'21.563	165,9	13:40'00.323
6	42.463	30.459	31.004	34.959	2'18.885	165,9	13:42'19.208
7	42.221	30.762	31.704	34.787	2'19.474	169,0	13:44'38.682
8	42.279	30.488	31.861	35.538	2'20.166	169,5	13:46'58.848
9	41.683	30.263	31.114	34.251	2'17.311	<b>170,3</b>	13:49'16.159
10	41.837	30.102	31.398	34.199	2'17.536	169,0	13:51'33.695
11	41.645	30.068	31.186	34.328	2'17.227	169,5	13:53'50.922
12	41.789	30.356	30.959	33.867	2'16.971	169,3	13:56'07.893
13	<b>41.335</b>	30.043	<b>30.365</b>	<b>33.809</b>	<b>2'15.552</b>	168,8	13:58'23.445
14	41.515	<b>29.887</b>	30.764	<b>33.760</b>	2'15.926	170,1	14:00'39.371

**17° 88 E. BURR (2'11.880)**

Lap	Seg.1	Seg.2	Seg.3	Seg.4	Lap Time	km/h	Local Time
1							13:30'14.722
2	1'12.852	32.151	33.790	36.128	2'54.921P	163,1	13:33'09.643
3	43.410	31.918	31.934	34.369	2'21.631	164,6	13:35'31.274
4	41.855	30.259	30.536	34.929	2'17.579	<b>173,4</b>	13:37'48.853
5	42.674	30.191	30.457	33.806	2'17.128	168,8	13:40'05.981
6	41.302	29.591	30.005	34.114	2'15.012	168,8	13:42'20.993
7	41.142	30.371	30.203	33.628	2'15.344	163,4	13:44'36.337
8	41.631	29.579	29.865	33.961	2'15.036	165,4	13:46'51.373
9	40.749	28.674	30.095	33.384	2'12.902	170,3	13:49'04.275
10	40.640	28.565	29.898	33.608	2'12.711	167,4	13:51'16.986
11	<b>40.335</b>	<b>28.513</b>	29.709	33.371	2'11.928	170,6	13:53'28.914
12	40.769	29.088	29.482	34.963	2'14.302P	161,2	13:55'43.216
13	1'32.059	32.702	31.039	33.998	3'09.798P	135,5	13:58'53.014
14	40.676	28.885	<b>29.201</b>	<b>33.118</b>	<b>2'11.880</b>	167,4	14:01'04.894

**18° 42 C. GIMENEZ (2'12.049)**

Lap	Seg.1	Seg.2	Seg.3	Seg.4	Lap Time	km/h	Local Time
1							13:30'09.103
2	1'17.507	33.524	34.471	36.656	3'02.158P	163,6	13:33'11.261
3	44.882	31.681	32.238	35.808	2'24.609	164,4	13:35'35.870
4	43.511	30.169	31.186	34.522	2'19.388	165,9	13:37'55.258
5	42.861	29.937	30.920	34.199	2'17.917	165,4	13:40'13.175
6	42.494	29.547	30.300	33.739	2'16.080	165,4	13:42'29.255
7	42.373	29.326	30.337	33.705	2'15.741	164,9	13:44'44.996
8	42.100	29.492	30.068	33.431	2'15.091	164,6	13:47'00.087
9	41.729	29.532	32.941	36.067	2'20.269	167,4	13:49'20.356
10	42.122	29.269			2'17.119C	164,4	13:51'37.475
11	41.341	29.169	29.385	33.747	2'13.642	165,1	13:53'51.117
12	41.730	30.837	33.124	36.102	2'21.793	167,4	13:56'12.910
13	41.327	<b>28.866</b>	<b>29.057</b>	<b>32.799</b>	<b>2'12.049</b>	164,1	13:58'24.959
14	<b>41.017</b>	29.175	29.851	33.657	2'13.700	<b>167,7</b>	14:00'38.659

**19° 77 M. ABDALAZIZ BINLADIN (2'14.402)**

Lap	Seg.1	Seg.2	Seg.3	Seg.4	Lap Time	km/h	Local Time
1							13:30'03.635
2	1'13.809	32.798	34.824	37.218	2'58.649P	161,9	13:33'02.284
3	44.584	30.761	31.255	35.389	2'21.989	168,2	13:35'24.273
4	43.618	30.938	31.221	33.574	2'19.351	166,2	13:37'43.624
5	42.032	30.229	30.520	34.438	2'17.219	168,2	13:40'00.843
6	41.935	29.817	29.917	<b>32.733</b>	<b>2'14.402</b>	<b>170,6</b>	13:42'15.245
7	<b>41.369</b>	29.692	30.181	33.811	2'15.053	170,1	13:44'30.298
8	41.794	<b>29.059</b>	<b>29.738</b>	1'21.869	3'02.460P	166,7	13:47'32.758

**20° 56 V. GELLY (2'15.492)**

Lap	Seg.1	Seg.2	Seg.3	Seg.4	Lap Time	km/h	Local Time
-----	-------	-------	-------	-------	----------	------	------------

09/09/2022 P = Pits In/Out - C = Lap Time Cancelled

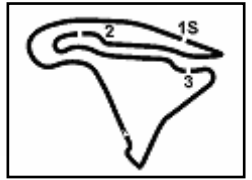
These data/results cannot be reproduced, stored and/or transmitted in whole or in part by any manner of electronic, mechanical, photocopying, recording, broadcasting or otherwise now known or herein after developed without the previous express consent by the copyright owner, except for reproduction in daily press and regular printed publications on sale to the public within 60 days of the event related to those data/results and always provided that copyright symbol appears together as follows below.

© DORNA WSBK ORGANIZATION Srl 2022



6.4

Yamaha R3  
731/06



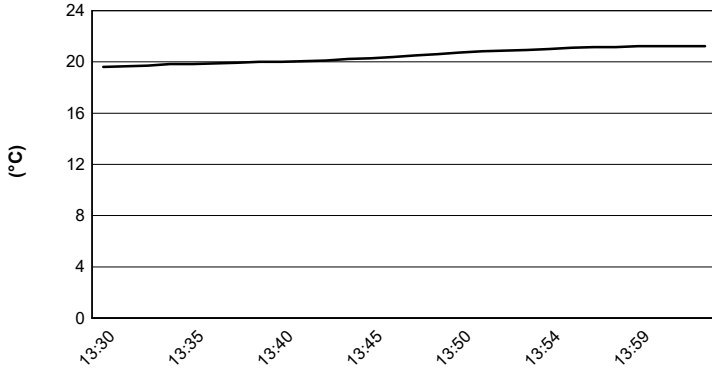
Magny-Cours 4.411 m

# Pirelli French Round, 9-11 September 2022

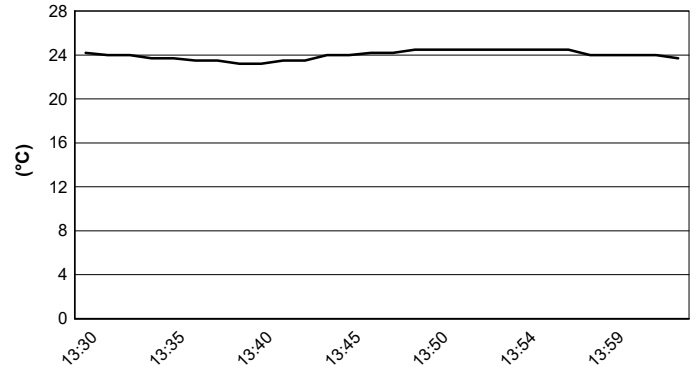
## Weather Report Superpole

Session started 13:30 - Session ended 14:03

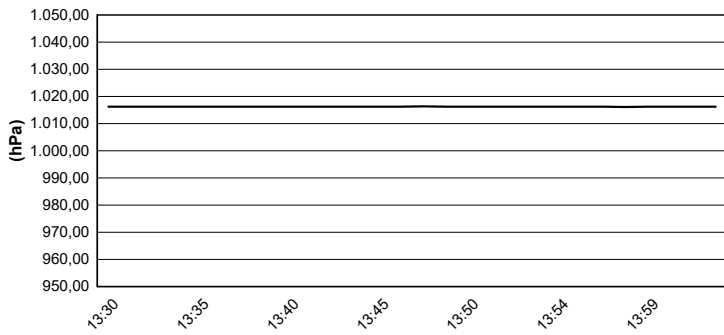
### Air Temperature



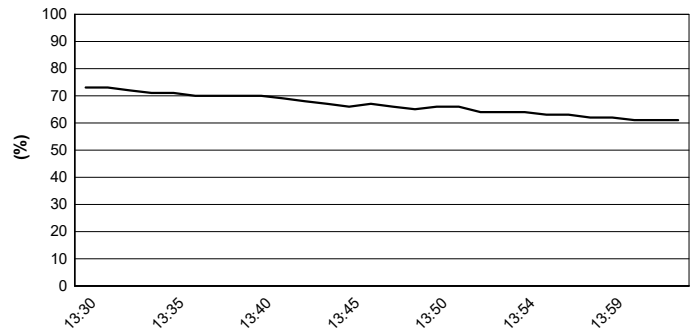
### Track Temperature



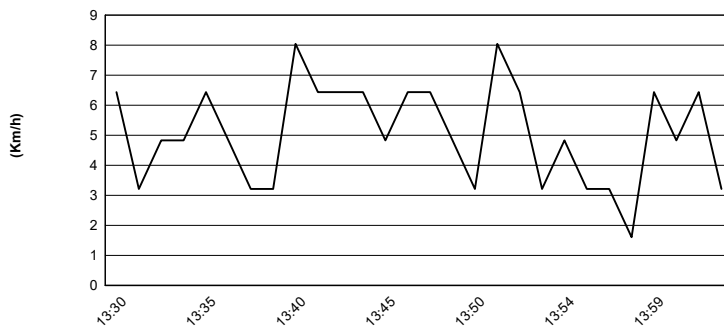
### Air Pressure



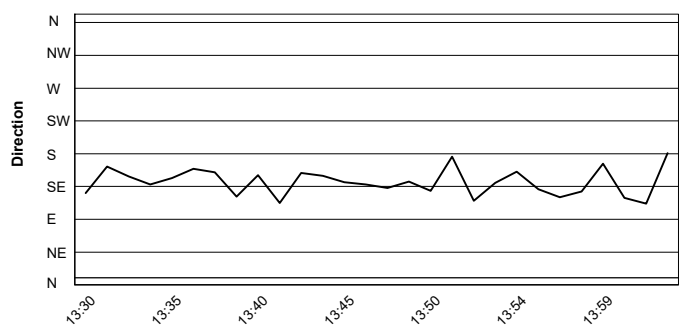
### Humidity



### Wind Speed



### Wind Direction



09/09/2022

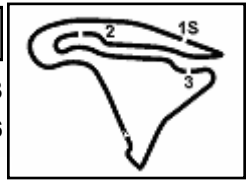
These data/results cannot be reproduced, stored and/or transmitted in whole or in part by any manner of electronic, mechanical, photocopying, recording, broadcasting or otherwise now known or herein after developed without the previous express consent by the copyright owner, except for reproduction in daily press and regular printed publications on sale to the public within 60 days of the event related to those data/results and always provided that copyright symbol appears together as follows below.

© DORNA WSBK ORGANIZATION Srl 2022





6.5

Yamaha R3  
731/06

Magny-Cours 4.411 m

## Pirelli French Round, 9-11 September 2022

### Best Lap & Speed

No.	Rider Bike	Nat	Best Lap		FP		SP											
			LL	SPD	LL	SPD	LL	SPD										
1	<b>88 E. BURR</b> Yamaha R3	BRA	<b>1'58.904</b> 27 176,1		<b>1'58.904</b> 14 <b>176,1</b>		2'11.880 13 173,3											
2	<b>80 G. MANSO</b> Yamaha R3	BRA	<b>1'59.197</b> 29 178,8		<b>1'59.197</b> 15 <b>178,8</b>		2'08.420 14 178,2											
3	<b>26 K. FONTAINHA</b> Yamaha R3	BRA	<b>1'59.495</b> 28 181,5		<b>1'59.495</b> 15 <b>181,5</b>		2'09.737 13 176,1											
4	<b>10 G. CARBONNEL</b> Yamaha R3	FRA	<b>1'59.649</b> 28 182,1		<b>1'59.649</b> 15 <b>182,1</b>		2'08.917 13 169,5											
5	<b>69 A. MC DONALD</b> Yamaha R3	AUS	<b>1'59.696</b> 29 179,7		<b>1'59.696</b> 15 <b>179,7</b>		2'08.711 14 169,8											
6	<b>89 W. NUGROHO</b> Yamaha R3	INA	<b>1'59.728</b> 26 179,4		<b>1'59.728</b> 15 174,1		2'09.287 11 <b>179,4</b>											
7	<b>39 E. VALENTIM</b> Yamaha R3	BRA	<b>1'59.995</b> 27 178,5		<b>1'59.995</b> 13 <b>178,5</b>		2'08.151 14 177,6											
8	<b>45 C. ROUGÉ</b> Yamaha R3	FRA	<b>2'00.051</b> 28 179,4		<b>2'00.051</b> 15 <b>179,4</b>		2'08.786 13 175,9											
9	<b>32 K. KEANKUM</b> Yamaha R3	THA	<b>2'00.166</b> 28 182,7		<b>2'00.166</b> 15 <b>182,7</b>		2'08.917 13 182,1											
10	<b>13 D. BERGAMINI</b> Yamaha R3	ITA	<b>2'00.449</b> 27 173,0		<b>2'00.449</b> 15 <b>173,0</b>		2'10.051 12 <b>173,0</b>											
11	<b>37 A. PIZZOLI</b> Yamaha R3	ITA	<b>2'00.808</b> 9 179,1		<b>2'00.808</b> 9 <b>179,1</b>													
12	<b>18 D. PALLADINO</b> Yamaha R3	ITA	<b>2'01.227</b> 27 175,6		<b>2'01.227</b> 14 <b>175,6</b>		2'09.295 13 173,0											
13	<b>46 D. NOWAK</b> Yamaha R3	POL	<b>2'01.361</b> 28 177,6		<b>2'01.361</b> 15 <b>177,6</b>		2'08.595 13 <b>177,6</b>											
14	<b>55 B. CROCKFORD</b> Yamaha R3	GBR	<b>2'01.525</b> 26 177,3		<b>2'01.525</b> 14 173,9		2'10.685 12 <b>177,3</b>											
15	<b>62 F. JURÁNEK</b> Yamaha R3	CZE	<b>2'01.653</b> 27 176,7		<b>2'01.653</b> 14 173,9		2'11.544 13 <b>176,7</b>											
16	<b>42 C. GIMENEZ</b> Yamaha R3	ESP	<b>2'01.698</b> 28 170,6		<b>2'01.698</b> 15 <b>170,6</b>		2'12.049 13 167,7											
17	<b>12 J. PEDEMONTE</b> Yamaha R3	FRA	<b>2'01.942</b> 22 174,4		<b>2'01.942</b> 14 <b>174,4</b>		2'11.858 8 171,4											
18	<b>47 J. KUSMIERCZYK</b> Yamaha R3	POL	<b>2'02.190</b> 28 177,9		<b>2'02.190</b> 15 174,1		2'10.785 13 <b>177,9</b>											
19	<b>77 M. ABDALAZIZ BINLADIN</b> Yamaha R3	UAE	<b>2'02.490</b> 21 170,6		<b>2'02.490</b> 14 170,3		2'14.402 7 <b>170,6</b>											
20	<b>25 T. HORN</b> Yamaha R3	USA	<b>2'02.855</b> 28 176,1		<b>2'02.855</b> 15 173,9		2'09.863 13 <b>176,1</b>											
21	<b>56 V. GELLY</b> Yamaha R3	FRA	<b>2'02.888</b> 22 175,0		<b>2'02.888</b> 14 173,3		2'15.492 8 <b>175,0</b>											
22	<b>99 M. VIKINGASKOLD</b> Yamaha R3	SWE	<b>2'06.528</b> 27 173,0		<b>2'06.528</b> 14 <b>173,0</b>		2'15.552 13 170,3											

09/09/2022

These data/results cannot be reproduced, stored and/or transmitted in whole or in part by any manner of electronic, mechanical, photocopying, recording, broadcasting or otherwise now known or herein after developed without the previous express consent by the copyright owner, except for reproduction in daily press and regular printed publications on sale to the public within 60 days of the event related to those data/results and always provided that copyright symbol appears together as follows below.

© DORNA WSBK ORGANIZATION Srl 2022

PERUGIA TIMING