

**Prosecco DOC - UK Round, 15-17 July 2022**  
**Results Free Practice 2nd Session**

No.	Rider	Nat	Team	Bike	Class	Time	Gap	Rel.	Laps	Speed	
										Avg	Max
1	<b>77 D. AEGERTER</b>	SUI	Ten Kate Racing Yamaha	Yamaha YZF R6		<b>1'30.939</b>			22	159,258	<b>238,1</b>
2	<b>28 G. VAN STRAALLEN</b>	NED	EAB Racing Team	Yamaha YZF R6		<b>1'31.163</b>	0.224	0.224	23	158,867	<b>236,1</b>
3	<b>11 N. BULEGA</b>	ITA	Aruba.it Racing WorldSSP Team	Ducati Panigale V2		<b>1'31.164</b>	0.225	0.001	17	158,865	<b>238,1</b>
4	<b>16 J. CLUZEL</b>	FRA	GMT94 Yamaha	Yamaha YZF R6		<b>1'31.214</b>	0.275	0.050	23	158,778	<b>237,1</b>
5	<b>3 R. DE ROSA</b>	ITA	Orelac Racing Verdnavtura WorldSSP	Ducati Panigale V2		<b>1'31.262</b>	0.323	0.048	22	158,695	<b>236,1</b>
6	<b>64 F. CARICASULO</b>	ITA	Althea Racing	Ducati Panigale V2		<b>1'31.339</b>	0.400	0.077	20	158,561	<b>237,1</b>
7	<b>7 L. BALDASSARRI</b>	ITA	Evan Bros.WorldSSP Yamaha Team	Yamaha YZF R6		<b>1'31.388</b>	0.449	0.049	20	158,476	<b>237,1</b>
8	<b>61 C. ONCU</b>	TUR	Kawasaki Puccetti Racing	Kawasaki ZX-6R		<b>1'31.568</b>	0.629	0.180	21	158,164	<b>235,0</b>
9	<b>38 H. SOOMER</b>	EST	Dynavolt Triumph	Triumph Street Triple RS		<b>1'31.580</b>	0.641	0.012	21	158,144	<b>234,5</b>
10	<b>62 S. MANZI</b>	ITA	Dynavolt Triumph	Triumph Street Triple RS		<b>1'31.699</b>	0.760	0.119	20	157,938	<b>241,3</b>
11	<b>69 T. BOOTH-AMOS</b>	GBR	Prodina Racing WorldSSP	Kawasaki ZX-6R	*	<b>1'31.748</b>	0.809	0.049	16	157,854	<b>238,1</b>
12	<b>56 P. SEBESTYEN</b>	HUN	Evan Bros.WorldSSP Yamaha Team	Yamaha YZF R6		<b>1'31.866</b>	0.927	0.118	22	157,651	<b>234,5</b>
13	<b>10 U. ORRADRE</b>	ESP	MS Racing Yamaha WorldSSP	Yamaha YZF R6		<b>1'31.948</b>	1.009	0.082	22	157,511	<b>233,5</b>
14	<b>25 M. BRENNER</b>	SUI	VFT Racing	Yamaha YZF R6	*	<b>1'32.154</b>	1.215	0.206	21	157,159	<b>232,0</b>
15	<b>17 K. SMITH</b>	GBR	VFT Racing	Yamaha YZF R6		<b>1'32.155</b>	1.216	0.001	12	157,157	<b>231,0</b>
16	<b>54 B. SOFUOGLU</b>	TUR	MV Agusta Reparto Corse	MV Agusta F3 800 RR	*	<b>1'32.216</b>	1.277	0.061	24	157,053	<b>240,8</b>
17	<b>99 A. HUERTAS</b>	ESP	MTM Kawasaki	Kawasaki ZX-6R		<b>1'32.246</b>	1.307	0.030	19	157,002	<b>233,5</b>
18	<b>55 Y. MONTELLA</b>	ITA	Kawasaki Puccetti Racing	Kawasaki ZX-6R		<b>1'32.276</b>	1.337	0.030	17	156,951	<b>236,1</b>
19	<b>23 I. VINALES</b>	ESP	D34G Racing	Ducati Panigale V2	*	<b>1'32.336</b>	1.397	0.060	20	156,849	<b>236,1</b>
20	<b>4 H. TRUELOVE</b>	GBR	ColinAppleyard/Macadam-Yamaha	Yamaha YZF R6		<b>1'32.404</b>	1.465	0.068	19	156,733	<b>229,5</b>
21	<b>94 A. VERDOIA</b>	FRA	GMT94 Yamaha	Yamaha YZF R6		<b>1'32.553</b>	1.614	0.149	18	156,481	<b>229,5</b>
22	<b>21 B. CURRIE</b>	AUS	Motozoo Racing by Puccetti	Kawasaki ZX-6R		<b>1'32.593</b>	1.654	0.040	11	156,414	<b>232,0</b>
23	<b>27 M. CASADEI</b>	ITA	MV Agusta Reparto Corse	MV Agusta F3 800 RR		<b>1'32.779</b>	1.840	0.186	21	156,100	<b>237,1</b>
24	<b>24 L. TACCINI</b>	ITA	Ten Kate Racing Yamaha	Yamaha YZF R6		<b>1'33.036</b>	2.097	0.257	20	155,669	<b>237,1</b>
25	<b>50 O. VOSTATEK</b>	CZE	MS Racing Yamaha WorldSSP	Yamaha YZF R6		<b>1'33.199</b>	2.260	0.163	22	155,397	<b>238,1</b>
26	<b>22 F. FULIGNI</b>	ITA	D34G Racing	Ducati Panigale V2	*	<b>1'33.640</b>	2.701	0.441	21	154,665	<b>234,0</b>
27	<b>73 M. KOFLER</b>	AUT	CM Racing	Ducati Panigale V2		<b>1'33.881</b>	2.942	0.241	19	154,268	<b>233,5</b>
28	<b>6 J. BUIJS</b>	NED	Motozoo Racing by Puccetti	Kawasaki ZX-6R	*	<b>1'34.444</b>	3.505	0.563	19	153,348	<b>235,0</b>
29	<b>36 S. KROEZE</b>	NED	Kallio Racing	Yamaha YZF R6	*	<b>1'34.763</b>	3.824	0.319	20	152,832	<b>233,0</b>
<b>Out 105% in this Session</b>											
30	<b>9 S. JESPERSEN</b>	DEN	CM Racing	Ducati Panigale V2					2		<b>230,5</b>
31	<b>32 O. BAYLISS</b>	AUS	BARNI Spark Racing Team	Ducati Panigale V2					0		<b>231,5</b>
32	<b>52 P. HOBELBERGER</b>	GER	Kallio Racing	Yamaha YZF R6					0		

**Qualifying Lap Time (105% of 1'30.939): 1'35.486**

\* WorldSSP Challenge

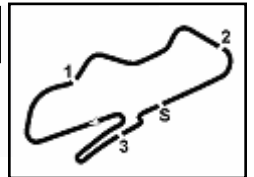
AIR	Humidity:	56%	Temp:	21°C
TRACK	Condition:	Dry	Temp:	33°C

Records	Pole	(QP)	2015	K.Sofuoglu	1'29.925	161,050	Km/h
	Race	(RC)	2015	J.Cluzel	1'30.425	160,160	Km/h
	All Times	(QP)	2015	K.Sofuoglu	1'29.925	161,050	Km/h

Start 15/07/2022 16:00 End 16:49 The results are provisional until the end of the time limit for protests and appeals and the completion of the technical checks.

These data/results cannot be reproduced, stored and/or transmitted in whole or in part by any manner of electronic, mechanical, photocopying, recording, broadcasting or otherwise now known or herein after developed without the previous express consent by the copyright owner, except for reproduction in daily press and regular printed publications on sale to the public within 60 days of the event related to those data/results and always provided that copyright symbol appears together as follows below.

© DORNA WSBK ORGANIZATION Srl 2022



**Prosecco DOC - UK Round, 15-17 July 2022**  
**Results Free Practice 2nd Session**

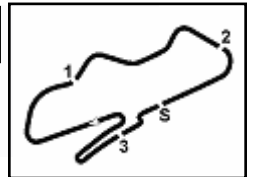
**Session Highlights**

Local Time	No. Rider	Description
16.00.00		Start
16.00.04		WorldSSP Pit Intervention Time: 1min 3secs
16.01.37	<b>32</b> O. BAYLISS	Crashed - Turn 10
16.06.58	<b>55</b> Y. MONTELLA	Crashed - Turn 12
16.07.06	<b>55</b> Y. MONTELLA	Re-joined
16.07.43	<b>50</b> O. VOSTATEK	Lap Cancelled [1'35.740] - Exceeded Track Limits - Turn 10
16.09.51	<b>11</b> N. BULEGA	Lap Cancelled [1'32.258] - Yellow Flag - Turn 12
16.10.01	<b>21</b> B. CURRIE	Lap Cancelled [1'32.716] - Yellow Flag - Turn 12
16.10.06	<b>25</b> M. BRENNER	Lap Cancelled [1'32.753] - Yellow Flag - Turn 12
16.10.11	<b>94</b> A. VERDOIA	Lap Cancelled [1'32.673] - Yellow Flag - Turn 12
16.10.16	<b>73</b> M. KOFLER	Lap Cancelled [1'35.006] - Yellow Flag - Turn 12
16.10.26	<b>4</b> H. TRUELOVE	Lap Cancelled [1'33.332] - Yellow Flag - Turn 12
16.13.21	<b>6</b> J. BUIS	On the Gravel - Re-Joined - Turn 12
16.18.26	<b>54</b> B. SOFUOGLU	Lap Cancelled [1'45.899] - Exceeded Track Limits - Turn 10
16.20.57	<b>25</b> M. BRENNER	Lap Cancelled [1'34.052] - Exceeded Track Limits - Turn 10
16.23.06	<b>56</b> P. SEBESTYEN	Lap Cancelled [1'41.670] - Exceeded Track Limits - Turn 9
16.27.15	<b>99</b> A. HUERTAS	Lap Cancelled [1'43.279] - Exceeded Track Limits - Turn 9
16.27.35	<b>77</b> D. AEGERTER	Lap Cancelled [1'41.945] - Exceeded Track Limits - Turn 10
16.29.13	<b>61</b> C. ONCU	Lap Cancelled [1'43.689] - Exceeded Track Limits - Turn 7
16.35.32	<b>17</b> K. SMITH	Crashed - Turn 1
16.38.00	<b>10</b> U. ORRADRE	Lap Cancelled [1'35.241] - Yellow Flag - Turn 1
16.38.22	<b>21</b> B. CURRIE	On the Gravel - Turn 5
16.39.09	<b>69</b> T. BOOTH-AMOS	Crashed - Turn 8
16.39.33	<b>69</b> T. BOOTH-AMOS	Re-joined
16.41.10	<b>21</b> B. CURRIE	Lap Cancelled [1'37.777] - Yellow Flag - Turn 1
16.41.20	<b>6</b> J. BUIS	Lap Cancelled [1'38.001] - Yellow Flag - Turn 1
16.41.25	<b>36</b> S. KROEZE	Lap Cancelled [1'37.756] - Yellow Flag - Turn 1
16.41.35	<b>56</b> P. SEBESTYEN	Lap Cancelled [1'40.348] - Yellow Flag - Turn 1
16.41.40	<b>16</b> J. CLUZEL	Lap Cancelled [1'40.916] - Yellow Flag - Turn 1
16.41.50	<b>99</b> A. HUERTAS	Lap Cancelled [1'32.455] - Yellow Flag - Turn 1
16.43.01	<b>99</b> A. HUERTAS	Lap Cancelled [1'32.316] - Yellow Flag - Turn 5
16.43.10	<b>56</b> P. SEBESTYEN	Lap Cancelled [1'32.441] - Yellow Flag - Turn 5
16.43.15	<b>16</b> J. CLUZEL	Lap Cancelled [1'35.950] - Yellow Flag - Turn 5
16.43.56	<b>69</b> T. BOOTH-AMOS	Lap Cancelled [2'40.345] - Yellow Flag - Turn 5
16.44.05	<b>38</b> H. SOOMER	Lap Cancelled [1'32.025] - Yellow Flag - Turn 5
16.44.15	<b>25</b> M. BRENNER	Lap Cancelled [1'38.230] - Yellow Flag - Turn 5
16.44.26	<b>27</b> M. CASADEI	Lap Cancelled [7'54.532] - Yellow Flag - Turn 5
16.44.30	<b>24</b> L. TACCINI	Lap Cancelled [1'34.541] - Yellow Flag - Turn 5
16.44.35	<b>22</b> F. FULIGNI	Lap Cancelled [1'34.831] - Yellow Flag - Turn 5
16.44.40	<b>77</b> D. AEGERTER	Lap Cancelled [1'31.296] - Yellow Flag - Turn 5
16.44.51	<b>54</b> B. SOFUOGLU	Lap Cancelled [1'32.783] - Yellow Flag - Turn 5
16.44.55	<b>73</b> M. KOFLER	Lap Cancelled [1'34.385] - Yellow Flag - Turn 5
16.45.00	<b>61</b> C. ONCU	Lap Cancelled [1'32.926] - Yellow Flag - Turn 5
16.45.05	<b>55</b> Y. MONTELLA	Lap Cancelled [1'40.899] - Yellow Flag - Turn 5
16.45.31	<b>10</b> U. ORRADRE	Lap Cancelled [1'35.685] - Yellow Flag - Turn 5
16.45.35	<b>3</b> R. DE ROSA	Lap Cancelled [1'32.204] - Yellow Flag - Turn 5
16.45.40	<b>36</b> S. KROEZE	Lap Cancelled [1'34.896] - Yellow Flag - Turn 5
16.45.45	<b>6</b> J. BUIS	Lap Cancelled [1'37.124] - Yellow Flag - Turn 5
16.45.50	<b>28</b> G. VAN STRAALLEN	Lap Cancelled [1'33.797] - Yellow Flag - Turn 5
16.45.55	<b>23</b> I. VINALES	Lap Cancelled [1'39.726] - Yellow Flag - Turn 5
16.46.00	<b>99</b> A. HUERTAS	Lap Cancelled [1'32.008] - Yellow Flag - Turn 5
16.46.05	<b>56</b> P. SEBESTYEN	Lap Cancelled [1'42.028] - Yellow Flag - Turn 5
16.46.10	<b>27</b> M. CASADEI	Lap Cancelled [1'33.455] - Yellow Flag - Turn 5
16.46.15	<b>16</b> J. CLUZEL	Lap Cancelled [1'33.474] - Yellow Flag - Turn 5
16.46.20	<b>11</b> N. BULEGA	Lap Cancelled [1'31.410] - Yellow Flag - Turn 5
16.46.25	<b>7</b> L. BALDASSARRI	Lap Cancelled [1'32.490] - Yellow Flag - Turn 5

Start                      End                      The results are provisional until the end of the time limit for protests and appeals  
15/07/2022              16:00                      16:49                      and the completion of the technical checks.

These data/results cannot be reproduced, stored and/or transmitted in whole or in part by any manner of electronic, mechanical, photocopying, recording, broadcasting or otherwise now known or herein after developed without the previous express consent by the copyright owner, except for reproduction in daily press and regular printed publications on sale to the public within 60 days of the event related to those data/results and always provided that copyright symbol appears together as follows below.

© DORNA WSBK ORGANIZATION Srl 2022



**Prosecco DOC - UK Round, 15-17 July 2022**  
**Results Free Practice 2nd Session**

16.46.30	<b>64</b> F. <b>CARICASULO</b>	Lap Cancelled [1'31.544] - Yellow Flag - Turn 5
16.46.35	<b>62</b> S. <b>MANZI</b>	Lap Cancelled [1'32.147] - Yellow Flag - Turn 5
16.46.40	<b>38</b> H. <b>SOOMER</b>	Lap Cancelled [1'32.208] - Yellow Flag - Turn 5
16.46.46	<b>50</b> O. <b>VOSTATEK</b>	Lap Cancelled [1'33.411] - Yellow Flag - Turn 5
16.46.51	<b>77</b> D. <b>AEGERTER</b>	Lap Cancelled [1'31.316] - Yellow Flag - Turn 5
16.46.56	<b>24</b> L. <b>TACCINI</b>	Lap Cancelled [1'33.036] - Yellow Flag - Turn 5
16.47.01	<b>22</b> F. <b>FULIGNI</b>	Lap Cancelled [1'33.253] - Yellow Flag - Turn 5
16.47.11	<b>25</b> M. <b>BRENNER</b>	Lap Cancelled [1'32.850] - Yellow Flag - Turn 5
16.47.16	<b>54</b> B. <b>SOFUOGLU</b>	Lap Cancelled [1'35.326] - Yellow Flag - Turn 5
16.47.21	<b>73</b> M. <b>KOFLER</b>	Lap Cancelled [1'39.577] - Yellow Flag - Turn 5
16.47.26	<b>61</b> C. <b>ONCU</b>	Lap Cancelled [1'37.845] - Yellow Flag - Turn 5
16.47.31	<b>4</b> H. <b>TRUELOVE</b>	Lap Cancelled [15'35.150] - Yellow Flag - Turn 5
16.49.14		End Of Session

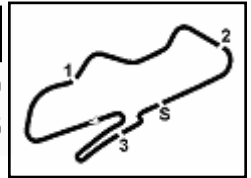
**Fastest Laps Sequence**

No.	Rider	Nat	Team	Bike	Local Time	Time	Gap	Avg
<b>64</b>	F. <b>CARICASULO</b>	ITA	Althea Racing	Ducati Panigale V2	16:03'18.648	<b>1'34.025</b>		154,031
<b>55</b>	Y. <b>MONTELLA</b>	ITA	Kawasaki Puccetti Racing	Kawasaki ZX-6R	16:03'26.841	<b>1'33.832</b>	-0.193	154,348
<b>10</b>	U. <b>ORRADRE</b>	ESP	MS Racing Yamaha WorldSSP	Yamaha YZF R6	16:03'27.148	<b>1'33.720</b>	-0.112	154,533
<b>62</b>	S. <b>MANZI</b>	ITA	Dynavolt Triumph	Triumph Street Triple RS	16:03'29.323	<b>1'33.613</b>	-0.107	154,709
<b>11</b>	N. <b>BULEGA</b>	ITA	Aruba.it Racing WorldSSP Team	Ducati Panigale V2	16:03'43.647	<b>1'32.711</b>	-0.902	156,214
<b>77</b>	D. <b>AEGERTER</b>	SUI	Ten Kate Racing Yamaha	Yamaha YZF R6	16:04'18.550	<b>1'32.574</b>	-0.137	156,446
<b>11</b>	N. <b>BULEGA</b>	ITA	Aruba.it Racing WorldSSP Team	Ducati Panigale V2	16:05'16.112	<b>1'32.465</b>	-0.109	156,630
<b>77</b>	D. <b>AEGERTER</b>	SUI	Ten Kate Racing Yamaha	Yamaha YZF R6	16:05'50.491	<b>1'31.941</b>	-0.524	157,523
<b>3</b>	R. <b>DE ROSA</b>	ITA	Orelac Racing Verdnatura WorldSSP	Ducati Panigale V2	16:06'16.891	<b>1'31.724</b>	-0.217	157,895
<b>3</b>	R. <b>DE ROSA</b>	ITA	Orelac Racing Verdnatura WorldSSP	Ducati Panigale V2	16:07'48.588	<b>1'31.697</b>	-0.027	157,942
<b>77</b>	D. <b>AEGERTER</b>	SUI	Ten Kate Racing Yamaha	Yamaha YZF R6	16:08'53.842	<b>1'31.487</b>	-0.210	158,304
<b>3</b>	R. <b>DE ROSA</b>	ITA	Orelac Racing Verdnatura WorldSSP	Ducati Panigale V2	16:10'51.641	<b>1'31.425</b>	-0.062	158,412
<b>77</b>	D. <b>AEGERTER</b>	SUI	Ten Kate Racing Yamaha	Yamaha YZF R6	16:19'36.612	<b>1'31.290</b>	-0.135	158,646
<b>77</b>	D. <b>AEGERTER</b>	SUI	Ten Kate Racing Yamaha	Yamaha YZF R6	16:25'42.885	<b>1'30.939</b>	-0.351	159,258

Start 15/07/2022 16:00 End 16:49 The results are provisional until the end of the time limit for protests and appeals and the completion of the technical checks.

These data/results cannot be reproduced, stored and/or transmitted in whole or in part by any manner of electronic, mechanical, photocopying, recording, broadcasting or otherwise now known or herein after developed without the previous express consent by the copyright owner, except for reproduction in daily press and regular printed publications on sale to the public within 60 days of the event related to those data/results and always provided that copyright symbol appears together as follows below.

© DORNA WSBK ORGANIZATION Srl 2022


**Prosecco DOC - UK Round, 15-17 July 2022**  
**Free Practices Combined Results after FP2**

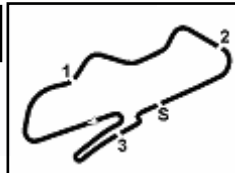
No.	Rider	Nat	Team	Bike	Class	FP1	FP2	Time	Gap	Rel.	Avg	LL
1	<b>77 D. AEGERTER</b>	SUI	Ten Kate Racing Yamaha	Yamaha YZF R6		1'31.688	<b>1'30.939</b>	<b>1'30.939</b>			159,258	44
2	<b>28 G. VAN STRAALEN</b>	NED	EAB Racing Team	Yamaha YZF R6		1'33.276	<b>1'31.163</b>	<b>1'31.163</b>	0.224	0.224	158,867	44
3	<b>11 N. BULEGA</b>	ITA	Aruba.it Racing WorldSSP Team	Ducati Panigale V2		1'32.066	<b>1'31.164</b>	<b>1'31.164</b>	0.225	0.001	158,865	36
4	<b>16 J. CLUZEL</b>	FRA	GMT94 Yamaha	Yamaha YZF R6		1'31.520	<b>1'31.214</b>	<b>1'31.214</b>	0.275	0.050	158,778	43
5	<b>3 R. DE ROSA</b>	ITA	Orelac Racing Verdatura WorldSSP	Ducati Panigale V2		1'31.499	<b>1'31.262</b>	<b>1'31.262</b>	0.323	0.048	158,695	42
6	<b>64 F. CARICASULO</b>	ITA	Althea Racing	Ducati Panigale V2		1'31.681	<b>1'31.339</b>	<b>1'31.339</b>	0.400	0.077	158,561	42
7	<b>7 L. BALDASSARRI</b>	ITA	Evan Bros.WorldSSP Yamaha Team	Yamaha YZF R6		1'31.649	<b>1'31.388</b>	<b>1'31.388</b>	0.449	0.049	158,476	45
8	<b>61 C. ONCU</b>	TUR	Kawasaki Puccetti Racing	Kawasaki ZX-6R		1'32.533	<b>1'31.568</b>	<b>1'31.568</b>	0.629	0.180	158,164	43
9	<b>38 H. SODMER</b>	EST	Dynavolt Triumph	Triumph Street Triple RS		1'31.657	<b>1'31.580</b>	<b>1'31.580</b>	0.641	0.012	158,144	42
10	<b>62 S. MANZI</b>	ITA	Dynavolt Triumph	Triumph Street Triple RS		1'32.841	<b>1'31.699</b>	<b>1'31.699</b>	0.760	0.119	157,938	43
11	<b>69 T. BOOTH-AMOS</b>	GBR	Prodina Racing WorldSSP	Kawasaki ZX-6R	*	1'32.806	<b>1'31.748</b>	<b>1'31.748</b>	0.809	0.049	157,854	25
12	<b>56 P. SEBESTYEN</b>	HUN	Evan Bros.WorldSSP Yamaha Team	Yamaha YZF R6		1'32.674	<b>1'31.866</b>	<b>1'31.866</b>	0.927	0.118	157,651	47
13	<b>10 U. ORRADRE</b>	ESP	MS Racing Yamaha WorldSSP	Yamaha YZF R6		1'32.700	<b>1'31.948</b>	<b>1'31.948</b>	1.009	0.082	157,511	43
14	<b>17 K. SMITH</b>	GBR	VFT Racing	Yamaha YZF R6		<b>1'31.973</b>	1'32.155	<b>1'31.973</b>	1.034	0.025	157,468	32
15	<b>25 M. BRENNER</b>	SUI	VFT Racing	Yamaha YZF R6	*	1'33.029	<b>1'32.154</b>	<b>1'32.154</b>	1.215	0.181	157,159	42
16	<b>54 B. SOFUOGLU</b>	TUR	MV Agusta Reparto Corse	MV Agusta F3 800 RR	*	1'32.867	<b>1'32.216</b>	<b>1'32.216</b>	1.277	0.062	157,053	47
17	<b>99 A. HUERTAS</b>	ESP	MTM Kawasaki	Kawasaki ZX-6R		1'33.053	<b>1'32.246</b>	<b>1'32.246</b>	1.307	0.030	157,002	34
18	<b>55 Y. MONTELLA</b>	ITA	Kawasaki Puccetti Racing	Kawasaki ZX-6R		1'32.676	<b>1'32.276</b>	<b>1'32.276</b>	1.337	0.030	156,951	41
19	<b>94 A. VERDOIA</b>	FRA	GMT94 Yamaha	Yamaha YZF R6		<b>1'32.280</b>	1'32.553	<b>1'32.280</b>	1.341	0.004	156,944	39
20	<b>23 I. VINALES</b>	ESP	D34G Racing	Ducati Panigale V2	*	1'33.612	<b>1'32.336</b>	<b>1'32.336</b>	1.397	0.056	156,849	41
21	<b>4 H. TRUELOVE</b>	GBR	ColinAppleyard/Macadam-Yamaha	Yamaha YZF R6		1'32.811	<b>1'32.404</b>	<b>1'32.404</b>	1.465	0.068	156,733	37
22	<b>21 B. CURRIE</b>	AUS	Motozoo Racing by Puccetti	Kawasaki ZX-6R		1'32.954	<b>1'32.593</b>	<b>1'32.593</b>	1.654	0.189	156,414	30
23	<b>27 M. CASADEI</b>	ITA	MV Agusta Reparto Corse	MV Agusta F3 800 RR		1'33.454	<b>1'32.779</b>	<b>1'32.779</b>	1.840	0.186	156,100	41
24	<b>32 D. BAYLISS</b>	AUS	BARNI Spark Racing Team	Ducati Panigale V2		<b>1'32.894</b>	<b>1'32.894</b>	<b>1'32.894</b>	1.955	0.115	155,907	21
25	<b>9 S. JESPERSEN</b>	DEN	CM Racing	Ducati Panigale V2		<b>1'32.958</b>	<b>1'32.958</b>	<b>1'32.958</b>	2.019	0.064	155,799	18
26	<b>24 L. TACCINI</b>	ITA	Ten Kate Racing Yamaha	Yamaha YZF R6		1'34.280	<b>1'33.036</b>	<b>1'33.036</b>	2.097	0.078	155,669	41
27	<b>50 D. VOSTATEK</b>	CZE	MS Racing Yamaha WorldSSP	Yamaha YZF R6		1'33.920	<b>1'33.199</b>	<b>1'33.199</b>	2.260	0.163	155,397	44
28	<b>22 F. FULIGNI</b>	ITA	D34G Racing	Ducati Panigale V2	*	1'34.230	<b>1'33.640</b>	<b>1'33.640</b>	2.701	0.441	154,665	43
29	<b>73 M. KOFLER</b>	AUT	CM Racing	Ducati Panigale V2		1'34.592	<b>1'33.881</b>	<b>1'33.881</b>	2.942	0.241	154,268	37
30	<b>6 J. BUIS</b>	NED	Motozoo Racing by Puccetti	Kawasaki ZX-6R	*	1'35.307	<b>1'34.444</b>	<b>1'34.444</b>	3.505	0.563	153,348	42
31	<b>36 S. KROEZE</b>	NED	Kallio Racing	Yamaha YZF R6	*	1'34.948	<b>1'34.763</b>	<b>1'34.763</b>	3.824	0.319	152,832	44
32	<b>52 P. HOBELSBERGER</b>	GER	Kallio Racing	Yamaha YZF R6		<b>1'35.718</b>		<b>1'35.718</b>	4.779	0.955	151,307	7

\* WorldSSP Challenge

15/07/2022

These data/results cannot be reproduced, stored and/or transmitted in whole or in part by any manner of electronic, mechanical, photocopying, recording, broadcasting or otherwise now known or herein after developed without the previous express consent by the copyright owner, except for reproduction in daily press and regular printed publications on sale to the public within 60 days of the event related to those data/results and always provided that copyright symbol appears together as follows below.

© DORNA WSBK ORGANIZATION Srl 2022



Donington Park 4.023 m

**Prosecco DOC - UK Round, 15-17 July 2022**  
**Best Sectors & Speed Free Practice 2nd Session**

**BEST LAP**

1	77	D. AEGERTER	Yamaha YZF R6	1'30.939
2	28	G. VAN STRAALLEN	Yamaha YZF R6	1'31.163
3	11	N. BULEGA	Ducati Panigale V2	1'31.164
4	16	J. CLUZEL	Yamaha YZF R6	1'31.214
5	3	R. DE ROSA	Ducati Panigale V2	1'31.262
6	64	F. CARICASULO	Ducati Panigale V2	1'31.339
7	7	L. BALDASSARRI	Yamaha YZF R6	1'31.388
8	61	C. ONCU	Kawasaki ZX-6R	1'31.568
9	38	H. SOOMER	Triumph Street Triple RS	1'31.580
10	62	S. MANZI	Triumph Street Triple RS	1'31.699
11	69	T. BOOTH-AMOS	Kawasaki ZX-6R	1'31.748
12	56	P. SEBESTYEN	Yamaha YZF R6	1'31.866
13	10	U. ORRADRE	Yamaha YZF R6	1'31.948
14	25	M. BRENNER	Yamaha YZF R6	1'32.154
15	17	K. SMITH	Yamaha YZF R6	1'32.155
16	54	B. SOFUOGLU	MV Agusta F3 800 RR	1'32.216
17	99	A. HUERTAS	Kawasaki ZX-6R	1'32.246
18	55	Y. MONTELLA	Kawasaki ZX-6R	1'32.276
19	23	I. VINALES	Ducati Panigale V2	1'32.336
20	4	H. TRUELOVE	Yamaha YZF R6	1'32.404
21	94	A. VERDOIA	Yamaha YZF R6	1'32.553
22	21	B. CURRIE	Kawasaki ZX-6R	1'32.593
23	27	M. CASADEI	MV Agusta F3 800 RR	1'32.779
24	24	L. TACCINI	Yamaha YZF R6	1'33.036
25	50	D. VOSTATEK	Yamaha YZF R6	1'33.199
26	22	F. FULIGNI	Ducati Panigale V2	1'33.640
27	73	M. KOFLER	Ducati Panigale V2	1'33.881
28	6	J. BUIS	Kawasaki ZX-6R	1'34.444
29	36	S. KROEZE	Yamaha YZF R6	1'34.763
30	9	S. JESPERSEN	Ducati Panigale V2	
31	32	D. BAYLISS	Ducati Panigale V2	
32	52	P. HOBELSBERGER	Yamaha YZF R6	

**SPEED**

1	62	S. MANZI	Triumph Street Triple RS	241,3
2	54	B. SOFUOGLU	MV Agusta F3 800 RR	240,8
3	50	D. VOSTATEK	Yamaha YZF R6	238,1
4	69	T. BOOTH-AMOS	Kawasaki ZX-6R	238,1
5	77	D. AEGERTER	Yamaha YZF R6	238,1
6	11	N. BULEGA	Ducati Panigale V2	238,1
7	27	M. CASADEI	MV Agusta F3 800 RR	237,1
8	24	L. TACCINI	Yamaha YZF R6	237,1
9	64	F. CARICASULO	Ducati Panigale V2	237,1
10	7	L. BALDASSARRI	Yamaha YZF R6	237,1
11	16	J. CLUZEL	Yamaha YZF R6	237,1
12	3	R. DE ROSA	Ducati Panigale V2	236,1
13	28	G. VAN STRAALLEN	Yamaha YZF R6	236,1
14	55	Y. MONTELLA	Kawasaki ZX-6R	236,1
15	23	I. VINALES	Ducati Panigale V2	236,1
16	61	C. ONCU	Kawasaki ZX-6R	235,0
17	6	J. BUIS	Kawasaki ZX-6R	235,0
18	38	H. SOOMER	Triumph Street Triple RS	234,5
19	56	P. SEBESTYEN	Yamaha YZF R6	234,5
20	22	F. FULIGNI	Ducati Panigale V2	234,0
21	99	A. HUERTAS	Kawasaki ZX-6R	233,5
22	10	U. ORRADRE	Yamaha YZF R6	233,5
23	73	M. KOFLER	Ducati Panigale V2	233,5
24	36	S. KROEZE	Yamaha YZF R6	233,0
25	21	B. CURRIE	Kawasaki ZX-6R	232,0
26	25	M. BRENNER	Yamaha YZF R6	232,0
27	32	D. BAYLISS	Ducati Panigale V2	231,5
28	17	K. SMITH	Yamaha YZF R6	231,0
29	9	S. JESPERSEN	Ducati Panigale V2	230,5
30	4	H. TRUELOVE	Yamaha YZF R6	229,5
31	94	A. VERDOIA	Yamaha YZF R6	229,5

**SEG. 1**

1	77	D. AEGERTER	19.313
2	16	J. CLUZEL	19.444
3	7	L. BALDASSARRI	19.460
4	11	N. BULEGA	19.476
5	69	T. BOOTH-AMOS	19.528
6	38	H. SOOMER	19.555
7	17	K. SMITH	19.577
8	61	C. ONCU	19.581
9	28	G. VAN STRAALLEN	19.602
10	3	R. DE ROSA	19.615
11	54	B. SOFUOGLU	19.657
12	56	P. SEBESTYEN	19.667
13	62	S. MANZI	19.669
14	25	M. BRENNER	19.675
15	55	Y. MONTELLA	19.695
16	24	L. TACCINI	19.713
17	10	U. ORRADRE	19.717
18	64	F. CARICASULO	19.754
19	94	A. VERDOIA	19.756
20	99	A. HUERTAS	19.761
21	21	B. CURRIE	19.785
22	23	I. VINALES	19.801
23	4	H. TRUELOVE	19.847
24	50	D. VOSTATEK	19.876
25	27	M. CASADEI	19.884
26	22	F. FULIGNI	19.977
27	73	M. KOFLER	20.028
28	6	J. BUIS	20.045
29	36	S. KROEZE	20.066
30	9	S. JESPERSEN	20.330

**SEG. 2**

1	3	R. DE ROSA	24.573
2	16	J. CLUZEL	24.625
3	77	D. AEGERTER	24.664
4	38	H. SOOMER	24.680
5	28	G. VAN STRAALLEN	24.693
6	11	N. BULEGA	24.740
7	61	C. ONCU	24.805
8	7	L. BALDASSARRI	24.818
9	69	T. BOOTH-AMOS	24.859
10	56	P. SEBESTYEN	24.862
11	99	A. HUERTAS	24.863
12	17	K. SMITH	24.864
13	62	S. MANZI	24.875
14	64	F. CARICASULO	24.883
15	4	H. TRUELOVE	24.931
16	25	M. BRENNER	24.934
17	10	U. ORRADRE	24.945
18	55	Y. MONTELLA	24.947
19	21	B. CURRIE	25.046
20	94	A. VERDOIA	25.053
21	23	I. VINALES	25.116
22	54	B. SOFUOGLU	25.209
23	27	M. CASADEI	25.249
24	50	D. VOSTATEK	25.261
25	73	M. KOFLER	25.323
26	22	F. FULIGNI	25.348
27	24	L. TACCINI	25.403
28	9	S. JESPERSEN	25.532
29	6	J. BUIS	25.601
30	36	S. KROEZE	25.790
31	32	D. BAYLISS	26.826

**SEG. 3**

1	64	F. CARICASULO	23.038
2	28	G. VAN STRAALLEN	23.101
3	61	C. ONCU	23.105
4	77	D. AEGERTER	23.163
5	11	N. BULEGA	23.235
6	3	R. DE ROSA	23.242
7	69	T. BOOTH-AMOS	23.252
8	56	P. SEBESTYEN	23.259
9	62	S. MANZI	23.260
10	17	K. SMITH	23.291
11	7	L. BALDASSARRI	23.307
12	16	J. CLUZEL	23.339
13	23	I. VINALES	23.343
14	99	A. HUERTAS	23.354
15	38	H. SOOMER	23.368
16	27	M. CASADEI	23.392
17	54	B. SOFUOGLU	23.392
18	10	U. ORRADRE	23.419
19	4	H. TRUELOVE	23.423
20	25	M. BRENNER	23.433
21	94	A. VERDOIA	23.439
22	55	Y. MONTELLA	23.465
23	21	B. CURRIE	23.496
24	24	L. TACCINI	23.566
25	50	D. VOSTATEK	23.643
26	22	F. FULIGNI	23.799
27	6	J. BUIS	23.803
28	73	M. KOFLER	23.811
29	9	S. JESPERSEN	23.962
30	36	S. KROEZE	24.031
31	32	D. BAYLISS	24.485

**SEG. 4**

1	64	F. CARICASULO	23.544
2	77	D. AEGERTER	23.587
3	38	H. SOOMER	23.604
4	7	L. BALDASSARRI	23.618
5	16	J. CLUZEL	23.623
6	11	N. BULEGA	23.673
7	10	U. ORRADRE	23.675
8	3	R. DE ROSA	23.693
9	28	G. VAN STRAALLEN	23.696
10	62	S. MANZI	23.751
11	54	B. SOFUOGLU	23.787
12	25	M. BRENNER	23.810
13	69	T. BOOTH-AMOS	23.885
14	61	C. ONCU	23.885
15	23	I. VINALES	23.958
16	17	K. SMITH	23.978
17	24	L. TACCINI	23.984
18	55	Y. MONTELLA	23.998
19	27	M. CASADEI	24.026
20	94	A. VERDOIA	24.040
21	56	P. SEBESTYEN	24.040
22	99	A. HUERTAS	24.069
23	21	B. CURRIE	24.116
24	4	H. TRUELOVE	24.203
25	50	D. VOSTATEK	24.231
26	22	F. FULIGNI	24.244
27	73	M. KOFLER	24.453
28	36	S. KROEZE	24.540
29	6	J. BUIS	24.559
30	9	S. JESPERSEN	24.704

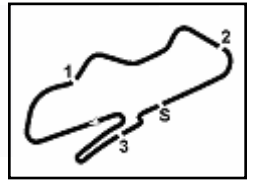
15/07/2022

These data/results cannot be reproduced, stored and/or transmitted in whole or in part by any manner of electronic, mechanical, photocopying, recording, broadcasting or otherwise now known or herein after developed without the previous express consent by the copyright owner, except for reproduction in daily press and regular printed publications on sale to the public within 60 days of the event related to those data/results and always provided that copyright symbol appears together as follows below.

© DORNA WSBK ORGANIZATION Srl 2022

FICR PERUGIA TIMING





Donington Park 4.023 m

**Prosecco DOC - UK Round, 15-17 July 2022**  
**Ideal Times Free Practice 2nd Session**

No.	Rider	Nat	Bike	Seg. 1	Seg. 2	Seg. 3	Seg. 4	Ideal Time		
				Diff. 1	Diff. 2	Diff. 3	Diff. 4	Best Lap	Pos.	Diff.
1	<b>77 D. AEGERTER</b>	SUI	Yamaha YZF R6	19.313	24.664	23.163 +0.127	23.587 +0.085	<b>1'30.727</b> 1'30.939	1	0.212
2	<b>16 J. CLUZEL</b>	FRA	Yamaha YZF R6	19.444 +0.112	24.625	23.339 +0.002	23.623 +0.069	<b>1'31.031</b> 1'31.214	4	0.183
3	<b>28 G. VAN STRAALLEN</b>	NED	Yamaha YZF R6	19.602 +0.071	24.693	23.101	23.696	<b>1'31.092</b> 1'31.163	2	0.071
4	<b>3 R. DE ROSA</b>	ITA	Ducati Panigale V2	19.615 +0.038	24.573 +0.101	23.242	23.693	<b>1'31.123</b> 1'31.262	5	0.139
5	<b>11 N. BULEGA</b>	ITA	Ducati Panigale V2	19.476 +0.040	24.740	23.235	23.673	<b>1'31.124</b> 1'31.164	3	0.040
6	<b>7 L. BALDASSARRI</b>	ITA	Yamaha YZF R6	19.460 +0.105	24.818 +0.036	23.307 +0.017	23.618 +0.027	<b>1'31.203</b> 1'31.388	7	0.185
7	<b>38 H. SOOMER</b>	EST	Triumph Street Triple RS	19.555 +0.323	24.680 +0.050	23.368	23.604	<b>1'31.207</b> 1'31.580	9	0.373
8	<b>64 F. CARICASULO</b>	ITA	Ducati Panigale V2	19.754 +0.112	24.883 +0.008	23.038	23.544	<b>1'31.219</b> 1'31.339	6	0.120
9	<b>61 C. ONCU</b>	TUR	Kawasaki ZX-6R	19.581 +0.086	24.805 +0.043	23.105	23.885 +0.063	<b>1'31.376</b> 1'31.568	8	0.192
10	<b>69 T. BOOTH-AMOS</b>	GBR	Kawasaki ZX-6R	19.528	24.859 +0.127	23.252	23.885 +0.097	<b>1'31.524</b> 1'31.748	11	0.224
11	<b>62 S. MANZI</b>	ITA	Triumph Street Triple RS	19.669 +0.085	24.875 +0.059	23.260	23.751	<b>1'31.555</b> 1'31.699	10	0.144
12	<b>17 K. SMITH</b>	GBR	Yamaha YZF R6	19.577 +0.192	24.864 +0.182	23.291	23.978 +0.071	<b>1'31.710</b> 1'32.155	15	0.445
13	<b>10 U. ORRADRE</b>	ESP	Yamaha YZF R6	19.717	24.945 +0.125	23.419 +0.067	23.675	<b>1'31.756</b> 1'31.948	13	0.192
14	<b>56 P. SEBESTYEN</b>	HUN	Yamaha YZF R6	19.667 +0.038	24.862	23.259	24.040	<b>1'31.828</b> 1'31.866	12	0.038
15	<b>25 M. BRENNER</b>	SUI	Yamaha YZF R6	19.675 +0.060	24.934 +0.071	23.433 +0.017	23.810 +0.154	<b>1'31.852</b> 1'32.154	14	0.302
16	<b>54 B. SOFUOGLU</b>	TUR	MV Agusta F3 800 RR	19.657 +0.166	25.209	23.392	23.787 +0.005	<b>1'32.045</b> 1'32.216	16	0.171
17	<b>99 A. HUERTAS</b>	ESP	Kawasaki ZX-6R	19.761 +0.038	24.863 +0.131	23.354 +0.030	24.069	<b>1'32.047</b> 1'32.246	17	0.199
18	<b>55 Y. MONTELLA</b>	ITA	Kawasaki ZX-6R	19.695	24.947 +0.136	23.465 +0.035	23.998	<b>1'32.105</b> 1'32.276	18	0.171
19	<b>23 I. VINALES</b>	ESP	Ducati Panigale V2	19.801 +0.118	25.116	23.343	23.958	<b>1'32.218</b> 1'32.336	19	0.118
20	<b>94 A. VERDOIA</b>	FRA	Yamaha YZF R6	19.756	25.053 +0.140	23.439 +0.125	24.040	<b>1'32.288</b> 1'32.553	21	0.265
21	<b>4 H. TRUELOVE</b>	GBR	Yamaha YZF R6	19.847	24.931	23.423	24.203	<b>1'32.404</b> 1'32.404	20	
22	<b>21 B. CURRIE</b>	AUS	Kawasaki ZX-6R	19.785	25.046 +0.066	23.496 +0.051	24.116 +0.033	<b>1'32.443</b> 1'32.593	22	0.150
23	<b>27 M. CASADEI</b>	ITA	MV Agusta F3 800 RR	19.884 +0.159	25.249 +0.069	23.392	24.026	<b>1'32.551</b> 1'32.779	23	0.228
24	<b>24 L. TACCINI</b>	ITA	Yamaha YZF R6	19.713 +0.045	25.403 +0.034	23.566 +0.193	23.984 +0.098	<b>1'32.666</b> 1'33.036	24	0.370
25	<b>50 O. VOSTATEK</b>	CZE	Yamaha YZF R6	19.876 +0.030	25.261 +0.122	23.643 +0.013	24.231 +0.023	<b>1'33.011</b> 1'33.199	25	0.188
26	<b>22 F. FULIGNI</b>	ITA	Ducati Panigale V2	19.977 +0.105	25.348 +0.040	23.799 +0.081	24.244 +0.046	<b>1'33.368</b> 1'33.640	26	0.272
27	<b>73 M. KOFLER</b>	AUT	Ducati Panigale V2	20.028 +0.079	25.323 +0.091	23.811 +0.096	24.453	<b>1'33.615</b> 1'33.881	27	0.266
28	<b>6 J. BUIS</b>	NED	Kawasaki ZX-6R	20.045 +0.218	25.601 +0.163	23.803 +0.029	24.559 +0.026	<b>1'34.008</b> 1'34.444	28	0.436
29	<b>36 S. KROEZE</b>	NED	Yamaha YZF R6	20.066 +0.084	25.790 +0.007	24.031	24.540 +0.245	<b>1'34.427</b> 1'34.763	29	0.336
	<b>9 S. JESPERSEN</b>	DEN	Ducati Panigale V2							
	<b>32 O. BAYLISS</b>	AUS	Ducati Panigale V2							
	<b>52 P. HOBELBERGER</b>	GER	Yamaha YZF R6							
<b>Overall Ideal Time</b>				19.313	24.573	23.038	23.544	<b>1'30.468</b>		

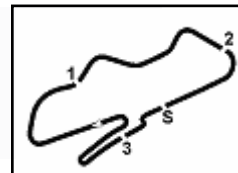
15/07/2022

These data/results cannot be reproduced, stored and/or transmitted in whole or in part by any manner of electronic, mechanical, photocopying, recording, broadcasting or otherwise now known or herein after developed without the previous express consent by the copyright owner, except for reproduction in daily press and regular printed publications on sale to the public within 60 days of the event related to those data/results and always provided that copyright symbol appears together as follows below.

© DORNA WSBK ORGANIZATION Srl 2022

**FIGR PERUGIA TIMING**



**Prosecco DOC - UK Round, 15-17 July 2022**  
**Chronological Analysis Free Practice 2nd Session**

1° 77 D. AEGERTER [1'30.939]							
Lap	Seg1	Seg2	Seg3	Seg4	Lap Time	km/h	Local Time
1		26.638	24.867	24.593		228,1	16:02'45.976
2	19.833	25.118	23.435	24.188	1'32.574	233,0	16:04'18.550
3	19.648	25.011	23.465	23.817	1'31.941	231,5	16:05'50.491
4	19.523	24.825	23.640	23.876	1'31.864	231,0	16:07'22.355
5	19.552	24.886	23.290	23.759	1'31.487	233,0	16:08'53.842
6	19.614	24.833	23.337	23.771	1'31.555	234,5	16:10'25.397
7	19.759	24.991	23.900	23.790	1'32.440	231,0	16:11'57.837
8	19.696	24.938	23.499	23.884	1'32.017	232,0	16:13'29.854
9	19.496	24.800	23.774	23.744	1'31.814	233,5	16:15'01.668
10	19.424	25.278	23.357	23.876	1'31.935	233,0	16:16'33.603
11	19.525	24.909	23.581	23.704	1'31.719	232,0	16:18'05.322
12	19.457	24.828	23.418	<b>23.587</b>	1'31.290	234,5	16:19'36.612
13	19.444	24.891	23.288	23.775	1'31.398	236,1	16:21'08.010
14	19.517	25.321	23.683	23.745	1'32.266	<b>238,1</b>	16:22'40.276
15	19.476	24.982	23.416	23.796	1'31.670	233,5	16:24'11.946
16	<b>19.313</b>	<b>24.664</b>	23.290	23.672	<b>1'30.939</b>	233,5	16:25'42.885
17	19.567	25.121	27.770	29.487	1'41.945CP	231,0	16:27'24.830
18	9'25.458	25.749	23.576	23.969	10'38.752P	232,5	16:38'03.582
19	19.381	24.785	23.417	23.713	1'31.296C	237,6	16:39'34.878
20	19.353	24.787	23.320	23.856	1'31.316C	231,5	16:41'06.194
21	19.371	24.796	<b>23.163</b>	23.818	1'31.148	234,0	16:42'37.342
22	19.362	24.842	23.471	23.765	1'31.440	230,5	16:44'08.782
23	19.458	24.866	23.301	23.753	1'31.378	233,0	16:45'40.160

2° 28 G. VAN STRAALEN [1'31.163]							
Lap	Seg1	Seg2	Seg3	Seg4	Lap Time	km/h	Local Time
1		26.961	25.394	25.427		<b>236,1</b>	16:01'48.196
2	20.727	25.529	24.100	39.293	1'49.649P	234,0	16:03'37.845
3	5'00.270	26.145	23.987	24.693	6'15.095P	230,5	16:09'52.940
4	20.250	25.374	23.540	24.371	1'33.535	229,5	16:11'26.475
5	20.108	24.929	23.318	24.061	1'32.416	232,0	16:12'58.891
6	19.929	24.918	23.270	23.764	1'31.881	228,5	16:14'30.772
7	20.180	25.066	23.333	24.241	1'32.820	232,5	16:16'03.592
8	19.775	24.781	23.306	23.933	1'31.795	229,5	16:17'35.387
9	20.076	25.205	23.869	24.312	1'33.462	228,1	16:19'08.849
10	19.776	24.867	23.341	24.001	1'31.985	230,0	16:20'40.834
11	19.729	25.010	23.497	24.135	1'32.371	230,5	16:22'13.205
12	19.718	24.935	23.474	25.391	1'33.518	226,6	16:23'46.723
13	19.798	25.043	23.510	23.892	1'32.243	229,5	16:25'18.966
14	19.678	24.986	23.545	23.909	1'32.118	229,0	16:26'51.084
15	19.877	25.131	23.490	24.158	1'32.656	229,0	16:28'23.740
16	20.467	25.046	23.548	23.873	1'32.934	226,6	16:29'56.674
17	19.833	25.323	23.549	30.192	1'38.897P	228,1	16:31'35.571
18	4'27.037	25.935	23.623	24.170	5'40.765P	228,5	16:37'16.336
19	<b>19.602</b>	24.801	23.136	23.915	1'31.454	229,0	16:38'47.790
20	19.656	26.238	24.061	23.842	1'33.797C	225,2	16:40'21.587
21	19.718	25.749	23.529	23.880	1'32.876	231,5	16:41'54.463
22	19.700	25.227	23.420	23.760	1'32.107	228,5	16:43'26.570
23	19.718	24.874	23.279	23.708	1'31.579	229,0	16:44'58.149
24	19.673	<b>24.693</b>	<b>23.101</b>	<b>23.696</b>	<b>1'31.163</b>	231,5	16:46'29.312

3° 11 N. BULEGA [1'31.164]							
Lap	Seg1	Seg2	Seg3	Seg4	Lap Time	km/h	Local Time
1		27.029	24.509	25.244		235,5	16:02'10.936
2	19.862	25.032	23.579	24.238	1'32.711	232,5	16:03'43.647
3	19.915	24.801	23.557	24.192	1'32.465	234,0	16:05'16.112
4	19.997	24.971	23.737	24.340	1'33.045C	233,5	16:06'49.157
5	19.678	24.967	23.436	24.177	1'32.258	234,5	16:08'21.415
6	19.768	24.906	23.463	24.124	1'32.261	237,1	16:09'53.676
7	22.403	34.399	25.178	29.967	1'51.947P	225,2	16:11'45.623
8	10'19.488	25.672	23.767	24.172	11'33.099P	232,5	16:23'18.722

4° 16 J. CLUZEL [1'31.214]								
Lap	Seg1	Seg2	Seg3	Seg4	Lap Time	km/h	Local Time	
1			26.902	24.928	24.830		224,7	16:03'08.673
2	19.832	25.065	23.735	23.970	1'32.602	231,5	16:04'41.275	
3	19.671	24.974	23.591	24.036	1'32.272	232,5	16:06'13.547	
4	19.835	24.916	23.619	23.959	1'32.329	231,0	16:07'45.876	
5	19.652	25.040	23.509	27.467	1'35.668	232,5	16:09'21.544	
6	19.523	24.815	23.612	23.865	1'31.815	233,0	16:10'53.359	
7	19.651	24.907	23.537	23.762	1'31.857	231,5	16:12'25.216	
8	19.940	24.993	23.504	23.915	1'32.352	231,0	16:13'57.568	
9	19.558	24.992	23.912	24.394	1'32.856	234,0	16:15'30.424	
10	19.591	24.808	23.633	23.797	1'31.829	232,5	16:17'02.253	
11	19.614	24.844	23.502	23.847	1'31.807	235,0	16:18'34.060	
12	20.247	25.721	24.399	28.900	1'39.267P	227,1	16:20'13.327	
13	6'21.368	26.619	24.823	24.372	7'37.182P	221,5	16:27'50.509	
14	19.716	24.771	27.482	31.091	1'43.060	221,0	16:29'33.569	
15	19.652	29.926	24.208	24.044	1'37.830	229,0	16:31'11.399	
16	<b>19.444</b>	24.669	27.351	24.034	1'35.498	211,9	16:32'46.897	
17	19.479	24.735	<b>23.339</b>	23.862	1'31.415	232,5	16:34'18.312	
18	19.556	<b>24.625</b>	23.341	23.692	<b>1'31.214</b>	235,0	16:35'49.526	
19	20.969	26.388	24.291	29.268	1'40.916C	231,5	16:37'30.442	
20	19.523	26.218	25.926	24.283	1'35.950C	193,3	16:39'06.392	
21	19.495	26.183	23.931	23.865	1'33.474C	232,5	16:40'39.866	
22	19.461	24.651	23.428	30.320	1'37.860	235,5	16:42'17.726	
23	21.807	24.963	24.279	23.811	1'34.860	232,0	16:43'52.586	
24	19.455	24.681	23.530	<b>23.623</b>	1'31.289	<b>237,1</b>	16:45'23.875	

5° 3 R. DE ROSA [1'31.262]								
Lap	Seg1	Seg2	Seg3	Seg4	Lap Time	km/h	Local Time	
1			26.994	24.536	25.580		229,5	16:03'11.874
2	20.189	25.079	23.868	24.157	1'33.293	232,0	16:04'45.167	
3	19.793	24.626	23.392	23.913	1'31.724	233,0	16:06'16.891	
4	19.659	24.816	23.269	23.953	1'31.697	234,5	16:07'48.588	
5	19.701	24.716	23.300	23.911	1'31.628	235,5	16:09'20.216	
6	19.645	24.674	23.345	23.761	1'31.425	231,5	16:10'51.641	
7	19.733	24.828	23.373	23.960	1'31.894	233,5	16:12'23.535	
8	19.793	24.834	23.426	23.899	1'31.952	232,5	16:13'55.487	
9	19.838	24.816	23.379	23.920	1'31.953	234,0	16:15'27.440	
10	19.703	24.830	23.295	23.831	1'31.659	234,0	16:16'59.099	
11	19.741	25.759	23.899	23.991	1'33.390	229,5	16:18'32.489	
12	<b>19.615</b>	24.887	23.455	23.959	1'31.916	234,0	16:20'04.405	
13	19.844	25.039	23.376	23.899	1'32.158	234,5	16:21'36.563	
14	19.831	24.931	23.263	24.464	1'32.489	<b>236,1</b>	16:23'09.052	
15	19.689	24.901	23.438	23.905	1'31.933	232,5	16:24'40.985	
16	19.777	24.944	23.500	23.761	1'31.982	234,5	16:26'12.967	
17	22.332	26.825	24.942	31.379	1'45.478P	214,9	16:27'58.445	
18	9'16.716	28.821	26.763	25.002	10'37.302P	200,4	16:38'35.747	
19	19.706	25.041	23.525	23.932	1'32.204C	233,0	16:40'07.951	
20	19.653	24.674	<b>23.242</b>	<b>23.693</b>	<b>1'31.262</b>	234,5	16:41'39.213	
21	19.643	<b>24.573</b>	23.314	23.856	1'31.386	235,0	16:43'10.599	
22	19.718	24.815	23.434	23.857	1'31.824	233,0	16:44'42.423	
23	19.772	24.929	23.296	23.817	1'31.814	234,0	16:46'14.237	

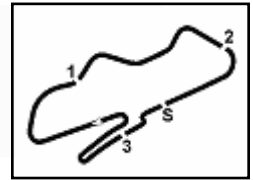
15/07/2022

P = Pits In/Out - C = Lap Time Cancelled

These data/results cannot be reproduced, stored and/or transmitted in whole or in part by any manner of electronic, mechanical, photocopying, recording, broadcasting or otherwise now known or herein after developed without the previous express consent by the copyright owner, except for reproduction in daily press and regular printed publications on sale to the public within 60 days of the event related to those data/results and always provided that copyright symbol appears together as follows below.

© DORNA WSBK ORGANIZATION Srl 2022





**Prosecco DOC - UK Round, 15-17 July 2022**  
**Chronological Analysis Free Practice 2nd Session**

**6°** **64 F. CARICASULO [1'31.339]**

Lap	Seg.1	Seg.2	Seg.3	Seg.4	Lap Time	km/h	Local Time
1		26.628	24.058	24.814		234,0	16:01'44.623
2	20.353	25.463	23.744	24.465	1'34.025	234,0	16:03'18.648
3	20.179	25.124	23.402	23.951	1'32.656	235,5	16:04'51.304
4	19.902	24.920	23.264	24.509	1'32.595	233,5	16:06'23.899
5	19.761	25.146	23.208	24.207	1'32.322	236,6	16:07'56.221
6	20.044	25.091	23.059	23.847	1'32.041	236,6	16:09'28.262
7	19.758	24.930	23.149	23.866	1'31.703	234,5	16:10'59.965
8	20.000	25.032	24.193	31.221	1'40.446P	232,5	16:12'40.411
9	9'22.027	25.626	23.684	24.449	10'35.786P	235,0	16:23'16.197
10	19.870	25.086	23.571	23.947	1'32.474	234,5	16:24'48.671
11	19.915	25.031	23.146	24.130	1'32.222	235,0	16:26'20.893
12	20.474	25.482	23.736	29.522	1'39.214P	236,1	16:28'00.107
13	3'53.811	26.470	23.493	23.927	5'07.701P	232,0	16:33'07.808
14	19.959	25.160	23.257	23.621	1'31.997	234,5	16:34'39.805
15	19.866	24.891	<b>23.038</b>	<b>23.544</b>	<b>1'31.339</b>	236,6	16:36'11.144
16	19.866	25.485	23.259	23.887	1'32.497	234,0	16:37'43.641
17	19.964	24.947	23.120	23.919	1'31.950	234,0	16:39'15.591
18	19.759	25.051	23.130	23.604	1'31.544C	235,0	16:40'47.135
19	19.773	24.894	23.364	23.891	1'31.922	<b>237,1</b>	16:42'19.057
20	19.917	24.987	23.212	23.770	1'31.886	236,6	16:43'50.943
21	<b>19.754</b>	<b>24.883</b>	23.478	24.586	1'32.701	236,6	16:45'23.644

**7°** **7 L. BALDASSARRI [1'31.388]**

Lap	Seg.1	Seg.2	Seg.3	Seg.4	Lap Time	km/h	Local Time
1		27.070	25.139	24.943		225,2	16:02'57.172
2	20.094	25.792	23.931	24.238	1'34.055	230,0	16:04'31.227
3	19.919	25.427	23.852	24.074	1'33.272	231,0	16:06'04.499
4	19.881	25.174	25.409	23.906	1'34.370	229,0	16:07'38.869
5	19.880	25.121	23.532	24.390	1'32.923	232,0	16:09'11.792
6	19.796	24.946	23.828	23.756	1'32.326	231,0	16:10'44.118
7	19.691	25.024	23.500	23.860	1'32.075	231,5	16:12'16.193
8	19.870	25.166	23.686	23.791	1'32.513	230,5	16:13'48.706
9	19.769	25.265	23.542	23.813	1'32.389	232,5	16:15'21.095
10	21.441	26.610	24.542	31.874	1'44.467P	224,7	16:17'05.562
11	11'15.008	27.148	24.041	24.181	12'30.378P	226,6	16:29'35.940
12	19.690	25.072	23.480	28.649	1'36.891P	232,0	16:31'12.831
13	35.274	25.900	23.995	23.938	1'49.107P	230,5	16:33'01.938
14	19.591	24.918	24.108	23.840	1'32.457	230,5	16:34'34.395
15	19.777	25.022	23.597	23.848	1'32.244	233,0	16:36'06.639
16	19.704	24.967	23.402	23.649	1'31.722	234,0	16:37'38.361
17	19.649	26.618	24.437	24.326	1'35.030	228,5	16:39'13.391
18	19.849	25.109	23.746	23.786	1'32.490C	230,0	16:40'45.881
19	19.565	24.854	23.324	23.645	<b>1'31.388</b>	235,0	16:42'17.269
20	<b>19.460</b>	25.026	23.342	<b>23.618</b>	1'31.446	<b>237,1</b>	16:43'48.715
21	19.614	<b>24.818</b>	<b>23.307</b>	24.007	1'31.746	235,5	16:45'20.461

**8°** **61 C. ONCU [1'31.568]**

Lap	Seg.1	Seg.2	Seg.3	Seg.4	Lap Time	km/h	Local Time
1		26.849	25.027	24.757		224,7	16:01'51.281
2	20.205	25.509	23.840	24.535	1'34.089	228,1	16:03'25.370
3	20.202	25.819	23.600	24.078	1'33.699	231,5	16:04'59.069
4	20.217	25.610	23.993	25.539	1'35.359	228,1	16:06'34.428
5	19.944	25.595	23.964	24.385	1'33.888	<b>235,0</b>	16:08'08.316
6	20.267	25.464	23.595	27.749	1'37.075P	233,0	16:09'45.391
7	4'33.646	26.638	23.679	24.292	5'48.255P	227,1	16:15'33.646
8	19.784	25.008	23.638	24.072	1'32.502	227,6	16:17'06.148
9	19.707	25.000	23.576	24.029	1'32.312	227,1	16:18'38.460
10	19.921	30.747	23.906	24.256	1'38.830	226,6	16:20'17.290
11	19.723	25.084	23.505	33.514	1'41.826	230,5	16:21'59.116
12	21.944	26.435	25.933	25.007	1'39.319	221,0	16:23'38.435

13	19.786	25.038	23.460	23.894	1'32.178	226,6	16:25'10.613
14	20.003	25.557	23.509	24.681	1'33.750	229,0	16:26'44.363
15	19.646	29.808	23.814	30.421	1'43.689CP	226,6	16:28'28.052
16	7'03.283	25.878	24.013	24.491	8'17.665P	228,5	16:36'45.717
17	19.667	24.848	<b>23.105</b>	23.948	<b>1'31.568</b>	228,1	16:38'17.285
18	19.701	25.059	24.187	23.979	1'32.926C	228,5	16:39'50.211
19	19.715	28.416	25.227	24.487	1'37.845C	224,3	16:41'28.056
20	19.633	24.806	23.184	24.149	1'31.772	228,5	16:42'59.828
21	<b>19.581</b>	26.127	24.253	24.698	1'34.659	228,1	16:44'34.487
22	19.692	<b>24.805</b>	23.296	<b>23.885</b>	1'31.678	231,0	16:46'06.165

**9°** **38 H. SOOMER [1'31.580]**

Lap	Seg.1	Seg.2	Seg.3	Seg.4	Lap Time	km/h	Local Time
1		27.029	24.957	25.024		229,0	16:01'51.976
2	20.044	25.668	24.263	24.446	1'34.421	234,0	16:03'26.397
3	19.881	25.388	23.505	24.234	1'33.008	<b>234,5</b>	16:04'59.405
4	20.106	25.513	23.925	24.065	1'33.609	229,5	16:06'33.014
5	19.981	25.242	23.705	24.145	1'33.073	229,0	16:08'06.087
6	20.004	24.919	23.483	24.066	1'32.472	230,5	16:09'38.559
7	20.175	25.572	24.110	28.284	1'38.141P	226,1	16:11'16.700
8	4'13.218	25.789	23.907	24.267	5'27.181P	228,1	16:16'43.881
9	20.053	24.923	23.591	23.901	1'32.468	228,1	16:18'16.349
10	19.781	25.113	23.608	23.824	1'32.326	231,5	16:19'48.675
11	19.847	25.083	23.408	24.395	1'32.733	230,5	16:21'21.408
12	19.884	25.825	23.695	27.526	1'36.930P	228,1	16:22'58.338
13	7'28.639	25.751	24.511	24.877	8'43.778P	227,1	16:31'42.116
14	19.878	24.730	<b>23.368</b>	<b>23.604</b>	<b>1'31.580</b>	228,5	16:33'13.696
15	<b>19.555</b>	<b>24.680</b>	23.483	24.032	1'31.750	231,5	16:34'45.446
16	21.068	25.846	23.818	24.343	1'35.075	227,6	16:36'20.521
17	19.701	24.868	23.986	23.908	1'32.463	228,5	16:37'52.984
18	19.829	24.813	23.630	23.753	1'32.025C	229,0	16:39'25.009
19	19.763	24.923	23.446	24.076	1'32.208C	228,5	16:40'57.217
20	19.831	25.279	23.466	23.901	1'32.477	231,0	16:42'29.694
21	19.720	24.905	23.645	23.895	1'32.165	229,5	16:44'01.859
22	19.987	25.136	23.586	23.937	1'32.646	230,5	16:45'34.505

**10°** **62 S. MANZI [1'31.699]**

Lap	Seg.1	Seg.2	Seg.3	Seg.4	Lap Time	km/h	Local Time
1		26.237	24.552	24.677		233,0	16:01'55.710
2	20.192	25.288	23.748	24.385	1'33.613	235,5	16:03'29.323
3	19.894	25.375	23.610	24.207	1'33.086	237,1	16:05'02.409
4	19.956	25.317	23.300	24.309	1'32.882	<b>241,3</b>	16:06'35.291
5	19.842	25.192	23.756	24.268	1'33.058	239,2	16:08'08.349
6	19.872	25.021	23.499	23.993	1'32.385	234,0	16:09'40.734
7	19.825	25.129	23.511	23.837	1'32.302	233,0	16:11'13.036
8	28.837	27.667	23.974	30.986	1'51.464P	234,0	16:13'04.500
9	8'38.962	26.187	23.864	24.429	9'53.442P	233,0	16:22'57.942
10	19.916	25.236	23.457	24.113	1'32.722	233,0	16:24'30.664
11	19.981	25.423	23.732	24.093	1'33.229	234,0	16:26'03.893
12	20.114	25.302	23.548	24.127	1'33.091	231,5	16:27'36.984
13	22.501	26.609	23.693	24.229	1'37.032	233,0	16:29'14.016
14	19.914	25.390	23.550	23.959	1'32.813	231,5	16:30'46.829
15	21.971	27.032	25.082	30.087	1'44.172P	212,7	16:32'31.001
16	4'02.033	25.759	23.476	24.179	5'15.447P	236,1	16:37'46.448
17	19.783	<b>24.875</b>	23.309	23.900	1'31.867	235,0	16:39'18.315
18	19.698	25.056	23.419	23.974	1'32.147C	233,0	16:40'50.462
19	<b>19.669</b>	26.149	25.362	24.143	1'35.323	211,5	16:42'25.785
20	19.754	25.076	23.342	23.908	1'32.080	235,0	16:43'57.865
21	19.754	24.934	<b>23.260</b>	<b>23.751</b>	<b>1'31.699</b>	235,0	16:45'29.564

**11°** **69 T. BOOTH-AMOS [1'31.748]**

Lap	Seg.1	Seg.2	Seg.3	Seg.4	Lap Time	km/h	Local Time
1		26.442	24.451	24.870		230,0	16:01'57.485

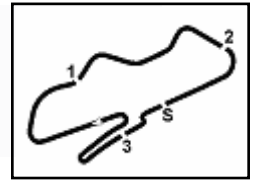
15/07/2022 P = Pits In/Out - C = Lap Time Cancelled

These data/results cannot be reproduced, stored and/or transmitted in whole or in part by any manner of electronic, mechanical, photocopying, recording, broadcasting or otherwise now known or herein after developed without the previous express consent by the copyright owner, except for reproduction in daily press and regular printed publications on sale to the public within 60 days of the event related to those data/results and always provided that copyright symbol appears together as follows below.

© DORNA WSBK ORGANIZATION Srl 2022







## Prosecco DOC - UK Round, 15-17 July 2022 Chronological Analysis Free Practice 2nd Session

2	20.257	25.402	23.654	24.386	1'33.699	232,5	16:03'31.184	19	19.834	28.303	23.703	23.845	1'35.685C	232,0	16:40'08.733
3	19.896	25.486	23.523	24.357	1'33.262	229,5	16:05'04.446	20	<b>19.717</b>	25.070	23.486	<b>23.675</b>	<b>1'31.948</b>	232,5	16:41'40.681
4	19.826	25.524	23.585	24.121	1'33.056	231,0	16:06'37.502	21	19.757	25.172	30.467	26.543	1'41.939	226,6	16:43'22.620
5	19.781	25.071	23.483	24.464	1'32.799	235,5	16:08'10.301	22	20.133	25.352	23.939	24.109	1'33.533	230,5	16:44'56.153
6	19.992	25.623	23.792	24.240	1'33.647	<b>238,1</b>	16:09'43.948	23	19.911	25.247	23.979	33.005	1'42.142P	227,6	16:46'38.295
7	19.798	25.067	23.429	28.630	1'36.924P	231,0	16:11'20.872								
8	6'42.547	25.882	23.780	24.493	7'56.702P	229,5	16:19'17.574								
9	19.918	25.159	23.530	24.038	1'32.645	229,0	16:20'50.219								
10	19.768	25.224	23.421	24.048	1'32.461	231,5	16:22'22.680								
11	19.794	25.162	23.434	23.968	1'32.358	231,0	16:23'55.038								
12	19.774	25.218	23.496	23.950	1'32.438	229,5	16:25'27.476								
13	20.737	26.138	24.201	29.091	1'40.167P	226,1	16:27'07.643								
14	6'22.250	26.622	25.666	24.500	7'39.038P	207,0	16:34'46.681								
15	19.766	<b>24.859</b>	23.272	<b>23.885</b>	1'31.782	229,5	16:36'18.463								
16	<b>19.528</b>	24.986	<b>23.252</b>	23.982	<b>1'31.748</b>	232,5	16:37'50.211								
17	19.736	24.911	1'12.588	43.110	2'40.345CP	162,4	16:40'30.556								

**14° 25 M. BRENNER (1'32.154)**

Lap	Seg1	Seg2	Seg3	Seg4	Lap Time	km/h	Local Time
1			26.835	24.966	25.199	225,2	16:02'13.608
2	20.142	25.380	23.590	24.678	1'33.790	229,5	16:03'47.398
3	20.374	26.131	23.846	24.231	1'34.582	<b>232,0</b>	16:05'21.980
4	19.830	25.077	23.563	24.471	1'32.941C	228,1	16:06'54.921
5	19.977	25.196	23.491	24.089	1'32.753	229,0	16:08'27.674
6	20.038	25.547	24.025	28.680	1'38.290P	228,5	16:10'05.964
7	6'14.369	26.271	24.155	24.287	7'29.082P	222,4	16:17'35.046
8	20.045	<b>24.934</b>	23.644	<b>23.810</b>	1'32.433	227,1	16:19'07.479
9	19.754	24.971	24.581	24.746	1'34.052C	228,5	16:20'41.531
10	19.735	25.005	23.450	23.964	<b>1'32.154</b>	230,5	16:22'13.685
11	19.742	24.960	23.622	23.937	1'32.261	229,5	16:23'45.946
12	19.774	25.054	23.520	23.938	1'32.286	228,1	16:25'18.232
13	19.909	25.256	24.507	27.940	1'37.162P	225,2	16:26'55.394
14	5'08.507	25.887	24.033	24.221	6'22.648P	223,3	16:33'18.042
15	<b>19.675</b>	25.662	24.298	24.025	1'33.660	226,6	16:34'51.702
16	19.905	25.012	<b>23.433</b>	24.060	1'32.410	229,5	16:36'24.112
17	19.915	28.762	23.718	24.030	1'36.425	230,5	16:38'00.537
18	19.901	25.870	25.146	27.313	1'38.230C	216,6	16:39'38.767
19	19.857	25.345	23.764	23.884	1'32.850C	227,1	16:41'11.617
20	19.844	25.510	24.343	24.189	1'33.886	225,7	16:42'45.503
21	19.806	25.099	23.689	23.961	1'32.555	224,3	16:44'18.058
22	19.877	25.041	23.784	24.036	1'32.738	227,6	16:45'50.796

**12° 56 P. SEBSTYEN (1'31.866)**

Lap	Seg1	Seg2	Seg3	Seg4	Lap Time	km/h	Local Time
1		26.957	25.561	33.343	230,5	16:01'55.947	
2	20.325	25.858	23.931	24.750	1'34.864	233,0	16:03'30.811
3	20.047	25.939	23.677	24.650	1'34.313	233,0	16:05'05.124
4	20.017	25.633	23.767	24.753	1'34.170	<b>234,5</b>	16:06'39.294
5	20.074	25.463	23.749	24.475	1'33.761	233,0	16:08'13.055
6	20.126	25.841	23.740	24.448	1'34.155	233,5	16:09'47.210
7	22.720	26.228	24.028	29.160	1'42.136P	230,0	16:11'29.346
8	3'43.840	25.769	23.823	24.759	4'58.191P	230,0	16:16'27.537
9	20.053	25.341	23.560	24.313	1'33.267	231,0	16:18'00.804
10	19.865	25.203	23.609	24.269	1'32.946	234,0	16:19'33.750
11	19.910	25.354	23.649	24.428	1'33.341	232,5	16:21'07.091
12	20.009	25.644	25.275	30.742	1'41.670CP	<b>234,5</b>	16:22'48.761
13	5'32.004	27.256	23.940	24.437	6'47.637P	230,0	16:29'36.398
14	19.793	25.158	23.324	24.299	1'32.574	233,0	16:31'08.972
15	20.403	26.633	24.100	24.257	1'35.393	228,5	16:32'44.365
16	19.705	<b>24.862</b>	<b>23.259</b>	<b>24.040</b>	<b>1'31.866</b>	231,0	16:34'16.231
17	<b>19.667</b>	24.937	23.393	24.156	1'32.153	233,0	16:35'48.384
18	20.830	31.086	23.925	24.507	1'40.348C	232,5	16:37'28.732
19	19.721	24.988	23.543	24.189	1'32.441C	229,5	16:39'01.173
20	19.724	25.837	29.787	26.680	1'42.028C	227,6	16:40'43.201
21	19.720	25.203	23.396	24.251	1'32.570	233,5	16:42'15.771
22	19.801	25.365	23.501	29.107	1'37.774	231,5	16:43'53.545
23	19.763	25.026	23.293	24.082	1'32.164	232,5	16:45'25.709

**15° 17 K. SMITH (1'32.155)**

Lap	Seg1	Seg2	Seg3	Seg4	Lap Time	km/h	Local Time
1			26.478	25.062	25.077	224,3	16:02'44.841
2	20.076	25.326	23.671	24.479	1'33.552	227,1	16:04'18.393
3	20.003	25.219	23.443	24.174	1'32.839	229,5	16:05'51.232
4	19.829	25.109	23.556	24.252	1'32.746	229,0	16:07'23.978
5	19.769	25.046	<b>23.291</b>	24.049	<b>1'32.155</b>	230,5	16:08'56.133
6	19.716	25.046	23.475	24.186	1'32.423	230,0	16:10'28.556
7	19.752	<b>24.864</b>	23.519	24.048	1'32.183	229,5	16:12'00.739
8	<b>19.577</b>	25.151	23.638	24.332	1'32.698	229,0	16:13'33.437
9	20.154	25.240	23.480	24.298	1'33.172	228,5	16:15'06.609
10	19.634	25.077	23.576	24.217	1'32.504	<b>231,0</b>	16:16'39.113
11	19.718	24.999	23.617	<b>23.978</b>	1'32.312	226,6	16:18'11.425
12	20.738	26.318	24.139	30.814	1'42.009P	228,1	16:19'53.434
13	13'55.865	26.601	24.254	24.429	15'11.149P	226,6	16:35'04.583

**13° 10 U. ORRADRE (1'31.948)**

Lap	Seg1	Seg2	Seg3	Seg4	Lap Time	km/h	Local Time
1		27.491	28.473	25.536	192,9	16:01'53.428	
2	20.272	25.331	23.554	24.563	1'33.720		16:03'27.148
3	19.883	25.106	23.828	24.670	1'33.487		16:05'00.635
4	20.111	25.261	23.975	28.007	1'37.354		16:06'37.989
5	19.801	25.080	<b>23.419</b>	24.462	1'32.762		16:08'10.751
6	19.863	25.406	23.898	24.410	1'33.577		16:09'44.328
7	19.866	<b>24.945</b>	23.448	24.319	1'32.578		16:11'16.906
8	19.947	25.532	23.655	24.406	1'33.540		16:12'50.446
9	20.136	25.425	23.654	24.185	1'33.400		16:14'23.846
10	19.755	25.234	23.553	23.976	1'32.518		16:15'56.364
11	25.228	26.738	23.885	23.981	1'39.832		16:17'36.196
12	19.913	25.100	23.654	24.628	1'33.295	<b>233,5</b>	16:19'09.491
13	19.948	25.755	23.992	24.618	1'34.313		16:20'43.804
14	19.986	25.242	23.694	24.072	1'32.994		16:22'16.798
15	21.420	27.505	24.143	30.907	1'43.975P		16:24'00.773
16	10'03.320	30.131	27.231	24.132	11'24.814P	182,4	16:35'25.587
17	21.185	26.014	23.896	24.146	1'35.241C	231,5	16:37'00.828
18	19.931	<b>24.945</b>	23.598	23.746	1'32.220	232,0	16:38'33.048

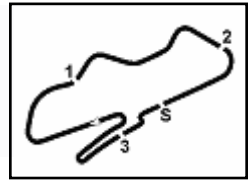
**16° 54 B. SOFUOGLU (1'32.216)**

Lap	Seg1	Seg2	Seg3	Seg4	Lap Time	km/h	Local Time
1			27.614	27.103	25.245	203,9	16:01'51.542
2	20.159	25.861	24.005	24.332	1'34.357	240,3	16:03'25.899
3	20.088	25.667	23.797	24.306	1'33.858	<b>240,8</b>	16:04'59.757
4	20.063	25.730	23.771	24.475	1'34.039	<b>240,8</b>	16:06'33.796
5	20.048	25.629	23.747	24.325	1'33.749	232,5	16:08'07.545
6	20.026	25.484	23.673	24.358	1'33.541	235,5	16:09'41.086
7	19.967	25.552	23.553	24.127	1'33.199	233,5	16:11'14.285
8	19.956	25.764	23.715	24.169	1'33.604	233,0	16:12'47.889
9	20.080	25.641	23.619	23.944	1'33.284	234,0	16:14'21.173
10	19.818	25.592	23.555	23.960	1'32.925	235,5	16:15'54.098
11	20.903	29.086	25.049	30.861	1'45.899CP	231,5	16:17'39.997
12	6'54.265	26.493	23.784	24.378	8'08.920P	232,5	16:25'48.917
13	19.879	25.568	23.517	24.132	1'33.096	232,5	16:27'22.013
14	19.915	25.419	23.570	24.036	1'32.940	234,5	16:28'54.953

15/07/2022 P = Pits In/Out - C = Lap Time Cancelled

These data/results cannot be reproduced, stored and/or transmitted in whole or in part by any manner of electronic, mechanical, photocopying, recording, broadcasting or otherwise now known or herein after developed without the previous express consent by the copyright owner, except for reproduction in daily press and regular printed publications on sale to the public within 60 days of the event related to those data/results and always provided that copyright symbol appears together as follows below.

© DORNA WSBK ORGANIZATION Srl 2022



Donington Park 4.023 m

Prosecco DOC - UK Round, 15-17 July 2022  
Chronological Analysis Free Practice 2nd Session

4 / 6

15	19.830	25.353	23.497	24.134	1'32.814	234,0	16:30'27.767	6	20.140	25.349	23.426	24.217	1'33.132	233,0	16:09'47.567
16	19.724	25.481	23.692	23.787	1'32.684	235,0	16:32'00.451	7	20.062	25.140	23.547	24.187	1'32.936	230,5	16:11'20.503
17	19.685	25.464	23.446	23.984	1'32.579	236,6	16:33'33.030	8	20.188	26.171	23.978	30.063	1'40.400	227,6	16:13'00.903
18	19.793	25.399	23.534	23.838	1'32.564	236,1	16:35'05.594	9	20.124	25.363	23.645	24.067	1'33.199	227,1	16:14'34.102
19	19.862	25.489	23.561	23.905	1'32.817	235,0	16:36'38.411	10	20.196	26.027	24.167	30.287	1'40.677P	229,5	16:16'14.779
20	19.823	25.209	23.392	23.792	1'32.216	239,7	16:38'10.627	11	6'48.057	25.876	23.886	24.450	8'02.269P	227,1	16:24'17.048
21	19.657	25.391	23.685	24.050	1'32.783C	235,0	16:39'43.410	12	20.209	25.538	23.440	24.373	1'33.560	231,5	16:25'50.608
22	19.906	26.856	24.062	24.502	1'35.326C	232,0	16:41'18.736	13	20.047	25.342	23.563	24.228	1'33.180	229,0	16:27'23.788
23	19.760	25.425	23.535	23.978	1'32.698	234,5	16:42'51.434	14	20.076	25.159	23.636	24.050	1'32.921	230,0	16:28'56.709
24	19.734	25.377	23.627	23.808	1'32.546	231,0	16:44'23.980	15	20.180	25.611	23.870	30.254	1'39.915P	224,7	16:30'36.624
25	19.815	25.604	23.655	23.902	1'32.976	235,5	16:45'56.956	16	5'29.061	25.633	23.589	24.308	6'42.591P	230,5	16:37'19.215

17° 99 A. HUERTAS [1'32.246]

Lap	Seg1	Seg2	Seg3	Seg4	Lap Time	km/h	Local Time
1		26.329	24.040	26.328		225,7	16:01'45.053
2	20.243	25.352	23.677	24.759	1'34.031	231,0	16:03'19.084
3	20.043	25.097	23.512	24.148	1'32.800	233,0	16:04'51.884
4	19.987	25.073	23.603	24.350	1'33.013	229,5	16:06'24.897
5	19.895	25.255	23.485	24.406	1'33.041	229,0	16:07'57.938
6	19.939	25.391	23.653	24.287	1'33.270	230,5	16:09'31.208
7	20.147	26.057	24.047	28.926	1'39.177P	221,9	16:11'10.385
8	6'16.116	25.687	23.562	24.775	7'30.140P	228,5	16:18'40.525
9	20.037	25.994	23.806	24.322	1'34.159	226,1	16:20'14.684
10	20.035	25.382	23.664	24.626	1'33.707	226,6	16:21'48.391
11	20.086	25.455	23.518	24.293	1'33.352	230,0	16:23'21.743
12	20.022	25.229	23.725	24.397	1'33.373	224,7	16:24'55.116
13	20.014	26.847	26.881	29.537	1'43.279CP	180,9	16:26'38.395
14	8'01.717	25.420	23.604	24.343	9'15.084P	228,5	16:35'53.479
15	19.875	25.110	23.419	24.051	1'32.455C	230,5	16:37'25.934
16	19.761	25.018	23.471	24.066	1'32.316C	228,5	16:38'58.250
17	19.839	24.863	23.354	23.952	1'32.008C	227,6	16:40'30.258
18	22.285	26.143	26.891	26.777	1'42.096	188,5	16:42'12.354
19	19.872	25.218	23.445	25.698	1'34.233	229,5	16:43'46.587
20	19.799	24.994	23.384	24.069	1'32.246	233,5	16:45'18.833

18° 55 Y. MONTELLA [1'32.276]

Lap	Seg1	Seg2	Seg3	Seg4	Lap Time	km/h	Local Time
1		26.509	25.522	25.306		218,3	16:01'53.009
2	19.986	25.318	23.731	24.797	1'33.832	235,0	16:03'26.841
3	19.810	25.330	23.793	24.556	1'33.489	236,1	16:05'00.330
4	19.913	25.367	24.421	57.055	2'06.756P	235,5	16:07'07.086
5	9'01.815	25.700	23.886	24.738	10'16.139P	226,1	16:17'23.225
6	19.942	25.480	23.721	24.768	1'33.911	229,0	16:18'57.136
7	19.885	25.399	23.607	24.163	1'33.054	230,5	16:20'30.190
8	19.794	25.181	23.566	24.202	1'32.743	231,0	16:22'02.933
9	20.201	25.282	23.672	24.297	1'33.452	229,5	16:23'36.385
10	19.856	25.907	23.831	24.304	1'33.898	226,1	16:25'10.283
11	19.789	25.110	23.465	24.204	1'32.568	232,5	16:26'42.851
12	19.768	25.159	23.589	30.775	1'39.291P	230,5	16:28'22.142
13	8'48.842	28.411	23.800	24.198	10'05.251P	228,1	16:38'27.393
14	19.805	25.236	26.301	29.557	1'40.899C	187,9	16:40'08.292
15	19.704	24.947	24.767	24.679	1'34.097	233,0	16:41'42.389
16	19.782	25.098	23.602	24.106	1'32.588	233,0	16:43'14.977
17	19.776	25.153	23.577	24.286	1'32.792	229,5	16:44'47.769
18	19.695	25.083	23.500	23.998	1'32.276	232,0	16:46'20.045

19° 23 I. VINALES [1'32.336]

Lap	Seg1	Seg2	Seg3	Seg4	Lap Time	km/h	Local Time
1		27.307	24.331	25.165		227,6	16:01'56.643
2	20.340	25.491	23.872	24.956	1'34.659	233,0	16:03'31.302
3	20.149	25.529	24.103	24.908	1'34.689	227,6	16:05'05.991
4	20.067	25.328	23.492	24.643	1'33.530	231,5	16:06'39.521
5	20.044	25.503	24.423	24.944	1'34.914	236,1	16:08'14.435

20° 4 H. TRUELOVE [1'32.404]

Lap	Seg1	Seg2	Seg3	Seg4	Lap Time	km/h	Local Time
1		26.457	24.338	25.363		224,3	16:02'23.156
2	20.427	25.485	23.717	24.569	1'34.198	227,1	16:03'57.354
3	20.129	25.246	23.614	24.574	1'33.563	228,1	16:05'30.917
4	20.047	25.170	23.676	24.565	1'33.458C	227,6	16:07'04.375
5	20.035	25.073	23.743	24.481	1'33.332	228,1	16:08'37.707
6	19.986	25.249	23.876	24.451	1'33.562	227,6	16:10'11.269
7	19.930	25.026	23.656	24.528	1'33.140	228,1	16:11'44.409
8	20.054	25.072	23.650	24.437	1'33.213	227,1	16:13'17.622
9	19.957	25.139	23.705	24.397	1'33.198	225,7	16:14'50.820
10	19.935	25.346	23.507	24.940	1'33.728	228,1	16:16'24.548
11	20.321	25.296	23.775	24.310	1'33.702	227,1	16:17'58.250
12	20.103	25.221	23.591	24.453	1'33.368	229,0	16:19'31.618
13	20.120	25.281	23.689	24.237	1'33.327	229,0	16:21'04.945
14	20.507	25.786	23.823	24.551	1'34.667	228,1	16:22'39.612
15	20.041	25.420	23.665	24.572	1'33.698	229,5	16:24'13.310
16	20.096	25.688	23.768	27.492	1'37.044P	228,5	16:25'50.354
17	14'20.924	25.821	23.896	24.509	15'35.150CP	227,1	16:41'25.504
18	19.847	24.931	23.423	24.203	1'32.404	227,6	16:42'57.908
19	20.001	25.711	24.110	24.377	1'34.199	227,1	16:44'32.107
20	19.901	25.026	23.517	24.249	1'32.693	229,0	16:46'04.800

21° 94 A. VERDOLIA [1'32.553]

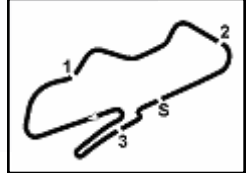
Lap	Seg1	Seg2	Seg3	Seg4	Lap Time	km/h	Local Time
1		26.292	24.610	24.748		224,7	16:02'14.145
2	20.121	25.416	23.669	24.397	1'33.603	229,0	16:03'47.748
3	20.172	26.246	23.907	24.479	1'34.804	227,6	16:05'22.552
4	19.892	25.211	23.542	24.263	1'32.908C	229,5	16:06'55.460
5	19.874	25.237	23.439	24.123	1'32.673	228,1	16:08'28.133
6	19.909	25.388	23.814	24.359	1'33.470	229,0	16:10'01.603
7	19.985	25.276	23.611	24.248	1'33.120	227,1	16:11'34.723
8	19.924	25.159	23.668	24.118	1'32.869	227,1	16:13'07.592
9	19.910	25.237	23.508	24.059	1'32.714	226,1	16:14'40.306
10	19.982	26.054	23.535	24.105	1'33.676	229,0	16:16'13.982
11	19.944	25.267	23.695	24.285	1'33.191	226,6	16:17'47.173
12	19.939	25.228	23.528	24.250	1'32.945	229,5	16:19'20.118
13	20.379	25.452	23.662	28.204	1'37.697P	228,1	16:20'57.815
14	6'40.733	26.656	23.809	25.111	7'56.309P	223,8	16:28'54.124
15	19.883	25.142	23.579	24.097	1'32.701	224,3	16:30'26.825
16	19.756	25.193	23.564	24.040	1'32.553	226,6	16:31'59.378
17	19.852	25.053	25.512	25.110	1'35.527	227,6	16:33'34.905
18	19.950	25.369	23.677	29.109	1'38.105P	229,5	16:35'13.010
19	9'28.153	26.242	24.123	24.726	10'43.244P	224,3	16:45'56.254

15/07/2022 P = Pits In/Out - C = Lap Time Cancelled

These data/results cannot be reproduced, stored and/or transmitted in whole or in part by any manner of electronic, mechanical, photocopying, recording, broadcasting or otherwise now known or herein after developed without the previous express consent by the copyright owner, except for reproduction in daily press and regular printed publications on sale to the public within 60 days of the event related to those data/results and always provided that copyright symbol appears together as follows below.

© DORNA WSBK ORGANIZATION Srl 2022





**Prosecco DOC - UK Round, 15-17 July 2022**  
**Chronological Analysis Free Practice 2nd Session**

23° 21 B. CURRIE [1'32.593]							
Lap	Seg.1	Seg.2	Seg.3	Seg.4	Lap Time	km/h	Local Time
1		27.046	24.468	24.891	227,1	16:02'11.583	
2	20.388	25.971	24.128	24.722	1'35.209	230,5	16:03'46.792
3	19.903	25.420	23.756	24.312	1'33.391	228,5	16:05'20.183
4	19.817	25.084	23.731	24.347	1'32.979C	227,6	16:06'53.162
5	19.831	25.273	<b>23.496</b>	<b>24.116</b>	1'32.716	229,0	16:08'25.878
6	20.127	26.481	25.428	25.118	1'37.154	184,0	16:10'03.032
7	19.802	25.146	23.629	24.190	1'32.767	229,5	16:11'35.799
8	19.789	<b>25.046</b>	23.529	24.363	1'32.727	<b>232,0</b>	16:13'08.526
9	<b>19.785</b>	25.112	23.547	24.149	<b>1'32.593</b>	228,5	16:14'41.119
10	20.724	26.103	24.712	29.466	1'41.005P	224,7	16:16'22.124
11	17'53.165	26.170	24.183	24.771	19'08.289P	228,1	16:35'30.413
12	21.973	25.562	23.627	26.615	1'37.777C	230,5	16:37'08.190

25° 50 O. VOSTATEK [1'33.199]							
Lap	Seg.1	Seg.2	Seg.3	Seg.4	Lap Time	km/h	Local Time
1		26.923	25.335	25.481	229,0	16:01'48.046	
2	20.729	26.137	24.094	25.187	1'36.147	231,5	16:03'24.193
3	20.329	25.701	23.901	24.696	1'34.627	228,1	16:04'58.820
4	20.291	25.920	24.612	24.917	1'35.740C	<b>232,0</b>	16:06'34.560
5	20.209	25.557	24.030	24.675	1'34.471	<b>238,1</b>	16:08'09.031
6	20.039	25.611	23.647	24.382	1'33.679	235,0	16:09'42.710
7	20.054	25.309	23.852	24.422	1'33.637	229,5	16:11'16.347
8	19.954	27.059	24.073	24.590	1'35.676	228,1	16:12'52.023
9	19.988	25.926	24.037	24.510	1'34.461	228,5	16:14'26.484
10	20.281	26.758	24.575	30.336	1'41.950P	224,7	16:16'08.434
11	9'18.422	26.747	24.680	26.503	10'36.352P	224,7	16:26'44.786
12	20.018	25.393	23.899	24.589	1'33.899	225,7	16:28'18.685
13	20.022	<b>25.261</b>	24.273	24.310	1'33.866	228,1	16:29'52.551
14	19.964	25.421	23.923	24.661	1'33.969	226,1	16:31'26.520
15	21.096	26.454	24.164	24.252	1'35.966	221,5	16:33'02.486
16	<b>19.876</b>	25.314	23.874	24.438	1'33.502	230,5	16:34'35.988
17	20.041	25.450	23.703	24.298	1'33.492	229,0	16:36'09.480
18	20.623	26.872	<b>23.643</b>	26.379	1'37.517	234,0	16:37'46.997
19	19.918	25.879	24.901	28.130	1'38.828	228,1	16:39'25.825
20	19.921	25.374	23.782	24.334	1'33.411C	227,1	16:40'59.236
21	19.979	25.342	23.693	24.327	1'33.341	228,1	16:42'32.577
22	19.961	28.309	24.461	<b>24.231</b>	1'36.962	218,8	16:44'09.539
23	19.906	25.383	23.656	24.254	<b>1'33.199</b>	227,1	16:45'42.738

23° 27 M. CASADEI [1'32.779]							
Lap	Seg.1	Seg.2	Seg.3	Seg.4	Lap Time	km/h	Local Time
1		26.440	24.467	25.536	232,0	16:01'53.516	
2	20.394	25.806	23.743	24.442	1'34.385	236,1	16:03'27.901
3	20.119	25.677	23.764	24.418	1'33.978	236,1	16:05'01.879
4	19.999	25.595	23.806	24.766	1'34.166	<b>237,1</b>	16:06'36.045
5	20.183	25.652	23.794	24.244	1'33.873	234,5	16:08'09.918
6	20.129	25.719	24.061	24.956	1'34.865	236,1	16:09'44.783
7	19.989	25.513	24.115	24.512	1'34.129	231,0	16:11'18.912
8	20.316	27.722	26.266	34.453	1'48.757P	207,4	16:13'07.669
9	4'10.732	26.079	24.497	24.330	5'25.638P	214,4	16:18'33.307
10	20.069	<b>25.249</b>	23.463	24.189	1'32.970	232,5	16:20'06.277
11	19.953	25.371	23.534	24.207	1'33.065	233,0	16:21'39.342
12	<b>19.884</b>	25.384	23.624	24.229	1'33.121	231,5	16:23'12.463
13	19.939	26.417	26.054	24.416	1'36.826	206,2	16:24'49.289
14	20.043	25.318	<b>23.392</b>	<b>24.026</b>	<b>1'32.779</b>	233,5	16:26'22.068
15	20.071	25.500	23.805	24.460	1'33.836	235,5	16:27'55.904
16	19.955	25.319	24.912	24.138	1'34.324	232,0	16:29'30.228
17	19.906	25.588	24.157	30.482	1'40.133P	218,1	16:31'10.361
18	6'40.339	25.981	23.857	24.355	7'54.532CP	228,5	16:39'04.893
19	20.087	25.479	23.750	24.139	1'33.455C	230,0	16:40'38.348
20	20.019	25.353	23.856	24.428	1'33.656	232,5	16:42'12.004
21	19.894	25.292	23.717	24.308	1'33.211	232,0	16:43'45.215
22	19.907	25.731	23.773	24.449	1'33.860	232,0	16:45'19.075

26° 22 F. FULIGNI [1'33.640]							
Lap	Seg.1	Seg.2	Seg.3	Seg.4	Lap Time	km/h	Local Time
1		27.135	25.283	25.329	225,7	16:02'30.104	
2	20.763	25.968	24.252	24.926	1'35.909	227,6	16:04'06.013
3	20.565	25.807	24.263	24.656	1'35.291	229,0	16:05'41.304
4	20.302	25.975	24.507	24.522	1'35.306	228,5	16:07'16.610
5	20.229	25.638	24.031	24.368	1'34.266	230,0	16:08'50.876
6	20.082	25.388	23.880	24.290	<b>1'33.640</b>	230,0	16:10'24.516
7	20.467	25.794	24.034	24.344	1'34.639	<b>234,0</b>	16:11'59.155
8	20.078	25.487	24.097	24.416	1'34.078	230,0	16:13'33.233
9	20.544	25.541	24.097	24.287	1'34.469	233,0	16:15'07.702
10	<b>19.977</b>	25.526	23.923	29.737	1'39.163P	231,0	16:16'46.865
11	5'03.675	27.556	25.454	26.370	6'23.055P	214,4	16:23'09.920
12	20.268	25.889	24.287	24.523	1'34.967	230,0	16:24'44.887
13	20.178	25.406	24.003	24.429	1'34.016	229,5	16:26'18.903
14	22.814	25.833	25.117	25.204	1'38.968	202,7	16:27'57.871
15	20.034	25.378	23.986	24.356	1'33.754	231,5	16:29'31.625
16	19.999	25.416	24.158	29.533	1'39.106P	231,0	16:31'10.731
17	5'31.283	27.290	25.022	26.995	6'50.590P	220,6	16:38'01.321
18	20.124	25.637	24.700	24.370	1'34.831C	217,5	16:39'36.152
19	19.986	<b>25.348</b>	<b>23.799</b>	24.120	1'33.253C	230,0	16:41'09.405
20	20.093	27.852	24.562	25.027	1'37.534	231,0	16:42'46.939
21	20.028	26.227	24.450	26.783	1'37.488	227,1	16:44'24.427
22	20.087	25.534	23.883	<b>24.244</b>	1'33.748	233,5	16:45'58.175

24° 24 L. TACCINI [1'33.036]							
Lap	Seg.1	Seg.2	Seg.3	Seg.4	Lap Time	km/h	Local Time
1		26.852	24.325	25.126	231,0	16:01'45.554	
2	20.213	25.909	23.992	24.530	1'34.644	232,0	16:03'20.198
3	20.145	25.671	24.033	24.628	1'34.477	230,0	16:04'54.675
4	20.222	28.240	25.931	25.018	1'39.411	209,0	16:06'34.086
5	19.911	25.803	24.219	24.556	1'34.489	233,5	16:08'08.575
6	20.107	25.624	23.593	24.246	1'33.570	<b>237,1</b>	16:09'42.145
7	19.909	25.457	23.893	24.154	1'33.413	229,5	16:11'15.558
8	19.888	27.798	23.896	24.245	1'35.827	231,0	16:12'51.385
9	20.013	25.562	23.721	24.175	1'33.471	231,0	16:14'24.856
10	19.812	<b>25.403</b>	23.654	24.176	1'33.045	232,5	16:15'57.901
11	20.049	25.517	24.120	26.514	1'36.200	226,6	16:17'34.101
12	21.144	25.777	23.667	24.685	1'35.273	234,0	16:19'09.374
13	19.921	25.743	25.513	38.788	1'49.965P	231,5	16:20'59.339
14	12'37.358	26.529	24.794	24.164	13'52.845P	226,6	16:34'52.184
15	19.966	25.639	23.687	<b>23.984</b>	1'33.276	232,0	16:36'25.460
16	19.995	26.770	24.586	24.169	1'35.520	226,6	16:38'00.980
17	<b>19.713</b>	25.784	24.874	24.170	1'34.541C	215,3	16:39'35.521
18	19.758	25.437	23.759	24.082	<b>1'33.036C</b>	230,5	16:41'08.557
19	20.752	27.446	24.896	30.283	1'43.377	222,4	16:42'51.934
20	19.912	25.705	23.756	24.073	1'33.446	228,1	16:44'25.380
21	19.956	25.832	<b>23.566</b>	24.047	1'33.401	233,0	16:45'58.781

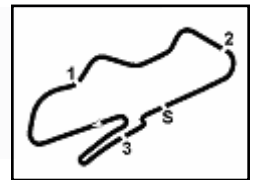
27° 73 M. KOFLER [1'33.881]							
Lap	Seg.1	Seg.2	Seg.3	Seg.4	Lap Time	km/h	Local Time
1		27.267	24.857	25.425	230,5	16:02'11.299	
2	20.524	25.910	24.263	25.284	1'35.981	231,5	16:03'47.280
3	20.221	26.216	24.250	25.064	1'35.751	231,0	16:05'23.031
4	20.243	25.631	24.243	25.012	1'35.129C	232,0	16:06'58.160
5	20.248	25.797	24.085	24.876	1'35.006	231,5	16:08'33.166
6	23.320	26.195	24.628	24.834	1'38.977	223,8	16:10'12.143
7	20.068	25.461	23.975	24.876	1'34.380	232,0	16:11'46.523
8	20.219	25.542	24.230	29.428	1'39.419P	231,5	16:13'25.942
9	6'40.491	26.159	24.114	28.432	7'59.196P	231,0	16:21'25.138

15/07/2022 P = Pits In/Out - C = Lap Time Cancelled

These data/results cannot be reproduced, stored and/or transmitted in whole or in part by any manner of electronic, mechanical, photocopying, recording, broadcasting or otherwise now known or herein after developed without the previous express consent by the copyright owner, except for reproduction in daily press and regular printed publications on sale to the public within 60 days of the event related to those data/results and always provided that copyright symbol appears together as follows below.

© DORNA WSBK ORGANIZATION Srl 2022





**Prosecco DOC - UK Round, 15-17 July 2022**  
**Chronological Analysis Free Practice 2nd Session**

10	23.183	26.242	26.365	28.715	1'44.505	197,9	16:23'09.643
11	20.080	25.407	<b>23.811</b>	24.663	1'33.961	232,0	16:24'43.604
12	20.450	25.749	25.064	24.676	1'35.939	230,5	16:26'19.543
13	20.522	26.250	24.546	31.629	1'42.947P	229,5	16:28'02.490
14	7'12.740	27.174	25.818	28.796	8'34.528P	199,0	16:36'37.018
15	20.441	25.559	24.292	24.536	1'34.828	231,5	16:38'11.846
16	20.082	25.695	24.043	24.565	1'34.385C	233,0	16:39'46.231
17	21.051	26.241	24.966	27.319	1'39.577C	207,8	16:41'25.808
18	<b>20.028</b>	<b>25.323</b>	24.204	24.703	1'34.258	<b>233,5</b>	16:43'00.066
19	20.098	25.612	24.083	25.096	1'34.889	232,0	16:44'34.955
20	20.107	25.414	23.907	<b>24.453</b>	<b>1'33.881</b>	<b>233,5</b>	16:46'08.836

31°		9 S. JESPERSEN					
Lap	Seg.1	Seg.2	Seg.3	Seg.4	Lap Time	km/h	Local Time
1		26.314	24.695	<b>24.704</b>	227,6	16:02'25.337	
2	<b>20.330</b>	<b>25.532</b>	<b>23.962</b>	30.976	1'40.800P	<b>230,5</b>	16:04'06.137
3	11'18.607	25.581	25.002	35.157	12'44.347P	205,4	16:16'50.484

28°		6 J. BUIS [1'34.444]					
Lap	Seg.1	Seg.2	Seg.3	Seg.4	Lap Time	km/h	Local Time
1		27.136	25.165	25.820	225,2	16:01'47.721	
2	20.488	26.111	24.441	26.056	1'37.096	224,3	16:03'24.817
3	20.457	25.889	24.208	25.156	1'35.710	227,1	16:05'00.527
4	20.439	25.704	24.085	25.214	1'35.442	233,0	16:06'35.969
5	20.080	25.903	24.108	<b>24.559</b>	1'34.650	<b>235,0</b>	16:08'10.619
6	20.215	<b>25.601</b>	23.846	24.898	1'34.560	234,0	16:09'45.179
7	20.378	25.748	24.172	24.731	1'35.029	228,5	16:11'20.208
8	20.191	26.376	24.501	46.684	1'57.752P	227,6	16:13'17.960
9	8'48.859	26.344	24.214	25.026	10'04.443P	229,5	16:23'22.403
10	20.185	25.921	23.885	24.624	1'34.615	227,6	16:24'57.018
11	20.265	26.091	24.818	25.650	1'36.824	228,1	16:26'33.842
12	20.400	26.046	24.265	24.995	1'35.706	222,4	16:28'09.548
13	20.641	26.344	24.236	27.922	1'39.143P	225,2	16:29'48.691
14	4'26.910	26.342	24.073	24.778	5'42.103P	231,0	16:35'30.794
15	21.766	25.939	<b>23.803</b>	26.493	1'38.001C	231,5	16:37'08.795
16	20.263	25.764	23.832	24.585	<b>1'34.444</b>	227,6	16:38'43.239
17	21.991	26.107	24.154	24.872	1'37.124C	227,1	16:40'20.363
18	20.271	26.204	24.309	24.707	1'35.491	224,3	16:41'55.854
19	<b>20.045</b>	25.680	23.836	24.907	1'34.468	228,5	16:43'30.322
20	20.172	25.912	24.184	24.999	1'35.267	225,7	16:45'05.589

29°		36 S. KRDEZE [1'34.763]					
Lap	Seg.1	Seg.2	Seg.3	Seg.4	Lap Time	km/h	Local Time
1		27.154	25.673	24.977	224,7	16:01'50.260	
2	20.470	26.298	24.846	25.448	1'37.062	228,5	16:03'27.322
3	20.261	25.913	24.339	24.933	1'35.446	231,0	16:05'02.768
4	21.153	26.131	24.337	25.995	1'37.616	231,0	16:06'40.384
5	20.445	<b>25.790</b>	24.232	<b>24.540</b>	1'35.007	232,0	16:08'15.391
6	20.652	26.116	24.188	28.834	1'39.790P	232,0	16:09'55.181
7	4'24.653	26.547	24.449	24.753	5'40.402P	230,5	16:15'35.583
8	20.505	25.865	24.423	24.717	1'35.510	228,1	16:17'11.093
9	20.348	25.952	24.378	24.731	1'35.409	229,5	16:18'46.502
10	20.384	25.988	24.325	24.678	1'35.375	229,5	16:20'21.877
11	21.209	30.001	24.989	25.831	1'42.030	221,9	16:22'03.907
12	20.338	26.006	24.226	24.624	1'35.194	230,0	16:23'39.101
13	20.373	25.840	24.298	24.618	1'35.129	230,0	16:25'14.230
14	20.229	25.961	24.309	24.766	1'35.265	229,0	16:26'49.495
15	23.226	26.711	24.839	32.997	1'47.773P	224,7	16:28'37.268
16	5'30.227	28.012	27.124	29.087	6'54.450P	179,7	16:35'31.718
17	21.203	26.047	24.319	26.187	1'37.756C	<b>233,0</b>	16:37'09.474
18	20.150	25.797	<b>24.031</b>	24.785	<b>1'34.763</b>	231,5	16:38'44.237
19	20.201	25.853	24.220	24.622	1'34.896C	228,1	16:40'19.133
20	23.368	26.017	24.074	24.561	1'38.020	232,5	16:41'57.153
21	<b>20.066</b>	25.895	24.085	29.329	1'39.375P	231,0	16:43'36.528

30°		32 D. BAYLISS					
Lap	Seg.1	Seg.2	Seg.3	Seg.4	Lap Time	km/h	Local Time
1		<b>26.826</b>	<b>24.485</b>	35.170	230,0	16:43'18.025	

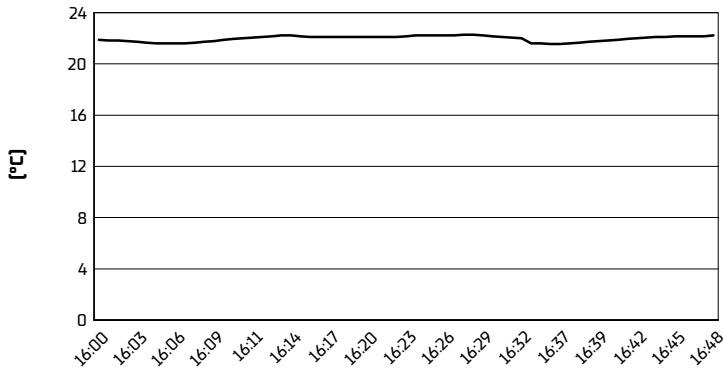
15/07/2022 P = Pits In/Out - C = Lap Time Cancelled

These data/results cannot be reproduced, stored and/or transmitted in whole or in part by any manner of electronic, mechanical, photocopying, recording, broadcasting or otherwise now known or herein after developed without the previous express consent by the copyright owner, except for reproduction in daily press and regular printed publications on sale to the public within 60 days of the event related to those data/results and always provided that copyright symbol appears together as follows below.

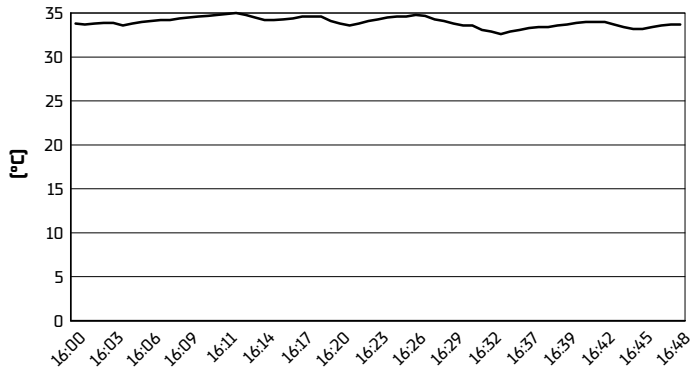
© DORNA WSBK ORGANIZATION Srl 2022

**Prosecco DOC - UK Round, 15-17 July 2022**  
**Weather Report Free Practice 2nd Session**  
Session started 16:00 - Session ended 16:49

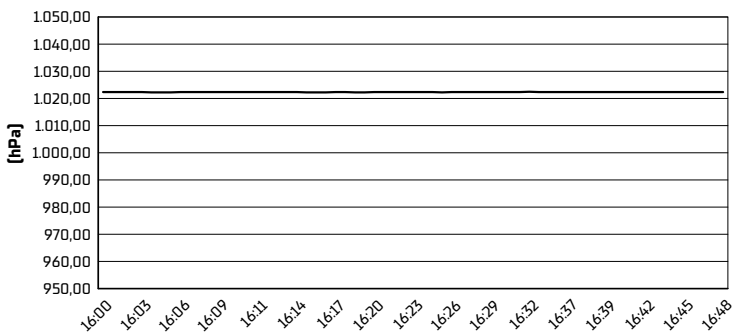
**Air Temperature**



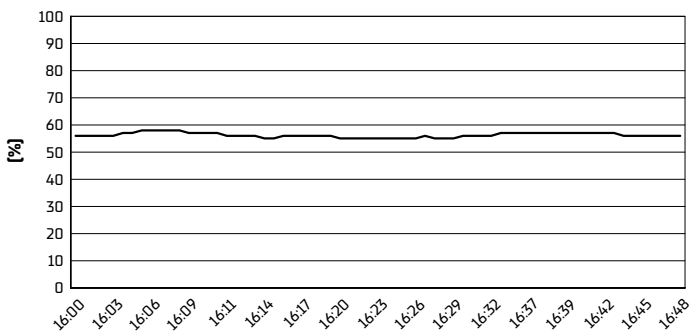
**Track Temperature**



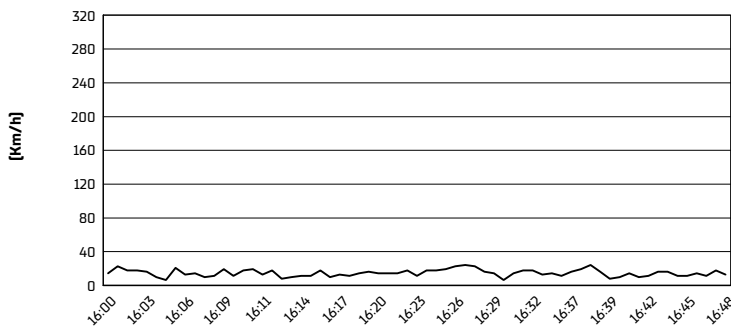
**Air Pressure**



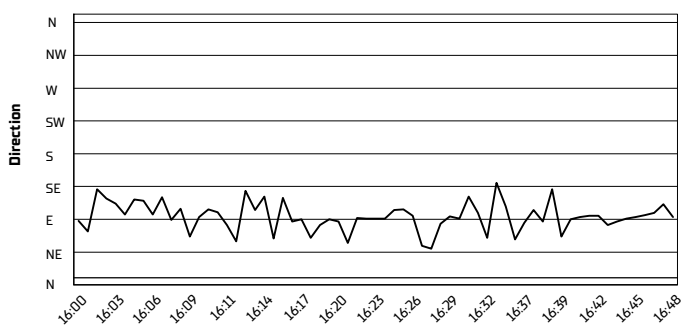
**Humidity**



**Wind Speed**



**Wind Direction**

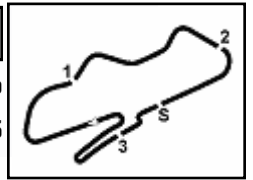


15/07/2022

These data/results cannot be reproduced, stored and/or transmitted in whole or in part by any manner of electronic, mechanical, photocopying, recording, broadcasting or otherwise now known or herein after developed without the previous express consent by the copyright owner, except for reproduction in daily press and regular printed publications on sale to the public within 60 days of the event related to those data/results and always provided that copyright symbol appears together as follows below.

© DORNA WSBK ORGANIZATION Srl 2022




**Prosecco DOC - UK Round, 15-17 July 2022**  
**Best Laps & Speeds**

No.	Rider	Nat	Best Lap		FP1		FP2												
			LL	SPD	LL	SPD	LL	SPD											
1	<b>77 D. AEGERTER</b> Yamaha YZF R6	SUI	<b>1'30.939</b> 44 238,1		1'31.688 22 <b>238,1</b>		<b>1'30.939</b> 22 <b>238,1</b>												
2	<b>28 G. VAN STRAALEN</b> Yamaha YZF R6	NED	<b>1'31.163</b> 44 236,0		1'33.276 21 235,0		<b>1'31.163</b> 23 <b>236,0</b>												
3	<b>11 N. BULEGA</b> Ducati Panigale V2	ITA	<b>1'31.164</b> 36 238,6		1'32.066 19 <b>238,6</b>		<b>1'31.164</b> 17 238,1												
4	<b>16 J. CLUZEL</b> Yamaha YZF R6	FRA	<b>1'31.214</b> 43 240,8		1'31.520 20 <b>240,8</b>		<b>1'31.214</b> 23 237,0												
5	<b>3 R. DE ROSA</b> Ducati Panigale V2	ITA	<b>1'31.262</b> 42 241,3		1'31.499 20 <b>241,3</b>		<b>1'31.262</b> 22 236,0												
6	<b>64 F. CARICASULO</b> Ducati Panigale V2	ITA	<b>1'31.339</b> 42 240,8		1'31.681 22 <b>240,8</b>		<b>1'31.339</b> 20 237,0												
7	<b>7 L. BALDASSARRI</b> Yamaha YZF R6	ITA	<b>1'31.388</b> 45 237,0		1'31.649 25 <b>237,0</b>		<b>1'31.388</b> 20 <b>237,0</b>												
8	<b>61 C. ONCU</b> Kawasaki ZX-6R	TUR	<b>1'31.568</b> 43 237,0		1'32.533 22 <b>237,0</b>		<b>1'31.568</b> 21 235,0												
9	<b>38 H. SOOMER</b> Triumph Street Triple RS	EST	<b>1'31.580</b> 42 236,5		1'31.657 21 <b>236,5</b>		<b>1'31.580</b> 21 234,5												
10	<b>62 S. MANZI</b> Triumph Street Triple RS	ITA	<b>1'31.699</b> 43 241,3		1'32.841 23 238,6		<b>1'31.699</b> 20 <b>241,3</b>												
11	<b>69 T. BOOTH-AMOS</b> Kawasaki ZX-6R	GBR	<b>1'31.748</b> 25 238,1		1'32.806 9 237,6		<b>1'31.748</b> 16 <b>238,1</b>												
12	<b>56 P. SEBESTYEN</b> Yamaha YZF R6	HUN	<b>1'31.866</b> 47 236,0		1'32.674 25 <b>236,0</b>		<b>1'31.866</b> 22 234,5												
13	<b>10 U. ORRADRE</b> Yamaha YZF R6	ESP	<b>1'31.948</b> 43 238,6		1'32.700 21 <b>238,6</b>		<b>1'31.948</b> 22 233,4												
14	<b>17 K. SMITH</b> Yamaha YZF R6	GBR	<b>1'31.973</b> 32 235,5		1'31.973 20 <b>235,5</b>		1'32.155 12 230,9												
15	<b>25 M. BRENNER</b> Yamaha YZF R6	SUI	<b>1'32.154</b> 42 235,5		1'33.029 21 <b>235,5</b>		<b>1'32.154</b> 21 231,9												
16	<b>54 B. SOFUOGLU</b> MV Agusta F3 800 RR	TUR	<b>1'32.216</b> 47 240,8		1'32.867 23 240,2		<b>1'32.216</b> 24 <b>240,8</b>												
17	<b>99 A. HUERTAS</b> Kawasaki ZX-6R	ESP	<b>1'32.246</b> 34 234,0		1'33.053 15 <b>234,0</b>		<b>1'32.246</b> 19 233,4												
18	<b>55 Y. MONTELLA</b> Kawasaki ZX-6R	ITA	<b>1'32.276</b> 41 237,6		1'32.676 24 <b>237,6</b>		<b>1'32.276</b> 17 236,0												
19	<b>94 A. VERDOIA</b> Yamaha YZF R6	FRA	<b>1'32.280</b> 39 238,1		1'32.280 21 <b>238,1</b>		1'32.553 18 229,5												
20	<b>23 I. VINALES</b> Ducati Panigale V2	ESP	<b>1'32.336</b> 41 237,0		1'33.612 21 <b>237,0</b>		<b>1'32.336</b> 20 236,0												
21	<b>4 H. TRUELOVE</b> Yamaha YZF R6	GBR	<b>1'32.404</b> 37 235,5		1'32.811 18 <b>235,5</b>		<b>1'32.404</b> 19 229,5												
22	<b>21 B. CURRIE</b> Kawasaki ZX-6R	AUS	<b>1'32.593</b> 30 239,2		1'32.954 19 <b>239,2</b>		<b>1'32.593</b> 11 231,9												
23	<b>27 M. CASADEI</b> MV Agusta F3 800 RR	ITA	<b>1'32.779</b> 41 237,0		1'33.454 20 236,5		<b>1'32.779</b> 21 <b>237,0</b>												
24	<b>32 D. BAYLISS</b> Ducati Panigale V2	AUS	<b>1'32.894</b> 21 240,2		1'32.894 21 <b>240,2</b>														
25	<b>9 S. JESPERSEN</b> Ducati Panigale V2	DEN	<b>1'32.958</b> 16 237,6		1'32.958 16 <b>237,6</b>														

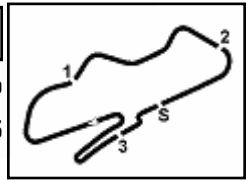
15/07/2022

These data/results cannot be reproduced, stored and/or transmitted in whole or in part by any manner of electronic, mechanical, photocopying, recording, broadcasting or otherwise now known or herein after developed without the previous express consent by the copyright owner, except for reproduction in daily press and regular printed publications on sale to the public within 60 days of the event related to those data/results and always provided that copyright symbol appears together as follows below.

© DORNA WSBK ORGANIZATION Srl 2022

FICR PERUGIA TIMING





Donington Park 4.023 m

**Prosecco DOC - UK Round, 15-17 July 2022**  
**Best Laps & Speeds**

2 / 2

No.	Rider Bike	Nat	Best Lap		FP1		FP2							
			LL	SPD	LL	SPD	LL	SPD						
26	<b>24 L. TACCINI</b> Yamaha YZF R6	ITA	<b>1'33.036</b> 41	239,7	1'34.280 21	<b>239,7</b>	20	237,0						
27	<b>50 O. VOSTATEK</b> Yamaha YZF R6	CZE	<b>1'33.199</b> 44	238,1	1'33.920 22	235,0	22	<b>238,1</b>						
28	<b>22 F. FULIGNI</b> Ducati Panigale V2	ITA	<b>1'33.640</b> 43	238,1	1'34.230 22	<b>238,1</b>	21	234,0						
29	<b>73 M. KOFLER</b> Ducati Panigale V2	AUT	<b>1'33.881</b> 37	239,2	1'34.592 18	<b>239,2</b>	19	233,4						
30	<b>6 J. BUIS</b> Kawasaki ZX-6R	NED	<b>1'34.444</b> 42	235,5	1'35.307 23	<b>235,5</b>	19	235,0						
31	<b>36 S. KROEZE</b> Yamaha YZF R6	NED	<b>1'34.763</b> 44	237,6	1'34.948 24	<b>237,6</b>	20	232,9						
32	<b>52 P. HOBELSBERGER</b> Yamaha YZF R6	GER	<b>1'35.718</b> 7	234,0	1'35.718 7	<b>234,0</b>								

15/07/2022

These data/results cannot be reproduced, stored and/or transmitted in whole or in part by any manner of electronic, mechanical, photocopying, recording, broadcasting or otherwise now known or herein after developed without the previous express consent by the copyright owner, except for reproduction in daily press and regular printed publications on sale to the public within 60 days of the event related to those data/results and always provided that copyright symbol appears together as follows below.

© DORNA WSBK ORGANIZATION Srl 2022

**FIGR PERUGIA TIMING**
