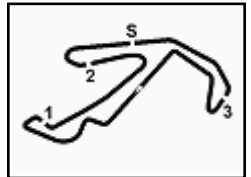


**4****Yamaha R3
731/03**

Misano Circuit Sic 58 4.226 m

**Pirelli Emilia-Romagna Round, 10-12 June 2022
Results Tissot Superpole****1 / 2**

No.	Rider	Nat	Team	Bike	Time	Gap	Rel.	Laps	Speed	
									Avg	Max
1	37 A. PIZZOLI	ITA	Yamaha bLU cRU Italy	Yamaha R3	1'53.655			14	133,858	173,6
2	39 E. VALENTIM	BRA	AD78 Team Brasil bLU cRU	Yamaha R3	1'53.711	0.056	0.056	13	133,792	176,5
3	80 G. MANSO	BRA	AD78 Team Brasil bLU cRU	Yamaha R3	1'53.828	0.173	0.117	13	133,654	175,0
4	13 D. BERGAMINI	ITA	Soradis Yamaha MotoXracing	Yamaha R3	1'54.019	0.364	0.191	13	133,430	173,1
5	45 C. ROUGÉ	FRA	Z&F Gran Prix School	Yamaha R3	1'54.110	0.455	0.091	15	133,324	172,0
6	26 K. FONTAINHA	BRA	AD78 Team Brasil bLU cRU	Yamaha R3	1'54.112	0.457	0.002	13	133,322	175,0
7	69 A. MC DONALD	AUS	ProGP Racing	Yamaha R3	1'54.248	0.593	0.136	14	133,163	175,6
8	9 E. ERCOLANI	ITA	Soradis Yamaha MotoXracing	Yamaha R3	1'54.282	0.627	0.034	14	133,123	172,5
9	4 E. CAZZANIGA	ITA	Gradara Corse	Yamaha R3	1'54.590	0.935	0.308	15	132,766	173,6
10	46 D. NOWAK	POL	Szkopek Team	Yamaha R3	1'54.708	1.053	0.118	14	132,629	174,2
11	89 W. NUGROHO	INA	bLU cRU Yamaha Racing Indonesia	Yamaha R3	1'54.735	1.080	0.027	15	132,598	175,0
12	18 D. PALLADINO	ITA	Team ROC n DEA	Yamaha R3	1'54.780	1.125	0.045	13	132,546	172,0
13	62 F. JURÀNEK	CZE	Movisio Racing	Yamaha R3	1'54.783	1.128	0.003	15	132,542	176,5
14	32 K. KEANKUM	THA	Yamaha bLU cRU Thailand	Yamaha R3	1'54.815	1.160	0.032	15	132,505	175,0
15	23 F. IACOI	ITA	Soradis Yamaha MotoXracing	Yamaha R3	1'54.827	1.172	0.012	15	132,491	173,1
16	88 E. BURR	BRA	AD78 Team Brasil bLU cRU	Yamaha R3	1'54.871	1.216	0.044	13	132,441	172,0
17	7 M. SORRENTI	ITA	HR Sport	Yamaha R3	1'54.881	1.226	0.010	15	132,429	171,2
18	10 G. CARBONNEL	FRA	Yamaha bLU cRU Motor France	Yamaha R3	1'54.966	1.311	0.085	15	132,331	172,0
19	96 M. VICH	ESP	DS Racing School	Yamaha R3	1'54.992	1.337	0.026	14	132,301	174,2
20	73 E. RAPANOTTI	ITA	Gradara Corse	Yamaha R3	1'55.035	1.380	0.043	15	132,252	171,7
21	42 C. GIMENEZ	ESP	ARCO MotoR University Team	Yamaha R3	1'55.140	1.485	0.105	13	132,131	172,2
22	47 J. KUSMIERCZYK	POL	Szkopek Team	Yamaha R3	1'55.216	1.561	0.076	14	132,044	170,3
23	21 J. BRUNO	ITA	R3 bLU cRU Cup Italia	Yamaha R3	1'55.766	2.111	0.550	12	131,417	170,9
24	8 F. FLORIAN	BRA	AD78 Team Brasil bLU cRU	Yamaha R3	1'55.794	2.139	0.028	11	131,385	173,4
25	55 B. CROCKFORD	GBR	Crescent Yamaha	Yamaha R3	1'55.994	2.339	0.200	13	131,159	171,4
26	25 T. HORN	USA	American Racing Academy	Yamaha R3	1'56.618	2.963	0.624	15	130,457	171,7
27	56 V. GELLY	FRA	VAL56 Speed Racing	Yamaha R3	1'57.370	3.715	0.752	13	129,621	165,9
28	77 M. ABDALAZIZ BINLADIN	UAE	AB Racing Team UAE	Yamaha R3	1'57.968	4.313	0.598	12	128,964	168,0

Qualifying Lap Time (115% of 1'53.655): 2'10.704

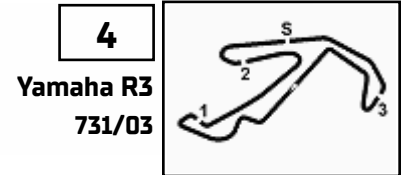
AIR	Humidity:	70%	Temp:	21°C
TRACK	Condition:	Dry	Temp:	22°C

Records	Pole	(SP)	2021	M.Vannucci	1'53.738	133,760	Km/h
	Race	(RC2)	2021	M.Repak	1'53.538	134,000	Km/h
	All Times	(RC2)	2021	M.Repak	1'53.538	134,000	Km/h

Start End The results are provisional until the end of the time limit for protests and appeals
10/06/2022 13:30 14:08 and the completion of the technical checks.

These data/results cannot be reproduced, stored and/or transmitted in whole or in part by any manner of electronic, mechanical, photocopying, recording, broadcasting or otherwise now known or herein after developed without the previous express consent by the copyright owner, except for reproduction in daily press and regular printed publications on sale to the public within 60 days of the event related to those data/results and always provided that copyright symbol appears together as follows below.

© DORNA WSBK ORGANIZATION Srl 2022



Pirelli Emilia-Romagna Round, 10-12 June 2022

Results Tissot Superpole

Misano Circuit Sic 58 4.226 m

2 / 2

Session Highlights

Local Time	No. Rider	Description
13.30.00		Start
13.41.00	39 E. VALENTIM	Current Lap Cancelled - Exceeded Track Limits - Turn 1
13.41.40	46 D. NOWAK	Lap Cancelled [1'57.398] - Exceeded Track Limits - Turn 16
13.42.15	7 M. SORRENTI	Lap Cancelled [1'55.814] - Exceeded Track Limits - Turn 11
13.43.03	37 A. PIZZOLI	Current Lap Cancelled - Exceeded Track Limits - Turn 3
13.43.16	4 E. CAZZANIGA	Lap Cancelled [1'55.082] - Exceeded Track Limits - Turn 11
13.44.57	13 D. BERGAMINI	Current Lap Cancelled - Exceeded Track Limits - Turn 1
13.46.22	18 D. PALLADINO	Current Lap Cancelled - Exceeded Track Limits - Turn 1
13.48.30	9 E. ERCOLANI	Lap Cancelled [2'30.131] - Exceeded Track Limits - Turn 16
13.51.16	77 M. ABDALAZIZ BINLADIN	Crashed - Turn 2
13.53.03	37 A. PIZZOLI	Lap Cancelled [2'02.844] - Exceeded Track Limits - Turn 11
13.53.32	13 D. BERGAMINI	Current Lap Cancelled - Exceeded Track Limits - Turn 1
13.55.38	25 T. HORN	Current Lap Cancelled - Exceeded Track Limits - Turn 1
13.55.38	32 K. KEANKUM	Lap Cancelled [1'55.944] - Exceeded Track Limits - Turn 11
13.57.28	13 D. BERGAMINI	Current Lap Cancelled - Exceeded Track Limits - Turn 1
13.57.30	23 F. IACOI	Current Lap Cancelled - Exceeded Track Limits - Turn 1
13.58.08	32 K. KEANKUM	Lap Cancelled [1'56.448] - Exceeded Track Limits - Turn 11
13.58.19	10 G. CARBONNEL	Lap Cancelled [1'57.540] - Exceeded Track Limits - Turn 11
13.58.48	8 F. FLORIAN	Crashed - Turn 10
13.58.48	21 J. BRUNO	Crashed - Turn 10
14.08.45		End Of Session

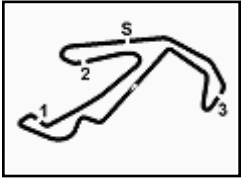
Fastest Laps Sequence

No.	Rider	Nat	Team	Bike	Local Time	Time	Gap	Avg
69	A. MC DONALD	AUS	ProGP Racing	Yamaha R3	13:35'43.774	1'57.146		129,869
62	F. JURÀNEK	CZE	Movisio Racing	Yamaha R3	13:35'45.499	1'55.715	-1.431	131,475
45	C. ROUGÉ	FRA	Z&F Gran Prix School	Yamaha R3	13:35'48.848	1'55.601	-0.114	131,604
9	E. ERCOLANI	ITA	Soradis Yamaha MotoXracing	Yamaha R3	13:37'40.724	1'54.834	-0.767	132,483
32	K. KEANKUM	THA	Yamaha bLU cRU Thailand	Yamaha R3	13:37'41.138	1'54.815	-0.019	132,505
39	E. VALENTIM	BRA	AD78 Team Brasil bLU cRU	Yamaha R3	13:38'52.647	1'54.346	-0.469	133,049
39	E. VALENTIM	BRA	AD78 Team Brasil bLU cRU	Yamaha R3	13:40'46.358	1'53.711	-0.635	133,792
37	A. PIZZOLI	ITA	Yamaha bLU cRU Italy	Yamaha R3	14:01'35.035	1'53.655	-0.056	133,858

10/06/2022 Start 13:30 End 14:08 The results are provisional until the end of the time limit for protests and appeals and the completion of the technical checks.

These data/results cannot be reproduced, stored and/or transmitted in whole or in part by any manner of electronic, mechanical, photocopying, recording, broadcasting or otherwise now known or herein after developed without the previous express consent by the copyright owner, except for reproduction in daily press and regular printed publications on sale to the public within 60 days of the event related to those data/results and always provided that copyright symbol appears together as follows below.

© DORNA WSBK ORGANIZATION Srl 2022

**5****Yamaha R3
731/03**

Misano Circuit Sic 58 4.226 m

**Pirelli Emilia-Romagna Round, 10-12 June 2022
Starting Grid - Race 1 (10 Laps x 4,226 km = 42,260 km)**

1	1	37 PIZZOLI A. Yamaha 1'53.655	2	39 VALENTIM E. Yamaha 1'53.711	3	80 MANSO G. Yamaha 1'53.828
2	4	13 BERGAMINI D. Yamaha 1'54.019	5	45 ROUGÉ C. Yamaha 1'54.110	6	26 FONTAINHA K. Yamaha 1'54.112
3	7	69 MC DONALD A. Yamaha 1'54.248	8	9 ERCOLANI E. Yamaha 1'54.282	9	4 CAZZANIGA E. Yamaha 1'54.590
4	10	46 NOWAK D. Yamaha 1'54.708	11	89 NUGROHO W. Yamaha 1'54.735	12	18 PALLADINO D. Yamaha 1'54.780
5	13	62 JURÁNEK F. Yamaha 1'54.783	14	32 KEANKUM K. Yamaha 1'54.815	15	23 IACOI F. Yamaha 1'54.827
6	16	88 BURR E. Yamaha 1'54.871	17	7 SORRENTI M. Yamaha 1'54.881	18	10 CARBONNEL G. Yamaha 1'54.966
7	19	96 VICH M. Yamaha 1'54.992	20	73 RAPANOTTI E. Yamaha 1'55.035	21	42 GIMENEZ C. Yamaha 1'55.140
8	22	47 KUSMIERCZYK J. Yamaha 1'55.216	23	21 BRUNO J. Yamaha 1'55.766	24	8 FLORIAN F. Yamaha 1'55.794
9	25	55 CROCKFORD B. Yamaha 1'55.994	26	25 HORN T. Yamaha 1'56.618	27	56 GELLY V. Yamaha 1'57.370
10	28	77 ABDALAZIZ BINLAD Yamaha 1'57.968				

10/06/2022 The Race Director

These data/results cannot be reproduced, stored and/or transmitted in whole or in part by any manner of electronic, mechanical, photocopying, recording, broadcasting or otherwise now known or herein after developed without the previous express consent by the copyright owner, except for reproduction in daily press and regular printed publications on sale to the public within 60 days of the event related to those data/results and always provided that copyright symbol appears together as follows below. © DORNA WSBK ORGANIZATION Srl 2022

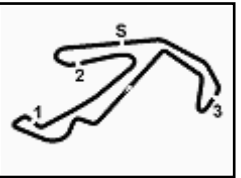
PERUGIA TIMING



6.1

Yamaha R3

731/03



Pirelli Emilia-Romagna Round, 10-12 June 2022

Best Sector & Speed Tissot Superpole

Misano Circuit Sic 58 4.226 m

BEST LAP		
1	37 A. PIZZOLI	Yamaha R3 1'53.655
2	39 E. VALENTIM	Yamaha R3 1'53.711
3	80 G. MANSO	Yamaha R3 1'53.828
4	13 D. BERGAMINI	Yamaha R3 1'54.019
5	45 C. ROUGÉ	Yamaha R3 1'54.110
6	26 K. FONTAINHA	Yamaha R3 1'54.112
7	69 A. MC DONALD	Yamaha R3 1'54.248
8	9 E. ERCOLANI	Yamaha R3 1'54.282
9	4 E. CAZZANIGA	Yamaha R3 1'54.590
10	46 D. NOWAK	Yamaha R3 1'54.708
11	89 W. NUGROHO	Yamaha R3 1'54.735
12	18 D. PALLADINO	Yamaha R3 1'54.780
13	62 F. JURÁNEK	Yamaha R3 1'54.783
14	32 K. KEANKUM	Yamaha R3 1'54.815
15	23 F. IACOI	Yamaha R3 1'54.827
16	88 E. BURR	Yamaha R3 1'54.871
17	7 M. SORRENTI	Yamaha R3 1'54.881
18	10 G. CARBONNEL	Yamaha R3 1'54.966
19	96 M. VICH	Yamaha R3 1'54.992
20	73 E. RAPANOTTI	Yamaha R3 1'55.035
21	42 C. GIMENEZ	Yamaha R3 1'55.140
22	47 J. KUSMIERCZYK	Yamaha R3 1'55.216
23	21 J. BRUNO	Yamaha R3 1'55.766
24	8 F. FLORIAN	Yamaha R3 1'55.794
25	55 B. CROCKFORD	Yamaha R3 1'55.994
26	25 T. HORN	Yamaha R3 1'56.618
27	56 V. GELLY	Yamaha R3 1'57.370
28	77 M. ABDALAZIZ BINLADIN	Yamaha R3 1'57.968

SPEED		
1	62 F. JURÁNEK	Yamaha R3 176.5
2	39 E. VALENTIM	Yamaha R3 176.5
3	69 A. MC DONALD	Yamaha R3 175.6
4	32 K. KEANKUM	Yamaha R3 175.0
5	89 W. NUGROHO	Yamaha R3 175.0
6	26 K. FONTAINHA	Yamaha R3 175.0
7	80 G. MANSO	Yamaha R3 175.0
8	96 M. VICH	Yamaha R3 174.2
9	46 D. NOWAK	Yamaha R3 174.2
10	4 E. CAZZANIGA	Yamaha R3 173.6
11	37 A. PIZZOLI	Yamaha R3 173.6
12	8 F. FLORIAN	Yamaha R3 173.4
13	23 F. IACOI	Yamaha R3 173.1
14	13 D. BERGAMINI	Yamaha R3 173.1
15	9 E. ERCOLANI	Yamaha R3 172.5
16	42 C. GIMENEZ	Yamaha R3 172.2
17	45 C. ROUGÉ	Yamaha R3 172.0
18	18 D. PALLADINO	Yamaha R3 172.0
19	10 G. CARBONNEL	Yamaha R3 172.0
20	88 E. BURR	Yamaha R3 172.0
21	73 E. RAPANOTTI	Yamaha R3 171.7
22	25 T. HORN	Yamaha R3 171.7
23	55 B. CROCKFORD	Yamaha R3 171.4
24	7 M. SORRENTI	Yamaha R3 171.2
25	21 J. BRUNO	Yamaha R3 170.9
26	47 J. KUSMIERCZYK	Yamaha R3 170.3
27	77 M. ABDALAZIZ BINLADIN	Yamaha R3 168.0
28	56 V. GELLY	Yamaha R3 165.9

SEG. 1			SEG. 2			SEG. 3			SEG. 4		
1	26 K. FONTAINHA	28.252	1	39 E. VALENTIM	27.827	1	46 D. NOWAK	32.123	1	80 G. MANSO	24.725
2	4 E. CAZZANIGA	28.335	2	13 D. BERGAMINI	28.055	2	45 C. ROUGÉ	32.131	2	39 E. VALENTIM	24.727
3	80 G. MANSO	28.367	3	80 G. MANSO	28.070	3	37 A. PIZZOLI	32.177	3	32 K. KEANKUM	24.763
4	37 A. PIZZOLI	28.381	4	89 W. NUGROHO	28.205	4	9 E. ERCOLANI	32.201	4	13 D. BERGAMINI	24.801
5	7 M. SORRENTI	28.401	5	37 A. PIZZOLI	28.213	5	96 M. VICH	32.235	5	62 F. JURÁNEK	24.835
6	62 F. JURÁNEK	28.423	6	26 K. FONTAINHA	28.259	6	39 E. VALENTIM	32.254	6	45 C. ROUGÉ	24.860
7	69 A. MC DONALD	28.470	7	9 E. ERCOLANI	28.286	7	10 G. CARBONNEL	32.320	7	69 A. MC DONALD	24.866
8	9 E. ERCOLANI	28.477	8	32 K. KEANKUM	28.298	8	13 D. BERGAMINI	32.328	8	37 A. PIZZOLI	24.884
9	39 E. VALENTIM	28.487	9	69 A. MC DONALD	28.307	9	62 F. JURÁNEK	32.349	9	9 E. ERCOLANI	24.913
10	89 W. NUGROHO	28.489	10	73 E. RAPANOTTI	28.315	10	18 D. PALLADINO	32.358	10	88 E. BURR	24.925
11	73 E. RAPANOTTI	28.496	11	42 C. GIMENEZ	28.329	11	80 G. MANSO	32.369	11	23 F. IACOI	24.931
12	32 K. KEANKUM	28.502	12	8 F. FLORIAN	28.330	12	4 E. CAZZANIGA	32.375	12	26 K. FONTAINHA	24.935
13	13 D. BERGAMINI	28.508	13	62 F. JURÁNEK	28.333	13	26 K. FONTAINHA	32.378	13	7 M. SORRENTI	24.955
14	45 C. ROUGÉ	28.549	14	10 G. CARBONNEL	28.348	14	73 E. RAPANOTTI	32.458	14	89 W. NUGROHO	24.964
15	96 M. VICH	28.573	15	4 E. CAZZANIGA	28.392	15	55 B. CROCKFORD	32.471	15	21 J. BRUNO	24.982
16	23 F. IACOI	28.589	16	96 M. VICH	28.398	16	69 A. MC DONALD	32.494	16	47 J. KUSMIERCZYK	24.997
17	10 G. CARBONNEL	28.609	17	46 D. NOWAK	28.438	17	7 M. SORRENTI	32.500	17	4 E. CAZZANIGA	24.999
18	18 D. PALLADINO	28.641	18	7 M. SORRENTI	28.456	18	23 F. IACOI	32.501	18	10 G. CARBONNEL	25.023
19	42 C. GIMENEZ	28.712	19	23 F. IACOI	28.460	19	21 J. BRUNO	32.509	19	18 D. PALLADINO	25.047
20	47 J. KUSMIERCZYK	28.727	20	47 J. KUSMIERCZYK	28.479	20	89 W. NUGROHO	32.514	20	42 C. GIMENEZ	25.082
21	88 E. BURR	28.756	21	45 C. ROUGÉ	28.559	21	88 E. BURR	32.517	21	73 E. RAPANOTTI	25.106
22	8 F. FLORIAN	28.782	22	18 D. PALLADINO	28.602	22	32 K. KEANKUM	32.598	22	96 M. VICH	25.155
23	46 D. NOWAK	28.850	23	21 J. BRUNO	28.651	23	42 C. GIMENEZ	32.626	23	46 D. NOWAK	25.203
24	55 B. CROCKFORD	28.893	24	88 E. BURR	28.673	24	47 J. KUSMIERCZYK	32.743	24	25 T. HORN	25.218
25	21 J. BRUNO	29.000	25	55 B. CROCKFORD	28.889	25	8 F. FLORIAN	32.839	25	56 V. GELLY	25.293
26	25 T. HORN	29.188	26	25 T. HORN	29.017	26	25 T. HORN	32.997	26	8 F. FLORIAN	25.295
27	56 V. GELLY	29.256	27	56 V. GELLY	29.335	27	77 M. ABDALAZIZ BINLAD	33.198	27	55 B. CROCKFORD	25.382
28	77 M. ABDALAZIZ BINLAD	29.475	28	77 M. ABDALAZIZ BINLAD	29.342	28	56 V. GELLY	33.486	28	77 M. ABDALAZIZ BINLAD	25.553

10/06/2022

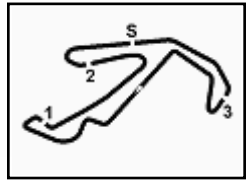
These data/results cannot be reproduced, stored and/or transmitted in whole or in part by any manner of electronic, mechanical, photocopying, recording, broadcasting or otherwise now known or herein after developed without the previous express consent by the copyright owner, except for reproduction in daily press and regular printed publications on sale to the public within 60 days of the event related to those data/results and always provided that copyright symbol appears together as follows below.

© DORNA WSBK ORGANIZATION Srl 2022

PERUGIA TIMING



6.2

Yamaha R3
731/03

Pirelli Emilia-Romagna Round, 10-12 June 2022

Ideal Time Tissot Superpole

Misano Circuit Sic 58 4.226 m

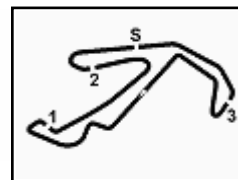
No.	Rider	Nat	Bike	Seg. 1	Seg. 2	Seg. 3	Seg. 4	Ideal Time		
				Diff. 1	Diff. 2	Diff. 3	Diff. 4	Best Lap	Pos.	Diff.
1	39 E. VALENTIM	BRA	Yamaha R3	28.487 +0.006	27.827 +0.252	32.254 +0.158	24.727	1'53.295 1'53.711	2	0.416
2	80 G. MANSO	BRA	Yamaha R3	28.367 +0.056	28.070	32.369	24.725 +0.241	1'53.531 1'53.828	3	0.297
3	37 A. PIZZOLI	ITA	Yamaha R3	28.381	28.213	32.177	24.884	1'53.655 1'53.655	1	
4	13 D. BERGAMINI	ITA	Yamaha R3	28.508	28.055 +0.127	32.328	24.801 +0.200	1'53.692 1'54.019	4	0.327
5	26 K. FONTAINHA	BRA	Yamaha R3	28.252 +0.231	28.259 +0.006	32.378 +0.051	24.935	1'53.824 1'54.112	6	0.288
6	9 E. ERCOLANI	ITA	Yamaha R3	28.477 +0.405	28.286	32.201	24.913	1'53.877 1'54.282	8	0.405
7	62 F. JURÁNEK	CZE	Yamaha R3	28.423 +0.213	28.333	32.349 +0.272	24.835 +0.358	1'53.940 1'54.783	13	0.843
8	45 C. ROUGÉ	FRA	Yamaha R3	28.549 +0.011	28.559	32.131	24.860	1'54.099 1'54.110	5	0.011
9	4 E. CAZZANIGA	ITA	Yamaha R3	28.335 +0.270	28.392	32.375 +0.219	24.999	1'54.101 1'54.590	9	0.489
10	69 A. MC DONALD	AUS	Yamaha R3	28.470 +0.104	28.307	32.494 +0.007	24.866	1'54.137 1'54.248	7	0.111
11	32 K. KEANKUM	THA	Yamaha R3	28.502 +0.348	28.298 +0.142	32.598 +0.019	24.763 +0.145	1'54.161 1'54.815	14	0.654
12	89 W. NUGROHO	INA	Yamaha R3	28.489	28.205 +0.143	32.514	24.964 +0.420	1'54.172 1'54.735	11	0.563
13	10 G. CARBONNEL	FRA	Yamaha R3	28.609	28.348 +0.196	32.320 +0.470	25.023	1'54.300 1'54.966	18	0.666
14	7 M. SORRENTI	ITA	Yamaha R3	28.401 +0.306	28.456 +0.092	32.500	24.955 +0.171	1'54.312 1'54.881	17	0.569
15	96 M. VICH	ESP	Yamaha R3	28.573 +0.113	28.398 +0.187	32.235 +0.308	25.155 +0.023	1'54.361 1'54.992	19	0.631
16	73 E. RAPANOTTI	ITA	Yamaha R3	28.496 +0.384	28.315 +0.112	32.458 +0.109	25.106 +0.055	1'54.375 1'55.035	20	0.660
17	23 F. IACOI	ITA	Yamaha R3	28.589	28.460 +0.270	32.501 +0.076	24.931	1'54.481 1'54.827	15	0.346
18	46 D. NOWAK	POL	Yamaha R3	28.850	28.438	32.123	25.203 +0.094	1'54.614 1'54.708	10	0.094
19	18 D. PALLADINO	ITA	Yamaha R3	28.641 +0.132	28.602	32.358	25.047	1'54.648 1'54.780	12	0.132
20	42 C. GIMENEZ	ESP	Yamaha R3	28.712 +0.391	28.329	32.626	25.082	1'54.749 1'55.140	21	0.391
21	88 E. BURR	BRA	Yamaha R3	28.756	28.673	32.517	24.925	1'54.871 1'54.871	16	
22	47 J. KUSMIERCZYK	POL	Yamaha R3	28.727	28.479 +0.025	32.743 +0.245	24.997	1'54.946 1'55.216	22	0.270
23	21 J. BRUNO	ITA	Yamaha R3	29.000 +0.276	28.651 +0.174	32.509	24.982 +0.174	1'55.142 1'55.766	23	0.624
24	8 F. FLORIAN	BRA	Yamaha R3	28.782	28.330 +0.160	32.839	25.295 +0.388	1'55.246 1'55.794	24	0.548
25	55 B. CROCKFORD	GBR	Yamaha R3	28.893	28.889 +0.278	32.471 +0.081	25.382	1'55.635 1'55.994	25	0.359
26	25 T. HORN	USA	Yamaha R3	29.188 +0.044	29.017	32.997 +0.154	25.218	1'56.420 1'56.618	26	0.198
27	56 V. GELLY	FRA	Yamaha R3	29.256	29.335	33.486	25.293	1'57.370 1'57.370	27	
28	77 M. ABDALAZIZ BINLAD	UAE	Yamaha R3	29.475	29.342 +0.019	33.198 +0.381	25.553	1'57.568 1'57.968	28	0.400
Overall Ideal Time				28.252	27.827	32.123	24.725	1'52.927		

10/06/2022

These data/results cannot be reproduced, stored and/or transmitted in whole or in part by any manner of electronic, mechanical, photocopying, recording, broadcasting or otherwise now known or herein after developed without the previous express consent by the copyright owner, except for reproduction in daily press and regular printed publications on sale to the public within 60 days of the event related to those data/results and always provided that copyright symbol appears together as follows below.

© DORNA WSBK ORGANIZATION Srl 2022

PERUGIA TIMING

**6.3****Yamaha R3**
731/03

Misano Circuit Sic 58.4.226 m

4 / 4

Pirelli Emilia-Romagna Round, 10-12 June 2022
Chronological Analysis Tissot Superpole

Lap	Seg.1	Seg.2	Seg.3	Seg.4	Lap Time	km/h	Local Time
13	29.103	28.329	32.626	25.082	1'55.140	169,5	13:59'15.949
14	28.725	28.748	32.855	25.119	1'55.447	169,3	14:01'11.396

22° 47 J. KUSMIERCZYK (1'55.216)							
Lap	Seg.1	Seg.2	Seg.3	Seg.4	Lap Time	km/h	Local Time
1							13:31'41.205
2	1'14.546	33.019	34.344	26.048	2'47.957P	161,7	13:34'29.162
3	29.732	29.316	33.788	25.587	1'58.423	163,9	13:36'27.585
4	29.307	28.708	32.743	25.240	1'55.998	169,8	13:38'23.583
5	29.018	29.451	33.168	25.403	1'57.040	166,9	13:40'20.623
6	29.044	28.736	33.181	25.211	1'56.172	166,4	13:42'16.795
7	29.337	28.728	33.306	27.293	1'58.664	165,6	13:44'15.459
8	29.291	28.785	33.058	25.381	1'56.515	167,4	13:46'11.974
9	29.203	30.999	36.503	1'17.279	2'53.984P	152,8	13:49'05.958
10	48.035	29.543	33.320	25.930	2'16.828P	167,2	13:51'22.786
11	29.653	28.996	33.132	25.610	1'57.391	166,4	13:53'20.177
12	31.775	30.514	34.804	25.920	2'03.013	159,3	13:55'23.190
13	29.061	29.335	33.027	26.115	1'57.538	170,3	13:57'20.728
14	28.960	28.479	32.865	25.170	1'55.474	168,5	13:59'16.202
15	28.727	28.504	32.988	24.997	1'55.216	167,2	14:01'11.418

23° 21 J. BRUNO (1'55.766)							
Lap	Seg.1	Seg.2	Seg.3	Seg.4	Lap Time	km/h	Local Time
1							13:31'51.126
2	1'07.411	30.750	33.979	25.975	2'38.115P	166,2	13:34'29.241
3	29.881	29.352	33.815	25.796	1'58.844	170,1	13:36'28.085
4	29.276	28.825	32.509	25.156	1'55.766	170,9	13:38'23.851
5	29.000	29.256	32.886	25.278	1'56.420	168,2	13:40'20.271
6	29.189	29.021	32.910	25.197	1'56.317	169,0	13:42'16.588
7	29.260	29.124	32.955	25.937	1'57.276	167,7	13:44'13.864
8	29.346	29.043	33.063	24.982	1'56.434	166,2	13:46'10.298
9	29.149	29.026	32.867	25.360	1'56.402	166,4	13:48'06.700
10	29.108	30.691	33.905	1'24.059	2'57.763P	162,7	13:51'04.463
11	47.419	29.716	33.522	25.440	2'16.097P	165,9	13:53'20.560
12	30.726	29.923	33.051	25.828	1'59.528	169,3	13:55'20.088
13	29.191	29.008	33.611	25.525	1'57.335	168,8	13:57'17.423

24° 8 F. FLORIAN (1'55.794)							
Lap	Seg.1	Seg.2	Seg.3	Seg.4	Lap Time	km/h	Local Time
1							13:32'00.599
2	1'04.544	32.941	48.090	31.404	2'56.979P	116,1	13:34'57.578
3	29.977	28.762	33.438	26.419	1'58.596	169,0	13:36'56.174
4	29.045	28.791	33.254	25.295	1'56.385	166,7	13:38'52.559
5	29.046	28.491	32.880	25.532	1'55.949	169,0	13:40'48.508
6	28.978	28.875	33.359	25.927	1'57.139	166,4	13:42'45.647
7	29.036	28.753	32.906	25.957	1'56.652	168,8	13:44'42.299
8	29.421	30.806	40.729	2'32.312	4'13.268P	163,4	13:48'55.567
9	51.034	39.543	33.419	25.704	2'29.700P	173,4	13:51'25.267
10	28.782	28.490	32.839	25.683	1'55.794	172,8	13:53'21.061
11	30.757	30.248	32.953	25.781	1'59.739	170,6	13:55'20.800
12	29.173	28.521	33.715	25.801	1'57.210	172,8	13:57'18.010

25° 55 B. CROCKFORD (1'55.994)							
Lap	Seg.1	Seg.2	Seg.3	Seg.4	Lap Time	km/h	Local Time
1							13:31'38.196
2	48.528	30.965	34.125	26.319	2'19.937P	164,9	13:33'58.133
3	30.135	29.396	33.422	25.736	1'58.689	166,2	13:35'56.822
4	30.124	30.092	34.892	1'10.690	2'45.798P	163,4	13:38'42.620
5	45.294	29.538	33.274	26.187	2'14.293P	166,7	13:40'56.913
6	29.137	29.193	33.024	55.183	2'26.537P	167,2	13:43'23.450
7	46.722	29.314	34.373	52.468	2'42.877P	166,7	13:46'06.327
8	47.060	32.381	33.520	25.737	2'18.698P	165,4	13:48'25.025
9	29.305	29.144	33.090	25.491	1'57.030	166,2	13:50'22.055

26° 25 T. HORN (1'56.618)							
Lap	Seg.1	Seg.2	Seg.3	Seg.4	Lap Time	km/h	Local Time
1							13:31'18.127
2	59.577	30.356	35.593	27.454	2'32.980P	165,6	13:33'51.107
3	30.241	29.551	33.502	25.867	1'59.161	169,0	13:35'50.268
4	29.768	29.413	32.997	25.607	1'57.785	169,8	13:37'48.053
5	29.708	29.131	32.998	25.372	1'57.209	169,0	13:39'45.262
6	29.626	29.077	33.192	25.499	1'57.394	166,7	13:41'42.656
7	29.479	29.140	33.038	25.600	1'57.257	168,0	13:43'39.913
8	29.707	29.101	33.227	25.364	1'57.399	166,4	13:45'37.312
9	29.188	29.076	33.256	25.309	1'58.829	166,7	13:47'34.141
10	29.232	29.017	33.151	25.218	1'56.618	168,0	13:49'30.759
11	29.476	29.385	33.194	25.715	1'57.770	169,5	13:51'28.529
12	29.794	29.607	33.182	25.406	1'57.989	170,3	13:53'26.518
13	29.239	29.367	33.619	26.209	1'58.434	171,7	13:55'24.952
14	33.837	29.337	33.781	25.796	2'02.751C	165,9	13:57'27.703
15	29.555	29.393	34.322	26.023	1'59.293	166,4	13:59'26.996
16	29.758	29.146	33.741	25.648	1'58.293	165,6	14:01'25.289

27° 56 V. GELLY (1'57.370)							
Lap	Seg.1	Seg.2	Seg.3	Seg.4	Lap Time	km/h	Local Time
1							13:31'43.053
2	57.533	31.797	35.277	27.403	2'32.010P	161,7	13:34'15.063
3	30.499	29.926	34.355	26.254	2'01.034	163,4	13:36'16.097
4	29.831	29.961	33.844	26.206	1'59.842	163,9	13:38'15.939
5	29.727	29.739	33.973	1'48.229	3'21.668P	163,9	13:41'37.607
6	47.383	30.452	33.946	26.373	2'18.154P	163,6	13:43'55.761
7	29.901	29.745	33.644	26.106	1'59.396	164,1	13:45'55.157
8	29.768	29.577	33.665	25.974	1'58.984	164,1	13:47'54.141
9	29.553	29.545	33.771	25.748	1'58.617	164,1	13:49'52.758
10	30.377	35.350	33.489	25.887	2'05.103	165,9	13:51'57.861
11	29.361	29.712	34.181	25.955	1'59.209	164,6	13:53'57.070
12	30.178	29.950	33.965	1'43.356	3'17.449P	163,1	13:57'14.519
13	46.561	29.988	34.710	26.578	2'17.837P	163,6	13:59'32.356
14	29.256	29.335	33.486	25.293	1'57.370	164,6	14:01'29.726

28° 77 M. ABDALAZIZ BINLADIN (1'57.968)							
Lap	Seg.1	Seg.2	Seg.3	Seg.4	Lap Time	km/h	Local Time
1							13:31'39.059
2	48.233	30.614	34.361	26.502	2'19.710P	164,9	13:33'58.769
3	30.059	29.611	33.198	25.904	1'58.772	168,0	13:35'57.541
4	29.814	29.894	34.118	25.731	1'59.557	164,1	13:37'57.098
5	29.963	29.518	35.388	56.420	2'31.289P	160,0	13:40'28.387
6	49.567	29.631	33.358	25.767	2'18.323P	166,7	13:42'46.710
7	29.793	29.485	33.367	25.779	1'58.424	166,9	13:44'45.134
8	29.475	29.361	33.579	25.553	1'57.968	164,9	13:46'43.102
9	29.499	29.694	34.621	26.561	2'00.375	157,4	13:48'43.477
10	29.560	29.831	34.595	28.447	2'02.433	153,8	13:50'45.910
11					6'44.370P		13:57'30.280
12	47.640	30.561	35.715	26.511	2'20.427P	162,7	13:59'50.707
13	29.929	29.342	41.247	26.102	2'06.620	144,6	14:01'57.327

10/06/2022 P = Pits In/Out - C = Lap Time Cancelled

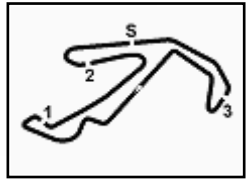
These data/results cannot be reproduced, stored and/or transmitted in whole or in part by any manner of electronic, mechanical, photocopying, recording, broadcasting or otherwise now known or herein after developed without the previous express consent by the copyright owner, except for reproduction in daily press and regular printed publications on sale to the public within 60 days of the event related to those data/results and always provided that copyright symbol appears together as follows below.

© DORNA WSBK ORGANIZATION Srl 2022



6.4

Yamaha R3
731/03



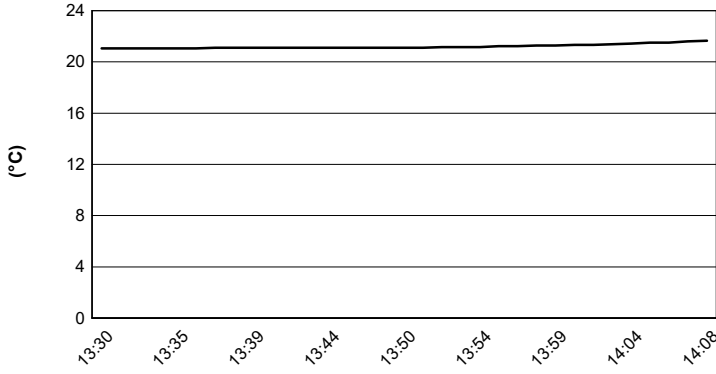
Misano Circuit Sic 58 4.226 m

Pirelli Emilia-Romagna Round, 10-12 June 2022

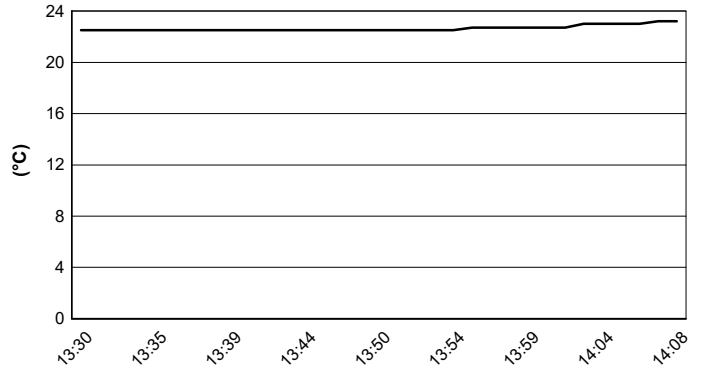
Weather Report Tissot Superpole

Session started 13:30 - Session ended 14:08

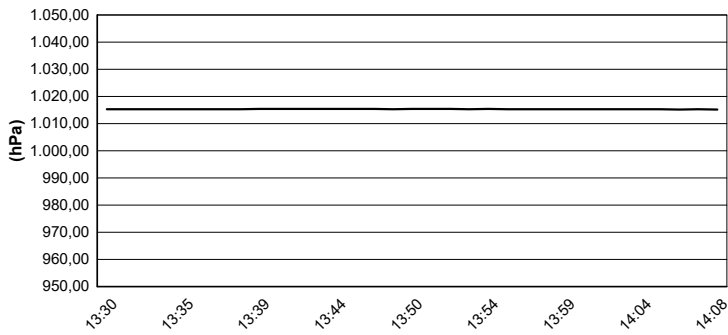
Air Temperature



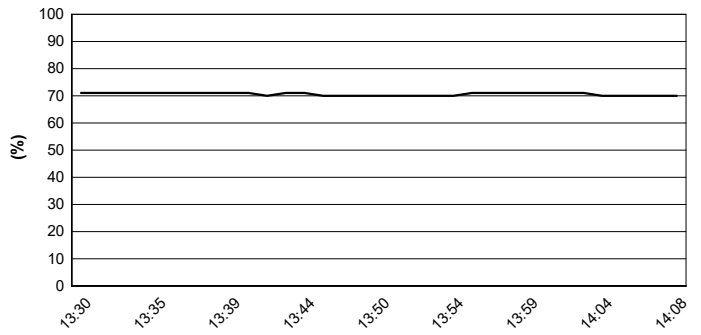
Track Temperature



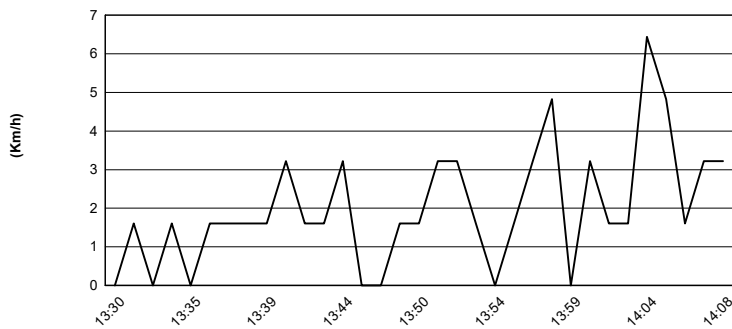
Air Pressure



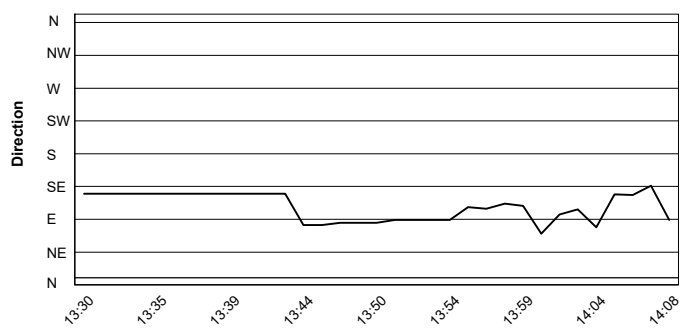
Humidity



Wind Speed



Wind Direction



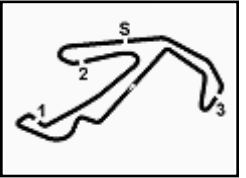
10/06/2022

These data/results cannot be reproduced, stored and/or transmitted in whole or in part by any manner of electronic, mechanical, photocopying, recording, broadcasting or otherwise now known or herein after developed without the previous express consent by the copyright owner, except for reproduction in daily press and regular printed publications on sale to the public within 60 days of the event related to those data/results and always provided that copyright symbol appears together as follows below.

© DORNA WSBK ORGANIZATION Srl 2022



6.5

Yamaha R3
731/03

Misano Circuit Sic 58 4.226 m

Pirelli Emilia-Romagna Round, 10-12 June 2022
Best Lap & Speed

1 / 2

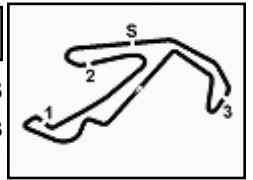
No.	Rider Bike	Nat	Best Lap		FP1		SP												
			LL	SPD	LL	SPD	LL	SPD											
1	37 A. PIZZOLI Yamaha R3	ITA	1'53.655	28 173,6	1'56.097	14 169,0	1'53.655	14 173,6											
2	39 E. VALENTIM Yamaha R3	BRA	1'53.711	26 176,4	1'55.367	13 173,6	1'53.711	13 176,4											
3	80 G. MANSO Yamaha R3	BRA	1'53.828	24 175,0	1'56.117	11 170,8	1'53.828	13 175,0											
4	13 D. BERGAMINI Yamaha R3	ITA	1'54.019	26 173,0	1'55.779	13 169,8	1'54.019	13 173,0											
5	45 C. ROUGÉ Yamaha R3	FRA	1'54.110	30 171,9	1'55.934	15 167,7	1'54.110	15 171,9											
6	26 K. FONTAINHA Yamaha R3	BRA	1'54.112	27 175,0	1'55.872	14 172,5	1'54.112	13 175,0											
7	69 A. MC DONALD Yamaha R3	AUS	1'54.248	27 175,6	1'55.767	13 170,0	1'54.248	14 175,6											
8	9 E. ERCOLANI Yamaha R3	ITA	1'54.282	26 172,5	1'55.281	12 170,3	1'54.282	14 172,5											
9	4 E. CAZZANIGA Yamaha R3	ITA	1'54.590	25 173,6	1'56.697	10 169,8	1'54.590	15 173,6											
10	46 D. NOWAK Yamaha R3	POL	1'54.708	26 174,1	2'00.098	12 171,1	1'54.708	14 174,1											
11	89 W. NUGROHO Yamaha R3	INA	1'54.735	29 175,0	1'57.510	14 170,8	1'54.735	15 175,0											
12	18 D. PALLADINO Yamaha R3	ITA	1'54.780	27 171,9	1'55.533	14 169,2	1'54.780	13 171,9											
13	62 F. JURÁNEK Yamaha R3	CZE	1'54.783	29 176,4	1'56.175	14 169,0	1'54.783	15 176,4											
14	32 K. KEANKUM Yamaha R3	THA	1'54.815	28 175,0	1'56.044	13 173,9	1'54.815	15 175,0											
15	23 F. IACOI Yamaha R3	ITA	1'54.827	26 173,0	1'56.866	11 170,8	1'54.827	15 173,0											
16	88 E. BURR Yamaha R3	BRA	1'54.871	26 171,9	1'57.002	13 171,7	1'54.871	13 171,9											
17	7 M. SORRENTI Yamaha R3	ITA	1'54.881	28 171,1	1'56.593	13 170,0	1'54.881	15 171,1											
18	10 G. CARBONNEL Yamaha R3	FRA	1'54.966	29 171,9	1'55.846	14 170,3	1'54.966	15 171,9											
19	96 M. VICH Yamaha R3	ESP	1'54.992	27 174,1	1'56.229	13 170,8	1'54.992	14 174,1											
20	73 E. RAPANOTTI Yamaha R3	ITA	1'55.035	24 171,7	1'57.832	9 166,6	1'55.035	15 171,7											
21	42 C. GIMENEZ Yamaha R3	ESP	1'55.140	28 172,2	1'56.584	15 169,2	1'55.140	13 172,2											
22	47 J. KUSMIERCZYK Yamaha R3	POL	1'55.216	28 170,3	1'57.800	14 170,3	1'55.216	14 170,3											
23	21 J. BRUNO Yamaha R3	ITA	1'55.766	22 170,8	1'57.666	10 167,9	1'55.766	12 170,8											
24	8 F. FLORIAN Yamaha R3	BRA	1'55.794	24 173,3	1'56.497	13 170,0	1'55.794	11 173,3											
25	55 B. CROCKFORD Yamaha R3	GBR	1'55.994	27 171,4	1'57.972	14 171,1	1'55.994	13 171,4											

10/06/2022

These data/results cannot be reproduced, stored and/or transmitted in whole or in part by any manner of electronic, mechanical, photocopying, recording, broadcasting or otherwise now known or herein after developed without the previous express consent by the copyright owner, except for reproduction in daily press and regular printed publications on sale to the public within 60 days of the event related to those data/results and always provided that copyright symbol appears together as follows below.

© DORNA WSBK ORGANIZATION Srl 2022

PERUGIA TIMING

**6.5****Yamaha R3**
731/03

Misano Circuit Sic 58 4.226 m

Pirelli Emilia-Romagna Round, 10-12 June 2022
Best Lap & Speed

2 / 2

No.	Rider Bike	Nat	Best Lap		FP1		SP								
			LL	SPD	LL	SPD	LL	SPD							
26	T. HORN Yamaha R3	USA	1'56.618		1'59.195		1'56.618								
			30	171,7	15	167,7	15	171,7							
27	V. GELLY Yamaha R3	FRA	1'57.370		2'00.577		1'57.370								
			24	167,9	11	167,9	13	165,9							
28	M. ABDALAZIZ BINLADIN Yamaha R3	UAE	1'57.968		2'02.031		1'57.968								
			24	167,9	12		12	167,9							

10/06/2022

These data/results cannot be reproduced, stored and/or transmitted in whole or in part by any manner of electronic, mechanical, photocopying, recording, broadcasting or otherwise now known or herein after developed without the previous express consent by the copyright owner, except for reproduction in daily press and regular printed publications on sale to the public within 60 days of the event related to those data/results and always provided that copyright symbol appears together as follows below.

© DORNA WSBK ORGANIZATION Srl 2022

PERUGIA TIMING