

Pirelli Indonesian Round, 11-13 November 2022
Rider's Performance

Pertamina Mandalika Circuit 4.300 m

| Rider | Points | Points From First | Points From Previous | April 10 | | April 24 | | May 22 | | June 12 | | July 17 | | July 31 | | September 11 | | September 25 | | October 9 | | October 23 | | November 13 | | November 20 | | | | | | | | | | | | |
|-----------------|--------|-------------------|----------------------|----------|-----|----------|-----|--------|-----|---------|-----|---------|-----|---------|-----|--------------|-----|--------------|-----|-----------|-----|------------|-----|-------------|-----|-------------|-----|----|-----|----|----|----|----|----|----|----|--|--|
| | | | | G | 1 2 | G | 1 2 | G | 1 2 | G | 1 2 | G | 1 2 | G | 1 2 | G | 1 2 | G | 1 2 | G | 1 2 | G | 1 2 | G | 1 2 | G | 1 2 | G | 1 2 | | | | | | | | | |
| 1 AEGERTER | 462 | | | 2 | 2 | 1 | 1 | 1 | 1 | 1 | 1 | 1 | 1 | 1 | 1 | 1 | 1 | 1 | 1 | 1 | 1 | 1 | 1 | 1 | 1 | 1 | 1 | 1 | | | | | | | | | | |
| 2 BALDASSARRI | 359 | 103 | | 1 | 1 | 2 | 6 | Rt | 2 | 4 | 2 | 3 | 3 | 2 | 2 | 7 | 2 | 2 | 1 | 1 | 1 | 2 | 1 | 5 | 4 | 2 | 4 | 7 | 2 | 7 | 4 | 9 | 3 | 8 | Rt | 9 | | |
| 3 ONCU | 248 | 214 | 111 | 3 | 3 | Rt | 2 | Rt | 3 | 8 | 4 | 5 | 7 | 4 | 5 | 12 | 21 | 4 | 7 | 4 | 6 | 2 | 3 | 2 | 14 | 9 | 3 | 14 | 4 | 7 | 2 | 3 | 3 | | | | | |
| 4 BULEGA | 209 | 253 | 39 | 4 | 5 | 3 | 3 | 3 | 4 | 2 | 3 | Rt | 2 | 3 | 3 | 2 | Rt | 3 | 3 | 9 | 2 | 4 | 11 | 3 | 7 | Rt | 14 | 15 | 10 | 7 | 11 | 8 | 4 | 6 | 7 | | | |
| 5 MANZI | 207 | 255 | 2 | 13 | 7 | 8 | 8 | Rt | 6 | 10 | Rt | Rt | 9 | 5 | 4 | 18 | 6 | 5 | 21 | 2 | 3 | 16 | 16 | 7 | 17 | Rt | 3 | 4 | 1 | Rt | 9 | 7 | 5 | 12 | 7 | 2 | | |
| 6 CARICASULO | 193 | 269 | 14 | 7 | 8 | 12 | 4 | 5 | 25 | 7 | 5 | Rt | 4 | Rt | 6 | 5 | Rt | 4 | 2 | Rt | 6 | 1 | Rt | 9 | 3 | 4 | 6 | 2 | 3 | 4 | 2 | 3 | 2 | 5 | 2 | 5 | | |
| 7 TUULI | 152 | 310 | 41 | 10 | 6 | 5 | 12 | 6 | 7 | 9 | Rt | | | | | 17 | 6 | 10 | 11 | 6 | 11 | 10 | 6 | 5 | 5 | 5 | Rt | 5 | 5 | 4 | 1 | 1 | Rt | | | | | |
| 8 MONTELLA | 135 | 327 | 17 | 9 | Rt | 7 | 18 | 12 | 9 | 12 | 6 | 4 | 5 | 6 | 7 | 8 | 4 | Rt | 7 | Rt | Rt | 14 | 5 | 10 | 9 | 13 | 8 | 10 | 13 | Rt | 16 | 8 | Rt | 6 | 5 | 6 | | |
| 9 CLUZEL | 127 | 335 | 8 | 8 | 19 | 6 | 10 | 4 | Rt | 5 | Rt | Rt | 8 | 7 | 9 | 6 | Rt | | | | | 10 | 10 | 2 | 16 | 8 | 15 | 3 | 7 | 6 | 6 | 6 | 6 | 9 | 8 | 10 | | |
| 10 DE ROSA | 127 | 335 | 0 | 21 | 16 | 9 | 13 | 9 | 15 | 21 | 22 | Rt | 14 | 22 | 10 | 11 | 3 | 6 | 9 | Rt | 20 | 13 | 12 | 14 | 6 | 12 | Rt | 9 | 6 | 2 | 3 | 2 | Rt | 7 | 9 | 4 | | |
| 11 VAN STRAALEN | 111 | 351 | 16 | 5 | 4 | 4 | 5 | 2 | Rt | 3 | 7 | 8 | 12 | Rt | 19 | 3 | Rt | Rt | 6 | 5 | 15 | 6 | 2 | Rt | 8 | 9 | Rt | 6 | 12 | Rt | 8 | Rt | 11 | 14 | Rt | 16 | | |
| 12 HUERTAS | 110 | 352 | 1 | 14 | 9 | 11 | 16 | 11 | Rt | 16 | 8 | 7 | 23 | 10 | 15 | 16 | 18 | 7 | 8 | 8 | 7 | 3 | 8 | 12 | 5 | 7 | 10 | 19 | Rt | 12 | Rt | 10 | 13 | 10 | 12 | | | |
| 13 SOOMER | 94 | 368 | 16 | 12 | 11 | 10 | 14 | 7 | 5 | 14 | Rt | 12 | 27 | 11 | 12 | 9 | 7 | Rt | 16 | 19 | 9 | 26 | 15 | Rt | 22 | 18 | 13 | 8 | 8 | 8 | 11 | 10 | Rt | 10 | Rt | 8 | | |
| 14 SOFUOGLU | 72 | 390 | 22 | 25 | 12 | 14 | 26 | 15 | 10 | 27 | 23 | 14 | 22 | 21 | 18 | 13 | 15 | Rt | 13 | 7 | 5 | 18 | Rt | | 13 | 5 | 7 | 12 | 11 | 5 | | | | | | | | |
| 15 VERDOIA | 59 | 403 | 13 | 15 | 15 | 16 | 15 | | | 6 | 9 | | 11 | 13 | 11 | 12 | 8 | 9 | 5 | Rt | 12 | 9 | 19 | 13 | 19 | 14 | 16 | 16 | 21 | 11 | 15 | Rt | 9 | 16 | 12 | 13 | | |
| 16 BAYLISS | 53 | 409 | 6 | 26 | 21 | 19 | 19 | 14 | 11 | 17 | 12 | 6 | 10 | 23 | Rt | 20 | 11 | 13 | 23 | 13 | Rt | 8 | 9 | 8 | 23 | 15 | Rt | 22 | 20 | 16 | 17 | 15 | Rt | 18 | 14 | 14 | | |
| 17 DEBISE | 43 | 419 | 10 | | | | | | | | | | | | | | | | 10 | 4 | 8 | 15 | 7 | 4 | | | | | | | | | | | | | | |
| 18 TACCINI | 35 | 427 | 8 | 22 | 18 | Rt | 21 | 10 | 13 | 23 | 14 | | 24 | 14 | Rt | 27 | 13 | 15 | 25 | 16 | 13 | 21 | 14 | Rt | 26 | 11 | 9 | 15 | Rt | | | | | 19 | 15 | 18 | | |
| 19 SMITH | 35 | 427 | 0 | 18 | 20 | 20 | 17 | 16 | 8 | 19 | 11 | 2 | 25 | Rt | 16 | 19 | 14 | Rt | 24 | 22 | Rt | 17 | 17 | 24 | | | | | | | | | | | | | | |
| 20 SEBESTYEN | 34 | 428 | 1 | 17 | 14 | Rt | 9 | 22 | | 15 | 24 | 13 | 16 | 12 | 14 | 14 | Rt | 16 | 15 | 14 | 11 | 12 | 13 | 20 | 15 | Rt | 20 | 17 | 14 | Rt | 10 | 12 | 12 | 17 | 13 | 22 | | |
| 21 BRENNER | 32 | 430 | 2 | 6 | 17 | Rt | 11 | Rt | 12 | 18 | 15 | 18 | 6 | 9 | 13 | 10 | 10 | Rt | 29 | 20 | 14 | | | | 12 | 17 | 11 | 13 | Rt | 13 | 21 | Rt | 15 | 16 | 19 | | | |
| 22 JESPERSEN | 31 | 431 | 1 | | | | | | | 28 | 13 | Rt | | | | 24 | 9 | 10 | | | | 27 | 21 | 16 | 11 | 10 | 12 | 23 | 16 | 12 | | | 15 | Rt | 15 | | | |
| 23 CASADEI | 25 | 437 | 6 | | | | | | | | | | 17 | 8 | 8 | 21 | 12 | 11 | | | | | | | | | | | | | | | | | | | | |
| 24 VINALES | 22 | 440 | 3 | | | | | | | | | | 23 | 20 | 14 | 14 | 10 | Rt | 22 | 18 | 15 | 25 | 21 | 23 | 11 | 10 | 9 | | | | | | | | | | | |
| 25 BOOTH-AMOS | 21 | 441 | 1 | 11 | 13 | 15 | 22 | Rt | | | | | 20 | Rt | | 17 | 16 | 17 | 20 | 15 | 17 | 23 | 20 | 17 | 24 | 19 | 24 | 20 | Rt | Rt | 18 | 13 | 13 | 11 | 11 | 11 | | |
| 26 HOBELSBERGER | 21 | 441 | 0 | 19 | 10 | 13 | 7 | 8 | 16 | | | | 18 | Rt | 22 | | | | 27 | 12 | Rt | 29 | 25 | 21 | 14 | 20 | 17 | 18 | 26 | 18 | 22 | 17 | 16 | | | | | |
| 27 VOSTATEK | 20 | 442 | 1 | 24 | 24 | 22 | 24 | Rt | 18 | 13 | 10 | 10 | 26 | 19 | 24 | 22 | 17 | 18 | 11 | 11 | 16 | 19 | 22 | 22 | 20 | 24 | 18 | 28 | 18 | 15 | 20 | 16 | 14 | 22 | 17 | 21 | | |
| 28 ODENDAAL | 16 | 446 | 4 | | | | | | | | | | | | | | | | 18 | 3 | Rt | | | | | | | | | | | | | | | | | |
| 29 ORRADRE | 9 | 453 | 7 | 20 | 27 | 17 | 20 | 13 | 14 | 11 | 16 | Rt | 15 | Rt | Rt | 15 | Rt | 12 | 19 | 18 | Rt | 20 | Rt | 19 | 21 | 16 | Rt | | | | | 20 | 18 | 20 | | | | |
| 30 EDWARDS | 7 | 455 | 2 | | | | 29 | Ex | Rt | 20 | 17 | 9 | | | | | | | | | | | | | | 21 | Rt | Rt | | | | | | | | | | |
| 31 OTTAVIANI | 5 | 457 | 2 | | | | | | | 24 | 21 | 11 | 28 | 17 | Rt | | | | | | | | | | | | | | | | | | | | | | | |
| 32 SMITH | 2 | 460 | 3 | | | | | | | | | | | | | | | | | | | | | | | | | | | | | | | | | | | |
| 33 KOFLER | 2 | 460 | 0 | 23 | 22 | Rt | 27 | 20 | 19 | 22 | Rt | 16 | 13 | 16 | 17 | 29 | 19 | Rt | 22 | 17 | Rt | 25 | 24 | 18 | 27 | 29 | 25 | 26 | 23 | 14 | | | | | | | | |
| 34 SPINELLI | 1 | 461 | 1 | | | | | | | | | | 21 | 15 | 21 | | | | | | | | | | | | | | | | | | | | | | | |

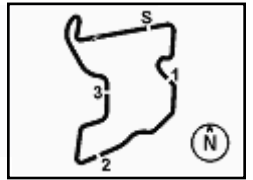
SP = Superpole - 1 = Race 1 - 2 = Race 2

Ns = Did Not Start - Rt = Retired - Ex = Excluded

13/11/2022

These data/results cannot be reproduced, stored and/or transmitted in whole or in part by any manner of electronic, mechanical, photocopying, recording, broadcasting or otherwise now known or herein after developed without the previous express consent by the copyright owner, except for reproduction in daily press and regular printed publications on sale to the public within 60 days of the event related to those data/results and always provided that copyright symbol appears together as follows below.

© DORNA WSBK ORGANIZATION Srl 2022



Pirelli Indonesian Round, 11-13 November 2022
Rider's Performance

| | Points | Points From First | Points From Previous | April 10 | April 24 | May 22 | June 12 | July 17 | July 31 | September 11 | September 25 | October 9 | October 23 | November 13 | November 20 | | | | |
|----------------------|--------|-------------------|----------------------|----------|----------|----------|----------|-----------|----------|--------------|--------------|-----------|------------|-------------|----------------|--|-------|-------|-------|
| | | | | ARAGON | ASSEN | ESTORIL | MISANO | DONINGTON | MOST | MAGNY-COURS | BARCELONA | PORTIMAO | VILLICUM | MANDALIKA | PHILLIP ISLAND | | | | |
| ³⁵ CURRIE | 1 | 461 | 0 | G 1 2 | G 1 2 | G 1 2 | G 1 2 | G 1 2 | G 1 2 | G 1 2 | G 1 2 | G 1 2 | G 1 2 | G 1 2 | G 1 2 | | G 1 2 | G 1 2 | G 1 2 |
| | | | | | | 30 Rt 15 | 30 Rt 26 | 26 Rt 19 | 30 24 19 | 24 Rt 23 | 28 26 Rt | 27 22 19 | | | | | | | |

SP = Superpole - 1 = Race 1 - 2 = Race 2

Ns = Did Not Start - Rt = Retired - Ex = Excluded

13/11/2022

These data/results cannot be reproduced, stored and/or transmitted in whole or in part by any manner of electronic, mechanical, photocopying, recording, broadcasting or otherwise now known or herein after developed without the previous express consent by the copyright owner, except for reproduction in daily press and regular printed publications on sale to the public within 60 days of the event related to those data/results and always provided that copyright symbol appears together as follows below.

© DORNA WSBK ORGANIZATION Srl 2022