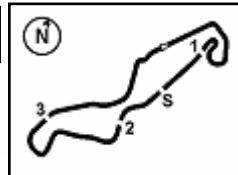


**4****Yamaha R3  
731/02**

TT Circuit Assen 4.542 m

**Motul Dutch Round, 22-24 April 2022  
Results Superpole****1 / 2**

No.	Rider	Nat	Team	Bike	Time	Gap	Rel.	Laps	Speed	
									Avg	Max
1	<b>39 E. VALENTIM</b>	BRA	AD78 Team Brasil bLU cRU	Yamaha R3	<b>1'52.683</b>			12	145,108	<b>183,7</b>
2	<b>80 G. MANSO</b>	BRA	AD78 Team Brasil bLU cRU	Yamaha R3	<b>1'53.783</b>	1.100	1.100	14	143,705	<b>182,7</b>
3	<b>37 A. PIZZOLI</b>	ITA	Yamaha bLU cRU Italy	Yamaha R3	<b>1'53.940</b>	1.257	0.157	13	143,507	<b>184,6</b>
4	<b>32 K. KEANKUM</b>	THA	Yamaha bLU cRU Thailand	Yamaha R3	<b>1'54.048</b>	1.365	0.108	15	143,371	<b>185,9</b>
5	<b>45 C. ROUGÉ</b>	FRA	Z&F Gran Prix School	Yamaha R3	<b>1'54.117</b>	1.434	0.069	13	143,285	<b>183,4</b>
6	<b>13 D. BERGAMINI</b>	ITA	Soradis Yamaha MotoXracing	Yamaha R3	<b>1'54.442</b>	1.759	0.325	13	142,878	<b>185,6</b>
7	<b>26 K. FONTAINHA</b>	BRA	AD78 Team Brasil bLU cRU	Yamaha R3	<b>1'54.518</b>	1.835	0.076	14	142,783	<b>180,9</b>
8	<b>47 J. KUSMIERCZYK</b>	POL	Szkopek Team	Yamaha R3	<b>1'54.532</b>	1.849	0.014	14	142,765	<b>184,3</b>
9	<b>96 M. VICH</b>	ESP	DS Racing School	Yamaha R3	<b>1'54.580</b>	1.897	0.048	12	142,706	<b>184,6</b>
10	<b>10 G. CARBONNEL</b>	FRA	Yamaha bLU cRU Motor France	Yamaha R3	<b>1'54.974</b>	2.291	0.394	15	142,217	<b>181,2</b>
11	<b>16 M. REPAK</b>	SLO	Yamaha MS Racing	Yamaha R3	<b>1'55.032</b>	2.349	0.058	12	142,145	<b>182,4</b>
12	<b>55 B. CROCKFORD</b>	GBR	Crescent Yamaha	Yamaha R3	<b>1'55.131</b>	2.448	0.099	13	142,023	<b>181,8</b>
13	<b>62 F. JURÁNEK</b>	CZE	Movisio Racing	Yamaha R3	<b>1'55.132</b>	2.449	0.001	13	142,021	<b>184,0</b>
14	<b>8 F. FLORIAN</b>	BRA	AD78 Team Brasil bLU cRU	Yamaha R3	<b>1'55.158</b>	2.475	0.026	14	141,989	<b>183,1</b>
15	<b>61 U. HIDALGO</b>	ESP	ARCO MotoR University Team	Yamaha R3	<b>1'55.162</b>	2.479	0.004	12	141,984	<b>183,4</b>
16	<b>46 D. NOWAK</b>	POL	Szkopek Team	Yamaha R3	<b>1'55.388</b>	2.705	0.226	9	141,706	<b>181,5</b>
17	<b>88 E. BURR</b>	BRA	AD78 Team Brasil bLU cRU	Yamaha R3	<b>1'55.395</b>	2.712	0.007	13	141,698	<b>182,7</b>
18	<b>69 A. MC DONALD</b>	AUS	ProGP Racing	Yamaha R3	<b>1'55.416</b>	2.733	0.021	13	141,672	<b>182,4</b>
19	<b>42 C. GIMENEZ</b>	ESP	ARCO MotoR University Team	Yamaha R3	<b>1'55.555</b>	2.872	0.139	14	141,501	<b>182,4</b>
20	<b>18 D. PALLADINO</b>	ITA	Team ROC n DEA	Yamaha R3	<b>1'55.817</b>	3.134	0.262	13	141,181	<b>182,4</b>
21	<b>89 W. NUGROHO</b>	INA	bLU cRU Yamaha Racing Indonesia	Yamaha R3	<b>1'56.029</b>	3.346	0.212	12	140,923	<b>178,8</b>
22	<b>25 T. HORN</b>	USA	American Racing Academy	Yamaha R3	<b>1'56.272</b>	3.589	0.243	8	140,629	<b>179,1</b>
23	<b>56 V. GELLY</b>	FRA	VAL56 Speed Racing	Yamaha R3	<b>1'58.534</b>	5.851	2.262	3	137,945	<b>171,4</b>

**Qualifying Lap Time (115% of 1'52.683): 2'09.586**

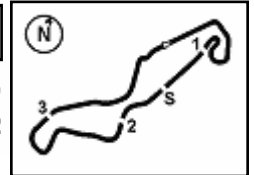
AIR	Humidity:	50%	Temp:	16°C
TRACK	Condition:	Dry	Temp:	29°C

Records	Pole	(SP)	2021	J.Giral Romero	1'52.567	145,260	Km/h
	Race	(RC2)	2021	F.Seabright	1'54.073	143,340	Km/h
	All Times	(SP)	2021	J.Giral Romero	1'52.567	145,260	Km/h

Start                      End                      The results are provisional until the end of the time limit for protests and appeals  
22/04/2022              13:30                      14:02                      and the completion of the technical checks.

These data/results cannot be reproduced, stored and/or transmitted in whole or in part by any manner of electronic, mechanical, photocopying, recording, broadcasting or otherwise now known or herein after developed without the previous express consent by the copyright owner, except for reproduction in daily press and regular printed publications on sale to the public within 60 days of the event related to those data/results and always provided that copyright symbol appears together as follows below.

© DORNA WSBK ORGANIZATION Srl 2022

**4****Yamaha R3  
731/02**

TT Circuit Assen 4.542 m

2 / 2

## Motul Dutch Round, 22-24 April 2022 Results Superpole

### Session Highlights

Local Time	No. Rider	Description
13.30.00		Start
13.39.19	<b>56</b> V. <b>GELLY</b>	Crashed - Turn 5
13.49.48	<b>25</b> T. <b>HORN</b>	Crashed - Turn 10
13.52.28	<b>13</b> D. <b>BERGAMINI</b>	Lap Cancelled [1'59.366] - Exceeded Track Limits - Turn 16
13.52.45	<b>13</b> D. <b>BERGAMINI</b>	Lap Cancelled [1'54.144] - Exceeded Track Limits - Turn 16
13.53.15	<b>46</b> D. <b>NOWAK</b>	Crashed - Turn 5
13.53.35	<b>18</b> D. <b>PALLADINO</b>	Lap Cancelled [1'55.540] - Exceeded Track Limits - Turn 18
13.53.41	<b>18</b> D. <b>PALLADINO</b>	Current Lap Cancelled - Exceeded Track Limits - Turn 18
13.59.42	<b>69</b> A. <b>MC DONALD</b>	Lap Cancelled [3'30.138] - Exceeded Track Limits - Turn 8
14.02.48		End Of Session

### Fastest Laps Sequence

No.	Rider	Nat	Team	Bike	Local Time	Time	Gap	Avg
<b>80</b>	G. <b>MANSO</b>	BRA	AD78 Team Brasil bLU cRU	Yamaha R3	13:34'23.680	<b>1'56.603</b>		140,230
<b>55</b>	B. <b>CROCKFORD</b>	GBR	Crescent Yamaha	Yamaha R3	13:34'23.927	<b>1'56.465</b>	-0.138	140,396
<b>25</b>	T. <b>HORN</b>	USA	American Racing Academy	Yamaha R3	13:34'24.862	<b>1'56.393</b>	-0.072	140,483
<b>39</b>	E. <b>VALENTIM</b>	BRA	AD78 Team Brasil bLU cRU	Yamaha R3	13:34'48.599	<b>1'55.682</b>	-0.711	141,346
<b>16</b>	M. <b>REPAK</b>	SLO	Yamaha MS Racing	Yamaha R3	13:34'50.112	<b>1'55.032</b>	-0.650	142,145
<b>39</b>	E. <b>VALENTIM</b>	BRA	AD78 Team Brasil bLU cRU	Yamaha R3	13:38'47.127	<b>1'54.534</b>	-0.498	142,763
<b>39</b>	E. <b>VALENTIM</b>	BRA	AD78 Team Brasil bLU cRU	Yamaha R3	13:50'07.196	<b>1'54.078</b>	-0.456	143,334
<b>39</b>	E. <b>VALENTIM</b>	BRA	AD78 Team Brasil bLU cRU	Yamaha R3	13:52'01.061	<b>1'53.865</b>	-0.213	143,602
<b>39</b>	E. <b>VALENTIM</b>	BRA	AD78 Team Brasil bLU cRU	Yamaha R3	13:53'54.214	<b>1'53.153</b>	-0.712	144,505
<b>39</b>	E. <b>VALENTIM</b>	BRA	AD78 Team Brasil bLU cRU	Yamaha R3	14:01'45.500	<b>1'52.683</b>	-0.470	145,108

22/04/2022      Start      End      The results are provisional until the end of the time limit for protests and appeals  
13:30      14:02      and the completion of the technical checks.

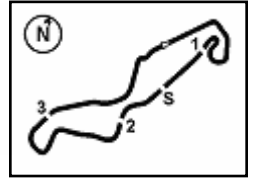
These data/results cannot be reproduced, stored and/or transmitted in whole or in part by any manner of electronic, mechanical, photocopying, recording, broadcasting or otherwise now known or herein after developed without the previous express consent by the copyright owner, except for reproduction in daily press and regular printed publications on sale to the public within 60 days of the event related to those data/results and always provided that copyright symbol appears together as follows below.

© DORNA WSBK ORGANIZATION Srl 2022



5

Yamaha R3  
731/02



TT Circuit Assen 4.542 m

# Motul Dutch Round, 22-24 April 2022

## Starting Grid - Race 1 (10 Laps x 4,542 km = 45,420 km)

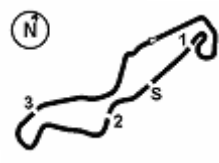
1	1	<b>39 VALENTIM E.</b> Yamaha 1'52.683	2	<b>80 MANSO G.</b> Yamaha 1'53.783	3	<b>37 PIZZOLI A.</b> Yamaha 1'53.940
2	4	<b>32 KEANKUM K.</b> Yamaha 1'54.048	5	<b>45 ROUGÉ C.</b> Yamaha 1'54.117	6	<b>13 BERGAMINI D.</b> Yamaha 1'54.442
3	7	<b>26 FONTAINHA K.</b> Yamaha 1'54.518	8	<b>47 KUSMIERCZYK J.</b> Yamaha 1'54.532	9	<b>96 VICH M.</b> Yamaha 1'54.580
4	10	<b>10 CARBONNEL G.</b> Yamaha 1'54.974	11	<b>16 REPAK M.</b> Yamaha 1'55.032	12	<b>55 CROCKFORD B.</b> Yamaha 1'55.131
5	13	<b>62 JURÁNEK F.</b> Yamaha 1'55.132	14	<b>8 FLORIAN F.</b> Yamaha 1'55.158	15	<b>61 HIDALGO U.</b> Yamaha 1'55.162
6	16	<b>46 NOWAK D.</b> Yamaha 1'55.388	17	<b>88 BURR E.</b> Yamaha 1'55.395	18	<b>69 MC DONALD A.</b> Yamaha 1'55.416
7	19	<b>42 GIMENEZ C.</b> Yamaha 1'55.555	20	<b>18 PALLADINO D.</b> Yamaha 1'55.817	21	<b>89 NUGROHO W.</b> Yamaha 1'56.029
8	22	<b>25 HORN T.</b> Yamaha 1'56.272	23	<b>56 GELLY V.</b> Yamaha 1'58.534		

22/04/2022 The Race Director .....

These data/results cannot be reproduced, stored and/or transmitted in whole or in part by any manner of electronic, mechanical, photocopying, recording, broadcasting or otherwise now known or herein after developed without the previous express consent by the copyright owner, except for reproduction in daily press and regular printed publications on sale to the public within 60 days of the event related to those data/results and always provided that copyright symbol appears together as follows below. © DORNA WSBK ORGANIZATION Srl 2022



6.1

Yamaha R3  
731/02

TT Circuit Assen 4.542 m

## Motul Dutch Round, 22-24 April 2022

### Best Sector & Speed Superpole

BEST LAP			
1	39 E. VALENTIM	Yamaha R3	1'52.683
2	80 G. MANSO	Yamaha R3	1'53.783
3	37 A. PIZZOLI	Yamaha R3	1'53.940
4	32 K. KEANKUM	Yamaha R3	1'54.048
5	45 C. ROUGÉ	Yamaha R3	1'54.117
6	13 D. BERGAMINI	Yamaha R3	1'54.442
7	26 K. FONTAINHA	Yamaha R3	1'54.518
8	47 J. KUSMIERCZYK	Yamaha R3	1'54.532
9	96 M. VICH	Yamaha R3	1'54.580
10	10 G. CARBONNEL	Yamaha R3	1'54.974
11	16 M. REPAK	Yamaha R3	1'55.032
12	55 B. CROCKFORD	Yamaha R3	1'55.131
13	62 F. JURÁNEK	Yamaha R3	1'55.132
14	8 F. FLORIAN	Yamaha R3	1'55.158
15	61 U. HIDALGO	Yamaha R3	1'55.162
16	46 D. NOWAK	Yamaha R3	1'55.388
17	88 E. BURR	Yamaha R3	1'55.395
18	69 A. MC DONALD	Yamaha R3	1'55.416
19	42 C. GIMENEZ	Yamaha R3	1'55.555
20	18 D. PALLADINO	Yamaha R3	1'55.817
21	89 W. NUGROHO	Yamaha R3	1'56.029
22	25 T. HORN	Yamaha R3	1'56.272
23	56 V. GELLY	Yamaha R3	1'58.534

SPEED			
1	32 K. KEANKUM	Yamaha R3	185,9
2	13 D. BERGAMINI	Yamaha R3	185,6
3	96 M. VICH	Yamaha R3	184,6
4	37 A. PIZZOLI	Yamaha R3	184,6
5	47 J. KUSMIERCZYK	Yamaha R3	184,3
6	62 F. JURÁNEK	Yamaha R3	184,0
7	39 E. VALENTIM	Yamaha R3	183,7
8	61 U. HIDALGO	Yamaha R3	183,4
9	45 C. ROUGÉ	Yamaha R3	183,4
10	8 F. FLORIAN	Yamaha R3	183,1
11	80 G. MANSO	Yamaha R3	182,7
12	88 E. BURR	Yamaha R3	182,7
13	42 C. GIMENEZ	Yamaha R3	182,4
14	69 A. MC DONALD	Yamaha R3	182,4
15	16 M. REPAK	Yamaha R3	182,4
16	18 D. PALLADINO	Yamaha R3	182,4
17	55 B. CROCKFORD	Yamaha R3	181,8
18	46 D. NOWAK	Yamaha R3	181,5
19	10 G. CARBONNEL	Yamaha R3	181,2
20	26 K. FONTAINHA	Yamaha R3	180,9
21	25 T. HORN	Yamaha R3	179,1
22	89 W. NUGROHO	Yamaha R3	178,8
23	56 V. GELLY	Yamaha R3	171,4

SEG. 1			SEG. 2			SEG. 3			SEG. 4		
1	39 E. VALENTIM	36.309	1	32 K. KEANKUM	18.382	1	37 A. PIZZOLI	30.962	1	39 E. VALENTIM	26.948
2	32 K. KEANKUM	36.395	2	80 G. MANSO	18.409	2	39 E. VALENTIM	30.972	2	80 G. MANSO	27.303
3	80 G. MANSO	36.479	3	62 F. JURÁNEK	18.411	3	32 K. KEANKUM	31.115	3	47 J. KUSMIERCZYK	27.318
4	37 A. PIZZOLI	36.510	4	13 D. BERGAMINI	18.431	4	25 T. HORN	31.145	4	37 A. PIZZOLI	27.388
5	13 D. BERGAMINI	36.587	5	39 E. VALENTIM	18.454	5	13 D. BERGAMINI	31.160	5	32 K. KEANKUM	27.394
6	26 K. FONTAINHA	36.623	6	37 A. PIZZOLI	18.490	6	26 K. FONTAINHA	31.162	6	42 C. GIMENEZ	27.401
7	45 C. ROUGÉ	36.654	7	45 C. ROUGÉ	18.503	7	61 U. HIDALGO	31.217	7	55 B. CROCKFORD	27.415
8	61 U. HIDALGO	36.655	8	96 M. VICH	18.511	8	55 B. CROCKFORD	31.241	8	45 C. ROUGÉ	27.428
9	62 F. JURÁNEK	36.857	9	61 U. HIDALGO	18.527	9	80 G. MANSO	31.269	9	96 M. VICH	27.451
10	16 M. REPAK	36.890	10	69 A. MC DONALD	18.541	10	45 C. ROUGÉ	31.303	10	26 K. FONTAINHA	27.493
11	10 G. CARBONNEL	36.899	11	55 B. CROCKFORD	18.568	11	88 E. BURR	31.307	11	13 D. BERGAMINI	27.497
12	69 A. MC DONALD	36.922	12	8 F. FLORIAN	18.575	12	18 D. PALLADINO	31.312	12	16 M. REPAK	27.519
13	47 J. KUSMIERCZYK	36.923	13	47 J. KUSMIERCZYK	18.590	13	96 M. VICH	31.332	13	88 E. BURR	27.643
14	96 M. VICH	36.953	14	18 D. PALLADINO	18.593	14	10 G. CARBONNEL	31.397	14	25 T. HORN	27.782
15	8 F. FLORIAN	36.973	15	26 K. FONTAINHA	18.605	15	46 D. NOWAK	31.403	15	69 A. MC DONALD	27.798
16	42 C. GIMENEZ	36.974	16	88 E. BURR	18.643	16	42 C. GIMENEZ	31.422	16	8 F. FLORIAN	27.825
17	46 D. NOWAK	37.006	17	10 G. CARBONNEL	18.647	17	8 F. FLORIAN	31.460	17	10 G. CARBONNEL	27.881
18	18 D. PALLADINO	37.037	18	16 M. REPAK	18.666	18	16 M. REPAK	31.466	18	61 U. HIDALGO	27.919
19	88 E. BURR	37.101	19	25 T. HORN	18.668	19	47 J. KUSMIERCZYK	31.528	19	18 D. PALLADINO	27.961
20	25 T. HORN	37.103	20	46 D. NOWAK	18.735	20	62 F. JURÁNEK	31.595	20	46 D. NOWAK	28.013
21	55 B. CROCKFORD	37.113	21	89 W. NUGROHO	18.748	21	69 A. MC DONALD	31.792	21	89 W. NUGROHO	28.027
22	89 W. NUGROHO	37.415	22	42 C. GIMENEZ	18.751	22	89 W. NUGROHO	31.819	22	62 F. JURÁNEK	28.120
23	56 V. GELLY	37.500	23	56 V. GELLY	19.329	23	56 V. GELLY	32.434	23	56 V. GELLY	28.741

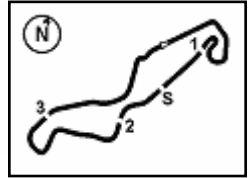
22/04/2022

These data/results cannot be reproduced, stored and/or transmitted in whole or in part by any manner of electronic, mechanical, photocopying, recording, broadcasting or otherwise now known or herein after developed without the previous express consent by the copyright owner, except for reproduction in daily press and regular printed publications on sale to the public within 60 days of the event related to those data/results and always provided that copyright symbol appears together as follows below.

© DORNA WSBK ORGANIZATION Srl 2022



6.2

Yamaha R3  
731/02

TT Circuit Assen 4.542 m

## Motul Dutch Round, 22-24 April 2022

### Ideal Time Superpole

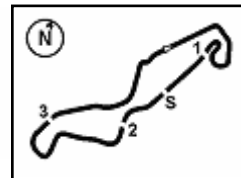
No.	Rider	Nat	Bike	Seg. 1	Seg. 2	Seg. 3	Seg. 4	Ideal Time			
				Diff. 1	Diff. 2	Diff. 3	Diff. 4	Best Lap	Pos.	Diff.	
1	<b>39 E. VALENTIM</b>	BRA	Yamaha R3	<b>36.309</b>	18.454	30.972	<b>26.948</b>	<b>1'52.683</b>		1	
2	<b>32 K. KEANKUM</b>	THA	Yamaha R3	36.395 +0.532	<b>18.382</b> +0.230	31.115	27.394	<b>1'53.286</b>	1'54.048	4	0.762
3	<b>37 A. PIZZOLI</b>	ITA	Yamaha R3	36.510 +0.590	18.490	<b>30.962</b>	27.388	<b>1'53.350</b>	1'53.940	3	0.590
4	<b>80 G. MANSO</b>	BRA	Yamaha R3	36.479	18.409	31.269 +0.323	27.303	<b>1'53.460</b>	1'53.783	2	0.323
5	<b>13 D. BERGAMINI</b>	ITA	Yamaha R3	36.587 +0.130	18.431 +0.329	31.160 +0.308	27.497	<b>1'53.675</b>	1'54.442	6	0.767
6	<b>26 K. FONTAINHA</b>	BRA	Yamaha R3	36.623 +0.124	18.605	31.162 +0.511	27.493	<b>1'53.883</b>	1'54.518	7	0.635
7	<b>45 C. ROUGÉ</b>	FRA	Yamaha R3	36.654 +0.089	18.503	31.303 +0.140	27.428	<b>1'53.888</b>	1'54.117	5	0.229
8	<b>96 M. VICH</b>	ESP	Yamaha R3	36.953	18.511 +0.080	31.332 +0.253	27.451	<b>1'54.247</b>	1'54.580	9	0.333
9	<b>61 U. HIDALGO</b>	ESP	Yamaha R3	36.655 +0.181	18.527 +0.047	31.217 +0.527	27.919 +0.089	<b>1'54.318</b>	1'55.162	15	0.844
10	<b>55 B. CROCKFORD</b>	GBR	Yamaha R3	37.113	18.568 +0.271	31.241 +0.235	27.415 +0.288	<b>1'54.337</b>	1'55.131	12	0.794
11	<b>47 J. KUSMIERCZYK</b>	POL	Yamaha R3	36.923 +0.149	18.590 +0.024	31.528	27.318	<b>1'54.359</b>	1'54.532	8	0.173
12	<b>16 M. REPAK</b>	SLO	Yamaha R3	36.890 +0.403	18.666 +0.088	31.466	27.519	<b>1'54.541</b>	1'55.032	11	0.491
13	<b>42 C. GIMENEZ</b>	ESP	Yamaha R3	36.974 +0.822	18.751 +0.174	31.422 +0.011	27.401	<b>1'54.548</b>	1'55.555	19	1.007
14	<b>88 E. BURR</b>	BRA	Yamaha R3	37.101 +0.117	18.643 +0.268	31.307 +0.316	27.643	<b>1'54.694</b>	1'55.395	17	0.701
15	<b>25 T. HORN</b>	USA	Yamaha R3	37.103 +0.279	18.668 +0.035	31.145 +0.837	27.782 +0.423	<b>1'54.698</b>	1'56.272	22	1.574
16	<b>10 G. CARBONNEL</b>	FRA	Yamaha R3	36.899	18.647	31.397	27.881 +0.150	<b>1'54.824</b>	1'54.974	10	0.150
17	<b>8 F. FLORIAN</b>	BRA	Yamaha R3	36.973	18.575 +0.064	31.460	27.825 +0.261	<b>1'54.833</b>	1'55.158	14	0.325
18	<b>18 D. PALLADINO</b>	ITA	Yamaha R3	37.037 +0.367	18.593 +0.288	31.312	27.961 +0.259	<b>1'54.903</b>	1'55.817	20	0.914
19	<b>62 F. JURÁNEK</b>	CZE	Yamaha R3	36.857	18.411 +0.149	31.595	28.120	<b>1'54.983</b>	1'55.132	13	0.149
20	<b>69 A. MC DONALD</b>	AUS	Yamaha R3	36.922	18.541	31.792 +0.193	27.798 +0.170	<b>1'55.053</b>	1'55.416	18	0.363
21	<b>46 D. NOWAK</b>	POL	Yamaha R3	37.006	18.735	31.403 +0.092	28.013 +0.139	<b>1'55.157</b>	1'55.388	16	0.231
22	<b>89 W. NUGROHO</b>	INA	Yamaha R3	37.415	18.748 +0.020	31.819	28.027	<b>1'56.009</b>	1'56.029	21	0.020
23	<b>56 V. GELLY</b>	FRA	Yamaha R3	37.500	19.329	32.434 +0.168	28.741 +0.362	<b>1'58.004</b>	1'58.534	23	0.530
<b>Overall Ideal Time</b>				<b>36.309</b>	<b>18.382</b>	<b>30.962</b>	<b>26.948</b>	<b>1'52.601</b>			

22/04/2022

These data/results cannot be reproduced, stored and/or transmitted in whole or in part by any manner of electronic, mechanical, photocopying, recording, broadcasting or otherwise now known or herein after developed without the previous express consent by the copyright owner, except for reproduction in daily press and regular printed publications on sale to the public within 60 days of the event related to those data/results and always provided that copyright symbol appears together as follows below.

© DORNA WSBK ORGANIZATION Srl 2022

PERUGIA TIMING

**6.3****Yamaha R3  
731/02**

TT Circuit Assen 4.542 m

1 / 3

**Motul Dutch Round, 22-24 April 2022  
Chronological Analysis Superpole**

1° 39 E. VALENTIM (1'52.683)							
Lap	Seg.1	Seg.2	Seg.3	Seg.4	Lap Time	km/h	Local Time
1		19.274	31.974	28.642		174,5	13:32'52.917
2	37.210	19.047	31.364	28.061	1'55.682	173,6	13:34'48.599
3	44.576	18.710	32.036	28.672	2'03.994	181,8	13:36'52.593
4	36.719	18.617	31.222	27.976	1'54.534	180,9	13:38'47.127
5	37.780	19.014	33.513	29.113	1'59.420	174,8	13:40'46.547
6	37.638	18.519	31.440	42.551	2'10.148P	<b>183,7</b>	13:42'56.695
7	3'58.760	18.981	31.175	27.507	5'16.423P	176,5	13:48'13.118
8	36.860	18.538	31.146	27.534	1'54.078	179,1	13:50'07.196
9	36.710	18.637	31.114	27.404	1'53.865	178,2	13:52'01.061
10	36.328	18.673	31.029	27.123	1'53.153	178,2	13:53'54.214
11	37.515	18.466	31.715	40.459	2'08.155P	182,4	13:56'02.369
12	2'32.978	18.998	31.268	27.204	3'50.448P	175,0	13:59'52.817
13	<b>36.309</b>	<b>18.454</b>	<b>30.972</b>	<b>26.948</b>	<b>1'52.683</b>	182,1	14:01'45.500

2° 80 G. MANSO (1'53.783)							
Lap	Seg.1	Seg.2	Seg.3	Seg.4	Lap Time	km/h	Local Time
1		26.301	35.481	29.071		100,9	13:32'27.077
2	37.325	19.069	31.990	28.219	1'56.603	172,2	13:34'23.680
3	37.235	19.246	32.020	28.772	1'57.273	172,0	13:36'20.953
4	37.906	19.397	38.188	31.644	2'07.135	166,9	13:38'28.088
5	36.988	18.642	31.986	28.189	1'55.805	176,8	13:40'23.893
6	37.950	18.958	31.700	28.551	1'57.159	176,2	13:42'21.052
7	37.527	19.060	31.613	40.199	2'08.399P	174,5	13:44'29.451
8	2'12.533	19.573	32.249	28.416	3'32.771P	178,2	13:48'02.222
9	37.516	18.762	32.298	28.234	1'56.810	180,9	13:49'59.032
10	36.999	18.823	31.750	28.081	1'55.653	173,6	13:51'54.685
11	37.632	26.614	31.303	27.576	2'03.125	112,9	13:53'57.810
12	<b>36.479</b>	<b>18.409</b>	31.592	<b>27.303</b>	<b>1'53.783</b>	<b>182,7</b>	13:55'51.593
13	38.241	20.476	35.240	29.110	2'03.067	157,4	13:57'54.660
14	36.715	18.764	<b>31.269</b>	27.738	1'54.486	175,9	13:59'49.146
15	36.731	19.013	31.473	27.838	1'55.055	173,4	14:01'44.201

3° 37 A. PIZZOLI (1'53.940)							
Lap	Seg.1	Seg.2	Seg.3	Seg.4	Lap Time	km/h	Local Time
1		25.259	33.086	27.986		132,7	13:32'57.701
2	37.356	18.840	31.878	27.605	1'55.679	183,4	13:34'53.380
3	37.897	19.862	31.893	29.417	1'59.069	170,3	13:36'52.449
4	37.847	18.697	31.671	27.963	1'56.178	182,1	13:38'48.627
5	37.036	18.683	31.654	28.324	1'55.697	177,3	13:40'44.324
6	45.683	18.768	31.847	38.793	2'15.091P	177,6	13:42'59.415
7	3'42.481	20.565	32.110	28.509	5'03.665P	177,0	13:48'03.080
8	37.022	18.909	31.679	31.798	1'59.408	<b>184,6</b>	13:50'02.488
9	38.919	18.625	31.431	27.416	1'56.391	182,1	13:51'58.879
10	<b>36.510</b>	18.712	31.074	28.457	1'54.753	178,5	13:53'53.632
11	41.563	18.754	31.437	27.445	1'59.199	179,7	13:55'52.831
12	36.871	19.416	37.417	29.841	2'03.545	178,2	13:57'56.376
13	37.100	<b>18.490</b>	<b>30.962</b>	<b>27.388</b>	<b>1'53.940</b>	183,1	13:59'50.316
14	37.176	18.659	31.488	28.094	1'55.417	183,7	14:01'45.733

4° 32 K. KEANKUM (1'54.048)							
Lap	Seg.1	Seg.2	Seg.3	Seg.4	Lap Time	km/h	Local Time
1		20.239	33.507	30.506		166,2	13:32'32.897
2	38.243	19.581	32.348	28.385	1'58.557	171,2	13:34'31.454
3	37.988	19.355	31.845	28.661	1'57.849	172,5	13:36'29.303
4	37.355	19.345	32.247	28.464	1'57.411	173,4	13:38'26.714
5	37.474	19.172	32.257	28.702	1'57.605	173,9	13:40'24.319
6	37.314	19.000	31.776	28.571	1'56.661	177,0	13:42'20.980
7	38.896	18.818	31.801	27.887	1'57.402	179,4	13:44'18.382
8	36.984	18.853	31.833	28.970	1'56.640	178,8	13:46'15.022
9	37.195	18.932	31.814	28.052	1'55.993	176,5	13:48'11.015
10	37.279	18.894	31.629	28.391	1'56.193	175,9	13:50'07.208

11	36.927	18.612	<b>31.115</b>	<b>27.394</b>	<b>1'54.048</b>	180,3	13:52'01.256
12	<b>36.395</b>	18.661	31.629	27.539	1'54.224	179,7	13:53'55.480
13	37.013	<b>18.382</b>	31.945	27.929	1'55.269	<b>185,9</b>	13:55'50.749
14	38.212	19.829	34.476	30.312	2'02.829	164,4	13:57'53.578
15	38.562	18.808	31.706	27.879	1'56.955	182,1	13:59'50.533
16	37.186	18.638	31.983	28.688	1'56.495	184,3	14:01'47.028

5° 45 C. ROUGÉ (1'54.117)							
Lap	Seg.1	Seg.2	Seg.3	Seg.4	Lap Time	km/h	Local Time
1		23.465	32.632	29.598		143,4	13:32'59.647
2	37.226	18.983	31.684	27.665	1'55.558	175,3	13:34'55.205
3	37.757	19.528	33.567	28.498	1'59.350	173,1	13:36'54.555
4	36.923	18.728	31.650	28.150	1'55.451	178,2	13:38'50.006
5	42.075	19.468	32.164	28.379	2'02.086	168,2	13:40'52.092
6	36.879	18.927	31.867	27.907	1'55.580	177,3	13:42'47.672
7	36.954	18.752	31.590	28.056	1'55.352	178,2	13:44'43.024
8	36.826	19.533	35.095	42.146	2'13.600P	173,1	13:46'56.624
9	3'36.141	20.036	32.846	32.049	5'01.072P	163,9	13:51'57.696
10	36.926	18.604	31.769	28.311	1'55.610	180,0	13:53'53.306
11	40.471	19.180	33.119	28.256	2'01.026	171,4	13:55'54.332
12	36.807	19.686	38.353	29.677	2'04.523	177,9	13:57'58.855
13	36.743	<b>18.503</b>	31.443	<b>27.428</b>	<b>1'54.117</b>	<b>183,4</b>	13:59'52.972
14	<b>36.654</b>	18.699	<b>31.303</b>	27.523	1'54.179	177,9	14:01'47.151

6° 13 D. BERGAMINI (1'54.442)							
Lap	Seg.1	Seg.2	Seg.3	Seg.4	Lap Time	km/h	Local Time
1		19.361	32.347	28.240		173,1	13:32'53.495
2	37.458	19.131	31.756	28.016	1'56.361	173,4	13:34'49.856
3	44.110	19.121	31.604	28.418	2'03.253	177,9	13:36'53.109
4	37.863	19.034	32.014	27.783	1'56.694	185,2	13:38'49.803
5	38.256	18.841	31.913	28.614	1'57.624	182,1	13:40'47.427
6	37.908	18.790	31.478	41.845	2'10.021P	178,8	13:42'57.448
7	3'38.576	22.356	35.319	28.476	5'04.727P	139,9	13:48'02.175
8	37.108	19.154	34.505	28.599	1'59.366C	174,5	13:50'01.541
9	<b>36.587</b>	<b>18.431</b>	<b>31.160</b>	27.966	1'54.144C	182,4	13:51'55.685
10	40.884	18.820	33.069	27.563	2'00.336	179,4	13:53'56.021
11	36.717	18.760	31.468	<b>27.497</b>	<b>1'54.442</b>	<b>185,6</b>	13:55'50.463
12	41.839	18.932	34.047	29.074	2'03.892	176,5	13:57'54.355
13	42.034	18.728	31.587	27.517	1'59.866	181,2	13:59'54.221
14	36.771	18.659	31.370	27.716	1'54.516	178,5	14:01'48.737

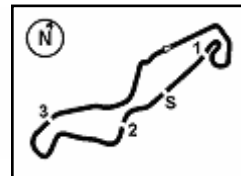
7° 26 K. FONTAINHA (1'54.518)							
Lap	Seg.1	Seg.2	Seg.3	Seg.4	Lap Time	km/h	Local Time
1		32.743	43.919	28.484		112,0	13:32'54.729
2	37.429	19.256	31.568	28.104	1'56.357	172,5	13:34'51.086
3	37.644	19.430	33.953	29.608	2'00.635	170,3	13:36'51.721
4	37.295	19.137	31.411	27.845	1'55.688	173,9	13:38'47.409
5	37.426	19.310	32.917	29.282	1'58.935	170,9	13:40'46.344
6	36.949	18.760	31.961	28.240	1'55.910	178,8	13:42'42.254
7	42.157	19.186	31.803	28.187	2'01.333	171,7	13:44'43.587
8	36.757	19.046	31.724	46.191	2'13.718P	176,8	13:46'57.305
9	1'47.909	18.924	31.448	28.101	3'06.382P	174,2	13:50'03.687
10	<b>36.623</b>	18.653	31.539	28.220	1'55.035	176,8	13:51'58.722
11	36.837	18.666	<b>31.162</b>	28.030	1'54.695	180,3	13:53'53.417
12	37.467	18.764	32.180	28.557	1'56.968	174,5	13:55'50.385
13	41.057	19.565	33.690	30.176	2'04.488	<b>180,9</b>	13:57'54.873
14	36.747	<b>18.605</b>	31.673	<b>27.493</b>	<b>1'54.518</b>	179,7	13:59'49.391
15	36.628	18.791	31.571	27.913	1'54.903	178,5	14:01'44.294

8° 47 J. KUSMIERCZYK (1'54.532)							
Lap	Seg.1	Seg.2	Seg.3	Seg.4	Lap Time	km/h	Local Time
1		23.883	33.366	28.670		140,4	13:32'57.764

22/04/2022 P = Pits In/Out - C = Lap Time Cancelled

These data/results cannot be reproduced, stored and/or transmitted in whole or in part by any manner of electronic, mechanical, photocopying, recording, broadcasting or otherwise now known or herein after developed without the previous express consent by the copyright owner, except for reproduction in daily press and regular printed publications on sale to the public within 60 days of the event related to those data/results and always provided that copyright symbol appears together as follows below.

© DORNA WSBK ORGANIZATION Srl 2022

**6.3****Yamaha R3  
731/02**

TT Circuit Assen 4.542 m

**2 / 3****Motul Dutch Round, 22-24 April 2022  
Chronological Analysis Superpole**

2	37.913	19.163	31.986	27.739	1'56.801	174,8	13:34'54.565	12	37.671	18.848	31.823	27.676	1'56.018	<b>182,4</b>	13:59'50.074
3	37.866	19.249	32.065	28.555	1'57.735	173,1	13:36'52.300	13	<b>36.890</b>	18.825	31.549	27.840	1'55.104	175,9	14:01'45.178
4	38.278	19.037	31.935	28.277	1'57.527	178,2	13:38'49.827	<b>12° 55 B. CROCKFORD (1'55.131)</b>							
5	37.866	18.838	32.137	28.583	1'57.424	179,4	13:40'47.251	Lap	Seg.1	Seg.2	Seg.3	Seg.4	Lap Time	km/h	Local Time
6	37.400	<b>18.590</b>	31.582	27.911	1'55.483	182,7	13:42'42.734	1		27.388	34.002	29.086	97,8	13:32'27.462	
7	47.992	20.175	33.615	38.842	2'20.624P	165,1	13:45'03.358	2	37.634	19.210	31.663	27.958	1'56.465	173,6	13:34'23.927
8	1'35.497	20.234	33.507	28.789	2'58.027P	170,3	13:48'01.385	3	37.375	19.126	31.774	28.630	1'56.905	176,2	13:36'20.832
9	38.014	18.890	33.375	28.671	1'58.950	178,2	13:50'00.335	4	39.406	20.004	33.926	43.302	2'16.638P	168,0	13:38'37.470
10	<b>36.923</b>	18.719	31.768	28.192	1'55.602	179,4	13:51'55.937	5	2'37.838	19.556	33.056	30.100	4'00.550P	174,5	13:42'38.020
11	37.085	19.111	32.107	28.865	1'57.168	172,8	13:53'53.105	6	38.064	20.366	33.126	29.870	2'01.426	163,4	13:44'39.446
12	37.922	21.529	32.187	27.727	1'59.365	128,6	13:55'52.470	7	38.516	21.425	32.729	45.792	2'18.462P	148,4	13:46'57.908
13	44.153	19.105	32.981	28.493	2'04.732	173,4	13:57'57.202	8	1'40.921	20.663	32.015	32.159	3'05.758P	162,2	13:50'03.666
14	37.072	18.614	<b>31.528</b>	<b>27.318</b>	<b>1'54.532</b>	<b>184,3</b>	13:59'51.734	9	<b>37.113</b>	18.839	31.476	27.703	<b>1'55.131</b>	180,3	13:51'58.797
15	44.550	19.445	32.473	28.633	2'05.101	170,9	14:01'56.835	10	37.281	18.767	<b>31.241</b>	28.169	1'55.458	180,6	13:53'54.255

<b>9° 96 M. VICH (1'54.580)</b>							
Lap	Seg.1	Seg.2	Seg.3	Seg.4	Lap Time	km/h	Local Time
1		19.800	32.302	28.373		169,8	13:32'53.944
2	37.345	19.031	31.754	27.938	1'56.068	173,6	13:34'50.012
3	44.600	18.997	31.849	28.198	2'03.644	178,2	13:36'53.656
4	37.163	18.921	32.055	28.036	1'56.175	<b>184,6</b>	13:38'49.831
5	37.070	18.659	31.686	27.982	1'55.397	180,6	13:40'45.228
6	40.173	19.121	31.807	42.698	2'13.799P	177,6	13:42'59.027
7	3'58.443	18.847	31.608	27.908	5'16.806P	177,3	13:48'15.833
8	37.065	18.763	31.529	28.473	1'55.830	176,5	13:50'11.663
9	37.279	18.875	31.621	39.535	2'07.310P	175,3	13:52'18.973
10	2'15.088	<b>18.511</b>	31.784	27.813	3'33.196P	179,7	13:55'52.169
11	37.855	20.304	35.222	30.347	2'03.728	167,7	13:57'55.897
12	37.046	18.529	<b>31.332</b>	<b>27.888</b>	1'54.795	182,4	13:59'50.692
13	<b>36.953</b>	18.591	31.585	<b>27.451</b>	<b>1'54.580</b>	183,7	14:01'45.272

<b>10° 10 G. CARBONNEL (1'54.974)</b>							
Lap	Seg.1	Seg.2	Seg.3	Seg.4	Lap Time	km/h	Local Time
1		26.149	36.896	32.781		99,8	13:32'33.399
2	38.024	19.508	32.570	28.106	1'58.208	174,5	13:34'31.607
3	38.036	19.294	31.907	28.323	1'57.560	175,9	13:36'29.167
4	37.815	19.028	32.324	28.564	1'57.731	175,0	13:38'26.898
5	39.190	18.778	32.101	28.580	1'58.649	176,2	13:40'25.547
6	37.376	18.795	32.003	28.166	1'56.340	179,4	13:42'21.887
7	37.268	18.729	31.540	28.039	1'55.576	179,4	13:44'17.463
8	38.735	18.973	32.040	28.423	1'58.171	175,0	13:46'15.634
9	37.150	18.792	31.878	28.447	1'56.267	177,3	13:48'11.901
10	37.382	18.710	31.700	27.957	1'55.749	178,5	13:50'07.650
11	36.985	18.648	31.857	28.522	1'56.012	179,4	13:52'03.662
12	37.496	18.884	31.597	<b>27.881</b>	1'55.858	174,5	13:53'59.520
13	37.258	18.861	31.639	28.104	1'55.862	174,8	13:55'55.382
14	37.122	18.819	34.127	29.094	1'59.162	180,0	13:57'54.544
15	37.478	18.754	31.710	28.808	1'56.750	<b>181,2</b>	13:59'51.294
16	<b>36.899</b>	<b>18.647</b>	<b>31.397</b>	28.031	<b>1'54.974</b>	179,1	14:01'46.268

<b>11° 16 M. REPAK (1'55.032)</b>							
Lap	Seg.1	Seg.2	Seg.3	Seg.4	Lap Time	km/h	Local Time
1		20.269	32.550	28.270		177,6	13:32'55.080
2	37.293	18.754	<b>31.466</b>	<b>27.519</b>	<b>1'55.032</b>	177,9	13:34'50.112
3	44.105	19.045	31.954	39.004	2'14.108P	179,1	13:37'04.220
4	2'21.727	<b>18.666</b>	32.532	28.515	3'41.440P	178,5	13:40'45.660
5	38.311	19.041	31.649	43.419	2'12.420P	176,8	13:42'58.080
6	3'40.228	20.272	33.782	28.754	5'03.036P	168,0	13:48'01.116
7	38.550	19.078	32.424	28.899	1'58.951	177,0	13:50'00.067
8	37.439	18.720	31.895	28.577	1'56.631	180,9	13:51'56.698
9	37.627	18.675	31.843	28.317	1'56.462	180,0	13:53'53.160
10	37.946	18.828	32.269	28.396	1'57.439	180,3	13:55'50.599
11	42.319	18.851	33.397	28.890	2'03.457	179,4	13:57'54.056

<b>13° 62 F. JURÁNEK (1'55.132)</b>							
Lap	Seg.1	Seg.2	Seg.3	Seg.4	Lap Time	km/h	Local Time
1		19.748	33.141	28.513		178,8	13:32'56.118
2	38.093	19.059	32.312	28.782	1'58.246	175,0	13:34'54.364
3	38.175	19.707	31.904	28.794	1'58.580	168,5	13:36'52.944
4	37.665	18.862	32.232	28.223	1'56.982	182,4	13:38'49.926
5	37.864	18.783	32.167	28.386	1'57.200	180,0	13:40'47.126
6	37.325	18.618	31.678	39.961	2'07.582P	182,1	13:42'54.708
7	3'41.426	20.606	32.785	28.937	5'03.754P	161,7	13:47'58.462
8	39.393	22.803	32.152	28.322	2'02.670	131,5	13:50'01.132
9	37.109	<b>18.411</b>	31.732	28.237	1'55.489	183,7	13:51'56.621
10	37.463	18.648	31.872	28.330	1'56.313	178,2	13:53'52.934
11	37.671	18.966	32.136	28.635	1'57.408	175,0	13:55'50.342
12	38.865	20.263	34.630	31.243	2'05.001	164,4	13:57'55.343
13	37.128	18.613	31.805	28.140	1'55.686	<b>184,0</b>	13:59'51.029
14	<b>36.857</b>	18.560	<b>31.595</b>	<b>28.120</b>	<b>1'55.132</b>	183,4	14:01'46.161

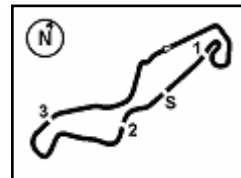
<b>14° 8 F. FLORIAN (1'55.158)</b>							
Lap	Seg.1	Seg.2	Seg.3	Seg.4	Lap Time	km/h	Local Time
1		28.490	38.233	35.654		90,5	13:32'39.132
2	45.259	20.963	36.962	28.306	2'11.490	163,1	13:34'50.622
3	38.736	19.401	33.643	29.532	2'01.312	172,8	13:36'51.934
4	38.227	19.002	32.184	28.392	1'57.805	179,1	13:38'49.739
5	37.767	18.900	32.349	28.621	1'57.637	176,8	13:40'47.376
6	38.230	18.823	32.123	28.080	1'57.256	<b>183,1</b>	13:42'44.632
7	46.101	20.307	33.328	40.895	2'20.631P	167,2	13:45'05.263
8	1'34.975	19.125	33.373	28.862	2'56.335P	176,5	13:48'01.598
9	38.343	18.903	32.442	28.056	1'57.744	180,9	13:49'59.342
10	37.356	18.775	32.073	28.478	1'56.682	176,2	13:51'56.024
11	37.461	19.027	31.872	28.423	1'56.783	175,0	13:53'52.807
12	38.631	18.615	32.536	28.542	1'58.324	181,8	13:55'51.131
13	38.483	19.964	34.352	32.469	2'05.268	168,0	13:57'56.399
14	37.363	<b>18.575</b>	31.895	<b>27.825</b>	1'55.658	<b>183,1</b>	13:59'52.057
15	<b>36.973</b>	18.639	<b>31.460</b>	28.086	<b>1'55.158</b>	179,1	14:01'47.215

<b>15° 61 U. HIDALGO (1'55.162)</b>							
Lap	Seg.1	Seg.2	Seg.3	Seg.4	Lap Time	km/h	Local Time
1		20.482	32.643	28.421		175,3	13:32'55.300
2	37.381	18.943	31.519	28.138	1'55.981	178,8	13:34'51.281
3	41.172	22.688	31.761	28.059	2'03.680	146,9	13:36'54.961
4	36.836	18.574	31.744	28.008	<b>1'55.162</b>	180,0	13:38'50.123
5	40.332	18.869	31.568	<b>27.919</b>	1'58.688	181,2	13:40'48.811
6	37.501	18.602	31.831	41.851	2'09.785P	180,9	13:42'58.596

22/04/2022 P = Pits In/Out - C = Lap Time Cancelled

These data/results cannot be reproduced, stored and/or transmitted in whole or in part by any manner of electronic, mechanical, photocopying, recording, broadcasting or otherwise now known or herein after developed without the previous express consent by the copyright owner, except for reproduction in daily press and regular printed publications on sale to the public within 60 days of the event related to those data/results and always provided that copyright symbol appears together as follows below.

© DORNA WSBK ORGANIZATION Srl 2022

**6.3****Yamaha R3  
731/02**

TT Circuit Assen 4.542 m

**3 / 3****Motul Dutch Round, 22-24 April 2022  
Chronological Analysis Superpole**

7	3'40.345	19.770	33.748	28.809	5'02.672P	175,6	13:48'01.268
8	39.027	18.957	32.140	28.870	1'58.994	182,7	13:50'00.262
9	<b>36.655</b>	18.683	32.020	28.729	1'56.087	178,8	13:51'56.349
10	39.675	18.570	<b>31.217</b>	28.341	1'57.803	178,8	13:53'54.152
11	37.849	<b>18.527</b>	32.217	40.279	2'08.872P	<b>183,4</b>	13:56'03.024
12	2'11.318	18.782	32.000	28.393	3'30.493P	179,1	13:59'33.517
13	37.381	18.813	31.642	28.430	1'56.266	180,3	14:01'29.783

7	46.101	19.851	33.332	40.128	2'19.412P	170,9	13:45'04.166
8	1'36.161	20.092	33.570	28.750	2'58.573P	167,4	13:48'02.739
9	37.699	19.171	33.206	29.055	1'59.131	<b>182,4</b>	13:50'01.870
10	<b>36.974</b>	18.813	31.729	28.219	1'55.735	177,0	13:51'57.605
11	37.205	18.813	<b>31.422</b>	28.818	1'56.258	178,2	13:53'53.863
12	38.358	19.287	31.730	28.384	1'57.759	178,8	13:55'51.622
13	37.832	20.912	35.365	30.570	2'04.679	165,9	13:57'56.301
14	37.796	18.925	31.433	<b>27.401</b>	<b>1'55.555</b>	180,0	13:59'51.856
15	38.567	19.269	32.165	28.579	1'58.580	172,2	14:01'50.436

**16° 46 D. NOWAK (1'55.388)**

Lap	Seg.1	Seg.2	Seg.3	Seg.4	Lap Time	km/h	Local Time
1		26.816	34.857	28.731		94,8	13:32'28.104
2	38.557	19.039	<b>31.403</b>	<b>28.013</b>	1'57.012	175,9	13:34'25.116
3	37.101	18.833	31.530	28.720	1'56.184	180,3	13:36'21.300
4	37.410	19.388	44.125	30.090	2'11.013	168,2	13:38'32.313
5	37.396	18.906	31.765	28.422	1'56.489	178,2	13:40'28.802
6	37.041	18.849	31.876	28.232	1'55.998	177,9	13:42'24.800
7	<b>37.006</b>	<b>18.735</b>	31.495	28.152	<b>1'55.388</b>	179,1	13:44'20.188
8	38.273	19.022	33.225	38.170	2'08.690P	175,9	13:46'28.878
9	2'09.766	22.490	32.201	28.999	3'33.456P	143,8	13:50'02.334
10	38.777	18.817	37.198	31.957	2'06.749	<b>181,5</b>	13:52'09.083

**20° 18 D. PALLADINO (1'55.817)**

Lap	Seg.1	Seg.2	Seg.3	Seg.4	Lap Time	km/h	Local Time
1		21.127	33.001	28.358		161,4	13:32'56.583
2	38.352	19.369	31.931	<b>27.961</b>	1'57.613	<b>182,4</b>	13:34'54.196
3	38.452	19.194	32.077	28.251	1'57.974	179,1	13:36'52.170
4	37.652	18.854	32.301	28.155	1'56.962	177,3	13:38'49.132
5	<b>37.037</b>	18.878	32.060	28.794	1'56.769	181,5	13:40'45.901
6	<b>37.037</b>	18.914	32.071	28.689	1'56.711	176,2	13:42'42.612
7	48.059	19.825	33.217	36.752	2'17.853P	170,6	13:45'00.465
8	1'47.506	20.734	33.913	28.974	3'11.127P	162,4	13:48'11.592
9	37.414	18.851	31.725	28.347	1'56.337	177,6	13:50'07.929
10	37.096	<b>18.593</b>	31.609	28.242	1'55.540C	182,1	13:52'03.469
11	37.284	18.975	31.804	28.224	1'56.287C	173,6	13:53'59.756
12	45.046	19.920	33.853	35.680	2'14.499P	169,8	13:56'14.255
13	2'02.726	18.889	32.056	28.273	3'21.944P	177,9	13:59'36.199
14	37.404	18.881	<b>31.312</b>	28.220	<b>1'55.817</b>	175,9	14:01'32.016

**17° 88 E. BURR (1'55.395)**

Lap	Seg.1	Seg.2	Seg.3	Seg.4	Lap Time	km/h	Local Time
1		19.720	32.336	28.281		176,8	13:32'54.359
2	37.846	19.095	31.631	27.758	1'56.330	173,9	13:34'50.689
3	37.364	19.385	32.040	29.099	1'57.888	170,1	13:36'48.577
4	44.513	18.855	32.119	28.208	2'03.695	178,5	13:38'52.272
5	37.604	18.949	31.916	28.138	1'56.607	177,0	13:40'48.879
6	<b>37.101</b>	<b>18.643</b>	32.000	28.172	1'55.916	<b>182,7</b>	13:42'44.795
7	44.045	19.078	31.992	38.545	2'13.660P	174,2	13:44'58.455
8	1'42.482	21.288	31.826	27.991	3'03.587P	162,9	13:48'02.042
9	38.497	19.058	32.295	31.083	2'00.933	182,1	13:50'02.975
10	37.218	18.911	31.623	<b>27.643</b>	<b>1'55.395</b>	175,0	13:51'58.370
11	37.330	18.668	<b>31.307</b>	28.523	1'55.828	182,4	13:53'54.198
12	38.208	18.814	31.766	28.231	1'57.019	182,1	13:55'51.217
13	37.809	19.334	35.002	40.948	2'13.093P	170,9	13:58'04.310
14					3'56.971P		14:02'01.281

**21° 89 W. NUGROHO (1'56.029)**

Lap	Seg.1	Seg.2	Seg.3	Seg.4	Lap Time	km/h	Local Time
1		19.942	33.775	31.729		169,0	13:32'33.849
2	37.757	19.157	32.253	28.500	1'57.667	<b>178,8</b>	13:34'31.516
3	38.763	19.050	31.846	29.014	1'58.673	174,8	13:36'30.189
4	37.452	18.976	31.870	28.090	1'56.388	175,6	13:38'26.577
5	38.627	19.303	32.070	48.984	2'18.984P	170,1	13:40'45.561
6	2'37.309	19.678	35.151	28.575	4'00.713P	167,4	13:44'46.274
7	37.938	19.070	32.228	45.552	2'14.788P	172,8	13:47'01.062
8	1'54.715	19.354	32.980	28.654	3'15.703P	172,2	13:50'16.765
9	37.906	19.341	32.477	28.451	1'58.175	173,4	13:52'14.940
10	37.917	19.027	31.972	28.571	1'57.487	173,6	13:54'12.427
11	37.623	18.941	31.963	43.106	2'11.633P	174,8	13:56'24.060
12	1'53.200	<b>18.748</b>	32.327	28.607	3'12.882P	177,9	13:59'36.942
13	<b>37.415</b>	18.768	<b>31.819</b>	<b>28.027</b>	<b>1'56.029</b>	177,6	14:01'32.971

**18° 69 A. MC DONALD (1'55.416)**

Lap	Seg.1	Seg.2	Seg.3	Seg.4	Lap Time	km/h	Local Time
1		23.068	33.183	28.173		147,1	13:32'56.784
2	37.764	18.941	32.200	27.991	1'56.896	175,9	13:34'53.680
3	37.181	19.166	32.422	28.793	1'57.562	172,5	13:36'51.242
4	39.252	18.724	31.868	<b>27.798</b>	1'57.642	180,9	13:38'48.884
5	37.199	18.678	31.969	28.401	1'56.247	179,4	13:40'45.131
6	40.833	18.881	<b>31.792</b>	28.514	2'00.020	182,1	13:42'45.151
7	37.447	18.971	31.841	28.369	1'56.628	173,9	13:44'41.779
8	38.031	20.115	31.961	45.138	2'15.245P	157,0	13:46'57.024
9	1'40.541	23.034	32.224	27.998	3'03.797P	129,2	13:50'00.821
10	<b>36.922</b>	<b>18.541</b>	31.985	27.968	<b>1'55.416</b>	181,8	13:51'56.237
11	37.414	18.990	32.280	28.781	1'57.465	177,9	13:53'53.702
12	38.144	18.562	32.110	40.945	2'09.761P	<b>182,4</b>	13:56'03.463
13	2'10.715	19.111	31.899	28.413	3'30.138CP	175,0	13:59'33.601
14	37.052	18.916	31.797	28.481	1'56.246	174,8	14:01'29.847

**22° 25 T. HORN (1'56.272)**

Lap	Seg.1	Seg.2	Seg.3	Seg.4	Lap Time	km/h	Local Time
1		21.906	33.949	28.665		148,4	13:32'28.469
2	37.442	19.096	31.695	28.160	1'56.393	174,2	13:34'24.862
3	<b>37.103</b>	18.930	31.561	28.744	1'56.338	176,5	13:36'21.200
4	47.386	19.027	32.044	28.157	2'06.614	175,3	13:38'27.814
5	37.382	18.703	31.982	28.205	<b>1'56.272</b>	<b>179,1</b>	13:40'24.086
6	37.265	18.882	31.683	28.999	1'56.829	175,9	13:42'20.915
7	37.797	18.680	31.774	28.576	1'56.827	176,2	13:44'17.742
8	37.339	19.039	32.141	28.863	1'57.382	173,4	13:46'15.124
9	40.989	18.777	<b>31.145</b>	<b>27.782</b>	1'58.693	178,8	13:48'13.817

**19° 42 C. GIMENEZ (1'55.555)**

Lap	Seg.1	Seg.2	Seg.3	Seg.4	Lap Time	km/h	Local Time
1		22.665	33.298	28.456		140,6	13:32'55.860
2	38.832	19.493	31.761	27.845	1'57.931	174,2	13:34'53.791
3	37.345	19.118	32.080	28.690	1'57.233	174,2	13:36'51.024
4	41.671	19.401	32.063	28.280	2'01.415	172,0	13:38'52.439
5	37.699	19.026	31.591	28.421	1'56.737	177,6	13:40'49.176
6	37.306	<b>18.751</b>	31.637	27.884	1'55.578	179,7	13:42'44.754

**23° 56 V. GELLY (1'58.534)**

Lap	Seg.1	Seg.2	Seg.3	Seg.4	Lap Time	km/h	Local Time
1		22.392	34.198	29.165		152,5	13:32'29.687
2	37.872	19.576	32.639	<b>28.741</b>	1'58.828	170,1	13:34'28.515
3	37.795	19.501	<b>32.434</b>	28.934	1'58.664	<b>171,4</b>	13:36'27.179
4	<b>37.500</b>	<b>19.329</b>	32.602	29.103	<b>1'58.534</b>	171,2	13:38'25.713

22/04/2022 P = Pits In/Out - C = Lap Time Cancelled

These data/results cannot be reproduced, stored and/or transmitted in whole or in part by any manner of electronic, mechanical, photocopying, recording, broadcasting or otherwise now known or herein after developed without the previous express consent by the copyright owner, except for reproduction in daily press and regular printed publications on sale to the public within 60 days of the event related to those data/results and always provided that copyright symbol appears together as follows below.

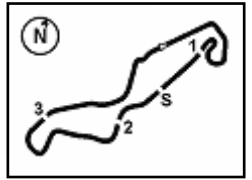
© DORNA WSBK ORGANIZATION Srl 2022





6.4

Yamaha R3  
731/02



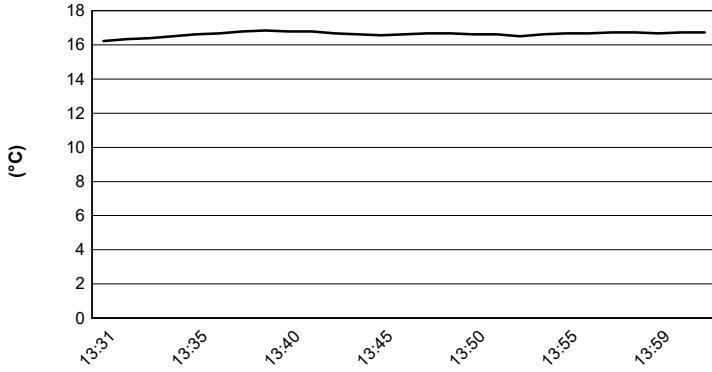
TT Circuit Assen 4.542 m

# Motul Dutch Round, 22-24 April 2022

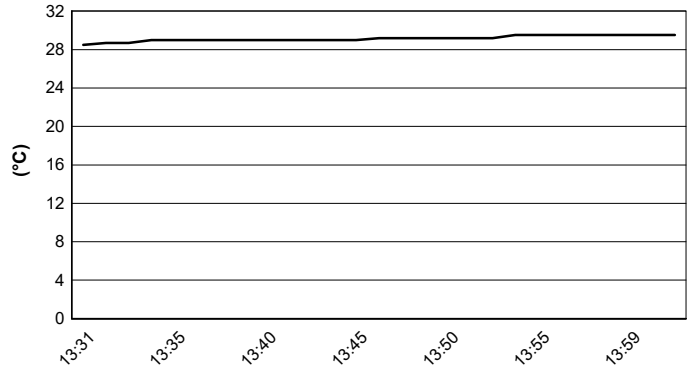
## Weather Report Superpole

Session started 13:30 - Session ended 14:02

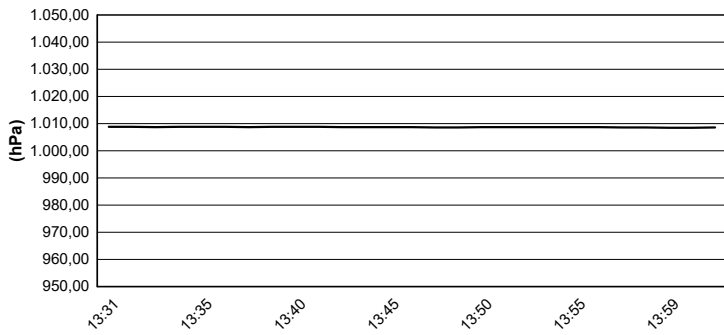
### Air Temperature



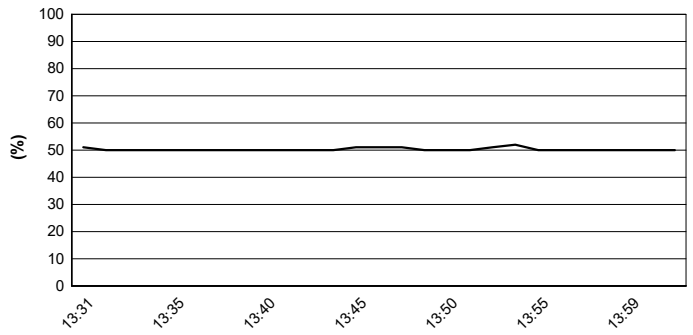
### Track Temperature



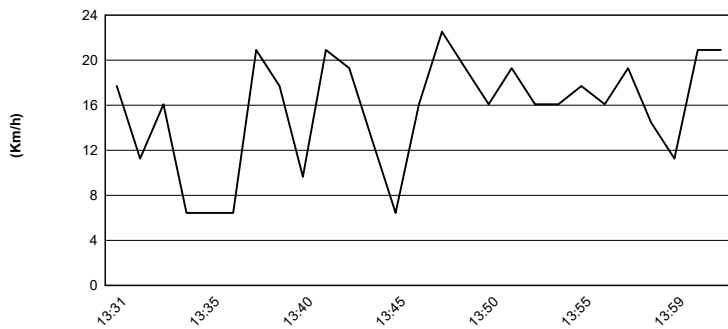
### Air Pressure



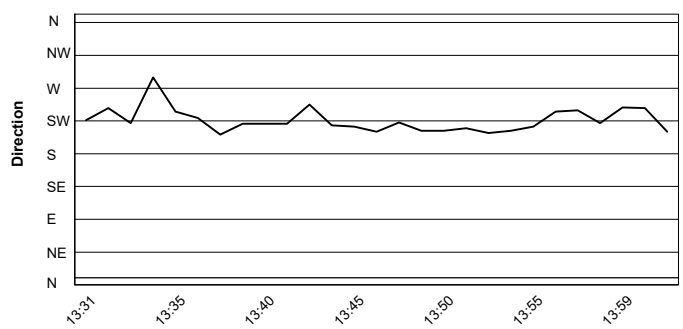
### Humidity



### Wind Speed



### Wind Direction



22/04/2022

These data/results cannot be reproduced, stored and/or transmitted in whole or in part by any manner of electronic, mechanical, photocopying, recording, broadcasting or otherwise now known or herein after developed without the previous express consent by the copyright owner, except for reproduction in daily press and regular printed publications on sale to the public within 60 days of the event related to those data/results and always provided that copyright symbol appears together as follows below.

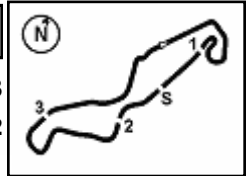
© DORNA WSBK ORGANIZATION Srl 2022



6.5

Yamaha R3

731/02



TT Circuit Assen 4.542 m

## Motul Dutch Round, 22-24 April 2022

## Best Lap &amp; Speed

No.	Rider Bike	Nat	Best Lap		FP		SP									
			LL	SPD	LL	SPD	LL	SPD								
1	<b>39 E. VALENTIM</b> Yamaha R3	BRA	<b>1'52.683</b>	25 183,6	1'55.055	13 181,8	<b>1'52.683</b>	12 <b>183,6</b>								
2	<b>80 G. MANSO</b> Yamaha R3	BRA	<b>1'53.783</b>	26 182,7	1'55.623	12 177,6	<b>1'53.783</b>	14 <b>182,7</b>								
3	<b>37 A. PIZZOLI</b> Yamaha R3	ITA	<b>1'53.940</b>	26 184,6	1'55.675	13 176,4	<b>1'53.940</b>	13 <b>184,6</b>								
4	<b>32 K. KEANKUM</b> Yamaha R3	THA	<b>1'54.048</b>	28 185,8	1'56.967	13 182,7	<b>1'54.048</b>	15 <b>185,8</b>								
5	<b>45 C. ROUGÉ</b> Yamaha R3	FRA	<b>1'54.117</b>	27 183,3	1'55.311	14 179,4	<b>1'54.117</b>	13 <b>183,3</b>								
6	<b>13 D. BERGAMINI</b> Yamaha R3	ITA	<b>1'54.442</b>	26 185,5	1'55.241	13 177,9	<b>1'54.442</b>	13 <b>185,5</b>								
7	<b>26 K. FONTAINHA</b> Yamaha R3	BRA	<b>1'54.518</b>	27 180,9	1'56.227	13 179,7	<b>1'54.518</b>	14 <b>180,9</b>								
8	<b>47 J. KUSMIERCZYK</b> Yamaha R3	POL	<b>1'54.532</b>	27 184,3	1'55.862	13 178,5	<b>1'54.532</b>	14 <b>184,3</b>								
9	<b>96 M. VICH</b> Yamaha R3	ESP	<b>1'54.580</b>	25 184,6	1'56.204	13 178,5	<b>1'54.580</b>	12 <b>184,6</b>								
10	<b>10 G. CARBONNEL</b> Yamaha R3	FRA	<b>1'54.974</b>	29 181,2	1'56.558	14 179,1	<b>1'54.974</b>	15 <b>181,2</b>								
11	<b>16 M. REPAK</b> Yamaha R3	SLO	<b>1'55.032</b>	25 182,4	1'56.882	13 179,4	<b>1'55.032</b>	12 <b>182,4</b>								
12	<b>55 B. CROCKFORD</b> Yamaha R3	GBR	<b>1'55.131</b>	26 181,8	1'56.715	13 177,6	<b>1'55.131</b>	13 <b>181,8</b>								
13	<b>62 F. JURÁNEK</b> Yamaha R3	CZE	<b>1'55.132</b>	24 183,9	1'57.623	11 181,8	<b>1'55.132</b>	13 <b>183,9</b>								
14	<b>8 F. FLORIAN</b> Yamaha R3	BRA	<b>1'55.158</b>	26 183,0	1'57.504	12 176,7	<b>1'55.158</b>	14 <b>183,0</b>								
15	<b>61 U. HIDALGO</b> Yamaha R3	ESP	<b>1'55.162</b>	25 183,3	1'56.473	13 180,0	<b>1'55.162</b>	12 <b>183,3</b>								
16	<b>46 D. NOWAK</b> Yamaha R3	POL	<b>1'55.388</b>	22 181,5	1'57.280	13 178,2	<b>1'55.388</b>	9 <b>181,5</b>								
17	<b>88 E. BURR</b> Yamaha R3	BRA	<b>1'55.395</b>	26 182,7	1'57.050	13 180,0	<b>1'55.395</b>	13 <b>182,7</b>								
18	<b>69 A. MC DONALD</b> Yamaha R3	AUS	<b>1'55.416</b>	26 182,4	1'56.628	13 179,1	<b>1'55.416</b>	13 <b>182,4</b>								
19	<b>42 C. GIMENEZ</b> Yamaha R3	ESP	<b>1'55.555</b>	27 182,4	1'56.760	13 179,4	<b>1'55.555</b>	14 <b>182,4</b>								
20	<b>18 D. PALLADINO</b> Yamaha R3	ITA	<b>1'55.817</b>	26 182,4	1'57.267	13 177,0	<b>1'55.817</b>	13 <b>182,4</b>								
21	<b>89 W. NUGROHO</b> Yamaha R3	INA	<b>1'56.029</b>	26 180,9	1'56.150	14 <b>180,9</b>	<b>1'56.029</b>	12 178,8								
22	<b>25 T. HORN</b> Yamaha R3	USA	<b>1'56.272</b>	21 179,1	1'57.338	13 <b>179,1</b>	<b>1'56.272</b>	8 <b>179,1</b>								
23	<b>56 V. GELLY</b> Yamaha R3	FRA	<b>1'58.008</b>	16 173,3	<b>1'58.008</b>	13 <b>173,3</b>	1'58.534	3 171,4								

22/04/2022

These data/results cannot be reproduced, stored and/or transmitted in whole or in part by any manner of electronic, mechanical, photocopying, recording, broadcasting or otherwise now known or herein after developed without the previous express consent by the copyright owner, except for reproduction in daily press and regular printed publications on sale to the public within 60 days of the event related to those data/results and always provided that copyright symbol appears together as follows below.

© DORNA WSBK ORGANIZATION Srl 2022

PERUGIA TIMING