

**Pirelli Emilia-Romagna Round, 14-16 June 2024**

**Results Tissot Superpole**

Misano Circuit Sic 58 4.226 m

1 / 2

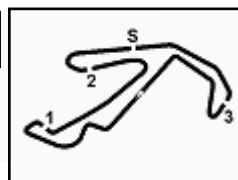
No.	Rider	Nat	Team	Bike	Time	Gap	Rel.	Laps	Speed	
									Avg	Max
1	<b>6 M. HERRERA</b>	ESP	Klint Forward Factory Team	Yamaha YZF-R7	<b>1'49.390</b>			13	139,077	<b>193,2</b>
2	<b>64 S. SANCHEZ</b>	ESP	511 Terra&Vita Racing Team	Yamaha YZF-R7	<b>1'49.441</b>	0.051	0.051	13	139,012	<b>185,6</b>
3	<b>22 A. CARRASCO</b>	ESP	Evan Bros Racing Yamaha Team	Yamaha YZF-R7	<b>1'49.514</b>	0.124	0.073	12	138,919	<b>191,2</b>
4	<b>96 R. PONZIANI</b>	ITA	Yamaha Motoxracing WCR Team	Yamaha YZF-R7	<b>1'49.573</b>	0.183	0.059	13	138,844	<b>191,2</b>
5	<b>52 J. HOWDEN</b>	RSA	Team Trasimeno	Yamaha YZF-R7	<b>1'50.115</b>	0.725	0.542	12	138,161	<b>191,8</b>
6	<b>99 I. CARRENO</b>	CHI	AD78 FIM Latinoamerica by Team GP3	Yamaha YZF-R7	<b>1'50.116</b>	0.726	0.001	11	138,160	<b>191,5</b>
7	<b>36 B. NEILA</b>	ESP	Ampito / Pata Prometeon Yamaha	Yamaha YZF-R7	<b>1'50.437</b>	1.047	0.321	12	137,758	<b>187,8</b>
8	<b>28 O. ONGARO</b>	FRA	Yamaha Motoxracing WCR Team	Yamaha YZF-R7	<b>1'51.153</b>	1.763	0.716	13	136,871	<b>191,5</b>
9	<b>16 L. MICHEL</b>	GER	TSL-Racing	Yamaha YZF-R7	<b>1'51.224</b>	1.834	0.071	13	136,783	<b>195,7</b>
10	<b>46 P. RUIZ</b>	ESP	PS Racing Team 46+1	Yamaha YZF-R7	<b>1'51.560</b>	2.170	0.336	12	136,371	<b>187,8</b>
11	<b>33 C. LIU</b>	TPE	WT Racing Team Taiwan	Yamaha YZF-R7	<b>1'51.634</b>	2.244	0.074	12	136,281	<b>185,9</b>
12	<b>10 R. YOCHAY</b>	ISR	511 Terra&Vita Racing Team	Yamaha YZF-R7	<b>1'51.798</b>	2.408	0.164	13	136,081	<b>187,5</b>
13	<b>35 L. KEMMER</b>	AUT	Berti K. Racing Team	Yamaha YZF-R7	<b>1'51.880</b>	2.490	0.082	12	135,981	<b>188,5</b>
14	<b>21 N. VAN ASWEGEN</b>	RSA	Andalaft Racing	Yamaha YZF-R7	<b>1'52.475</b>	3.085	0.595	12	135,262	<b>193,9</b>
15	<b>29 M. RUSTHEN</b>	NDR	Rusthen Racing	Yamaha YZF-R7	<b>1'52.646</b>	3.256	0.171	13	135,057	<b>189,8</b>
16	<b>8 T. RELPH</b>	AUS	TAYCO Motorsport	Yamaha YZF-R7	<b>1'52.837</b>	3.447	0.191	11	134,828	<b>192,9</b>
17	<b>19 A. OUREDNIKOVA</b>	CZE	DafitMotoracing by Smzr	Yamaha YZF-R7	<b>1'53.025</b>	3.635	0.188	13	134,604	<b>189,5</b>
18	<b>14 M. DOBBS</b>	USA	Sekhmet Motorcycle Racing Team	Yamaha YZF-R7	<b>1'53.026</b>	3.636	0.001	12	134,603	<b>191,5</b>
19	<b>83 A. MADRIGAL</b>	MEX	ITALIKA Racing FIMLA	Yamaha YZF-R7	<b>1'53.753</b>	4.363	0.727	12	133,742	<b>188,2</b>
20	<b>53 I. NADIEIEVA</b>	UKR	MPS.RT	Yamaha YZF-R7	<b>1'53.754</b>	4.364	0.001	11	133,741	<b>188,5</b>
21	<b>94 B. BARBERA</b>	ITA	Team GP3 AD11 by Tirso	Yamaha YZF-R7	<b>1'53.805</b>	4.415	0.051	11	133,681	<b>195,3</b>
22	<b>77 A. SIBAJA</b>	ESP	Deza - Box 77 Racing Team	Yamaha YZF-R7	<b>1'54.717</b>	5.327	0.912	12	132,619	<b>187,8</b>
23	<b>44 L. HIRANO</b>	JPN	Team Luna	Yamaha YZF-R7	<b>1'54.965</b>	5.575	0.248	12	132,332	<b>184,6</b>
24	<b>4 E. BONDI</b>	FRA	YART Zelos Black Knights Team	Yamaha YZF-R7	<b>1'55.064</b>	5.674	0.099	12	132,219	<b>184,0</b>
25	<b>34 A. WHITMORE</b>	GBR	Sekhmet Motorcycle Racing Team	Yamaha YZF-R7	<b>1'55.482</b>	6.092	0.418	11	131,740	<b>184,9</b>
26	<b>5 K. SILFA</b>	DOM	ITALIKA Racing FIMLA	Yamaha YZF-R7	<b>1'57.805</b>	8.415	2.323	10	129,142	<b>186,9</b>

AIR	Humidity:	51%	Temp:	25°C
TRACK	Condition:	Dry	Temp:	41°C

Start 14/06/2024 13:25 End 13:54 The results are provisional until the end of the time limit for protests and appeals and the completion of the technical checks.

These data/results cannot be reproduced, stored and/or transmitted in whole or in part by any manner of electronic, mechanical, photocopying, recording, broadcasting or otherwise now known or herein after developed without the previous express consent by the copyright owner, except for reproduction in daily press and regular printed publications on sale to the public within 60 days of the event related to those data/results and always provided that copyright symbol appears together as follows below.

© DORNA WSBK ORGANIZATION Srl 2024



**Pirelli Emilia-Romagna Round, 14-16 June 2024**  
**Results Tissot Superpole**

Misano Circuit Sic 58 4.226 m

2 / 2

**Session Highlights**

Local Time	No. Rider	Description
13.25.00		Start of Session
13.31.26	<b>52</b> J. <b>HOWDEN</b>	#52 Current Lap Cancelled - Exceeded Track Limits - Turn 1
13.33.58	<b>6</b> M. <b>HERRERA</b>	#6 Current Lap Cancelled - Exceeded Track Limits - Turn 1
13.39.13	<b>52</b> J. <b>HOWDEN</b>	#52 Current Lap Cancelled - Exceeded Track Limits - Turn 1
13.42.14	<b>64</b> S. <b>SANCHEZ</b>	#64 On the Gravel - Rejoined - Turn 4
13.44.31	<b>96</b> R. <b>PONZIANI</b>	#96 Current Lap Cancelled - Exceeded Track Limits - Turn 1
13.45.09	<b>52</b> J. <b>HOWDEN</b>	#52 Current Lap Cancelled - Exceeded Track Limits - Turn 1
13.46.59	<b>34</b> A. <b>WHITMORE</b>	#34 Current Lap Cancelled - Exceeded Track Limits - Turn 1
13.54.43		End of Session

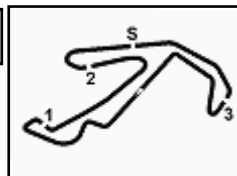
**Fastest Laps Sequence**

No.	Rider	Nat	Team	Bike	Local Time	Time	Gap	Avg
<b>44</b>	L. <b>HIRANO</b>	JPN	Team Luna	Yamaha YZF-R7	13:29'12.456	<b>1'57.659</b>		129,302
<b>28</b>	D. <b>ONGARO</b>	FRA	Yamaha Motoxracing WCR Team	Yamaha YZF-R7	13:29'12.681	<b>1'55.178</b>	-2.481	132,088
<b>96</b>	R. <b>PONZIANI</b>	ITA	Yamaha Motoxracing WCR Team	Yamaha YZF-R7	13:29'21.037	<b>1'52.487</b>	-2.691	135,248
<b>6</b>	M. <b>HERRERA</b>	ESP	Klint Forward Factory Team	Yamaha YZF-R7	13:29'22.341	<b>1'50.807</b>	-1.680	137,298
<b>22</b>	A. <b>CARRASCO</b>	ESP	Evan Bros Racing Yamaha Team	Yamaha YZF-R7	13:29'43.693	<b>1'50.732</b>	-0.075	137,391
<b>6</b>	M. <b>HERRERA</b>	ESP	Klint Forward Factory Team	Yamaha YZF-R7	13:31'12.420	<b>1'50.079</b>	-0.653	138,206
<b>6</b>	M. <b>HERRERA</b>	ESP	Klint Forward Factory Team	Yamaha YZF-R7	13:39'22.076	<b>1'50.060</b>	-0.019	138,230
<b>22</b>	A. <b>CARRASCO</b>	ESP	Evan Bros Racing Yamaha Team	Yamaha YZF-R7	13:40'48.037	<b>1'49.658</b>	-0.402	138,737
<b>64</b>	S. <b>SANCHEZ</b>	ESP	511 Terra&Vita Racing Team	Yamaha YZF-R7	13:47'23.102	<b>1'49.517</b>	-0.141	138,915
<b>6</b>	M. <b>HERRERA</b>	ESP	Klint Forward Factory Team	Yamaha YZF-R7	13:48'35.651	<b>1'49.390</b>	-0.127	139,077

14/06/2024 Start 13:25 End 13:54 The results are provisional until the end of the time limit for protests and appeals and the completion of the technical checks.

These data/results cannot be reproduced, stored and/or transmitted in whole or in part by any manner of electronic, mechanical, photocopying, recording, broadcasting or otherwise now known or herein after developed without the previous express consent by the copyright owner, except for reproduction in daily press and regular printed publications on sale to the public within 60 days of the event related to those data/results and always provided that copyright symbol appears together as follows below.

© DORNA WSBK ORGANIZATION Srl 2024



**Pirelli Emilia-Romagna Round, 14-16 June 2024  
Best Sectors & Speed Tissot Superpole**

Misano Circuit Sic 58 4.226 m

**BEST LAP**

1	<b>6</b> M. HERRERA	Yamaha YZF-R7	1'49.390
2	<b>64</b> S. SANCHEZ	Yamaha YZF-R7	1'49.441
3	<b>22</b> A. CARRASCO	Yamaha YZF-R7	1'49.514
4	<b>96</b> R. PONZIANI	Yamaha YZF-R7	1'49.573
5	<b>52</b> J. HOWDEN	Yamaha YZF-R7	1'50.115
6	<b>99</b> I. CARRENO	Yamaha YZF-R7	1'50.116
7	<b>36</b> B. NEILA	Yamaha YZF-R7	1'50.437
8	<b>28</b> D. ONGARO	Yamaha YZF-R7	1'51.153
9	<b>16</b> L. MICHEL	Yamaha YZF-R7	1'51.224
10	<b>46</b> P. RUIZ	Yamaha YZF-R7	1'51.560
11	<b>33</b> C. LIU	Yamaha YZF-R7	1'51.634
12	<b>10</b> R. YOCHAY	Yamaha YZF-R7	1'51.798
13	<b>35</b> L. KEMMER	Yamaha YZF-R7	1'51.880
14	<b>21</b> N. VAN ASWEGEN	Yamaha YZF-R7	1'52.475
15	<b>29</b> M. RUSTHEN	Yamaha YZF-R7	1'52.646
16	<b>8</b> T. RELPH	Yamaha YZF-R7	1'52.837
17	<b>19</b> A. OUREDNICKOVA	Yamaha YZF-R7	1'53.025
18	<b>14</b> M. DOBBS	Yamaha YZF-R7	1'53.026
19	<b>83</b> A. MADRIGAL	Yamaha YZF-R7	1'53.753
20	<b>53</b> I. NADIEIEVA	Yamaha YZF-R7	1'53.754
21	<b>94</b> B. BARBERA	Yamaha YZF-R7	1'53.805
22	<b>77</b> A. SIBAJA	Yamaha YZF-R7	1'54.717
23	<b>44</b> L. HIRANO	Yamaha YZF-R7	1'54.965
24	<b>4</b> E. BONDI	Yamaha YZF-R7	1'55.064
25	<b>34</b> A. WHITMORE	Yamaha YZF-R7	1'55.482
26	<b>5</b> K. SILFA	Yamaha YZF-R7	1'57.805

**SPEED**

1	<b>16</b> L. MICHEL	Yamaha YZF-R7	195,7
2	<b>94</b> B. BARBERA	Yamaha YZF-R7	195,3
3	<b>21</b> N. VAN ASWEGEN	Yamaha YZF-R7	193,9
4	<b>6</b> M. HERRERA	Yamaha YZF-R7	193,2
5	<b>8</b> T. RELPH	Yamaha YZF-R7	192,9
6	<b>52</b> J. HOWDEN	Yamaha YZF-R7	191,8
7	<b>28</b> D. ONGARO	Yamaha YZF-R7	191,5
8	<b>14</b> M. DOBBS	Yamaha YZF-R7	191,5
9	<b>99</b> I. CARRENO	Yamaha YZF-R7	191,5
10	<b>96</b> R. PONZIANI	Yamaha YZF-R7	191,2
11	<b>22</b> A. CARRASCO	Yamaha YZF-R7	191,2
12	<b>29</b> M. RUSTHEN	Yamaha YZF-R7	189,8
13	<b>19</b> A. OUREDNICKOVA	Yamaha YZF-R7	189,5
14	<b>35</b> L. KEMMER	Yamaha YZF-R7	188,5
15	<b>53</b> I. NADIEIEVA	Yamaha YZF-R7	188,5
16	<b>83</b> A. MADRIGAL	Yamaha YZF-R7	188,2
17	<b>77</b> A. SIBAJA	Yamaha YZF-R7	187,8
18	<b>46</b> P. RUIZ	Yamaha YZF-R7	187,8
19	<b>36</b> B. NEILA	Yamaha YZF-R7	187,8
20	<b>10</b> R. YOCHAY	Yamaha YZF-R7	187,5
21	<b>5</b> K. SILFA	Yamaha YZF-R7	186,9
22	<b>33</b> C. LIU	Yamaha YZF-R7	185,9
23	<b>64</b> S. SANCHEZ	Yamaha YZF-R7	185,6
24	<b>34</b> A. WHITMORE	Yamaha YZF-R7	184,9
25	<b>44</b> L. HIRANO	Yamaha YZF-R7	184,6
26	<b>4</b> E. BONDI	Yamaha YZF-R7	184,0

**SEG. 1**

1	<b>22</b> A. CARRASCO	28.656
2	<b>6</b> M. HERRERA	28.701
3	<b>96</b> R. PONZIANI	28.750
4	<b>99</b> I. CARRENO	28.793
5	<b>64</b> S. SANCHEZ	28.925
6	<b>33</b> C. LIU	29.068
7	<b>52</b> J. HOWDEN	29.077
8	<b>36</b> B. NEILA	29.237
9	<b>28</b> D. ONGARO	29.304
10	<b>35</b> L. KEMMER	29.333
11	<b>16</b> L. MICHEL	29.403
12	<b>46</b> P. RUIZ	29.461
13	<b>8</b> T. RELPH	29.568
14	<b>21</b> N. VAN ASWEGEN	29.745
15	<b>29</b> M. RUSTHEN	29.756
16	<b>10</b> R. YOCHAY	29.760
17	<b>19</b> A. OUREDNICKOVA	29.935
18	<b>83</b> A. MADRIGAL	29.959
19	<b>14</b> M. DOBBS	29.990
20	<b>4</b> E. BONDI	30.169
21	<b>94</b> B. BARBERA	30.237
22	<b>77</b> A. SIBAJA	30.308
23	<b>53</b> I. NADIEIEVA	30.350
24	<b>44</b> L. HIRANO	30.361
25	<b>34</b> A. WHITMORE	30.413
26	<b>5</b> K. SILFA	31.210

**SEG. 2**

1	<b>96</b> R. PONZIANI	25.536
2	<b>64</b> S. SANCHEZ	25.643
3	<b>22</b> A. CARRASCO	25.783
4	<b>6</b> M. HERRERA	25.860
5	<b>36</b> B. NEILA	25.874
6	<b>28</b> D. ONGARO	25.940
7	<b>52</b> J. HOWDEN	25.946
8	<b>99</b> I. CARRENO	26.103
9	<b>10</b> R. YOCHAY	26.201
10	<b>46</b> P. RUIZ	26.220
11	<b>16</b> L. MICHEL	26.230
12	<b>14</b> M. DOBBS	26.265
13	<b>29</b> M. RUSTHEN	26.271
14	<b>94</b> B. BARBERA	26.456
15	<b>53</b> I. NADIEIEVA	26.483
16	<b>21</b> N. VAN ASWEGEN	26.532
17	<b>35</b> L. KEMMER	26.545
18	<b>8</b> T. RELPH	26.561
19	<b>33</b> C. LIU	26.569
20	<b>83</b> A. MADRIGAL	26.583
21	<b>77</b> A. SIBAJA	26.621
22	<b>19</b> A. OUREDNICKOVA	26.730
23	<b>34</b> A. WHITMORE	26.891
24	<b>4</b> E. BONDI	27.056
25	<b>44</b> L. HIRANO	27.117
26	<b>5</b> K. SILFA	27.847

**SEG. 3**

1	<b>6</b> M. HERRERA	30.540
2	<b>64</b> S. SANCHEZ	30.693
3	<b>22</b> A. CARRASCO	30.696
4	<b>52</b> J. HOWDEN	30.749
5	<b>96</b> R. PONZIANI	30.875
6	<b>99</b> I. CARRENO	30.938
7	<b>36</b> B. NEILA	31.082
8	<b>16</b> L. MICHEL	31.086
9	<b>28</b> D. ONGARO	31.094
10	<b>10</b> R. YOCHAY	31.231
11	<b>33</b> C. LIU	31.237
12	<b>21</b> N. VAN ASWEGEN	31.273
13	<b>19</b> A. OUREDNICKOVA	31.310
14	<b>8</b> T. RELPH	31.333
15	<b>35</b> L. KEMMER	31.438
16	<b>94</b> B. BARBERA	31.505
17	<b>53</b> I. NADIEIEVA	31.589
18	<b>46</b> P. RUIZ	31.621
19	<b>29</b> M. RUSTHEN	31.634
20	<b>83</b> A. MADRIGAL	31.724
21	<b>14</b> M. DOBBS	31.816
22	<b>44</b> L. HIRANO	32.075
23	<b>4</b> E. BONDI	32.309
24	<b>77</b> A. SIBAJA	32.428
25	<b>34</b> A. WHITMORE	32.461
26	<b>5</b> K. SILFA	32.747

**SEG. 4**

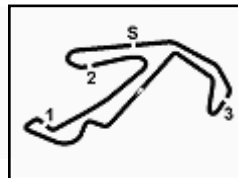
1	<b>6</b> M. HERRERA	23.913
2	<b>64</b> S. SANCHEZ	23.981
3	<b>99</b> I. CARRENO	24.011
4	<b>22</b> A. CARRASCO	24.031
5	<b>96</b> R. PONZIANI	24.110
6	<b>36</b> B. NEILA	24.153
7	<b>46</b> P. RUIZ	24.237
8	<b>52</b> J. HOWDEN	24.320
9	<b>10</b> R. YOCHAY	24.386
10	<b>16</b> L. MICHEL	24.395
11	<b>33</b> C. LIU	24.424
12	<b>35</b> L. KEMMER	24.504
13	<b>28</b> D. ONGARO	24.598
14	<b>29</b> M. RUSTHEN	24.617
15	<b>8</b> T. RELPH	24.671
16	<b>14</b> M. DOBBS	24.759
17	<b>21</b> N. VAN ASWEGEN	24.893
18	<b>83</b> A. MADRIGAL	24.921
19	<b>53</b> I. NADIEIEVA	24.940
20	<b>19</b> A. OUREDNICKOVA	25.036
21	<b>94</b> B. BARBERA	25.060
22	<b>77</b> A. SIBAJA	25.080
23	<b>44</b> L. HIRANO	25.141
24	<b>4</b> E. BONDI	25.264
25	<b>34</b> A. WHITMORE	25.428
26	<b>5</b> K. SILFA	25.749

14/06/2024

These data/results cannot be reproduced, stored and/or transmitted in whole or in part by any manner of electronic, mechanical, photocopying, recording, broadcasting or otherwise now known or herein after developed without the previous express consent by the copyright owner, except for reproduction in daily press and regular printed publications on sale to the public within 60 days of the event related to those data/results and always provided that copyright symbol appears together as follows below.

© DORNA WSBK ORGANIZATION Srl 2024





**Pirelli Emilia-Romagna Round, 14-16 June 2024**

**Ideal Times Tissot Superpole**

Misano Circuit Sic 58 4.226 m

No.	Rider	Nat	Bike	Seg. 1	Seg. 2	Seg. 3	Seg. 4	Ideal Time		
				Diff. 1	Diff. 2	Diff. 3	Diff. 4	Best Lap	Pos.	Diff.
1	<b>6 M. HERRERA</b>	ESP	Yamaha YZF-R7	28.701 +0.048	25.860 +0.146	<b>30.540</b> +0.182	<b>23.913</b>	<b>1'49.014</b> 1'49.390	1	0.376
2	<b>22 A. CARRASCO</b>	ESP	Yamaha YZF-R7	<b>28.656</b>	25.783 +0.140	30.696 +0.208	24.031	<b>1'49.166</b> 1'49.514	3	0.348
3	<b>64 S. SANCHEZ</b>	ESP	Yamaha YZF-R7	28.925 +0.100	25.643	30.693 +0.066	23.981 +0.033	<b>1'49.242</b> 1'49.441	2	0.199
4	<b>96 R. PONZIANI</b>	ITA	Yamaha YZF-R7	28.750	<b>25.536</b>	30.875	24.110 +0.302	<b>1'49.271</b> 1'49.573	4	0.302
5	<b>99 I. CARRENO</b>	CHI	Yamaha YZF-R7	28.793	26.103 +0.024	30.938	24.011 +0.247	<b>1'49.845</b> 1'50.116	6	0.271
6	<b>52 J. HOWDEN</b>	RSA	Yamaha YZF-R7	29.077	25.946 +0.023	30.749	24.320	<b>1'50.092</b> 1'50.115	5	0.023
7	<b>36 B. NEILA</b>	ESP	Yamaha YZF-R7	29.237 +0.091	25.874	31.082	24.153	<b>1'50.346</b> 1'50.437	7	0.091
8	<b>28 D. ONGARO</b>	FRA	Yamaha YZF-R7	29.304 +0.217	25.940	31.094	24.598	<b>1'50.936</b> 1'51.153	8	0.217
9	<b>16 L. MICHEL</b>	GER	Yamaha YZF-R7	29.403 +0.006	26.230 +0.012	31.086 +0.092	24.395	<b>1'51.114</b> 1'51.224	9	0.110
10	<b>33 C. LIU</b>	TPE	Yamaha YZF-R7	29.068 +0.115	26.569	31.237 +0.121	24.424 +0.100	<b>1'51.298</b> 1'51.634	11	0.336
11	<b>46 P. RUIZ</b>	ESP	Yamaha YZF-R7	29.461 +0.004	26.220	31.621	24.237 +0.017	<b>1'51.539</b> 1'51.560	10	0.021
12	<b>10 R. YOCHAY</b>	ISR	Yamaha YZF-R7	29.760 +0.032	26.201 +0.011	31.231 +0.177	24.386	<b>1'51.578</b> 1'51.798	12	0.220
13	<b>35 L. KEMMER</b>	AUT	Yamaha YZF-R7	29.333	26.545 +0.060	31.438	24.504	<b>1'51.820</b> 1'51.880	13	0.060
14	<b>8 T. RELPH</b>	AUS	Yamaha YZF-R7	29.568	26.561 +0.137	31.333 +0.333	24.671 +0.234	<b>1'52.133</b> 1'52.837	16	0.704
15	<b>29 M. RUSTHEN</b>	NDR	Yamaha YZF-R7	29.756 +0.113	26.271	31.634 +0.168	24.617 +0.087	<b>1'52.278</b> 1'52.646	15	0.368
16	<b>21 N. VAN ASWEGEN</b>	RSA	Yamaha YZF-R7	29.745	26.532 +0.032	31.273	24.893	<b>1'52.443</b> 1'52.475	14	0.032
17	<b>14 M. DOBBS</b>	USA	Yamaha YZF-R7	29.990	26.265 +0.057	31.816	24.759 +0.139	<b>1'52.830</b> 1'53.026	18	0.196
18	<b>19 A. OUREDNIKOVA</b>	CZE	Yamaha YZF-R7	29.935 +0.014	26.730	31.310	25.036	<b>1'53.011</b> 1'53.025	17	0.014
19	<b>83 A. MADRIGAL</b>	MEX	Yamaha YZF-R7	29.959	26.583 +0.096	31.724 +0.294	24.921 +0.176	<b>1'53.187</b> 1'53.753	19	0.566
20	<b>94 B. BARBERA</b>	ITA	Yamaha YZF-R7	30.237 +0.224	26.456 +0.247	31.505	25.060 +0.076	<b>1'53.258</b> 1'53.805	21	0.547
21	<b>53 I. NADIEIEVA</b>	UKR	Yamaha YZF-R7	30.350	26.483 +0.106	31.589 +0.082	24.940 +0.204	<b>1'53.362</b> 1'53.754	20	0.392
22	<b>77 A. SIBAJA</b>	ESP	Yamaha YZF-R7	30.308 +0.118	26.621 +0.050	32.428 +0.033	25.080 +0.079	<b>1'54.437</b> 1'54.717	22	0.280
23	<b>44 L. HIRANO</b>	JPN	Yamaha YZF-R7	30.361 +0.105	27.117 +0.090	32.075	25.141 +0.076	<b>1'54.694</b> 1'54.965	23	0.271
24	<b>4 E. BONDI</b>	FRA	Yamaha YZF-R7	30.169 +0.078	27.056 +0.092	32.309	25.264 +0.096	<b>1'54.798</b> 1'55.064	24	0.266
25	<b>34 A. WHITMORE</b>	GBR	Yamaha YZF-R7	30.413 +0.100	26.891	32.461 +0.189	25.428	<b>1'55.193</b> 1'55.482	25	0.289
26	<b>5 K. SILFA</b>	DOM	Yamaha YZF-R7	31.210	27.847 +0.146	32.747 +0.106	25.749	<b>1'57.553</b> 1'57.805	26	0.252
<b>Overall Ideal Time</b>				28.656	25.536	30.540	23.913	<b>1'48.645</b>		

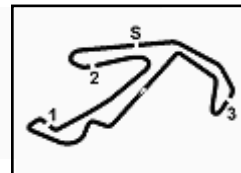
14/06/2024

These data/results cannot be reproduced, stored and/or transmitted in whole or in part by any manner of electronic, mechanical, photocopying, recording, broadcasting or otherwise now known or herein after developed without the previous express consent by the copyright owner, except for reproduction in daily press and regular printed publications on sale to the public within 60 days of the event related to those data/results and always provided that copyright symbol appears together as follows below.

© DORNA WSBK ORGANIZATION Srl 2024

FICR PERUGIA TIMING





Misano Circuit Sic 58 4.226 m

Pirelli Emilia-Romagna Round, 14-16 June 2024 Chronological Analysis Tissot Superpole

1 / 4

Table for 1st position: 6 M. HERRERA [1'49.390]. Columns: Lap, Seg1, Seg2, Seg3, Seg4, Lap Time, km/h, Local Time.

Table for 11th position: Lap 11 to 14 with timing data.

Table for 5th position: 52 J. HOWDEN [1'50.115]. Columns: Lap, Seg1, Seg2, Seg3, Seg4, Lap Time, km/h, Local Time.

Table for 2nd position: 64 S. SANCHEZ [1'49.441]. Columns: Lap, Seg1, Seg2, Seg3, Seg4, Lap Time, km/h, Local Time.

Table for 6th position: 99 I. CARREDO [1'50.116]. Columns: Lap, Seg1, Seg2, Seg3, Seg4, Lap Time, km/h, Local Time.

Table for 3rd position: 22 A. CARRASCO [1'49.514]. Columns: Lap, Seg1, Seg2, Seg3, Seg4, Lap Time, km/h, Local Time.

Table for 7th position: 36 B. NEILA [1'50.437]. Columns: Lap, Seg1, Seg2, Seg3, Seg4, Lap Time, km/h, Local Time.

Table for 4th position: 96 R. PONZIANI [1'49.573]. Columns: Lap, Seg1, Seg2, Seg3, Seg4, Lap Time, km/h, Local Time.

Table for 8th position: 28 D. ONGARO [1'51.153]. Columns: Lap, Seg1, Seg2, Seg3, Seg4, Lap Time, km/h, Local Time.

14/06/2024

P = Pits In/Dut - C = Lap Time Cancelled

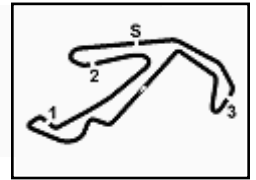
These data/results cannot be reproduced, stored and/or transmitted in whole or in part by any manner of electronic, mechanical, photocopying, recording, broadcasting or otherwise now known or herein after developed without the previous express consent by the copyright owner, except for reproduction in daily press and regular printed publications on sale to the public within 60 days of the event related to those data/results and always provided that copyright symbol appears together as follows below.

© DORNA WSBK ORGANIZATION Srl 2024









**Pirelli Emilia-Romagna Round, 14-16 June 2024**  
**Chronological Analysis Tissot Superpole**

13 30.582 27.117 33.469 25.351 1'56.519 180,9 13:50'27.290

24° 4 E. BONDI [1'55.064]							
Lap	Seg.1	Seg.2	Seg.3	Seg.4	Lap Time	km/h	Local Time
1		29.353	34.581	27.469		<b>184,0</b>	
2	31.663	28.401	33.787	40.303	2'14.154P	183,7	13:29'35.715
3	42.454	28.353	34.148	26.310	2'11.265P	181,2	13:31'46.980
4	31.384	28.279	34.011	26.368	2'00.042	181,2	13:33'47.022
5	31.002	27.943	33.451	25.940	1'58.336	183,4	13:35'45.358
6	30.554	27.973	33.695	25.904	1'58.126	182,1	13:37'43.484
7	30.715	27.423	33.052	25.595	1'56.785	182,1	13:39'40.269
8	30.718	27.609	33.007	25.722	1'57.056	181,2	13:41'37.325
9	30.448	27.234	33.150	25.554	1'56.386	181,5	13:43'33.711
10	<b>30.169</b>	27.354	33.090	25.929	1'56.542	180,9	13:45'30.253
11	30.651	27.578	32.780	25.786	1'56.795	181,2	13:47'27.048
12	30.247	27.148	<b>32.309</b>	25.360	<b>1'55.064</b>	182,7	13:49'22.112
13	30.339	<b>27.056</b>	32.476	<b>25.264</b>	1'55.135	183,1	13:51'17.247

25° 34 A. WHITMORE [1'55.482]							
Lap	Seg.1	Seg.2	Seg.3	Seg.4	Lap Time	km/h	Local Time
1		28.737	34.863	26.467		<b>184,9</b>	
2	31.227	27.754	32.719	26.209	1'57.909	184,6	13:29'19.187
3	31.563	27.872	32.548	25.541	1'57.524	<b>184,9</b>	13:31'16.711
4	31.831	27.088	32.639	25.752	1'57.310	184,6	13:33'14.021
5	30.794	28.902	32.882	26.280	1'58.858	183,7	13:35'12.879
6	31.209	28.108	32.839	1'50.605	3'22.761P	175,9	13:38'35.640
7	54.437	28.271	33.543	25.711	2'21.962P	184,3	13:40'57.602
8	30.494	27.157	32.638	25.545	1'55.834	183,7	13:42'53.436
9	<b>30.413</b>	27.400	32.732	25.814	1'56.359	180,9	13:44'49.795
10	30.573	27.810	<b>32.461</b>	25.638	1'56.482	181,8	13:46'46.277
11	34.123	27.517	32.746	25.637	2'00.023C	184,0	13:48'46.300
12	30.513	<b>26.891</b>	32.650	<b>25.428</b>	<b>1'55.482</b>	184,3	13:50'41.782

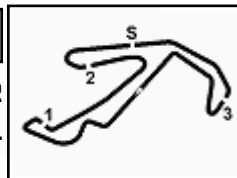
26° 5 K. SILFA [1'57.805]							
Lap	Seg.1	Seg.2	Seg.3	Seg.4	Lap Time	km/h	Local Time
1		28.608	34.058	26.516		184,3	
2	32.562	<b>27.847</b>	33.545	26.524	2'00.478	181,2	13:29'18.790
3	31.656	28.980	34.121	26.247	2'01.004	185,6	13:31'19.794
4	31.963	28.374	32.928	26.037	1'59.302	181,8	13:33'19.096
5	31.291	27.981	32.781	28.325	2'00.378	<b>186,9</b>	13:35'19.474
6	31.752	28.115	33.201	26.104	1'59.172	181,2	13:37'18.646
7	36.968	32.969	33.727	26.625	2'10.289	178,5	13:39'28.935
8	32.104	28.460	33.163	25.766	1'59.493	179,7	13:41'28.428
9	32.214	30.194	41.199	2'49.247	4'32.854P	115,6	13:46'01.282
10	50.456	28.213	<b>32.747</b>	26.117	2'17.533P	182,1	13:48'18.815
11	<b>31.210</b>	27.993	32.853	<b>25.749</b>	<b>1'57.805</b>	180,9	13:50'16.620

14/06/2024 P = Pits In/Out - C = Lap Time Cancelled

These data/results cannot be reproduced, stored and/or transmitted in whole or in part by any manner of electronic, mechanical, photocopying, recording, broadcasting or otherwise now known or herein after developed without the previous express consent by the copyright owner, except for reproduction in daily press and regular printed publications on sale to the public within 60 days of the event related to those data/results and always provided that copyright symbol appears together as follows below.

© DORNA WSBK ORGANIZATION Srl 2024





**Pirelli Emilia-Romagna Round, 14-16 June 2024**  
**Best Laps & Speeds**

Misano Circuit Sic 58 4.226 m

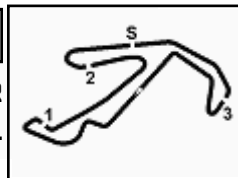
No.	Rider	Nat	Best Lap		FP		SP												
			LL	SPD	LL	SPD	LL	SPD											
1	<b>6 M. HERRERA</b> Yamaha YZF-R7	ESP	<b>1'49.390</b> 26 193,2		1'50.015 13 191,5		<b>1'49.390</b> 13 <b>193,2</b>												
2	<b>64 S. SANCHEZ</b> Yamaha YZF-R7	ESP	<b>1'49.441</b> 26 190,8		1'49.743 13 <b>190,8</b>		<b>1'49.441</b> 13 185,6												
3	<b>22 A. CARRASCO</b> Yamaha YZF-R7	ESP	<b>1'49.514</b> 24 191,5		1'50.335 12 <b>191,5</b>		<b>1'49.514</b> 12 191,2												
4	<b>96 R. PONZIANI</b> Yamaha YZF-R7	ITA	<b>1'49.573</b> 26 197,4		1'50.397 13 <b>197,4</b>		<b>1'49.573</b> 13 191,2												
5	<b>52 J. HOWDEN</b> Yamaha YZF-R7	RSA	<b>1'50.115</b> 24 193,2		1'51.438 12 <b>193,2</b>		<b>1'50.115</b> 12 191,8												
6	<b>99 I. CARRENO</b> Yamaha YZF-R7	CHI	<b>1'50.116</b> 24 191,5		1'52.785 13 190,1		<b>1'50.116</b> 11 <b>191,5</b>												
7	<b>36 B. NEILA</b> Yamaha YZF-R7	ESP	<b>1'50.437</b> 24 193,5		1'51.348 12 <b>193,5</b>		<b>1'50.437</b> 12 187,8												
8	<b>28 D. ONGARO</b> Yamaha YZF-R7	FRA	<b>1'51.153</b> 25 194,6		1'53.170 12 <b>194,6</b>		<b>1'51.153</b> 13 191,5												
9	<b>16 L. MICHEL</b> Yamaha YZF-R7	GER	<b>1'51.224</b> 26 195,7		1'52.415 13 194,2		<b>1'51.224</b> 13 <b>195,7</b>												
10	<b>46 P. RUIZ</b> Yamaha YZF-R7	ESP	<b>1'51.560</b> 23 187,8		1'52.036 11 187,5		<b>1'51.560</b> 12 <b>187,8</b>												
11	<b>33 C. LIU</b> Yamaha YZF-R7	TPE	<b>1'51.634</b> 24 190,8		1'52.254 12 <b>190,8</b>		<b>1'51.634</b> 12 185,9												
12	<b>10 R. YOCHAY</b> Yamaha YZF-R7	ISR	<b>1'51.798</b> 25 191,5		1'53.746 12 <b>191,5</b>		<b>1'51.798</b> 13 187,5												
13	<b>35 L. KEMMER</b> Yamaha YZF-R7	AUT	<b>1'51.880</b> 25 188,8		1'53.352 13 <b>188,8</b>		<b>1'51.880</b> 12 188,5												
14	<b>21 N. VAN ASWEGEN</b> Yamaha YZF-R7	RSA	<b>1'52.475</b> 24 193,9		1'54.652 12 191,5		<b>1'52.475</b> 12 <b>193,9</b>												
15	<b>29 M. RUSTHEN</b> Yamaha YZF-R7	NOR	<b>1'52.646</b> 24 193,5		1'53.742 11 <b>193,5</b>		<b>1'52.646</b> 13 189,8												
16	<b>8 T. RELPH</b> Yamaha YZF-R7	AUS	<b>1'52.837</b> 23 192,9		1'53.090 12 192,5		<b>1'52.837</b> 11 <b>192,9</b>												
17	<b>19 A. OUREDNIKOVA</b> Yamaha YZF-R7	CZE	<b>1'53.025</b> 24 192,5		1'53.884 11 <b>192,5</b>		<b>1'53.025</b> 13 189,5												
18	<b>14 M. DOBBS</b> Yamaha YZF-R7	USA	<b>1'53.026</b> 22 191,5		1'54.084 10 187,5		<b>1'53.026</b> 12 <b>191,5</b>												
19	<b>83 A. MADRIGAL</b> Yamaha YZF-R7	MEX	<b>1'53.753</b> 24 190,1		1'54.326 12 <b>190,1</b>		<b>1'53.753</b> 12 188,2												
20	<b>53 I. NADIEIEVA</b> Yamaha YZF-R7	UKR	<b>1'53.754</b> 23 190,1		1'55.214 12 <b>190,1</b>		<b>1'53.754</b> 11 188,5												
21	<b>94 B. BARBERA</b> Yamaha YZF-R7	ITA	<b>1'53.805</b> 24 195,3		1'54.876 13 191,2		<b>1'53.805</b> 11 <b>195,3</b>												
22	<b>77 A. SIBAJA</b> Yamaha YZF-R7	ESP	<b>1'54.717</b> 25 189,5		1'55.498 13 <b>189,5</b>		<b>1'54.717</b> 12 187,8												
23	<b>44 L. HIRANO</b> Yamaha YZF-R7	JPN	<b>1'54.965</b> 23 187,8		1'58.257 11 <b>187,8</b>		<b>1'54.965</b> 12 184,6												
24	<b>4 E. BONDI</b> Yamaha YZF-R7	FRA	<b>1'55.064</b> 25 188,8		1'57.160 13 <b>188,8</b>		<b>1'55.064</b> 12 184,0												
25	<b>34 A. WHITMORE</b> Yamaha YZF-R7	GBR	<b>1'55.482</b> 22 188,2		1'56.963 11 <b>188,2</b>		<b>1'55.482</b> 11 184,9												

14/06/2024

These data/results cannot be reproduced, stored and/or transmitted in whole or in part by any manner of electronic, mechanical, photocopying, recording, broadcasting or otherwise now known or herein after developed without the previous express consent by the copyright owner, except for reproduction in daily press and regular printed publications on sale to the public within 60 days of the event related to those data/results and always provided that copyright symbol appears together as follows below.

© DORNA WSBK ORGANIZATION Srl 2024





Misano Circuit Sic 58 4.226 m

**Pirelli Emilia-Romagna Round, 14-16 June 2024**  
**Best Laps & Speeds**

2 / 2

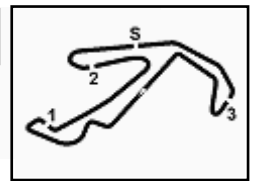
No.	Rider	Nat	Best Lap		FP		SP							
			LL	SPD	LL	SPD	LL	SPD						
26	<b>5 K. SILFA</b>	DOM	<b>1'56.533</b>		<b>1'56.533</b>		1'57.805							
	Yamaha YZF-R7		21	186,9	11	<b>186,9</b>	10	<b>186,9</b>						

14/06/2024

These data/results cannot be reproduced, stored and/or transmitted in whole or in part by any manner of electronic, mechanical, photocopying, recording, broadcasting or otherwise now known or herein after developed without the previous express consent by the copyright owner, except for reproduction in daily press and regular printed publications on sale to the public within 60 days of the event related to those data/results and always provided that copyright symbol appears together as follows below.

© DORNA WSBK ORGANIZATION Srl 2024

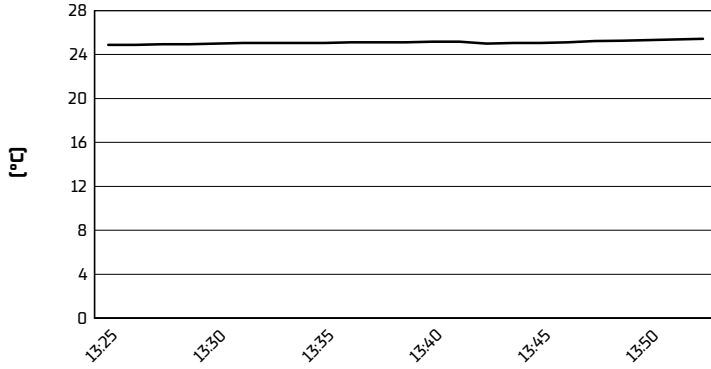




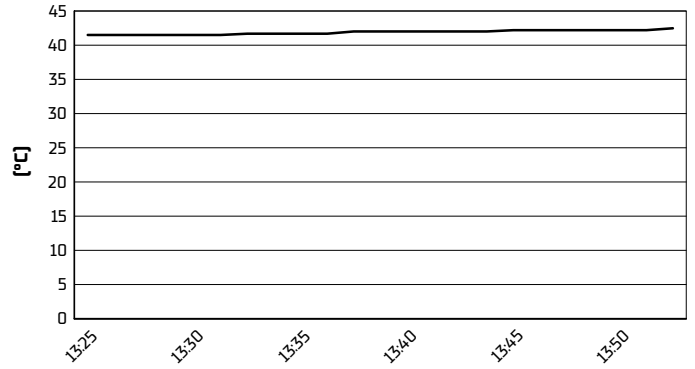
**Pirelli Emilia-Romagna Round, 14-16 June 2024**  
**Weather Report Tissot Superpole**  
 Session started 13:25 - Session ended 13:54

Misano Circuit Sic 58 4.226 m

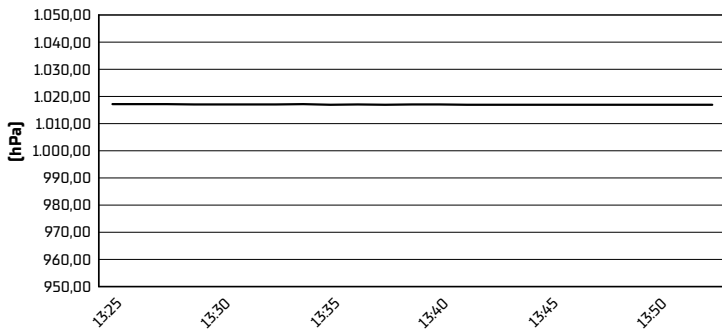
**Air Temperature**



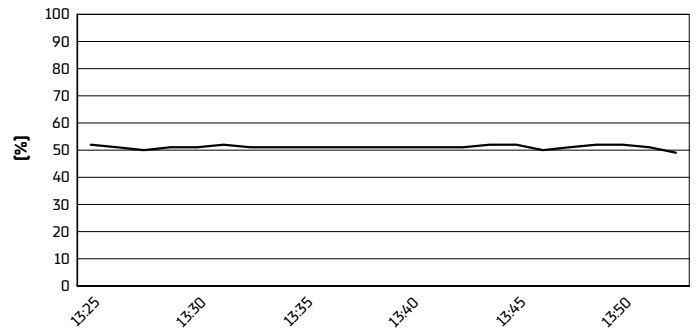
**Track Temperature**



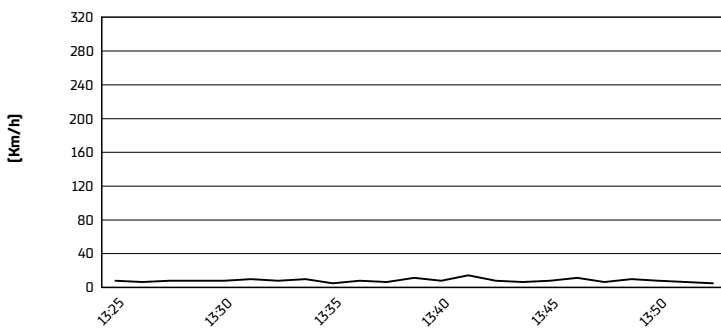
**Air Pressure**



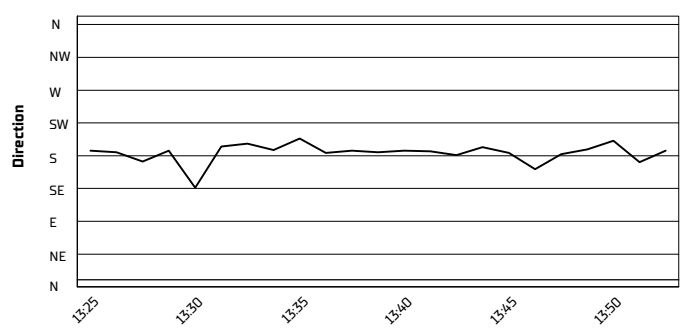
**Humidity**



**Wind Speed**



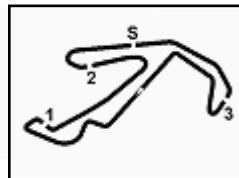
**Wind Direction**



14/06/2024

These data/results cannot be reproduced, stored and/or transmitted in whole or in part by any manner of electronic, mechanical, photocopying, recording, broadcasting or otherwise now known or herein after developed without the previous express consent by the copyright owner, except for reproduction in daily press and regular printed publications on sale to the public within 60 days of the event related to those data/results and always provided that copyright symbol appears together as follows below.

© DORNA WSBK ORGANIZATION Srl 2024



Misano Circuit Sic 58 4.226 m

**Pirelli Emilia-Romagna Round, 14-16 June 2024**  
**Tissot Superpole Ranking**

	2024
<b>01 Misano</b>	Herrera (Esp) Yam 1'49.390 (139,1 Km/h)
<b>02 Donington</b>	
<b>03 Portimao</b>	
<b>04 Cremona</b>	
<b>05 Estoril</b>	
<b>06 Jerez</b>	

**2024**

1 M. Herrera

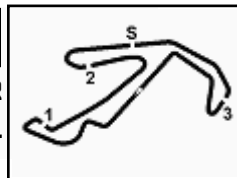
**ALL TIMES**

1 M. Herrera

14/06/2024

These data/results cannot be reproduced, stored and/or transmitted in whole or in part by any manner of electronic, mechanical, photocopying, recording, broadcasting or otherwise now known or herein after developed without the previous express consent by the copyright owner, except for reproduction in daily press and regular printed publications on sale to the public within 60 days of the event related to those data/results and always provided that copyright symbol appears together as follows below.

© DORNA WSBK ORGANIZATION Srl 2024



**Pirelli Emilia-Romagna Round, 14-16 June 2024**  
**Tissot Superpole Award**

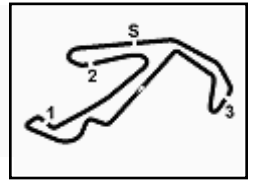
Misano Circuit Sic 58 4.226 m

	Points	Points From First	Points From Previous	June 16 <b>MISANO</b>	July 14 <b>DONINGTON PARK</b>	August 11 <b>PORTIMAO</b>	September 22 <b>CREMONA CIRCUIT</b>	October 13 <b>ESTORIL</b>	October 20 <b>JEREZ</b>									
1 <b>HERRERA</b> Maria (ESP)	12			12														
2 <b>SANCHEZ</b> Sara (ESP)	9	3		9														
3 <b>CARRASCO</b> Ana (ESP)	7	5	2	7														
4 <b>PONZIANI</b> Roberta (ITA)	6	6	1	6														
5 <b>HOWDEN</b> Jessica (RSA)	5	7	1	5														
6 <b>CARRENO</b> Isis (CHI)	4	8	1	4														
7 <b>NEILA</b> Beatriz (ESP)	3	9	1	3														
8 <b>ONGARO</b> Ornella (FRA)	2	10	1	2														
9 <b>MICHEL</b> Lucy (GER)	1	11	1	1														

14/06/2024 Odd points columns: Tissot Superpole Even points columns: Tissot Superpole Race

These data/results cannot be reproduced, stored and/or transmitted in whole or in part by any manner of electronic, mechanical, photocopying, recording, broadcasting or otherwise now known or herein after developed without the previous express consent by the copyright owner, except for reproduction in daily press and regular printed publications on sale to the public within 60 days of the event related to those data/results and always provided that copyright symbol appears together as follows below.

© DORNA WSBK ORGANIZATION Srl 2024



**Pirelli Emilia-Romagna Round, 14-16 June 2024**  
**Provisional Starting Grid - Race 1 (12 Laps x 4,226 km = 50,712 km)**

Misano Circuit Sic 58 4.226 m

1	1	6 HERRERA M. Yamaha 1'49.390	2	64 SANCHEZ S. Yamaha 1'49.441	3	22 CARRASCO A. Yamaha 1'49.514
2	4	96 PONZIANI R. Yamaha 1'49.573	5	52 HOWDEN J. Yamaha 1'50.115	6	99 CARRENO I. Yamaha 1'50.116
3	7	36 NEILA B. Yamaha 1'50.437	8	28 ONGARO O. Yamaha 1'51.153	9	16 MICHEL L. Yamaha 1'51.224
4	10	46 RUIZ P. Yamaha 1'51.560	11	33 LIU C. Yamaha 1'51.634	12	10 YOCHAY R. Yamaha 1'51.798
5	13	35 KEMMER L. Yamaha 1'51.880	14	21 VAN ASWEGEN N. Yamaha 1'52.475	15	29 RUSTHEN M. Yamaha 1'52.646
6	16	8 RELPH T. Yamaha 1'52.837	17	19 OUREDNIKOVA A. Yamaha 1'53.025	18	14 DOBBS M. Yamaha 1'53.026
7	19	83 MADRIGAL A. Yamaha 1'53.753	20	53 NADIEIEVA I. Yamaha 1'53.754	21	94 BARBERA B. Yamaha 1'53.805
8	22	77 SIBAJA A. Yamaha 1'54.717	23	44 HIRANO L. Yamaha 1'54.965	24	4 BONDI E. Yamaha 1'55.064
9	25	34 WHITMORE A. Yamaha 1'55.482	26	5 SILFA K. Yamaha 1'57.805		

14/06/2024 The Race Director .....

These data/results cannot be reproduced, stored and/or transmitted in whole or in part by any manner of electronic, mechanical, photocopying, recording, broadcasting or otherwise now known or herein after developed without the previous express consent by the copyright owner, except for reproduction in daily press and regular printed publications on sale to the public within 60 days of the event related to those data/results and always provided that copyright symbol appears together as follows below. © DORNA WSBK ORGANIZATION Srl 2024