

**Pirelli Portuguese Round, 27-29 March 2026**  
**Results Warm Up 2**

No.	Rider	Nat	Team	Bike	Time	Gap	Rel.	Laps	Speed	
									Avg	Max
1	<b>71 L. VENEMAN</b>	NED	MTM Kawasaki	Kawasaki ZX-6R 636	<b>1'49.775</b>			5	147,312	<b>223,4</b>
2	<b>6 J. BUIS</b>	NED	Track & Trades Wixx Racing	Suzuki GSX-8R	<b>1'49.843</b>	0.068	0.068	5	147,221	<b>232,5</b>
3	<b>55 H. DESSOY</b>	GBR	PHR Performance Triumph	Triumph Daytona 660	<b>1'49.939</b>	0.164	0.096	5	147,092	<b>237,1</b>
4	<b>91 M. VANNUCCI</b>	ITA	Revo-M2	Aprilia RS 660 Factory	<b>1'50.026</b>	0.251	0.087	5	146,976	<b>241,9</b>
5	<b>36 D. PONCET</b>	FRA	Rac41-Honda	Honda CBR600R	<b>1'50.075</b>	0.300	0.049	5	146,911	<b>229,6</b>
6	<b>23 E. BARTOLINI</b>	ITA	CM Triumph Factory Racing	Triumph Daytona 660	<b>1'50.353</b>	0.578	0.278	5	146,541	<b>232,5</b>
7	<b>77 J. OSUNA</b>	ESP	Deza-Box 77 Racing Team	Kawasaki ZX-6R 636	<b>1'50.573</b>	0.798	0.220	5	146,249	<b>230,6</b>
8	<b>16 A. FUERTES</b>	ESP	Deza-Box 77 Racing Team	Kawasaki ZX-6R 636	<b>1'50.724</b>	0.949	0.151	5	146,050	<b>227,6</b>
9	<b>33 G. SANCHEZ</b>	ESP	ARCO Yamaha MotoR University Team	Yamaha YZF-R7	<b>1'50.768</b>	0.993	0.044	5	145,992	<b>237,6</b>
10	<b>34 X. ARTIGAS</b>	ESP	MTM Kawasaki	Kawasaki ZX-6R 636	<b>1'50.784</b>	1.009	0.016	5	145,971	<b>221,1</b>
11	<b>40 J. CORREA</b>	USA	Pons Motosport Itალიკა Racing	Kawasaki ZX-6R 636	<b>1'50.796</b>	1.021	0.012	5	145,955	<b>228,1</b>
12	<b>38 D. SALVADOR</b>	ESP	Team ProDina Kawasaki XCI	Kawasaki ZX-6R 636	<b>1'50.859</b>	1.084	0.063	4	145,872	<b>224,3</b>
13	<b>65 F. FLEERACKERS</b>	BEL	Track & Trades Wixx Racing	Suzuki GSX-8R	<b>1'51.003</b>	1.228	0.144	5	145,683	<b>225,8</b>
14	<b>68 K. BEEKMANS</b>	NED	VLR Racing Team Suzuki	Suzuki GSX-8R	<b>1'51.068</b>	1.293	0.065	5	145,597	<b>228,6</b>
15	<b>50 C. THOMPSON</b>	AUS	Team BrCorse	Yamaha YZF-R7	<b>1'51.152</b>	1.377	0.084	5	145,487	<b>229,6</b>
16	<b>12 H. MAIER</b>	BRA	Yamaha AD78 FIMLA by MS Racing	Yamaha YZF-R7	<b>1'51.155</b>	1.380	0.003	5	145,483	<b>236,1</b>
17	<b>41 I. PERISTERAS</b>	GRE	MMR	Aprilia RS 660 Factory	<b>1'51.193</b>	1.418	0.038	5	145,434	
18	<b>47 A. TORRES</b>	ESP	Team ProDina Kawasaki XCI	Kawasaki ZX-6R 636	<b>1'51.244</b>	1.469	0.051	4	145,367	<b>226,7</b>
19	<b>43 M. GAGGI</b>	ITA	Team BrCorse	Yamaha YZF-R7	<b>1'51.271</b>	1.496	0.027	5	145,332	<b>230,1</b>
20	<b>11 M. SORRENTI</b>	ITA	Revo-M2	Aprilia RS 660 Factory	<b>1'51.275</b>	1.500	0.004	3	145,326	<b>232,5</b>
21	<b>66 P. TONN</b>	GER	Kove Racing Team 109	Kove 450RR	<b>1'51.520</b>	1.745	0.245	5	145,007	<b>228,6</b>
22	<b>98 T. BENETTI</b>	ITA	MMR	Aprilia RS 660 Factory	<b>1'51.618</b>	1.843	0.098	5	144,880	<b>230,6</b>
23	<b>27 F. MULYA</b>	INA	Progp Nitiracing	Yamaha YZF-R7	<b>1'51.766</b>	1.991	0.148	5	144,688	<b>231,5</b>
24	<b>7 B. FERNANDEZ</b>	ESP	Kove Racing Team 109	Kove 450RR	<b>1'51.777</b>	2.002	0.011	5	144,674	<b>228,6</b>
25	<b>89 T. AKSU</b>	AUS	PATA AG Motorsport Italia	Yamaha YZF-R7	<b>1'51.868</b>	2.093	0.091	5	144,556	<b>228,6</b>
26	<b>93 A. AGASKA</b>	INA	Progp Nitiracing	Yamaha YZF-R7	<b>1'51.918</b>	2.143	0.050	5	144,492	<b>232,5</b>
27	<b>21 T. SOVICKA</b>	CZE	Panattoni BGR Smrz Racing	Yamaha YZF-R7	<b>1'52.008</b>	2.233	0.090	5	144,375	<b>232,5</b>
28	<b>69 A. DI PERSIO</b>	ITA	ARCO Yamaha MotoR University Team	Yamaha YZF-R7	<b>1'52.238</b>	2.463	0.230	4	144,080	<b>225,8</b>
29	<b>18 B. IERACI</b>	ITA	CM Triumph Factory Racing	Triumph Daytona 660	<b>1'52.765</b>	2.990	0.527	3	143,406	<b>222,0</b>
30	<b>79 T. ALONSO</b>	PDR	Miguel Oliveira Team	Yamaha YZF-R7	<b>1'53.540</b>	3.765	0.775	5	142,427	<b>227,2</b>
31	<b>92 G. CAZARD</b>	FRA	Yamaha AD78 FIMLA by MS Racing	Yamaha YZF-R7	<b>1'53.928</b>	4.153	0.388	5	141,942	<b>224,3</b>
----- <b>Out 105% in this Session</b> -----										
32	<b>26 M. GENNAI</b>	ITA	Panattoni BGR Smrz Racing	Yamaha YZF-R7	<b>1'55.667</b>	5.892	1.739	3	139,808	<b>218,0</b>
33	<b>39 J. RISUENO</b>	ESP	Pons Motosport Itალიკა Racing	Kawasaki ZX-6R 636				0		<b>227,2</b>

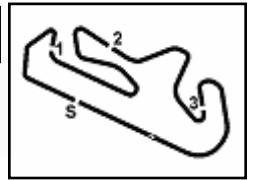
Qualifying Lap Time (105% of 1'49.775): 1'55.264

AIR	Humidity:	45%	Temp:	16°C
TRACK	Condition:	Dry	Temp:	19°C

Records	Pole	[SP]	2026	M.Vannucci	1'48.553	148,970	Km/h
	Race	[RC1]	2026	L.Veneman	1'48.894	148,500	Km/h
	All Times	[SP]	2026	M.Vannucci	1'48.553	148,970	Km/h

29/03/2026 Start 09:35 End 09:48 The results are provisional until the end of the time limit for protests and appeals and the completion of the technical checks. Clerk Of The Course: **Beatriz Aguas** Publication Time: **09:51**

These data/results cannot be reproduced, stored and/or transmitted in whole or in part by any manner of electronic, mechanical, photocopying, recording, broadcasting or otherwise now known or herein after developed without the previous express consent by the copyright owner, except for reproduction in daily press and regular printed publications on sale to the public within 60 days of the event related to those data/results and always provided that copyright symbol appears together as follows below.  
© DORNA WSBK ORGANIZATION Srl 2026



**Pirelli Portuguese Round, 27-29 March 2026**  
**Results Warm Up 2**

**Session Highlights**

Local Time	No. Rider	Description
09.35.00		Start of Session
09.35.27		Yellow Flag Out - Turn 5
09.35.29		Yellow Flag In - Turn 5
09.37.48		Yellow Flag Out - Turn 5-6
09.37.58	<b>39 J. RISUENO</b>	#39 Crashed - Turn 5
09.38.14		Yellow Flag In - Turn 5-6
09.38.15		Riders Under Yellow Flag at Turn 5-6: #27 #93 #79 #50 #66 #7 #98 #65 #6 #23 #36 #18
09.40.46	<b>77 J. OSUNA</b>	#77 MUST BRING RACELINK 218355 TO TIMING AFTER WARM UP
09.43.37		Yellow Flag Out - Turn 7
09.43.47	<b>11 M. SORRENTI</b>	#11 Crashed - Turn 7
09.44.23		Yellow Flag In - Turn 7
09.44.23		Riders Under Yellow Flag at Turn 7: #66 #27 #93 #65 #23 #7 #36 #6 #98 #92 #79 #38 #47 #69 #26
09.47.59	<b>41 I. PERISTERAS</b>	#41 Transponder NDT Working
09.48.39		End of Session

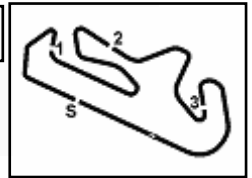
**Fastest Laps Sequence**

No.	Rider	Nat	Team	Bike	Local Time	Time	Gap	Avg
<b>71</b>	<b>L. VENEMAN</b>	NED	MTM Kawasaki	Kawasaki ZX-6R 636	09:38'50.435	<b>1'50.333</b>		146,567
<b>71</b>	<b>L. VENEMAN</b>	NED	MTM Kawasaki	Kawasaki ZX-6R 636	09:40'40.724	<b>1'50.289</b>	-0.044	146,626
<b>6</b>	<b>J. BUIS</b>	NED	Track & Trades Wixx Racing	Suzuki GSX-8R	09:42'56.612	<b>1'50.257</b>	-0.032	146,668
<b>36</b>	<b>D. PONCET</b>	FRA	Rac41-Honda	Honda CBR600R	09:42'59.300	<b>1'50.226</b>	-0.031	146,709
<b>91</b>	<b>M. VANNUCCI</b>	ITA	Revo-M2	Aprilia RS 660 Factory	09:44'35.078	<b>1'50.026</b>	-0.200	146,976
<b>71</b>	<b>L. VENEMAN</b>	NED	MTM Kawasaki	Kawasaki ZX-6R 636	09:46'12.982	<b>1'49.775</b>	-0.251	147,312

29/03/2026 Start 09:35 End 09:48 The results are provisional until the end of the time limit for protests and appeals and the completion of the technical checks. Clerk Of The Course: **Beatriz Aguas** Publication Time: **09:51**

These data/results cannot be reproduced, stored and/or transmitted in whole or in part by any manner of electronic, mechanical, photocopying, recording, broadcasting or otherwise now known or herein after developed without the previous express consent by the copyright owner, except for reproduction in daily press and regular printed publications on sale to the public within 60 days of the event related to those data/results and always provided that copyright symbol appears together as follows below.

© DORNA WSBK ORGANIZATION Srl 2026



Portimao 4.492 m

**Pirelli Portuguese Round, 27-29 March 2026**  
**Best Sectors & Speed Warm Up 2**

BEST LAP		
1	<b>71</b> L. VENEMAN	Kawasaki ZX-6R 636 1'49.775
2	<b>6</b> J. BUIS	Suzuki GSX-8R 1'49.843
3	<b>55</b> H. DESSOY	Triumph Daytona 660 1'49.939
4	<b>91</b> M. VANNUCCI	Aprilia RS 660 Factory 1'50.026
5	<b>36</b> D. PONCET	Honda CBR600R 1'50.075
6	<b>23</b> E. BARTOLINI	Triumph Daytona 660 1'50.353
7	<b>77</b> J. OSUNA	Kawasaki ZX-6R 636 1'50.573
8	<b>16</b> A. FUERTES	Kawasaki ZX-6R 636 1'50.724
9	<b>33</b> G. SANCHEZ	Yamaha YZF-R7 1'50.768
10	<b>34</b> X. ARTIGAS	Kawasaki ZX-6R 636 1'50.784
11	<b>40</b> J. CORREA	Kawasaki ZX-6R 636 1'50.796
12	<b>38</b> D. SALVADOR	Kawasaki ZX-6R 636 1'50.859
13	<b>65</b> F. FLEERACKERS	Suzuki GSX-8R 1'51.003
14	<b>68</b> K. BEEKMANS	Suzuki GSX-8R 1'51.068
15	<b>50</b> C. THOMPSON	Yamaha YZF-R7 1'51.152
16	<b>12</b> H. MAIER	Yamaha YZF-R7 1'51.155
17	<b>41</b> I. PERISTERAS	Aprilia RS 660 Factory 1'51.193
18	<b>47</b> A. TORRES	Kawasaki ZX-6R 636 1'51.244
19	<b>43</b> M. GAGGI	Yamaha YZF-R7 1'51.271
20	<b>11</b> M. SORRENTI	Aprilia RS 660 Factory 1'51.275
21	<b>66</b> P. TONN	Kove 450RR 1'51.520
22	<b>98</b> T. BENETTI	Aprilia RS 660 Factory 1'51.618
23	<b>27</b> F. MULYA	Yamaha YZF-R7 1'51.766
24	<b>7</b> B. FERNANDEZ	Kove 450RR 1'51.777
25	<b>89</b> T. AKSU	Yamaha YZF-R7 1'51.868
26	<b>93</b> A. AGASKA	Yamaha YZF-R7 1'51.918
27	<b>21</b> T. SOVICKA	Yamaha YZF-R7 1'52.008
28	<b>69</b> A. DI PERSIO	Yamaha YZF-R7 1'52.238
29	<b>18</b> B. IERACI	Triumph Daytona 660 1'52.765
30	<b>79</b> T. ALONSO	Yamaha YZF-R7 1'53.540
31	<b>92</b> G. CAZARD	Yamaha YZF-R7 1'53.928
32	<b>26</b> M. GENNAI	Yamaha YZF-R7 1'55.667
33	<b>39</b> J. RISUENO	Kawasaki ZX-6R 636

SPEED		
1	<b>91</b> M. VANNUCCI	Aprilia RS 660 Factory 241,9
2	<b>33</b> G. SANCHEZ	Yamaha YZF-R7 237,6
3	<b>55</b> H. DESSOY	Triumph Daytona 660 237,1
4	<b>12</b> H. MAIER	Yamaha YZF-R7 236,1
5	<b>6</b> J. BUIS	Suzuki GSX-8R 232,5
6	<b>23</b> E. BARTOLINI	Triumph Daytona 660 232,5
7	<b>21</b> T. SOVICKA	Yamaha YZF-R7 232,5
8	<b>11</b> M. SORRENTI	Aprilia RS 660 Factory 232,5
9	<b>93</b> A. AGASKA	Yamaha YZF-R7 232,5
10	<b>27</b> F. MULYA	Yamaha YZF-R7 231,5
11	<b>77</b> J. OSUNA	Kawasaki ZX-6R 636 230,6
12	<b>98</b> T. BENETTI	Aprilia RS 660 Factory 230,6
13	<b>43</b> M. GAGGI	Yamaha YZF-R7 230,1
14	<b>36</b> D. PONCET	Honda CBR600R 229,6
15	<b>50</b> C. THOMPSON	Yamaha YZF-R7 229,6
16	<b>89</b> T. AKSU	Yamaha YZF-R7 228,6
17	<b>66</b> P. TONN	Kove 450RR 228,6
18	<b>7</b> B. FERNANDEZ	Kove 450RR 228,6
19	<b>68</b> K. BEEKMANS	Suzuki GSX-8R 228,6
20	<b>40</b> J. CORREA	Kawasaki ZX-6R 636 228,1
21	<b>16</b> A. FUERTES	Kawasaki ZX-6R 636 227,6
22	<b>39</b> J. RISUENO	Kawasaki ZX-6R 636 227,2
23	<b>79</b> T. ALONSO	Yamaha YZF-R7 227,2
24	<b>47</b> A. TORRES	Kawasaki ZX-6R 636 226,7
25	<b>65</b> F. FLEERACKERS	Suzuki GSX-8R 225,8
26	<b>69</b> A. DI PERSIO	Yamaha YZF-R7 225,8
27	<b>92</b> G. CAZARD	Yamaha YZF-R7 224,3
28	<b>38</b> D. SALVADOR	Kawasaki ZX-6R 636 224,3
29	<b>71</b> L. VENEMAN	Kawasaki ZX-6R 636 223,4
30	<b>18</b> B. IERACI	Triumph Daytona 660 222,0
31	<b>34</b> X. ARTIGAS	Kawasaki ZX-6R 636 221,1
32	<b>26</b> M. GENNAI	Yamaha YZF-R7 218,0

SEG. 1	
1	<b>91</b> M. VANNUCCI 23.794
2	<b>6</b> J. BUIS 23.809
3	<b>71</b> L. VENEMAN 23.850
4	<b>12</b> H. MAIER 23.874
5	<b>36</b> D. PONCET 23.890
6	<b>33</b> G. SANCHEZ 23.903
7	<b>77</b> J. OSUNA 23.957
8	<b>55</b> H. DESSOY 23.965
9	<b>23</b> E. BARTOLINI 24.000
10	<b>16</b> A. FUERTES 24.104
11	<b>40</b> J. CORREA 24.118
12	<b>65</b> F. FLEERACKERS 24.121
13	<b>7</b> B. FERNANDEZ 24.128
14	<b>47</b> A. TORRES 24.147
15	<b>34</b> X. ARTIGAS 24.162
16	<b>50</b> C. THOMPSON 24.165
17	<b>38</b> D. SALVADOR 24.178
18	<b>11</b> M. SORRENTI 24.211
19	<b>66</b> P. TONN 24.223
20	<b>43</b> M. GAGGI 24.270
21	<b>27</b> F. MULYA 24.272
22	<b>93</b> A. AGASKA 24.297
23	<b>98</b> T. BENETTI 24.302
24	<b>89</b> T. AKSU 24.332
25	<b>39</b> J. RISUENO 24.350
26	<b>68</b> K. BEEKMANS 24.369
27	<b>18</b> B. IERACI 24.421
28	<b>21</b> T. SOVICKA 24.424
29	<b>79</b> T. ALONSO 24.463
30	<b>69</b> A. DI PERSIO 24.531
31	<b>92</b> G. CAZARD 24.711
32	<b>26</b> M. GENNAI 24.904

SEG. 2	
1	<b>36</b> D. PONCET 34.790
2	<b>6</b> J. BUIS 34.797
3	<b>55</b> H. DESSOY 34.811
4	<b>91</b> M. VANNUCCI 34.833
5	<b>71</b> L. VENEMAN 34.862
6	<b>47</b> A. TORRES 34.887
7	<b>38</b> D. SALVADOR 34.931
8	<b>40</b> J. CORREA 34.947
9	<b>34</b> X. ARTIGAS 34.953
10	<b>68</b> K. BEEKMANS 34.970
11	<b>16</b> A. FUERTES 34.970
12	<b>33</b> G. SANCHEZ 34.997
13	<b>77</b> J. OSUNA 35.013
14	<b>23</b> E. BARTOLINI 35.026
15	<b>65</b> F. FLEERACKERS 35.028
16	<b>43</b> M. GAGGI 35.049
17	<b>98</b> T. BENETTI 35.092
18	<b>50</b> C. THOMPSON 35.207
19	<b>11</b> M. SORRENTI 35.247
20	<b>69</b> A. DI PERSIO 35.292
21	<b>93</b> A. AGASKA 35.295
22	<b>66</b> P. TONN 35.299
23	<b>7</b> B. FERNANDEZ 35.317
24	<b>21</b> T. SOVICKA 35.349
25	<b>27</b> F. MULYA 35.383
26	<b>12</b> H. MAIER 35.387
27	<b>89</b> T. AKSU 35.431
28	<b>92</b> G. CAZARD 35.591
29	<b>79</b> T. ALONSO 36.021
30	<b>18</b> B. IERACI 36.081
31	<b>41</b> I. PERISTERAS 36.379
32	<b>39</b> J. RISUENO 36.657
33	<b>26</b> M. GENNAI 36.907

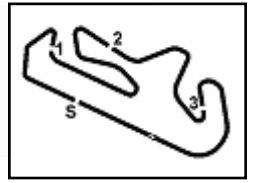
SEG. 3	
1	<b>6</b> J. BUIS 26.388
2	<b>71</b> L. VENEMAN 26.432
3	<b>36</b> D. PONCET 26.478
4	<b>23</b> E. BARTOLINI 26.510
5	<b>16</b> A. FUERTES 26.525
6	<b>68</b> K. BEEKMANS 26.584
7	<b>55</b> H. DESSOY 26.594
8	<b>65</b> F. FLEERACKERS 26.600
9	<b>34</b> X. ARTIGAS 26.606
10	<b>38</b> D. SALVADOR 26.642
11	<b>77</b> J. OSUNA 26.652
12	<b>91</b> M. VANNUCCI 26.685
13	<b>50</b> C. THOMPSON 26.703
14	<b>98</b> T. BENETTI 26.716
15	<b>40</b> J. CORREA 26.755
16	<b>33</b> G. SANCHEZ 26.812
17	<b>66</b> P. TONN 26.829
18	<b>43</b> M. GAGGI 26.838
19	<b>11</b> M. SORRENTI 26.888
20	<b>12</b> H. MAIER 26.891
21	<b>89</b> T. AKSU 26.923
22	<b>27</b> F. MULYA 26.960
23	<b>47</b> A. TORRES 26.978
24	<b>7</b> B. FERNANDEZ 26.980
25	<b>69</b> A. DI PERSIO 27.011
26	<b>18</b> B. IERACI 27.024
27	<b>21</b> T. SOVICKA 27.055
28	<b>93</b> A. AGASKA 27.167
29	<b>26</b> M. GENNAI 27.304
30	<b>79</b> T. ALONSO 27.318
31	<b>39</b> J. RISUENO 27.350
32	<b>92</b> G. CAZARD 27.359

SEG. 4	
1	<b>55</b> H. DESSOY 24.463
2	<b>16</b> A. FUERTES 24.607
3	<b>71</b> L. VENEMAN 24.631
4	<b>6</b> J. BUIS 24.675
5	<b>33</b> G. SANCHEZ 24.700
6	<b>91</b> M. VANNUCCI 24.714
7	<b>43</b> M. GAGGI 24.721
8	<b>40</b> J. CORREA 24.736
9	<b>21</b> T. SOVICKA 24.747
10	<b>12</b> H. MAIER 24.783
11	<b>23</b> E. BARTOLINI 24.783
12	<b>11</b> M. SORRENTI 24.799
13	<b>36</b> D. PONCET 24.835
14	<b>50</b> C. THOMPSON 24.841
15	<b>77</b> J. OSUNA 24.855
16	<b>68</b> K. BEEKMANS 24.925
17	<b>89</b> T. AKSU 24.964
18	<b>65</b> F. FLEERACKERS 24.980
19	<b>69</b> A. DI PERSIO 24.999
20	<b>93</b> A. AGASKA 25.001
21	<b>34</b> X. ARTIGAS 25.002
22	<b>47</b> A. TORRES 25.044
23	<b>27</b> F. MULYA 25.049
24	<b>66</b> P. TONN 25.058
25	<b>38</b> D. SALVADOR 25.061
26	<b>39</b> J. RISUENO 25.129
27	<b>7</b> B. FERNANDEZ 25.130
28	<b>18</b> B. IERACI 25.239
29	<b>98</b> T. BENETTI 25.394
30	<b>26</b> M. GENNAI 25.527
31	<b>92</b> G. CAZARD 25.601
32	<b>79</b> T. ALONSO 25.738

29/03/2026

These data/results cannot be reproduced, stored and/or transmitted in whole or in part by any manner of electronic, mechanical, photocopying, recording, broadcasting or otherwise now known or herein after developed without the previous express consent by the copyright owner, except for reproduction in daily press and regular printed publications on sale to the public within 60 days of the event related to those data/results and always provided that copyright symbol appears together as follows below.

© DORNA WSBK ORGANIZATION Srl 2026

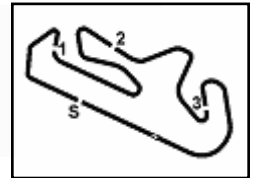


Portimao 4.492 m

**Pirelli Portuguese Round, 27-29 March 2026**  
**Ideal Times Warm Up 2**

No.	Rider	Nat	Bike	Seg. 1 Diff. 1	Seg. 2 Diff. 2	Seg. 3 Diff. 3	Seg. 4 Diff. 4	Ideal Time Best Lap	Pos.	Diff.	
1	<b>6 J. BUIS</b>	NED	Suzuki GSX-8R	23.809 +0.174	34.797	<b>26.388</b>	24.675	<b>1'49.669</b> 1'49.843	2	0.174	
2	<b>71 L. VENEMAN</b>	NED	Kawasaki ZX-6R 636	23.850	34.862	26.432	24.631	<b>1'49.775</b> 1'49.775	1		
3	<b>55 H. DESOY</b>	GBR	Triumph Daytona 660	23.965	34.811	26.594	<b>24.463</b> +0.106	<b>1'49.833</b> 1'49.939	3	0.106	
4	<b>36 D. PONCET</b>	FRA	Honda CBR600R	23.890	<b>34.790</b>	26.478	24.835 +0.082	<b>1'49.993</b> 1'50.075	5	0.082	
5	<b>91 M. VANNUCCI</b>	ITA	Aprilia RS 660 Factory	<b>23.794</b>	34.833	26.685	24.714	<b>1'50.026</b> 1'50.026	4		
6	<b>16 A. FUERTES</b>	ESP	Kawasaki ZX-6R 636	24.104 +0.037	34.970 +0.222	26.525	24.607 +0.259	<b>1'50.206</b> 1'50.724	8	0.518	
7	<b>23 E. BARTOLINI</b>	ITA	Triumph Daytona 660	24.000 +0.034	35.026	26.510	24.783	<b>1'50.319</b> 1'50.353	6	0.034	
8	<b>33 G. SANCHEZ</b>	ESP	Yamaha YZF-R7	23.903 +0.271	34.997	26.812	24.700 +0.085	<b>1'50.412</b> 1'50.768	9	0.356	
9	<b>77 J. OSUNA</b>	ESP	Kawasaki ZX-6R 636	23.957	35.013 +0.096	26.652	24.855	<b>1'50.477</b> 1'50.573	7	0.096	
10	<b>40 J. CORREA</b>	USA	Kawasaki ZX-6R 636	24.118 +0.155	34.947	26.755 +0.085	24.736	<b>1'50.556</b> 1'50.796	11	0.240	
11	<b>34 X. ARTIGAS</b>	ESP	Kawasaki ZX-6R 636	24.162 +0.016	34.953	26.606 +0.045	25.002	<b>1'50.723</b> 1'50.784	10	0.061	
12	<b>65 F. FLEERACKERS</b>	BEL	Suzuki GSX-8R	24.121 +0.274	35.028	26.600	24.980	<b>1'50.729</b> 1'51.003	13	0.274	
13	<b>38 D. SALVADOR</b>	ESP	Kawasaki ZX-6R 636	24.178	34.931	26.642	25.061 +0.047	<b>1'50.812</b> 1'50.859	12	0.047	
14	<b>68 K. BEEKMANS</b>	NED	Suzuki GSX-8R	24.369 +0.108	34.970 +0.072	26.584	24.925 +0.040	<b>1'50.848</b> 1'51.068	14	0.220	
15	<b>43 M. GAGGI</b>	ITA	Yamaha YZF-R7	24.270 +0.227	35.049 +0.166	26.838	24.721	<b>1'50.878</b> 1'51.271	19	0.393	
16	<b>50 C. THOMPSON</b>	AUS	Yamaha YZF-R7	24.165 +0.134	35.207 +0.102	26.703	24.841	<b>1'50.916</b> 1'51.152	15	0.236	
17	<b>12 H. MAIER</b>	BRA	Yamaha YZF-R7	23.874 +0.051	35.387 +0.040	26.891	24.783 +0.129	<b>1'50.935</b> 1'51.155	16	0.220	
18	<b>47 A. TORRES</b>	ESP	Kawasaki ZX-6R 636	24.147 +0.090	34.887	26.978	25.044 +0.098	<b>1'51.056</b> 1'51.244	18	0.188	
19	<b>11 M. SORRENTI</b>	ITA	Aprilia RS 660 Factory	24.211 +0.130	35.247	26.888	24.799	<b>1'51.145</b> 1'51.275	20	0.130	
20	<b>66 P. TONN</b>	GER	Kove 450RR	24.223	35.299	26.829 +0.111	25.058	<b>1'51.409</b> 1'51.520	21	0.111	
21	<b>98 T. BENETTI</b>	ITA	Aprilia RS 660 Factory	24.302	35.092	26.716 +0.114	25.394	<b>1'51.504</b> 1'51.618	22	0.114	
22	<b>7 B. FERNANDEZ</b>	ESP	Kove 450RR	24.128 +0.222	35.317	26.980	25.130	<b>1'51.555</b> 1'51.777	24	0.222	
23	<b>21 T. SOVICKA</b>	CZE	Yamaha YZF-R7	24.424 +0.285	35.349	27.055 +0.001	24.747 +0.147	<b>1'51.575</b> 1'52.008	27	0.433	
24	<b>89 T. AKSU</b>	AUS	Yamaha YZF-R7	24.332 +0.142	35.431	26.923	24.964 +0.076	<b>1'51.650</b> 1'51.868	25	0.218	
25	<b>27 F. MULYA</b>	INA	Yamaha YZF-R7	24.272	35.383 +0.102	26.960	25.049	<b>1'51.664</b> 1'51.766	23	0.102	
26	<b>93 A. AGASKA</b>	INA	Yamaha YZF-R7	24.297 +0.012	35.295	27.167 +0.116	25.001 +0.030	<b>1'51.760</b> 1'51.918	26	0.158	
27	<b>69 A. DI PERSIO</b>	ITA	Yamaha YZF-R7	24.531	35.292	27.011 +0.405	24.999	<b>1'51.833</b> 1'52.238	28	0.405	
28	<b>18 B. IERACI</b>	ITA	Triumph Daytona 660	24.421	36.081	27.024	25.239	<b>1'52.765</b> 1'52.765	29		
29	<b>92 G. CAZARD</b>	FRA	Yamaha YZF-R7	24.711 +0.424	35.591 +0.242	27.359	25.601	<b>1'53.262</b> 1'53.928	31	0.666	
30	<b>79 T. ALONSO</b>	POR	Yamaha YZF-R7	24.463	36.021	27.318	25.738	<b>1'53.540</b> 1'53.540	30		
31	<b>26 M. GENNAI</b>	ITA	Yamaha YZF-R7	24.904 +0.711	36.907 +0.314	27.304	25.527	<b>1'54.642</b> 1'55.667	32	1.025	
	<b>39 J. RISUENO</b>	ESP	Kawasaki ZX-6R 636								
	<b>41 I. PERISTERAS</b>	GRE	Aprilia RS 660 Factory								
				One or more sectors missing					1'51.193		
	<b>Overall Ideal Time</b>			23.794	34.790	26.388	24.463	<b>1'49.435</b>			

29/03/2026  
These data/results cannot be reproduced, stored and/or transmitted in whole or in part by any manner of electronic, mechanical, photocopying, recording, broadcasting or otherwise now known or herein after developed without the previous express consent by the copyright owner, except for reproduction in daily press and regular printed publications on sale to the public within 60 days of the event related to those data/results and always provided that copyright symbol appears together as follows below.  
© DORNA WSBK ORGANIZATION Srl 2026



**Pirelli Portuguese Round, 27-29 March 2026**  
**Chronological Analysis Warm Up 2**

1° 71 L. VENEMAN [1'49.775]							
Lap	Seg1	Seg2	Seg3	Seg4	Lap Time	km/h	Local Time
		35.962	26.921	25.010			9:37'00.102
1	24.133	34.874	26.604	24.722	1'50.333	220,2	9:38'50.435
2	24.017	34.921	26.622	24.729	1'50.289	221,1	9:40'40.724
3	23.872	35.282	26.692	24.863	1'50.709	222,5	9:42'31.433
4	23.922	36.061	26.883	24.908	1'51.774	<b>223,4</b>	9:44'23.207
5	<b>23.850</b>	<b>34.862</b>	<b>26.432</b>	<b>24.631</b>	<b>1'49.775</b>	222,5	9:46'12.982

2° 6 J. BUIS [1'49.843]							
Lap	Seg1	Seg2	Seg3	Seg4	Lap Time	km/h	Local Time
		36.151	26.993	25.046			9:37'22.351
1	24.352	35.842	27.191	24.959	1'52.344C	223,4	9:39'14.695
2	24.216	35.280	27.319	24.845	1'51.660	227,6	9:41'06.355
3	<b>23.809</b>	34.922	26.448	25.078	1'50.257	232,0	9:42'56.612
4	24.419	37.597	27.198	25.062	1'54.276C	221,6	9:44'50.888
5	23.983	<b>34.797</b>	<b>26.388</b>	<b>24.675</b>	<b>1'49.843</b>	<b>232,5</b>	9:46'40.731

3° 55 H. DESSOY [1'49.939]							
Lap	Seg1	Seg2	Seg3	Seg4	Lap Time	km/h	Local Time
		38.301	30.029	24.886			9:37'11.898
1	24.137	35.467	27.112	24.782	1'51.498	234,5	9:39'03.396
2	24.165	35.133	26.625	24.985	1'50.908	<b>237,1</b>	9:40'54.304
3	24.131	34.906	26.781	24.707	1'50.525	230,6	9:42'44.829
4	24.278	35.143	27.347	<b>24.463</b>	1'51.231	230,6	9:44'36.060
5	<b>23.965</b>	<b>34.811</b>	<b>26.594</b>	24.569	<b>1'49.939</b>	231,0	9:46'25.999

4° 91 M. VANNUCCI [1'50.026]							
Lap	Seg1	Seg2	Seg3	Seg4	Lap Time	km/h	Local Time
		36.216	27.266	25.212			9:37'11.377
1	24.286	35.610	26.989	24.779	1'51.664	232,0	9:39'03.041
2	24.178	35.057	26.791	24.962	1'50.988	232,0	9:40'54.029
3	24.284	34.939	27.019	24.781	1'51.023	228,6	9:42'45.052
4	<b>23.794</b>	<b>34.833</b>	<b>26.685</b>	<b>24.714</b>	<b>1'50.026</b>	<b>241,9</b>	9:44'35.078
5	23.938	34.934	26.854	24.884	1'50.610	229,1	9:46'25.688

5° 36 D. PONCET [1'50.075]							
Lap	Seg1	Seg2	Seg3	Seg4	Lap Time	km/h	Local Time
		35.898	27.156	25.098			9:37'25.084
1	24.410	35.062	26.718	24.840	1'51.030C	226,7	9:39'16.114
2	23.939	37.508	26.678	<b>24.835</b>	1'52.960	<b>229,6</b>	9:41'09.074
3	23.938	34.824	26.593	24.871	1'50.226	228,6	9:42'59.300
4	23.951	35.315	27.042	25.078	1'51.386C	227,6	9:44'50.686
5	<b>23.890</b>	<b>34.790</b>	<b>26.478</b>	24.917	<b>1'50.075</b>	226,7	9:46'40.761

6° 23 E. BARTOLINI [1'50.353]							
Lap	Seg1	Seg2	Seg3	Seg4	Lap Time	km/h	Local Time
		35.867	27.145	24.942			9:37'22.640
1	24.261	35.890	27.281	24.891	1'52.323C	228,1	9:39'14.963
2	24.081	35.097	27.760	25.157	1'52.095	231,0	9:41'07.058
3	24.034	<b>35.026</b>	<b>26.510</b>	<b>24.783</b>	<b>1'50.353</b>	227,6	9:42'57.411
4	<b>24.000</b>	35.796	28.180	25.646	1'53.622C	228,1	9:44'51.033
5	24.258	35.209	26.744	25.158	1'51.369	<b>232,5</b>	9:46'42.402

7° 77 J. OSUNA [1'50.573]							
Lap	Seg1	Seg2	Seg3	Seg4	Lap Time	km/h	Local Time
		37.184	27.997	25.097			9:37'10.353
1	24.272	35.351	27.089	25.447	1'52.159	225,3	9:39'02.512
2	24.352	35.564	26.717	25.175	1'51.808	220,7	9:40'54.320
3	24.258	<b>35.013</b>	26.781	24.969	1'51.021	<b>230,6</b>	9:42'45.341
4	<b>23.957</b>	35.109	<b>26.652</b>	<b>24.855</b>	<b>1'50.573</b>	230,1	9:44'35.914
5	24.374	35.205	26.742	24.883	1'51.204	224,8	9:46'27.118

8° 16 A. FUERTES [1'50.724]							
Lap	Seg1	Seg2	Seg3	Seg4	Lap Time	km/h	Local Time
		35.617	26.872	28.031			9:37'05.892
1	24.519	35.685	26.922	24.944	1'52.070	223,0	9:38'57.962
2	24.297	34.982	26.811	24.879	1'50.969	221,6	9:40'48.931
3	<b>24.104</b>	35.065	27.717	28.740	1'55.626	223,0	9:42'44.557
4	24.385	<b>34.970</b>	27.430	<b>24.607</b>	1'51.392	223,9	9:44'35.949
5	24.141	35.192	<b>26.525</b>	24.866	<b>1'50.724</b>	<b>227,6</b>	9:46'26.673

9° 33 G. SANCHEZ [1'50.768]							
Lap	Seg1	Seg2	Seg3	Seg4	Lap Time	km/h	Local Time
		37.010	27.234	25.193			9:37'09.058
1	<b>23.903</b>	35.343	26.977	24.884	1'51.107	233,0	9:39'00.165
2	23.997	35.255	26.854	<b>24.700</b>	1'50.806	230,6	9:40'50.971
3	24.197	35.483	26.958	25.651	1'52.289	<b>237,6</b>	9:42'43.260
4	24.081	35.347	27.154	25.266	1'51.848	230,6	9:44'35.108
5	24.174	<b>34.997</b>	<b>26.812</b>	24.785	<b>1'50.768</b>	229,6	9:46'25.876

10° 34 X. ARTIGAS [1'50.784]							
Lap	Seg1	Seg2	Seg3	Seg4	Lap Time	km/h	Local Time
		35.891	26.868	25.048			9:37'00.696
1	24.178	<b>34.953</b>	26.651	<b>25.002</b>	<b>1'50.784</b>	<b>221,1</b>	9:38'51.480
2	24.244	35.048	<b>26.606</b>	25.066	1'50.964	220,7	9:40'42.444
3	<b>24.162</b>	35.109	26.800	25.163	1'51.234	220,7	9:42'33.678
4	24.223	34.986	26.666	25.067	1'50.942	<b>221,1</b>	9:44'24.620
5	24.172	35.102	26.976	25.387	1'51.637	220,7	9:46'16.257

11° 40 J. CORREA [1'50.796]							
Lap	Seg1	Seg2	Seg3	Seg4	Lap Time	km/h	Local Time
		36.642	27.086	25.265			9:37'02.899
1	24.420	35.378	<b>26.755</b>	25.133	1'51.686	223,9	9:38'54.585
2	24.445	36.337	29.320	25.018	1'55.120	222,5	9:40'49.705
3	24.130	35.112	27.080	26.289	1'52.611	<b>228,1</b>	9:42'42.316
4	24.273	<b>34.947</b>	26.840	<b>24.736</b>	<b>1'50.796</b>	225,3	9:44'33.112
5	<b>24.118</b>	35.278	27.085	24.958	1'51.439	225,3	9:46'24.551

12° 38 D. SALVADOR [1'50.859]							
Lap	Seg1	Seg2	Seg3	Seg4	Lap Time	km/h	Local Time
		35.819	27.600	25.489			9:37'42.309
1	24.323	35.417	26.753	26.048	1'52.541	222,5	9:39'34.850
2	<b>24.178</b>	<b>34.931</b>	<b>26.642</b>	25.108	<b>1'50.859</b>	<b>224,3</b>	9:41'25.709
3	24.279	34.941	26.762	<b>25.061</b>	1'51.043	220,2	9:43'16.752
4	24.227	35.529	28.322	27.133	1'55.211C	220,7	9:45'11.963

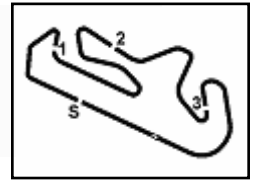
13° 65 F. FLEERACKERS [1'51.003]							
Lap	Seg1	Seg2	Seg3	Seg4	Lap Time	km/h	Local Time
		36.201	26.974	25.118			9:37'22.198
1	24.322	35.811	27.099	25.135	1'52.367C	224,3	9:39'14.565
2	24.147	35.204	27.084	25.064	1'51.499	<b>225,8</b>	9:41'06.064
3	24.395	<b>35.028</b>	<b>26.600</b>	<b>24.980</b>	<b>1'51.003</b>	223,0	9:42'57.067
4	<b>24.121</b>	35.429	26.813	25.112	1'51.475C	<b>225,8</b>	9:44'48.542
5	24.263	35.269	26.650	25.004	1'51.186	223,9	9:46'39.728

14° 68 K. BEEKMANS [1'51.068]							
Lap	Seg1	Seg2	Seg3	Seg4	Lap Time	km/h	Local Time
		36.102	27.048	25.264			9:37'05.450
1	24.876	35.263	26.761	24.997	1'51.897	<b>228,6</b>	9:38'57.347
2	24.477	35.042	<b>26.584</b>	24.965	<b>1'51.068</b>	220,7	9:40'48.415
3	<b>24.369</b>	<b>34.970</b>	28.556	25.600	1'53.495	222,0	9:42'41.910
4	24.382	35.049	26.777	24.988	1'51.196	221,6	9:44'33.106
5	24.441	35.111	27.128	<b>24.925</b>	1'51.605	227,2	9:46'24.711

29/03/2026 P = Pits In/Out - C = Lap Time Cancelled

These data/results cannot be reproduced, stored and/or transmitted in whole or in part by any manner of electronic, mechanical, photocopying, recording, broadcasting or otherwise now known or herein after developed without the previous express consent by the copyright owner, except for reproduction in daily press and regular printed publications on sale to the public within 60 days of the event related to those data/results and always provided that copyright symbol appears together as follows below.

© DORNA WSBK ORGANIZATION Srl 2026



**Pirelli Portuguese Round, 27-29 March 2026**  
**Chronological Analysis Warm Up 2**

15° 50 C. THOMPSON [1'51.152]								22° 98 T. BENETTI [1'51.618]							
Lap	Seg.1	Seg.2	Seg.3	Seg.4	Lap Time	km/h	Local Time	Lap	Seg.1	Seg.2	Seg.3	Seg.4	Lap Time	km/h	Local Time
		36.255	27.189	25.264			9:37'15.136			39.287	27.938	26.127			9:37'20.375
1	24.430	35.390	27.033	25.190	1'52.043C	<b>229,6</b>	9:39'07.179	1	25.371	36.171	27.394	25.314	1'54.250C	219,8	9:39'14.625
2	24.244	35.251	26.961	25.182	1'51.638	227,6	9:40'58.817	2	24.772	35.401	26.920	25.498	1'52.591	219,8	9:41'07.216
3	24.299	35.309	<b>26.703</b>	<b>24.841</b>	<b>1'51.152</b>	225,8	9:42'49.969	3	24.404	35.409	<b>26.716</b>	25.716	1'52.245	224,3	9:42'59.461
4	<b>24.165</b>	<b>35.207</b>	26.872	25.023	1'51.267	229,1	9:44'41.236	4	24.495	35.206	26.906	25.373	1'51.980C	223,0	9:44'51.441
5	24.429	36.002	27.174	25.116	1'52.721	223,9	9:46'33.957	5	<b>24.302</b>	<b>35.092</b>	26.830	<b>25.394</b>	<b>1'51.618</b>	<b>230,6</b>	9:46'43.059

16° 12 H. MAIER [1'51.155]								23° 27 F. MULYA [1'51.766]							
Lap	Seg.1	Seg.2	Seg.3	Seg.4	Lap Time	km/h	Local Time	Lap	Seg.1	Seg.2	Seg.3	Seg.4	Lap Time	km/h	Local Time
		37.049	27.667	25.151			9:37'10.581			36.486	27.393	25.345			9:37'12.980
1	24.392	35.986	27.904	24.892	1'53.174	232,0	9:39'03.755	1	24.707	35.689	27.349	24.943	1'52.688C	<b>231,5</b>	9:39'05.668
2	24.393	35.421	27.016	<b>24.783</b>	1'51.613	226,2	9:40'55.368	2	<b>24.272</b>	35.485	<b>26.960</b>	<b>25.049</b>	<b>1'51.766</b>	231,0	9:40'57.434
3	23.925	35.427	<b>26.891</b>	24.912	<b>1'51.155</b>	230,6	9:42'46.523	3	24.314	<b>35.383</b>	27.001	25.204	1'51.902	228,6	9:42'49.336
4	<b>23.874</b>	<b>35.387</b>	27.018	25.127	1'51.406	<b>236,1</b>	9:44'37.929	4	25.436	36.738	27.263	25.119	1'54.556C	229,1	9:44'43.892
5	24.102	36.138	28.135	25.495	1'53.870	226,2	9:46'31.799	5	24.442	35.754	27.398	25.356	1'52.950	226,2	9:46'36.842

17° 41 I. PERISTERAS [1'51.193]								24° 7 B. FERNANDEZ [1'51.777]							
Lap	Seg.1	Seg.2	Seg.3	Seg.4	Lap Time	km/h	Local Time	Lap	Seg.1	Seg.2	Seg.3	Seg.4	Lap Time	km/h	Local Time
		<b>36.379</b>					9:37'11.671			36.731	27.530	25.664			9:37'20.452
1					1'51.524		9:39'03.195	1	24.620	36.006	27.359	25.341	1'53.326C	222,5	9:39'13.778
2					1'52.018		9:40'55.213	2	24.420	35.635	27.270	25.230	1'52.555	223,9	9:41'06.333
3					<b>1'51.193</b>		9:42'46.406	3	24.350	<b>35.317</b>	<b>26.980</b>	<b>25.130</b>	<b>1'51.777</b>	<b>228,6</b>	9:42'58.110
4					1'51.436		9:44'37.842	4	<b>24.128</b>	35.705	27.357	25.311	1'52.501C	221,6	9:44'50.611
5					1'54.477		9:46'32.319	5	25.195	36.448	27.114	25.219	1'53.976	225,3	9:46'44.587

18° 47 A. TORRES [1'51.244]								25° 89 T. AKSU [1'51.868]							
Lap	Seg.1	Seg.2	Seg.3	Seg.4	Lap Time	km/h	Local Time	Lap	Seg.1	Seg.2	Seg.3	Seg.4	Lap Time	km/h	Local Time
		36.217	27.226	25.311			9:37'41.058			36.816	27.700	25.247			9:37'11.683
1	24.405	35.721	27.284	25.682	1'53.092	222,5	9:39'34.150	1	24.594	35.585	27.302	25.197	1'52.678	225,3	9:39'04.361
2	<b>24.147</b>	35.108	28.850	<b>25.044</b>	1'53.149	<b>226,7</b>	9:41'27.299	2	24.474	<b>35.431</b>	<b>26.923</b>	25.040	<b>1'51.868</b>	<b>228,6</b>	9:40'56.229
3	24.237	<b>34.887</b>	<b>26.978</b>	25.142	<b>1'51.244</b>	224,3	9:43'18.543	3	24.611	35.480	27.144	25.341	1'52.576	220,7	9:42'48.805
4	24.555	35.260	27.229	25.130	1'52.174C	226,2	9:45'10.717	4	24.878	35.919	30.084	32.140	2'03.021	218,9	9:44'51.826
								5	<b>24.332</b>	35.782	27.737	<b>24.964</b>	1'52.815	226,2	9:46'44.641

19° 43 M. GAGGI [1'51.271]								26° 93 A. AGASKA [1'51.918]							
Lap	Seg.1	Seg.2	Seg.3	Seg.4	Lap Time	km/h	Local Time	Lap	Seg.1	Seg.2	Seg.3	Seg.4	Lap Time	km/h	Local Time
		36.292	27.292	25.395			9:37'08.941			36.743	27.533	25.293			9:37'14.280
1	24.418	35.505	27.408	26.824	1'54.155	224,3	9:39'03.096	1	24.393	35.547	28.943	25.177	1'54.060C	<b>232,5</b>	9:39'08.340
2	24.825	35.492	26.920	24.957	1'52.194	228,1	9:40'55.290	2	<b>24.297</b>	35.536	27.237	<b>25.001</b>	1'52.071	230,1	9:41'00.411
3	24.497	35.215	<b>26.838</b>	<b>24.721</b>	<b>1'51.271</b>	228,1	9:42'46.561	3	24.309	<b>35.295</b>	27.283	25.031	<b>1'51.918</b>	231,0	9:42'52.329
4	24.361	<b>35.049</b>	27.047	25.964	1'52.421	<b>230,1</b>	9:44'38.982	4	24.391	35.434	27.283	25.200	1'52.308C	226,2	9:44'44.637
5	<b>24.270</b>	35.285	27.579	28.656	1'55.790	226,7	9:46'34.772	5	24.553	35.646	<b>27.167</b>	25.178	1'52.544	224,3	9:46'37.181

20° 11 M. SORRENTI [1'51.275]								27° 21 T. SOVICKA [1'52.008]							
Lap	Seg.1	Seg.2	Seg.3	Seg.4	Lap Time	km/h	Local Time	Lap	Seg.1	Seg.2	Seg.3	Seg.4	Lap Time	km/h	Local Time
		35.984	27.202	25.387			9:37'07.595			36.040	27.595	25.492			9:37'05.245
1	24.371	35.575	26.946	24.979	1'51.871	227,2	9:38'59.466	1	24.970	35.711	27.277	25.064	1'53.022	226,2	9:38'58.267
2	24.341	<b>35.247</b>	<b>26.888</b>	<b>24.799</b>	<b>1'51.275</b>	227,2	9:40'50.741	2	24.580	35.534	<b>27.055</b>	24.923	1'52.092	230,1	9:40'50.359
3	<b>24.211</b>	35.287	26.979	26.406	1'52.883	<b>232,5</b>	9:42'43.624	3	24.709	<b>35.349</b>	27.056	24.894	<b>1'52.008</b>	226,2	9:42'42.367
4	27.030					231,5		4	24.666	35.404	27.174	25.806	1'53.050	225,3	9:44'35.417
								5	<b>24.424</b>	35.554	27.379	<b>24.747</b>	1'52.104	<b>232,5</b>	9:46'27.521

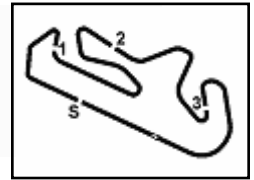
21° 66 P. TONN [1'51.520]								28° 69 A. DI PERSIO [1'52.238]							
Lap	Seg.1	Seg.2	Seg.3	Seg.4	Lap Time	km/h	Local Time	Lap	Seg.1	Seg.2	Seg.3	Seg.4	Lap Time	km/h	Local Time
		36.738	28.560	25.467			9:37'15.706			37.003	27.896	26.094			9:37'39.149
1	24.497	35.366	27.011	25.216	1'52.090C	223,9	9:39'07.796	1	25.024	36.411	27.751	25.670	1'54.856	220,7	9:39'34.005
2	24.336	35.785	<b>26.829</b>	25.189	1'52.139	227,2	9:40'59.935	2	24.707	35.628	<b>27.011</b>	25.005	1'52.351	223,0	9:41'26.356
3	<b>24.223</b>	<b>35.299</b>	26.940	<b>25.058</b>	<b>1'51.520</b>	<b>228,6</b>	9:42'51.455	3	<b>24.531</b>	<b>35.292</b>	27.416	<b>24.999</b>	<b>1'52.238</b>	224,3	9:43'18.594
4	24.256	35.370	26.931	25.248	1'51.805C	224,3	9:44'43.260	4	24.704	35.420	27.245	25.179	1'52.548C	<b>225,8</b>	9:45'11.142
5	26.469	36.769	27.360	25.385	1'55.983	218,0	9:46'39.243								

29/03/2026

P = Pits In/Out - C = Lap Time Cancelled

These data/results cannot be reproduced, stored and/or transmitted in whole or in part by any manner of electronic, mechanical, photocopying, recording, broadcasting or otherwise now known or herein after developed without the previous express consent by the copyright owner, except for reproduction in daily press and regular printed publications on sale to the public within 60 days of the event related to those data/results and always provided that copyright symbol appears together as follows below.

© DORNA WSBK ORGANIZATION Srl 2026



**Pirelli Portuguese Round, 27-29 March 2026**  
**Chronological Analysis Warm Up 2**

<b>29° 18 B. IERACI [1'52.765]</b>							
Lap	Seg.1	Seg.2	Seg.3	Seg.4	Lap Time	km/h	Local Time
		36.517	27.165	25.462			9:37'27.184
1	24.462	35.544	26.959	25.316	1'52.281C	<b>222,0</b>	9:39'19.465
2	<b>24.421</b>	<b>36.081</b>	<b>27.024</b>	<b>25.239</b>	<b>1'52.765</b>	221,6	9:41'12.230
3	24.709	36.371	28.952	48.471	2'18.503P	216,3	9:43'30.733

<b>30° 79 T. ALONSO [1'53.540]</b>							
Lap	Seg.1	Seg.2	Seg.3	Seg.4	Lap Time	km/h	Local Time
		37.453	27.528	25.928			9:37'14.012
1	24.848	36.010	27.572	25.785	1'54.215C	225,8	9:39'08.227
2	24.582	36.220	29.784	28.907	1'59.493	<b>227,2</b>	9:41'07.720
3	<b>24.463</b>	<b>36.021</b>	<b>27.318</b>	<b>25.738</b>	<b>1'53.540</b>	225,8	9:43'01.260
4	24.808	37.012	27.551	25.780	1'55.151C	219,4	9:44'56.411
5	24.966	40.016	34.307	48.349	2'27.638P	217,6	9:47'24.049

<b>31° 92 G. CAZARD [1'53.928]</b>							
Lap	Seg.1	Seg.2	Seg.3	Seg.4	Lap Time	km/h	Local Time
		37.557	27.757	25.981			9:37'11.625
1	25.135	35.833	<b>27.359</b>	<b>25.601</b>	<b>1'53.928</b>	221,6	9:39'05.553
2	24.949	35.795	27.555	25.664	1'53.963	<b>224,3</b>	9:40'59.516
3	24.770	<b>35.591</b>	28.637	33.430	2'02.428	<b>224,3</b>	9:43'01.944
4	<b>24.711</b>	36.111	27.466	25.698	1'53.986C	223,4	9:44'55.930
5	24.979	35.900	27.474	25.724	1'54.077	220,2	9:46'50.007

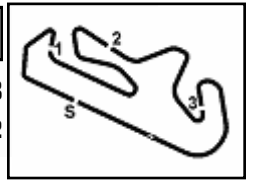
<b>32° 26 M. GENNAI [1'55.667]</b>							
Lap	Seg.1	Seg.2	Seg.3	Seg.4	Lap Time	km/h	Local Time
		<b>36.907</b>	27.587	25.528			9:37'06.764
1	25.615	37.221	<b>27.304</b>	<b>25.527</b>	<b>1'55.667</b>	205,2	9:39'02.431
2	<b>24.904</b>	37.238	29.300	45.674	2'17.116P	<b>218,0</b>	9:41'19.547
3	2'22.792	37.051	27.602	25.161	3'52.606CP		9:45'12.153

<b>33° 39 J. RISUENO</b>							
Lap	Seg.1	Seg.2	Seg.3	Seg.4	Lap Time	km/h	Local Time
		<b>36.657</b>	<b>27.350</b>	<b>25.129</b>			9:37'09.816
1	<b>24.350</b>					<b>227,2</b>	

29/03/2026 P = Pits In/Out - C = Lap Time Cancelled

These data/results cannot be reproduced, stored and/or transmitted in whole or in part by any manner of electronic, mechanical, photocopying, recording, broadcasting or otherwise now known or herein after developed without the previous express consent by the copyright owner, except for reproduction in daily press and regular printed publications on sale to the public within 60 days of the event related to those data/results and always provided that copyright symbol appears together as follows below.

© DORNA WSBK ORGANIZATION Srl 2026



Portimao 4.492 m

**Pirelli Portuguese Round, 27-29 March 2026**  
**Best Laps & Speeds**

1 / 2

No.	Rider Bike	Nat	Best Lap		FP		SP		WUP1		RC1								
			LL	SPD	LL	SPD	LL	SPD	LL	SPD	LL	SPD							LL
1	<b>91 M. VANNUCCI</b> Aprilia RS 660 Factory	ITA	<b>1'48.553</b> 37 248,0		1'49.395 12 244,1		<b>1'48.553</b> 10 246,8		1'49.171 5 247,4		1'50.142 10 <b>248,0</b>								
2	<b>65 F. FLEERACKERS</b> Suzuki GSX-8R	BEL	<b>1'48.563</b> 36 245,7		1'48.823 12 <b>245,7</b>		<b>1'48.563</b> 9 238,7		1'50.019 5 244,1		1'49.242 10 <b>245,7</b>								
3	<b>38 D. SALVADOR</b> Kawasaki ZX-6R 636	ESP	<b>1'48.759</b> 36 244,6		1'49.312 10 235,6		<b>1'48.759</b> 11 240,3		1'49.154 5 238,2		1'49.367 10 <b>244,6</b>								
4	<b>68 K. BEEKMANS</b> Suzuki GSX-8R	NED	<b>1'48.785</b> 28 243,5		1'49.546 9 <b>243,5</b>		<b>1'48.785</b> 9 241,3		1'49.231 5 242,4		5								
5	<b>6 J. BUIS</b> Suzuki GSX-8R	NED	<b>1'48.842</b> 36 244,6		1'48.980 12 <b>244,6</b>		<b>1'48.842</b> 9 242,4		1'49.336 5 <b>244,6</b>		1'49.621 10 241,9								
6	<b>71 L. VENEMAN</b> Kawasaki ZX-6R 636	NED	<b>1'48.867</b> 36 249,7		1'48.901 11 236,6		<b>1'48.867</b> 10 238,7		1'49.300 5 239,7		1'48.894 10 <b>249,7</b>								
7	<b>18 B. IERACI</b> Triumph Daytona 660	ITA	<b>1'49.068</b> 31 244,6		1'49.797 6 234,0		<b>1'49.068</b> 10 237,1		1'49.453 5 240,3		1'49.684 10 <b>244,6</b>								
8	<b>47 A. TORRES</b> Kawasaki ZX-6R 636	ESP	<b>1'49.077</b> 34 248,5		1'49.414 10 240,3		1'49.457 9 238,7		1'49.083 5 238,2		<b>1'49.077</b> 10 <b>248,5</b>								
9	<b>36 D. PONCET</b> Honda CBR600R	FRA	<b>1'49.150</b> 31 254,4		1'49.748 9 238,2		<b>1'49.150</b> 8 237,6		1'50.037 4 236,1		1'49.570 10 <b>254,4</b>								
10	<b>73 F. SEABRIGHT</b> Triumph Daytona 660	GBR	<b>1'49.166</b> 25 238,7		1'50.148 7 232,0		<b>1'49.166</b> 9 235,6		1'49.487 4 <b>238,7</b>		5								
11	<b>16 A. FUERTES</b> Kawasaki ZX-6R 636	ESP	<b>1'49.339</b> 35 250,3		1'49.523 10 244,1		1'49.477 10 240,3		1'49.869 5 239,2		<b>1'49.339</b> 10 <b>250,3</b>								
12	<b>34 X. ARTIGAS</b> Kawasaki ZX-6R 636	ESP	<b>1'49.402</b> 33 243,0		1'49.433 8 236,1		1'49.465 10 233,0		<b>1'49.402</b> 5 <b>243,0</b>		1'49.677 10 241,3								
13	<b>50 C. THOMPSON</b> Yamaha YZF-R7	AUS	<b>1'49.444</b> 34 244,6		1'50.034 9 <b>244,6</b>		<b>1'49.444</b> 10 244,1		1'49.508 5 240,8		1'50.113 10 242,4								
14	<b>43 M. GAGGI</b> Yamaha YZF-R7	ITA	<b>1'49.481</b> 35 245,7		1'50.268 10 241,9		<b>1'49.481</b> 10 241,9		1'50.228 5 244,1		1'49.941 10 <b>245,7</b>								
15	<b>23 E. BARTOLINI</b> Triumph Daytona 660	ITA	<b>1'49.496</b> 32 250,8		1'49.546 8 241,9		1'49.510 9 241,3		<b>1'49.496</b> 5 239,7		1'49.684 10 <b>250,8</b>								
16	<b>41 I. PERISTERAS</b> Aprilia RS 660 Factory	GRE	<b>1'49.553</b> 33 250,3		1'50.302 9 246,8		<b>1'49.553</b> 9 246,3		1'50.208 5 <b>250,3</b>		1'50.509 10 248,0								
17	<b>33 G. SANCHEZ</b> Yamaha YZF-R7	ESP	<b>1'49.635</b> 22 245,7		1'49.755 10 243,0		<b>1'49.635</b> 10 239,2		1'50.791 1 <b>245,7</b>		1								
18	<b>98 T. BENETTI</b> Aprilia RS 660 Factory	ITA	<b>1'49.640</b> 33 246,3		1'49.821 12 <b>246,3</b>		<b>1'49.640</b> 13 238,7		1'51.246 4 235,1		4								
19	<b>11 M. SORRENTI</b> Aprilia RS 660 Factory	ITA	<b>1'49.744</b> 34 246,3		1'50.035 11 243,0		<b>1'49.744</b> 8 243,0		1'50.089 5 243,5		1'50.183 10 <b>246,3</b>								
20	<b>39 J. RISUENO</b> Kawasaki ZX-6R 636	ESP	<b>1'49.745</b> 36 245,7		1'50.581 10 233,0		<b>1'49.745</b> 11 232,5		1'50.791 5 236,1		1'49.969 10 <b>245,7</b>								
21	<b>77 J. OSUNA</b> Kawasaki ZX-6R 636	ESP	<b>1'49.762</b> 28 240,8		1'50.602 9 235,1		1'50.355 10 235,6		<b>1'49.762</b> 5 <b>240,8</b>		4								
22	<b>12 H. MAIER</b> Yamaha YZF-R7	BRA	<b>1'49.791</b> 32 250,8		1'51.008 10 235,6		1'49.916 9 243,0		1'51.297 3 239,2		<b>1'49.791</b> 10 <b>250,8</b>								
23	<b>7 B. FERNANDEZ</b> Kove 450RR	ESP	<b>1'49.795</b> 36 246,3		1'51.334 12 235,6		<b>1'49.795</b> 9 <b>246,3</b>		1'51.889 5 236,6		1'49.970 10 <b>246,3</b>								
24	<b>69 A. DI PERSIO</b> Yamaha YZF-R7	ITA	<b>1'49.843</b> 29 249,1		1'50.534 8 240,8		<b>1'49.843</b> 10 240,8		1		1'49.992 10 <b>249,1</b>								
25	<b>55 H. DESSOY</b> Triumph Daytona 660	GBR	<b>1'49.865</b> 29 235,6		<b>1'49.865</b> 11 <b>235,6</b>		1'49.890 9 232,5		1'50.720 5 235,1		4								

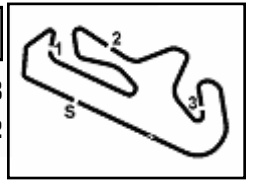
29/03/2026

These data/results cannot be reproduced, stored and/or transmitted in whole or in part by any manner of electronic, mechanical, photocopying, recording, broadcasting or otherwise now known or herein after developed without the previous express consent by the copyright owner, except for reproduction in daily press and regular printed publications on sale to the public within 60 days of the event related to those data/results and always provided that copyright symbol appears together as follows below.

© DORNA WSBK ORGANIZATION Srl 2026

FICR PERUGIA TIMING





Portimao 4.492 m

2 / 2

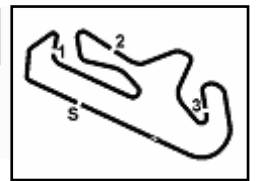
**Pirelli Portuguese Round, 27-29 March 2026**  
**Best Laps & Speeds**

No.	Rider Bike	Nat	Best Lap		FP		SP		WUP1		RC1							
			LL	SPD	LL	SPD	LL	SPD	LL	SPD	LL	SPD						LL
26	<b>26 M. GENNAI</b> Yamaha YZF-R7	ITA	<b>1'49.933</b>		1'50.398		1'50.071		1'51.099		<b>1'49.933</b>							
			35	245,7	10	243,5	10	236,1	5	238,2	10	<b>245,7</b>						
27	<b>89 T. AKSU</b> Yamaha YZF-R7	AUS	<b>1'50.041</b>		1'51.304		1'50.883		1'52.045		<b>1'50.041</b>							
			33	250,8	10	243,0	9	239,2	4	230,6	10	<b>250,8</b>						
28	<b>40 J. CORREA</b> Kawasaki ZX-6R 636	USA	<b>1'50.349</b>		<b>1'50.349</b>		1'50.767		1'50.596		1'50.357							
			35	246,3	11	236,1	10	232,0	4	235,6	10	<b>246,3</b>						
29	<b>93 A. AGASKA</b> Yamaha YZF-R7	INA	<b>1'50.644</b>		1'51.052		<b>1'50.644</b>		1'51.388		1'51.526							
			32	246,3	8	243,0	9	235,1	5	240,8	10	<b>246,3</b>						
30	<b>21 T. SOVICKA</b> Yamaha YZF-R7	CZE	<b>1'50.782</b>		1'52.306		1'51.947		<b>1'50.782</b>									
			27	245,2	10	237,6	8	233,0	5	<b>245,2</b>	4							
31	<b>27 F. MULYA</b> Yamaha YZF-R7	INA	<b>1'51.044</b>		1'51.768		1'52.743		<b>1'51.044</b>									
			21	244,1	7	<b>244,1</b>	5	231,0	5	241,3	4							
32	<b>92 G. CAZARD</b> Yamaha YZF-R7	FRA	<b>1'51.192</b>		1'52.672		1'51.427		1'52.094		<b>1'51.192</b>							
			27	247,4	3	230,1	9	236,1	5	239,2	10	<b>247,4</b>						
33	<b>66 P. TONN</b> Kove 450RR	GER	<b>1'51.203</b>		1'51.587		1'52.137		1'51.710		<b>1'51.203</b>							
			28	245,7	12	236,6	2	233,0	4	238,7	10	<b>245,7</b>						
34	<b>79 T. ALONSO</b> Yamaha YZF-R7	POR	<b>1'51.251</b>		1'53.153		1'52.760		1'51.791		<b>1'51.251</b>							
			33	246,3	8	239,7	10	230,6	5	235,1	10	<b>246,3</b>						

29/03/2026

These data/results cannot be reproduced, stored and/or transmitted in whole or in part by any manner of electronic, mechanical, photocopying, recording, broadcasting or otherwise now known or herein after developed without the previous express consent by the copyright owner, except for reproduction in daily press and regular printed publications on sale to the public within 60 days of the event related to those data/results and always provided that copyright symbol appears together as follows below.

© DORNA WSBK ORGANIZATION Srl 2026



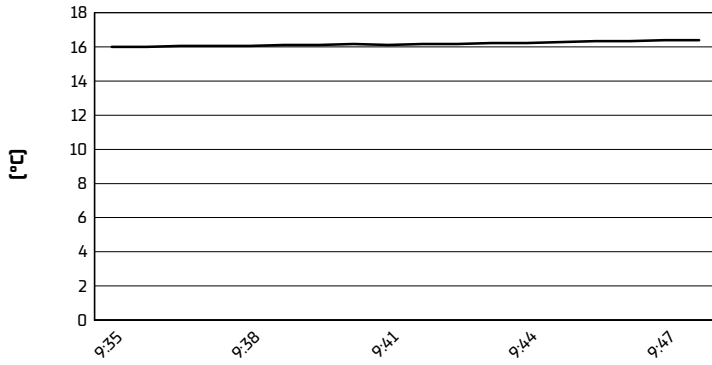
Portimao 4.492 m

**Pirelli Portuguese Round, 27-29 March 2026**

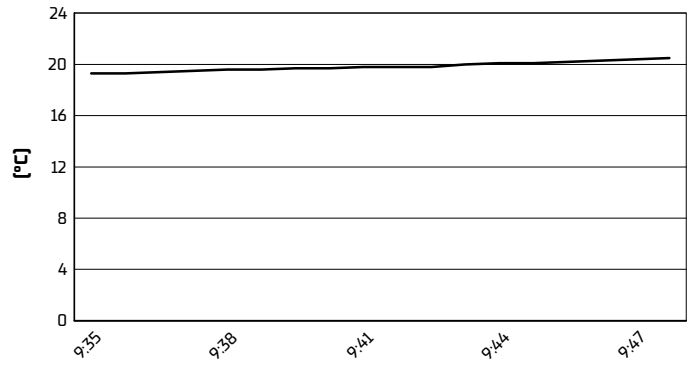
**Weather Report Warm Up 2**

Session started 09:35 - Session ended 9:48

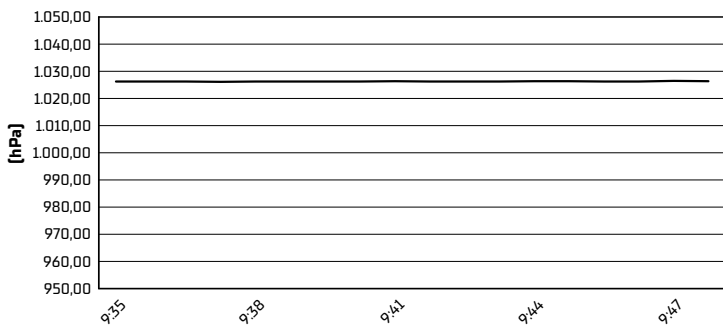
**Air Temperature**



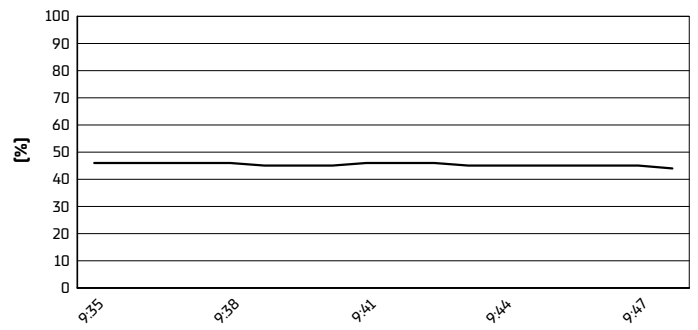
**Track Temperature**



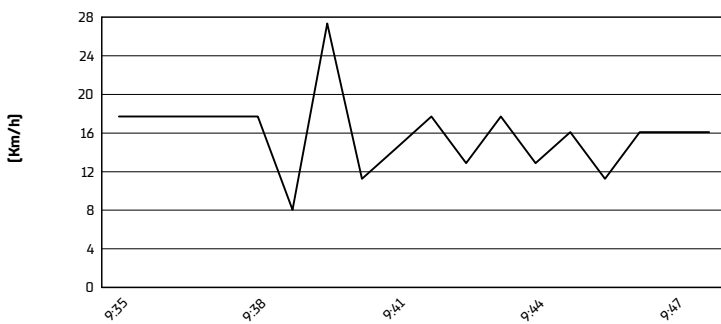
**Air Pressure**



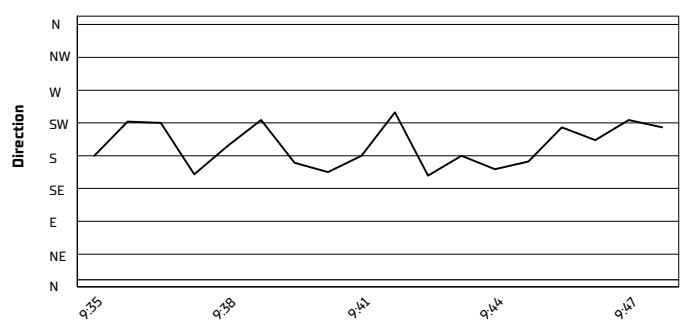
**Humidity**



**Wind Speed**



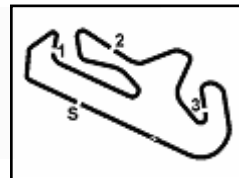
**Wind Direction**



29/03/2026

These data/results cannot be reproduced, stored and/or transmitted in whole or in part by any manner of electronic, mechanical, photocopying, recording, broadcasting or otherwise now known or herein after developed without the previous express consent by the copyright owner, except for reproduction in daily press and regular printed publications on sale to the public within 60 days of the event related to those data/results and always provided that copyright symbol appears together as follows below.

© DORNA WSBK ORGANIZATION Srl 2026



Portimao 4.492 m

## Pirelli Portuguese Round, 27-29 March 2026

### Starting Grid - Race 2 (11 Laps x 4,492 km = 49,412 km)

1	1	<b>71</b> VENEMAN L. Kawasaki 1'48.894	2	<b>47</b> TORRES A. Kawasaki 1'49.077	3	<b>65</b> FLEERACKERS F. Suzuki 1'49.242
2	4	<b>38</b> SALVADOR D. Kawasaki 1'49.367	5	<b>36</b> PONCET D. Honda 1'49.570	6	<b>6</b> BUIS J. Suzuki 1'49.621
3	7	<b>16</b> FUERTES A. Kawasaki 1'49.477	8	<b>34</b> ARTIGAS X. Kawasaki 1'49.677	9	<b>18</b> IERACI B. Triumph 1'49.684
4	10	<b>91</b> VANNUCCI M. Aprilia 1'48.553	11	<b>50</b> THOMPSON C. Yamaha 1'49.444	12	<b>43</b> GAGGI M. Yamaha 1'49.481
5	13	<b>23</b> BARTOLINI E. Triumph 1'49.510	14	<b>68</b> BEEKMANS K. Suzuki 1'48.785	15	<b>41</b> PERISTERAS I. Aprilia 1'49.553
6	16	<b>33</b> SANCHEZ G. Yamaha 1'49.635	17	<b>98</b> BENETTI T. Aprilia 1'49.640	18	<b>11</b> SORRENTI M. Aprilia 1'49.744
7	19	<b>39</b> RISUENO J. Kawasaki 1'49.745	20	<b>7</b> FERNANDEZ B. Kove 1'49.795	21	<b>69</b> DI PERSIO A. Yamaha 1'49.843
8	22	<b>55</b> DESSOY H. Triumph 1'49.890	23	<b>12</b> MAIER H. Yamaha 1'49.916	24	<b>26</b> GENNAI M. Yamaha 1'50.071
9	25	<b>77</b> OSUNA J. Kawasaki 1'50.355	26	<b>93</b> AGASKA A. Yamaha 1'50.644	27	<b>40</b> CORREA J. Kawasaki 1'50.767
10	28	<b>89</b> AKSU T. Yamaha 1'50.883	29	<b>92</b> CAZARD G. Yamaha 1'51.427	30	<b>21</b> SOVICKA T. Yamaha 1'51.947
11	31	<b>66</b> TONN P. Kove 1'52.137	32	<b>27</b> MULYA F. Yamaha 1'52.743	33	<b>79</b> ALONSO T. Yamaha 1'52.760

N.16 (Fuertes A.) has been penalized with a drop of 3 grid positions - Slow on racing line during warm up 2  
 N.68 (Beekmas K.) has been penalized with a drop of 3 grid positions - Slow on racing line during warm up 2  
 N.73 (Seabright F.) will not take part in the race - Declared unfit after Race 1

29/03/2026 The Race Director: **Stefano Carioia**

\* = Penalized

These data/results cannot be reproduced, stored and/or transmitted in whole or in part by any manner of electronic, mechanical, photocopying, recording, broadcasting or otherwise now known or herein after developed without the previous express consent by the copyright owner, except for reproduction in daily press and regular printed publications on sale to the public within 60 days of the event related to those data/results and always provided that copyright symbol appears together as follows below. © DORNA WSBK ORGANIZATION Srl 2026