

Pirelli Portuguese Round, 27-29 March 2026  
Results Tissot Superpole

No.	Rider	Nat	Team	Bike	Time	Gap	Rel.	Laps	Speed	
									Avg	Max
1	<b>6</b> M. HERRERA	ESP	Terra & Vita GRT Yamaha WorldWCR	Yamaha YZF-R7	<b>1'52.572</b>			11	143,652	<b>223,0</b>
2	<b>58</b> P. RAMOS	ESP	Klint Racing Team	Yamaha YZF-R7	<b>1'52.988</b>	0.416	0.416	9	143,123	<b>216,3</b>
3	<b>96</b> R. PONZIANI	ITA	Klint Racing Team	Yamaha YZF-R7	<b>1'53.710</b>	1.138	0.722	10	142,214	<b>220,2</b>
4	<b>36</b> B. NEILA	ESP	Ampito Crescent Yamaha	Yamaha YZF-R7	<b>1'54.141</b>	1.569	0.431	9	141,677	<b>213,7</b>
5	<b>11</b> Y. CERPA	ESP	MotosCerpa	Yamaha YZF-R7	<b>1'54.149</b>	1.577	0.008	10	141,667	<b>222,5</b>
6	<b>8</b> T. RELPH	AUS	Full Throttle Racing	Yamaha YZF-R7	<b>1'54.253</b>	1.681	0.104	11	141,539	<b>217,2</b>
7	<b>94</b> L. BOUDESSEUL	FRA	GMT94 Yamaha	Yamaha YZF-R7	<b>1'54.309</b>	1.737	0.056	9	141,469	<b>218,5</b>
8	<b>64</b> S. SANCHEZ	ESP	Hadden Racing Team	Yamaha YZF-R7	<b>1'54.324</b>	1.752	0.015	11	141,451	<b>217,6</b>
9	<b>46</b> P. RUIZ	ESP	PR46+1 Racing Team	Yamaha YZF-R7	<b>1'54.477</b>	1.905	0.153	10	141,262	<b>211,2</b>
10	<b>20</b> N. RIVERA	ESP	Terra & Vita GRT Yamaha WorldWCR	Yamaha YZF-R7	<b>1'54.727</b>	2.155	0.250	11	140,954	<b>214,6</b>
11	<b>83</b> A. MADRIGAL	MEX	Pons Italika Racing FIMLA	Yamaha YZF-R7	<b>1'54.732</b>	2.160	0.005	9	140,948	<b>222,5</b>
12	<b>4</b> E. BONDI	FRA	FT Racing Academy	Yamaha YZF-R7	<b>1'54.791</b>	2.219	0.059	11	140,875	<b>222,5</b>
13	<b>12</b> M. SARAPUECH	THA	EEST NJT Racing Team	Yamaha YZF-R7	<b>1'54.926</b>	2.354	0.135	9	140,710	<b>220,2</b>
14	<b>15</b> C. JONES	GBR	Monster Energy Crescent Yamaha	Yamaha YZF-R7	<b>1'55.126</b>	2.554	0.200	11	140,465	<b>215,4</b>
15	<b>37</b> L. VIEILLARD	FRA	FT Racing Academy	Yamaha YZF-R7	<b>1'55.205</b>	2.633	0.079	11	140,369	<b>219,4</b>
16	<b>66</b> K. DANAK	POL	Yamaha AD78 FIMLA	Yamaha YZF-R7	<b>1'55.345</b>	2.773	0.140	10	140,199	<b>221,6</b>
17	<b>99</b> I. CARRENO	CHI	Pons Italika Racing FIMLA	Yamaha YZF-R7	<b>1'55.348</b>	2.776	0.003	9	140,195	<b>215,9</b>
18	<b>88</b> D. DAL ZOTTO	ITA	PATA AG Motorsport Italia	Yamaha YZF-R7	<b>1'55.694</b>	3.122	0.346	10	139,776	<b>212,5</b>
19	<b>22</b> M. GUARINO	ITA	Prata Motor Sport	Yamaha YZF-R7	<b>1'56.086</b>	3.514	0.392	11	139,304	<b>222,0</b>
20	<b>14</b> M. DOBBS	USA	YVS Sabadell Diva Racing	Yamaha YZF-R7	<b>1'56.093</b>	3.521	0.007	10	139,295	<b>211,6</b>
21	<b>19</b> A. OUREDNICKOVA	CZE	Dafitmotoracing	Yamaha YZF-R7	<b>1'56.274</b>	3.702	0.181	12	139,078	<b>217,2</b>
22	<b>41</b> A. BARALE	ITA	Hadden Racing Team	Yamaha YZF-R7	<b>1'56.395</b>	3.823	0.121	11	138,934	<b>214,2</b>
23	<b>26</b> K. HAND	GBR	Team Trasimeno	Yamaha YZF-R7	<b>1'56.818</b>	4.246	0.423	11	138,431	<b>210,8</b>
24	<b>44</b> P. SOWA	POL	Team Trasimeno	Yamaha YZF-R7	<b>1'57.284</b>	4.712	0.466	12	137,881	<b>216,3</b>
25	<b>16</b> L. MICHEL	GER	TSL-Racing	Yamaha YZF-R7	<b>1'58.489</b>	5.917	1.205	4	136,478	<b>219,8</b>

Qualifying Lap Time (110% of 1'52.572): 2'03.830

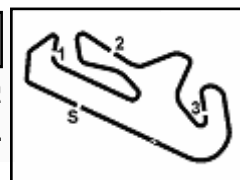
AIR	Humidity:	29%	Temp:	23°C
TRACK	Condition:	Dry	Temp:	43°C

Records	Pole	[SP]	2024 M.Herrera	1'54.609	141,100	Km/h
	Race	[RC1]	2024 S.Sanchez	1'53.691	142,240	Km/h
	All Times	[FP]	2026 P.Ramos	1'53.567	142,390	Km/h

27/03/2026 Start 13:30 End 13:59 The results are provisional until the end of the time limit for protests and appeals and the completion of the technical checks. Clerk Of The Course: **Beatriz Aguas** Publication Time: **14:02**

These data/results cannot be reproduced, stored and/or transmitted in whole or in part by any manner of electronic, mechanical, photocopying, recording, broadcasting or otherwise now known or herein after developed without the previous express consent by the copyright owner, except for reproduction in daily press and regular printed publications on sale to the public within 60 days of the event related to those data/results and always provided that copyright symbol appears together as follows below.

© DORNA WSBK ORGANIZATION Srl 2026



**Pirelli Portuguese Round, 27-29 March 2026**  
**Results Tissot Superpole**

**Session Highlights**

Local Time	No. Rider	Description
13.04.00		Start of Session
13.30.00		Start of Session
13.31.09	<b>16 L. MICHEL</b>	#16 RACELINK IS OFF
13.37.04	<b>6 M. HERRERA</b>	#6 On Asphalt - Rejoined - Turn 1
13.37.04	<b>83 A. MADRIGAL</b>	#83 On Asphalt - Rejoined - Turn 1
13.37.30	<b>58 P. RAMOS</b>	#58 On Asphalt - Rejoined - Turn 1
13.38.48	<b>16 L. MICHEL</b>	#16 BLACK FLAG - Racelink Not Working
13.44.04	<b>26 K. HAND</b>	#26 On Asphalt - Rejoined - Turn 5
13.53.42		Yellow Flag Out - Turn 8
13.53.51		Yellow Flag In - Turn 8
13.53.52		Riders Under Yellow Flag at Turn 8: #19 #44
13.59.55		End of Session

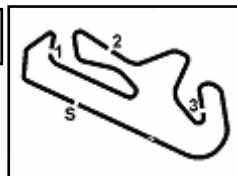
**Fastest Laps Sequence**

No.	Rider	Nat	Team	Bike	Local Time	Time	Gap	Avg
<b>16</b>	<b>L. MICHEL</b>	GER	TSL-Racing	Yamaha YZF-R7	13:34'38.917	<b>2'16.533</b>		118,442
<b>14</b>	<b>M. DOBBS</b>	USA	YVS Sabadell Diva Racing	Yamaha YZF-R7	13:34'49.607	<b>1'57.532</b>	-19.001	137,590
<b>20</b>	<b>N. RIVERA</b>	ESP	Terra & Vita GRT Yamaha WorldWCR	Yamaha YZF-R7	13:35'27.701	<b>1'57.090</b>	-0.442	138,109
<b>96</b>	<b>R. PONZIANI</b>	ITA	Klinter Racing Team	Yamaha YZF-R7	13:36'37.025	<b>1'56.040</b>	-1.050	139,359
<b>6</b>	<b>M. HERRERA</b>	ESP	Terra & Vita GRT Yamaha WorldWCR	Yamaha YZF-R7	13:36'38.740	<b>1'52.923</b>	-3.117	143,206
<b>6</b>	<b>M. HERRERA</b>	ESP	Terra & Vita GRT Yamaha WorldWCR	Yamaha YZF-R7	13:52'18.586	<b>1'52.572</b>	-0.351	143,652

27/03/2026      Start 13:30      End 13:59      The results are provisional until the end of the time limit for protests and appeals and the completion of the technical checks.      Clerk Of The Course: **Beatriz Aguas**      Publication Time: **14:02**

These data/results cannot be reproduced, stored and/or transmitted in whole or in part by any manner of electronic, mechanical, photocopying, recording, broadcasting or otherwise now known or herein after developed without the previous express consent by the copyright owner, except for reproduction in daily press and regular printed publications on sale to the public within 60 days of the event related to those data/results and always provided that copyright symbol appears together as follows below.

© DORNA WSBK ORGANIZATION Srl 2026



Portimao 4.492 m

**Pirelli Portuguese Round, 27-29 March 2026  
Best Sectors & Speed Tissot Superpole**

**BEST LAP**

1	<b>6</b> M. HERRERA	Yamaha YZF-R7	1'52.572
2	<b>58</b> P. RAMOS	Yamaha YZF-R7	1'52.988
3	<b>96</b> R. PONZIANI	Yamaha YZF-R7	1'53.710
4	<b>36</b> B. NEILA	Yamaha YZF-R7	1'54.141
5	<b>11</b> Y. CERPA	Yamaha YZF-R7	1'54.149
6	<b>8</b> T. RELPH	Yamaha YZF-R7	1'54.253
7	<b>94</b> L. BOUDESSEUL	Yamaha YZF-R7	1'54.309
8	<b>64</b> S. SANCHEZ	Yamaha YZF-R7	1'54.324
9	<b>46</b> P. RUIZ	Yamaha YZF-R7	1'54.477
10	<b>20</b> N. RIVERA	Yamaha YZF-R7	1'54.727
11	<b>83</b> A. MADRIGAL	Yamaha YZF-R7	1'54.732
12	<b>4</b> E. BONDI	Yamaha YZF-R7	1'54.791
13	<b>12</b> M. SARAPUECH	Yamaha YZF-R7	1'54.926
14	<b>15</b> C. JONES	Yamaha YZF-R7	1'55.126
15	<b>37</b> L. VIEILLARD	Yamaha YZF-R7	1'55.205
16	<b>66</b> K. DANAK	Yamaha YZF-R7	1'55.345
17	<b>99</b> I. CARRENO	Yamaha YZF-R7	1'55.348
18	<b>88</b> D. DAL ZOTTO	Yamaha YZF-R7	1'55.694
19	<b>22</b> M. GUARINO	Yamaha YZF-R7	1'56.086
20	<b>14</b> M. DOBBS	Yamaha YZF-R7	1'56.093
21	<b>19</b> A. OUREDNICKOVA	Yamaha YZF-R7	1'56.274
22	<b>41</b> A. BARALE	Yamaha YZF-R7	1'56.395
23	<b>26</b> K. HAND	Yamaha YZF-R7	1'56.818
24	<b>44</b> P. SOWA	Yamaha YZF-R7	1'57.284
25	<b>16</b> L. MICHEL	Yamaha YZF-R7	1'58.489

**SPEED**

1	<b>6</b> M. HERRERA	Yamaha YZF-R7	223,0
2	<b>4</b> E. BONDI	Yamaha YZF-R7	222,5
3	<b>11</b> Y. CERPA	Yamaha YZF-R7	222,5
4	<b>83</b> A. MADRIGAL	Yamaha YZF-R7	222,5
5	<b>22</b> M. GUARINO	Yamaha YZF-R7	222,0
6	<b>66</b> K. DANAK	Yamaha YZF-R7	221,6
7	<b>12</b> M. SARAPUECH	Yamaha YZF-R7	220,2
8	<b>96</b> R. PONZIANI	Yamaha YZF-R7	220,2
9	<b>16</b> L. MICHEL	Yamaha YZF-R7	219,8
10	<b>37</b> L. VIEILLARD	Yamaha YZF-R7	219,4
11	<b>94</b> L. BOUDESSEUL	Yamaha YZF-R7	218,5
12	<b>64</b> S. SANCHEZ	Yamaha YZF-R7	217,6
13	<b>19</b> A. OUREDNICKOVA	Yamaha YZF-R7	217,2
14	<b>8</b> T. RELPH	Yamaha YZF-R7	217,2
15	<b>44</b> P. SOWA	Yamaha YZF-R7	216,3
16	<b>58</b> P. RAMOS	Yamaha YZF-R7	216,3
17	<b>99</b> I. CARRENO	Yamaha YZF-R7	215,9
18	<b>15</b> C. JONES	Yamaha YZF-R7	215,4
19	<b>20</b> N. RIVERA	Yamaha YZF-R7	214,6
20	<b>41</b> A. BARALE	Yamaha YZF-R7	214,2
21	<b>36</b> B. NEILA	Yamaha YZF-R7	213,7
22	<b>88</b> D. DAL ZOTTO	Yamaha YZF-R7	212,5
23	<b>14</b> M. DOBBS	Yamaha YZF-R7	211,6
24	<b>46</b> P. RUIZ	Yamaha YZF-R7	211,2
25	<b>26</b> K. HAND	Yamaha YZF-R7	210,8

**SEG. 1**

1	<b>6</b> M. HERRERA	24.476
2	<b>58</b> P. RAMOS	24.513
3	<b>11</b> Y. CERPA	24.741
4	<b>64</b> S. SANCHEZ	24.764
5	<b>96</b> R. PONZIANI	24.772
6	<b>12</b> M. SARAPUECH	24.838
7	<b>8</b> T. RELPH	24.858
8	<b>46</b> P. RUIZ	24.935
9	<b>15</b> C. JONES	24.949
10	<b>94</b> L. BOUDESSEUL	24.966
11	<b>20</b> N. RIVERA	24.986
12	<b>83</b> A. MADRIGAL	25.000
13	<b>37</b> L. VIEILLARD	25.001
14	<b>22</b> M. GUARINO	25.006
15	<b>36</b> B. NEILA	25.025
16	<b>4</b> E. BONDI	25.053
17	<b>66</b> K. DANAK	25.185
18	<b>41</b> A. BARALE	25.306
19	<b>14</b> M. DOBBS	25.388
20	<b>19</b> A. OUREDNICKOVA	25.396
21	<b>88</b> D. DAL ZOTTO	25.411
22	<b>99</b> I. CARRENO	25.427
23	<b>44</b> P. SOWA	25.505
24	<b>26</b> K. HAND	25.600
25	<b>16</b> L. MICHEL	25.812

**SEG. 2**

1	<b>6</b> M. HERRERA	35.726
2	<b>58</b> P. RAMOS	35.877
3	<b>36</b> B. NEILA	36.032
4	<b>11</b> Y. CERPA	36.125
5	<b>96</b> R. PONZIANI	36.149
6	<b>83</b> A. MADRIGAL	36.211
7	<b>20</b> N. RIVERA	36.226
8	<b>4</b> E. BONDI	36.228
9	<b>46</b> P. RUIZ	36.240
10	<b>64</b> S. SANCHEZ	36.322
11	<b>8</b> T. RELPH	36.333
12	<b>94</b> L. BOUDESSEUL	36.333
13	<b>66</b> K. DANAK	36.338
14	<b>88</b> D. DAL ZOTTO	36.546
15	<b>15</b> C. JONES	36.607
16	<b>99</b> I. CARRENO	36.652
17	<b>12</b> M. SARAPUECH	36.659
18	<b>37</b> L. VIEILLARD	36.680
19	<b>19</b> A. OUREDNICKOVA	36.761
20	<b>14</b> M. DOBBS	36.841
21	<b>26</b> K. HAND	36.892
22	<b>22</b> M. GUARINO	36.927
23	<b>44</b> P. SOWA	37.088
24	<b>41</b> A. BARALE	37.144
25	<b>16</b> L. MICHEL	37.453

**SEG. 3**

1	<b>6</b> M. HERRERA	27.163
2	<b>58</b> P. RAMOS	27.244
3	<b>36</b> B. NEILA	27.390
4	<b>96</b> R. PONZIANI	27.404
5	<b>8</b> T. RELPH	27.448
6	<b>94</b> L. BOUDESSEUL	27.530
7	<b>11</b> Y. CERPA	27.567
8	<b>4</b> E. BONDI	27.567
9	<b>46</b> P. RUIZ	27.580
10	<b>83</b> A. MADRIGAL	27.630
11	<b>88</b> D. DAL ZOTTO	27.675
12	<b>12</b> M. SARAPUECH	27.701
13	<b>37</b> L. VIEILLARD	27.709
14	<b>20</b> N. RIVERA	27.714
15	<b>64</b> S. SANCHEZ	27.736
16	<b>15</b> C. JONES	27.738
17	<b>66</b> K. DANAK	27.827
18	<b>14</b> M. DOBBS	27.904
19	<b>99</b> I. CARRENO	27.910
20	<b>22</b> M. GUARINO	28.017
21	<b>41</b> A. BARALE	28.092
22	<b>19</b> A. OUREDNICKOVA	28.178
23	<b>44</b> P. SOWA	28.262
24	<b>26</b> K. HAND	28.293
25	<b>16</b> L. MICHEL	28.338

**SEG. 4**

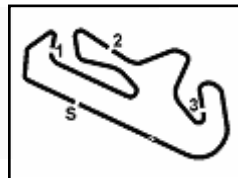
1	<b>6</b> M. HERRERA	25.121
2	<b>58</b> P. RAMOS	25.185
3	<b>94</b> L. BOUDESSEUL	25.292
4	<b>64</b> S. SANCHEZ	25.308
5	<b>96</b> R. PONZIANI	25.318
6	<b>8</b> T. RELPH	25.333
7	<b>99</b> I. CARRENO	25.359
8	<b>4</b> E. BONDI	25.488
9	<b>20</b> N. RIVERA	25.515
10	<b>22</b> M. GUARINO	25.558
11	<b>11</b> Y. CERPA	25.563
12	<b>46</b> P. RUIZ	25.598
13	<b>36</b> B. NEILA	25.601
14	<b>15</b> C. JONES	25.605
15	<b>37</b> L. VIEILLARD	25.610
16	<b>41</b> A. BARALE	25.645
17	<b>12</b> M. SARAPUECH	25.687
18	<b>83</b> A. MADRIGAL	25.690
19	<b>66</b> K. DANAK	25.711
20	<b>19</b> A. OUREDNICKOVA	25.739
21	<b>14</b> M. DOBBS	25.746
22	<b>88</b> D. DAL ZOTTO	25.841
23	<b>26</b> K. HAND	25.856
24	<b>44</b> P. SOWA	26.076
25	<b>16</b> L. MICHEL	26.142

27/03/2026

These data/results cannot be reproduced, stored and/or transmitted in whole or in part by any manner of electronic, mechanical, photocopying, recording, broadcasting or otherwise now known or herein after developed without the previous express consent by the copyright owner, except for reproduction in daily press and regular printed publications on sale to the public within 60 days of the event related to those data/results and always provided that copyright symbol appears together as follows below.

© DORNA WSBK ORGANIZATION Srl 2026





Portimao 4.492 m

**Pirelli Portuguese Round, 27-29 March 2026**

**Ideal Times Tissot Superpole**

No. Rider	Nat	Bike	Seg. 1 Diff. 1	Seg. 2 Diff. 2	Seg. 3 Diff. 3	Seg. 4 Diff. 4	Ideal Time Best Lap	Pos.	Diff.
1	<b>6 M. HERRERA</b>	ESP Yamaha YZF-R7	<b>24.476</b>	<b>35.726</b>	<b>27.163</b> +0.067	<b>25.121</b> +0.019	<b>1'52.486</b> 1'52.572	1	0.086
2	<b>58 P. RAMOS</b>	ESP Yamaha YZF-R7	24.513	35.877 +0.049	27.244 +0.120	25.185	<b>1'52.819</b> 1'52.988	2	0.169
3	<b>96 R. PONZIANI</b>	ITA Yamaha YZF-R7	24.772 +0.067	36.149	27.404	25.318	<b>1'53.643</b> 1'53.710	3	0.067
4	<b>8 T. RELPH</b>	AUS Yamaha YZF-R7	24.858	36.333	27.448 +0.131	25.333 +0.150	<b>1'53.972</b> 1'54.253	6	0.281
5	<b>11 Y. CERPA</b>	ESP Yamaha YZF-R7	24.741	36.125	27.567	25.563 +0.153	<b>1'53.996</b> 1'54.149	5	0.153
6	<b>36 B. NEILA</b>	ESP Yamaha YZF-R7	25.025 +0.026	36.032	27.390 +0.059	25.601 +0.008	<b>1'54.048</b> 1'54.141	4	0.093
7	<b>94 L. BOUDESSEUL</b>	FRA Yamaha YZF-R7	24.966 +0.003	36.333	27.530	25.292 +0.185	<b>1'54.121</b> 1'54.309	7	0.188
8	<b>64 S. SANCHEZ</b>	ESP Yamaha YZF-R7	24.764	36.322 +0.044	27.736 +0.150	25.308	<b>1'54.130</b> 1'54.324	8	0.194
9	<b>4 E. BONDI</b>	FRA Yamaha YZF-R7	25.053 +0.139	36.228 +0.209	27.567 +0.107	25.488	<b>1'54.336</b> 1'54.791	12	0.455
10	<b>46 P. RUIZ</b>	ESP Yamaha YZF-R7	24.935	36.240	27.580	25.598 +0.124	<b>1'54.353</b> 1'54.477	9	0.124
11	<b>20 N. RIVERA</b>	ESP Yamaha YZF-R7	24.986 +0.143	36.226	27.714	25.515 +0.143	<b>1'54.441</b> 1'54.727	10	0.286
12	<b>83 A. MADRIGAL</b>	MEX Yamaha YZF-R7	25.000 +0.201	36.211	27.630	25.690	<b>1'54.531</b> 1'54.732	11	0.201
13	<b>12 M. SARAPUECH</b>	THA Yamaha YZF-R7	24.838	36.659 +0.041	27.701	25.687	<b>1'54.885</b> 1'54.926	13	0.041
14	<b>15 C. JONES</b>	GBR Yamaha YZF-R7	24.949 +0.101	36.607 +0.046	27.738	25.605 +0.080	<b>1'54.899</b> 1'55.126	14	0.227
15	<b>37 L. VIEILLARD</b>	FRA Yamaha YZF-R7	25.001 +0.205	36.680	27.709	25.610	<b>1'55.000</b> 1'55.205	15	0.205
16	<b>66 K. DANAK</b>	POL Yamaha YZF-R7	25.185 +0.002	36.338 +0.259	27.827 +0.002	25.711 +0.021	<b>1'55.061</b> 1'55.345	16	0.284
17	<b>99 I. CARRENO</b>	CHI Yamaha YZF-R7	25.427	36.652	27.910	25.359	<b>1'55.348</b> 1'55.348	17	
18	<b>88 D. DALZOTTO</b>	ITA Yamaha YZF-R7	25.411	36.546	27.675 +0.187	25.841 +0.034	<b>1'55.473</b> 1'55.694	18	0.221
19	<b>22 M. GUARINO</b>	ITA Yamaha YZF-R7	25.006 +0.217	36.927	28.017 +0.357	25.558 +0.004	<b>1'55.508</b> 1'56.086	19	0.578
20	<b>14 M. DOBBS</b>	USA Yamaha YZF-R7	25.388	36.841 +0.137	27.904	25.746 +0.077	<b>1'55.879</b> 1'56.093	20	0.214
21	<b>19 A. OUREDNIKOVA</b>	CZE Yamaha YZF-R7	25.396 +0.042	36.761 +0.079	28.178 +0.061	25.739 +0.018	<b>1'56.074</b> 1'56.274	21	0.200
22	<b>41 A. BARALE</b>	ITA Yamaha YZF-R7	25.306 +0.002	37.144 +0.175	28.092	25.645 +0.031	<b>1'56.187</b> 1'56.395	22	0.208
23	<b>26 K. HAND</b>	GBR Yamaha YZF-R7	25.600	36.892	28.293	25.856 +0.177	<b>1'56.641</b> 1'56.818	23	0.177
24	<b>44 P. SOWA</b>	POL Yamaha YZF-R7	25.505 +0.070	37.088 +0.133	28.262 +0.150	26.076	<b>1'56.931</b> 1'57.284	24	0.353
25	<b>16 L. MICHEL</b>	GER Yamaha YZF-R7	25.812 +0.134	37.453 +0.016	28.338	26.142 +0.594	<b>1'57.745</b> 1'58.489	25	0.744
<b>Overall Ideal Time</b>			24.476	35.726	27.163	25.121	<b>1'52.486</b>		

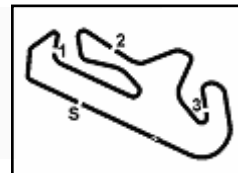
27/03/2026

These data/results cannot be reproduced, stored and/or transmitted in whole or in part by any manner of electronic, mechanical, photocopying, recording, broadcasting or otherwise now known or herein after developed without the previous express consent by the copyright owner, except for reproduction in daily press and regular printed publications on sale to the public within 60 days of the event related to those data/results and always provided that copyright symbol appears together as follows below.

© DORNA WSBK ORGANIZATION Srl 2026

FICR PERUGIA TIMING





Portimao 4.492 m

**Pirelli Portuguese Round, 27-29 March 2026**  
**Chronological Analysis Tissot Superpole**

1 / 3

1° 6 M. HERRERA [1'52.572]							
Lap	Seg1	Seg2	Seg3	Seg4	Lap Time	km/h	Local Time
1	24.883	37.147	27.752	25.527	1'52.923	214,6	13:34'45.817
2	38.209	39.274	28.885	25.589	2'11.957	<b>223,0</b>	13:38'50.697
3	24.914	35.765	27.218	25.325	1'53.222	209,6	13:40'43.919
4	24.665	36.079	27.909	30.285	1'58.938	214,6	13:42'42.857
5	24.999	35.823	27.164	25.152	1'53.138	211,2	13:44'35.995
6	24.988	35.776	27.165	25.242	1'53.171	218,0	13:46'29.166
7	24.766	44.738	28.171	25.738	2'03.413	220,2	13:48'32.579
8	24.659	35.840	27.585	25.351	1'53.435	215,4	13:50'26.014
9	<b>24.476</b>	<b>35.726</b>	27.230	25.140	<b>1'52.572</b>	218,5	13:52'18.586
10	24.632	35.738	27.665	25.244	1'53.279	221,6	13:54'11.865
11	31.592	36.811	27.889	25.436	2'01.728	217,6	13:56'13.593

2° 58 P. RAMOS [1'52.988]							
Lap	Seg1	Seg2	Seg3	Seg4	Lap Time	km/h	Local Time
1	25.068	36.208	27.469	25.204	1'53.949	<b>216,3</b>	13:37'06.799
2	31.661	38.496	29.687	25.523	2'05.367	215,0	13:39'12.166
3	25.041	37.047	29.415	51.641	2'23.144P	210,8	13:41'35.310
4	3'01.663	37.075	27.953	25.450	4'32.141P		13:46'07.451
5	25.041	35.967	27.459	25.270	1'53.737	210,0	13:48'01.188
6	24.754	35.886	<b>27.244</b>	25.226	1'53.110	211,2	13:49'54.298
7	<b>24.513</b>	35.926	27.364	<b>25.185</b>	<b>1'52.988</b>	212,5	13:51'47.286
8	24.707	43.038	27.785	25.434	2'00.964	212,1	13:53'48.250
9	24.728	<b>35.877</b>	27.539	25.435	1'53.579	212,1	13:55'41.829

3° 96 R. PONZIANI [1'53.710]							
Lap	Seg1	Seg2	Seg3	Seg4	Lap Time	km/h	Local Time
1	25.586	36.348	28.513	25.593	1'56.040	212,5	13:36'37.025
2	25.301	36.305	27.852	25.832	1'55.290	210,8	13:38'32.315
3	26.134	49.584	27.928	25.785	2'09.431	207,6	13:40'41.746
4	25.427	37.200	28.546	26.129	1'57.302	212,9	13:42'39.048
5	25.092	36.387	27.482	25.491	1'54.452	210,8	13:44'33.500
6	25.063	36.964	27.794	51.781	2'21.602P	217,2	13:46'55.102
7	1'57.250	38.134	29.907	26.378	3'31.669P		13:50'26.771
8	25.065	36.269	28.568	25.608	1'55.510	218,0	13:52'22.281
9	24.839	<b>36.149</b>	<b>27.404</b>	<b>25.318</b>	<b>1'53.710</b>	219,8	13:54'15.991
10	<b>24.772</b>	36.795	28.643	25.571	1'55.781	<b>220,2</b>	13:56'11.772

4° 36 B. NEILA [1'54.141]							
Lap	Seg1	Seg2	Seg3	Seg4	Lap Time	km/h	Local Time
1	32.236	38.667	28.625	26.155			13:35'07.650
2	25.405	38.225	28.062	25.853	2'04.376	<b>213,7</b>	13:37'12.026
3	25.072	36.633	27.584	25.606	1'55.228	210,8	13:39'07.254
4	25.072	36.450	27.894	25.874	1'55.290	211,6	13:41'02.544
5	25.139	36.154	<b>27.390</b>	25.686	1'54.369	208,0	13:42'56.913
6	<b>25.025</b>	36.402	28.221	54.940	2'24.588P	210,8	13:45'21.501
7	2'31.094	42.786	27.839	25.628	4'07.347P		13:49'28.848
8	29.572	37.670	27.846	<b>25.601</b>	2'00.689	208,4	13:51'29.537
9	25.228	36.265	27.615	25.761	1'54.869	208,8	13:53'24.406
10	25.051	<b>36.032</b>	27.449	25.609	<b>1'54.141</b>	208,8	13:55'18.547

5° 11 Y. CERPA [1'54.149]							
Lap	Seg1	Seg2	Seg3	Seg4	Lap Time	km/h	Local Time
1	26.045	36.755	27.839	25.670	1'56.309	201,0	13:37'08.981
2	25.444	36.508	27.730	25.589	1'55.271	210,8	13:39'04.252
3	28.766	38.397	29.560	26.055	2'02.778	207,6	13:41'07.030
4	25.041	36.170	29.083	26.292	1'56.586	212,1	13:43'03.616
5	25.043	36.566	28.086	25.808	1'55.503	212,1	13:44'59.119

6	25.048	36.500	28.155	46.635	2'16.338P	210,8	13:47'15.457
7	1'38.055	38.540	28.929	25.973	3'11.497P		13:50'26.954
8	25.052	36.389	27.603	<b>25.563</b>	1'54.607	<b>222,5</b>	13:52'21.561
9	<b>24.741</b>	<b>36.125</b>	<b>27.567</b>	25.716	<b>1'54.149</b>	217,2	13:54'15.710
10	25.498	36.837	29.363	26.190	1'57.888	211,6	13:56'13.598

6° 8 T. RELPH [1'54.253]							
Lap	Seg1	Seg2	Seg3	Seg4	Lap Time	km/h	Local Time
1	27.768	43.566	35.561	27.498			13:33'00.324
2	25.727	37.317	28.665	26.406	1'58.115	<b>217,2</b>	13:37'04.070
3	27.187	39.256	28.877	25.822	2'01.142	209,6	13:39'05.212
4	25.386	37.315	27.896	25.714	1'56.311	213,7	13:41'01.523
5	25.420	36.720	27.898	<b>25.333</b>	1'55.371	208,0	13:42'56.894
6	25.451	36.604	27.777	51.830	2'21.662P	209,2	13:45'18.556
7	1'20.017	37.585	27.856	25.514	2'50.972P		13:48'09.528
8	25.084	36.420	<b>27.448</b>	25.411	1'54.363	212,1	13:50'03.891
9	24.860	36.399	27.624	25.478	1'54.361	213,3	13:51'58.252
10	<b>24.858</b>	<b>36.333</b>	27.579	25.483	<b>1'54.253</b>	213,7	13:53'52.505
11	24.894	36.355	27.613	25.436	1'54.298	214,6	13:55'46.803

7° 94 L. BOUDESSEUL [1'54.309]							
Lap	Seg1	Seg2	Seg3	Seg4	Lap Time	km/h	Local Time
1	31.424	37.594	27.729	25.352	2'02.099	<b>218,5</b>	13:37'07.620
2	29.787	38.054	27.840	25.630	2'01.311	217,6	13:39'08.931
3	25.069	37.538	29.010	25.574	1'57.191	212,9	13:41'06.122
4	25.008	36.415	27.796	<b>25.292</b>	1'54.511	214,2	13:43'00.633
5	25.010	36.575	27.572	25.517	1'54.674	213,3	13:44'55.307
6	<b>24.966</b>	36.541	29.213	45.955	2'16.675P	215,0	13:47'11.982
7	2'45.427	37.058	27.780	25.453	4'15.718P		13:51'27.700
8	28.943	36.504	27.698	25.467	1'58.612	211,6	13:53'26.312
9	24.969	<b>36.333</b>	<b>27.530</b>	25.477	<b>1'54.309</b>	213,3	13:55'20.621

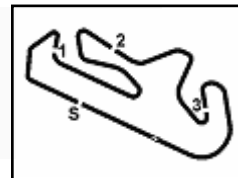
8° 64 S. SANCHEZ [1'54.324]							
Lap	Seg1	Seg2	Seg3	Seg4	Lap Time	km/h	Local Time
1	25.569	37.767	30.523	25.756	1'59.615	212,5	13:36'37.528
2	25.705	38.799	28.671	25.837	1'59.012	213,3	13:38'36.540
3	24.999	36.647	28.075	25.713	1'55.434	214,6	13:40'31.974
4	25.277	36.567	28.100	25.574	1'55.518	211,6	13:42'27.492
5	27.862	42.005	28.734	26.266	2'04.867	212,5	13:44'32.359
6	25.195	36.821	27.934	25.650	1'55.600	211,6	13:46'27.959
7	24.880	<b>36.322</b>	27.981	25.491	1'54.674	211,6	13:48'22.633
8	26.319	37.464	28.326	25.473	1'57.582	208,4	13:50'20.215
9	<b>24.764</b>	36.366	27.886	<b>25.308</b>	<b>1'54.324</b>	<b>217,6</b>	13:52'14.539
10	24.799	36.699	<b>27.736</b>	25.390	1'54.624	215,9	13:54'09.163
11	24.771	36.351	27.887	25.495	1'54.504	213,3	13:56'03.667

9° 46 P. RUIZ [1'54.477]							
Lap	Seg1	Seg2	Seg3	Seg4	Lap Time	km/h	Local Time
1	26.495	38.615	30.120	26.639	2'01.869	201,0	13:36'37.012
2	25.565	36.958	27.865	25.977	1'56.365	<b>211,2</b>	13:38'33.377
3	25.744	36.976	27.903	25.993	1'56.616	203,3	13:40'29.993
4	30.422	38.152	29.234	26.428	2'04.236	206,4	13:42'34.229
5	25.171	36.575	28.902	47.409	2'18.057P	208,0	13:44'52.286
6	1'44.653	37.013	27.690	25.689	3'15.045P		13:48'07.331
7	25.023	36.730	27.770	<b>25.598</b>	1'55.121	208,8	13:50'02.452
8	24.990	36.374	27.764	25.783	1'54.911	209,6	13:51'57.363
9	25.079	36.274	27.615	25.704	1'54.672	209,2	13:53'52.035
10	<b>24.935</b>	<b>36.240</b>	<b>27.580</b>	25.722	<b>1'54.477</b>	210,0	13:55'46.512

27/03/2026 P = Pits In/Out - C = Lap Time Cancelled

These data/results cannot be reproduced, stored and/or transmitted in whole or in part by any manner of electronic, mechanical, photocopying, recording, broadcasting or otherwise now known or herein after developed without the previous express consent by the copyright owner, except for reproduction in daily press and regular printed publications on sale to the public within 60 days of the event related to those data/results and always provided that copyright symbol appears together as follows below.

© DORNA WSBK ORGANIZATION Srl 2026



Portimao 4.492 m

**Pirelli Portuguese Round, 27-29 March 2026**  
**Chronological Analysis Tissot Superpole**

2 / 3

10° 20 N. RIVERA [1'54.727]							
Lap	Seg.1	Seg.2	Seg.3	Seg.4	Lap Time	km/h	Local Time
		39.609	31.757	26.628			13:33'30.611
1	25.708	37.269	28.120	25.993	1'57.090	208,0	13:35'27.701
2	25.581	37.858	29.225	26.683	1'59.347	208,0	13:37'27.048
3	25.522	36.981	27.951	26.270	1'56.724	205,6	13:39'23.772
4	25.627	36.562	27.893	26.229	1'56.311	202,9	13:41'20.083
5	25.718	37.232	29.642	50.580	2'23.172P	204,5	13:43'43.255
6	1'18.988	36.864	27.854	25.636	2'49.342P		13:46'32.597
7	25.037	36.815	28.356	26.255	1'56.463	210,8	13:48'29.060
8	25.169	37.473	28.345	25.765	1'56.752	210,0	13:50'25.812
9	25.129	<b>36.226</b>	<b>27.714</b>	25.658	<b>1'54.727</b>	210,8	13:52'20.539
10	<b>24.986</b>	36.375	27.940	25.861	1'55.162	<b>214,6</b>	13:54'15.701
11	27.233	37.263	28.326	<b>25.515</b>	1'58.337	210,4	13:56'14.038

11° 83 A. MADRIGAL [1'54.732]							
Lap	Seg.1	Seg.2	Seg.3	Seg.4	Lap Time	km/h	Local Time
		39.372	29.259	32.892			13:34'41.557
1	25.678	36.863	28.229	26.432	1'57.202	219,4	13:36'38.759
2	38.624	38.816	28.324	26.306	2'12.070	220,2	13:38'50.829
3	25.480	36.567	27.883	26.091	1'56.021	210,8	13:40'46.850
4	25.433	37.972	29.785	51.452	2'24.642P	209,6	13:43'11.492
5	3'36.042	39.316	29.605	26.248	5'11.211P		13:48'22.703
6	26.999	38.718	32.197	26.582	2'04.496	214,6	13:50'27.199
7	<b>25.000</b>	36.442	27.761	25.796	1'54.999	<b>222,5</b>	13:52'22.198
8	25.201	<b>36.211</b>	<b>27.630</b>	<b>25.690</b>	<b>1'54.732</b>	218,0	13:54'16.930
9	25.221	36.538	28.161	25.772	1'55.692	216,3	13:56'12.622

12° 4 E. BONDI [1'54.791]							
Lap	Seg.1	Seg.2	Seg.3	Seg.4	Lap Time	km/h	Local Time
		43.054	42.181	32.751			13:34'41.552
1	25.977	36.782	28.265	26.154	1'57.178	217,6	13:36'38.730
2	25.723	37.492	28.181	26.216	1'57.612	219,8	13:38'36.342
3	25.750	36.873	27.874	25.910	1'56.407	208,0	13:40'32.749
4	25.447	36.633	27.917	25.923	1'55.920	210,0	13:42'28.669
5	25.981	41.894	28.665	27.697	2'04.237	207,6	13:44'32.906
6	25.408	36.633	27.844	25.787	1'55.672	212,5	13:46'28.578
7	<b>25.053</b>	36.554	27.737	25.589	1'54.933	212,5	13:48'23.511
8	25.667	37.383	28.436	25.530	1'57.016	219,8	13:50'20.527
9	25.193	36.605	27.677	25.642	1'55.117	<b>222,5</b>	13:52'15.644
10	25.192	36.437	27.674	<b>25.488</b>	<b>1'54.791</b>	215,0	13:54'10.435
11	25.112	<b>36.228</b>	<b>27.567</b>	25.909	1'54.816	217,6	13:56'05.251

13° 12 M. SARAPUECH [1'54.926]							
Lap	Seg.1	Seg.2	Seg.3	Seg.4	Lap Time	km/h	Local Time
		39.001	31.172	26.149			13:35'13.437
1	<b>24.838</b>	36.700	<b>27.701</b>	<b>25.687</b>	<b>1'54.926</b>	<b>220,2</b>	13:37'08.363
2	24.954	<b>36.659</b>	27.763	25.732	1'55.108	216,7	13:39'03.471
3	25.191	43.618	34.017	51.032	2'33.858P	209,6	13:41'37.329
4	3'01.900	37.343	27.947	25.995	4'33.185P		13:46'10.514
5	25.086	36.943	33.218	25.835	2'01.082	211,2	13:48'11.596
6	24.966	36.861	27.777	25.688	1'55.292	213,7	13:50'06.888
7	25.070	36.760	27.808	25.740	1'55.378	213,7	13:52'02.266
8	25.005	36.661	27.923	25.956	1'55.545	213,7	13:53'57.811
9	26.696	39.321	36.110	27.055	2'09.182	212,9	13:56'06.993

14° 15 C. JONES [1'55.126]							
Lap	Seg.1	Seg.2	Seg.3	Seg.4	Lap Time	km/h	Local Time
		38.020	31.067	26.927			13:34'35.311
1	26.613	39.010	30.698	25.867	2'02.188	203,7	13:36'37.499
2	25.416	36.943	27.872	25.783	1'56.014	211,6	13:38'33.513
3	25.397	36.883	27.996	25.938	1'56.214	207,6	13:40'29.727
4	25.415	37.087	28.177	26.392	1'57.071	208,0	13:42'26.798

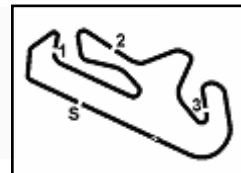
5	30.064	38.755	28.468	25.858	2'03.145	204,8	13:44'29.943
6	25.232	36.708	27.875	25.844	1'55.659	<b>215,4</b>	13:46'25.602
7	25.401	37.168	28.527	25.926	1'57.022	211,6	13:48'22.624
8	25.569	37.226	28.154	25.827	1'56.776	209,2	13:50'19.400
9	25.050	36.653	<b>27.738</b>	25.685	<b>1'55.126</b>	211,6	13:52'14.526
10	25.110	36.754	27.856	<b>25.605</b>	1'55.325	213,3	13:54'09.851
11	<b>24.949</b>	<b>36.607</b>	28.030	25.831	1'55.417	212,1	13:56'05.268

15° 37 L. VIEILLARD [1'55.205]							
Lap	Seg.1	Seg.2	Seg.3	Seg.4	Lap Time	km/h	Local Time
		38.097	28.749	26.218			13:33'08.286
1	25.792	37.571	29.150	25.665	1'58.178	208,0	13:35'06.464
2	25.707	36.957	28.916	26.128	1'57.708	215,4	13:37'04.172
3	25.642	37.082	32.258	27.082	2'02.064	210,8	13:39'06.236
4	25.512	36.877	28.986	25.770	1'57.145	209,6	13:41'03.381
5	25.151	36.683	27.830	25.662	1'55.326	<b>219,4</b>	13:42'58.707
6	25.410	36.915	27.868	26.086	1'56.279	208,0	13:44'54.986
7	25.495	36.772	28.373	46.420	2'17.060P	206,8	13:47'12.046
8	1'38.330	37.219	28.178	25.693	3'09.420P		13:50'21.466
9	25.181	36.934	28.219	25.890	1'56.224	215,0	13:52'17.690
10	25.206	<b>36.680</b>	<b>27.709</b>	<b>25.610</b>	<b>1'55.205</b>	213,7	13:54'12.895
11	<b>25.001</b>	36.918	27.732	25.775	1'55.426	217,2	13:56'08.321

16° 66 K. DANAK [1'55.345]							
Lap	Seg.1	Seg.2	Seg.3	Seg.4	Lap Time	km/h	Local Time
		39.323	29.492	32.424			13:34'41.629
1	26.281	36.921	28.162	25.942	1'57.306	204,1	13:36'38.935
2	26.226	37.249	28.800	49.580	2'21.855P	<b>221,6</b>	13:39'00.790
3	2'00.039	37.564	28.161	25.786	3'31.550P		13:42'32.340
4	25.625	37.090	28.030	25.947	1'56.692	208,8	13:44'29.032
5	25.518	36.901	27.985	25.987	1'56.391	208,4	13:46'25.423
6	<b>25.185</b>	36.984	28.271	<b>25.711</b>	1'56.151	209,2	13:48'21.574
7	25.393	36.932	27.903	25.776	1'56.004	210,8	13:50'17.578
8	25.274	36.594	27.840	25.749	1'55.457	211,2	13:52'13.035
9	25.187	36.597	27.829	25.732	<b>1'55.345</b>	211,6	13:54'08.380
10	25.253	<b>36.338</b>	<b>27.827</b>	25.932	1'55.350	210,4	13:56'03.730

17° 99 I. CARRENO [1'55.348]							
Lap	Seg.1	Seg.2	Seg.3	Seg.4	Lap Time	km/h	Local Time
		39.208	29.377	31.855			13:34'41.257
1	25.569	36.806	28.582	25.990	1'56.947	214,2	13:36'38.204
2	25.454	36.935	28.161	26.038	1'56.588	<b>215,9</b>	13:38'34.792
3	25.716	47.960	27.987	25.868	2'07.531	208,4	13:40'42.323
4	25.483	37.088	28.260	30.234	2'01.065	211,6	13:42'43.388
5	25.517	37.194	28.189	26.229	1'57.129	210,4	13:44'40.517
6	26.806	38.415	29.315	49.496	2'24.032P	208,8	13:47'04.549
7	3'28.390	47.042	28.426	26.127	5'09.985P		13:52'14.534
8	<b>25.427</b>	<b>36.652</b>	<b>27.910</b>	<b>25.359</b>	<b>1'55.348</b>	210,8	13:54'09.882
9	25.823	36.881	29.170	26.113	1'57.987	210,8	13:56'07.869

18° 88 D. DAL ZOTTO [1'55.694]							
Lap	Seg.1	Seg.2	Seg.3	Seg.4	Lap Time	km/h	Local Time
		45.432	31.627	54.695			13:34'27.920
1	1'24.553	38.390	29.257	26.915	2'59.115P		13:37'27.035
2	26.075	36.955	28.124	26.115	1'57.269	202,9	13:39'24.304
3	25.750	36.832	28.122	26.303	1'57.007	208,8	13:41'21.311
4	25.662	36.638	28.213	26.186	1'56.699	208,0	13:43'18.010
5	25.797	37.489	29.703	47.738	2'20.727P	206,8	13:45'38.737
6	58.968	37.134	28.121	26.023	2'30.246P		13:48'08.983
7	25.461	37.000	<b>27.675</b>	<b>25.841</b>	1'55.977	210,4	13:50'04.960
8	<b>25.411</b>	<b>36.546</b>	27.862	25.875	<b>1'55.694</b>	<b>212,5</b>	13:52'00.654
9	25.561	36.992	28.826	25.926	1'57.305	210,8	13:53'57.959
10	25.688	39.874	32.892	49.833	2'28.287P		



Portimao 4.492 m

**Pirelli Portuguese Round, 27-29 March 2026  
Chronological Analysis Tissot Superpole**

19° 22 M. GUARINO [1'56.086]							
Lap	Seg.1	Seg.2	Seg.3	Seg.4	Lap Time	km/h	Local Time
1	1'20.664	38.984	29.617	26.681	2'55.946P		13:36'34.082
2	26.058	38.341	28.791	26.127	1'59.317	208,0	13:38'33.399
3	26.076	37.063	28.283	26.172	1'57.594	204,8	13:40'30.993
4	27.445	37.347	28.461	26.177	1'59.430	208,0	13:42'30.423
5	26.335	38.538	28.273	25.933	1'59.079	206,0	13:44'29.502
6	25.330	37.570	28.098	25.938	1'56.936	208,8	13:46'26.438
7	25.433	36.945	28.596	<b>25.558</b>	1'56.532	210,4	13:48'22.970
8	25.517	37.623	28.206	25.948	1'57.294	<b>222,0</b>	13:50'20.264
9	<b>25.006</b>	37.342	28.135	25.615	1'56.098	217,2	13:52'16.362
10	25.223	<b>36.927</b>	28.374	25.562	<b>1'56.086</b>	214,2	13:54'12.448
11	25.185	37.447	<b>28.017</b>	25.714	1'56.363	213,3	13:56'08.811

20° 14 M. DOBBS [1'56.093]							
Lap	Seg.1	Seg.2	Seg.3	Seg.4	Lap Time	km/h	Local Time
1	25.884	37.233	28.463	25.952	1'57.532	209,6	13:34'49.607
2	25.851	37.091	28.327	25.787	1'57.056	211,2	13:36'46.663
3	25.645	37.096	28.481	<b>25.746</b>	1'56.968	209,6	13:38'43.631
4	25.911	37.171	28.202	26.169	1'57.453	206,4	13:40'41.084
5	25.924	37.219	28.521	26.239	1'57.903	207,6	13:42'38.987
6	25.671	<b>36.841</b>	27.931	25.891	1'56.334	210,0	13:44'35.321
7	<b>25.388</b>	36.978	<b>27.904</b>	25.823	<b>1'56.093</b>	<b>211,6</b>	13:46'31.414
8	25.609	37.259	28.386	49.175	2'20.429P	211,2	13:48'51.843
9	2'53.025	37.660	28.343	26.097	4'25.125P		13:53'16.968
10	25.796	37.038	28.302	26.006	1'57.142	209,2	13:55'14.110

21° 19 A. DUREDNICKOVA [1'56.274]							
Lap	Seg.1	Seg.2	Seg.3	Seg.4	Lap Time	km/h	Local Time
1	27.795	38.927	29.648	26.700	2'03.070	212,9	13:35'03.697
2	26.114	37.456	28.924	26.384	1'58.878	210,8	13:37'02.575
3	26.237	37.428	28.567	26.232	1'58.464	209,2	13:39'01.039
4	28.876	44.027	28.860	26.171	2'07.934	207,6	13:41'08.973
5	25.713	37.261	28.462	25.951	1'57.387	212,5	13:43'06.360
6	25.563	37.001	28.404	26.053	1'57.021	211,2	13:45'03.381
7	25.438	36.840	28.239	25.757	<b>1'56.274</b>	213,3	13:46'59.655
8	25.749	37.353	28.396	25.991	1'57.489	212,5	13:48'57.144
9	<b>25.396</b>	37.007	28.194	25.837	1'56.434	212,9	13:50'53.578
10	25.442	<b>36.761</b>	28.555	<b>25.739</b>	1'56.497	212,9	13:52'50.075
11	25.693	37.313	28.453	26.063	1'57.522C	<b>217,2</b>	13:54'47.597
12	25.565	37.105	<b>28.178</b>	26.025	1'56.873	209,6	13:56'44.470

22° 41 A. BARALE [1'56.395]							
Lap	Seg.1	Seg.2	Seg.3	Seg.4	Lap Time	km/h	Local Time
1	27.524	38.862	32.181	27.978			13:33'01.747
2	25.784	39.853	29.059	26.779	2'03.215	213,7	13:35'04.962
3	25.811	37.678	29.221	26.573	1'59.256	213,3	13:37'04.218
4	25.811	37.336	28.434	25.792	1'57.373	213,7	13:39'01.591
5	25.763	38.106	31.623	26.085	2'01.577	210,0	13:41'03.168
6	25.547	<b>37.144</b>	28.470	25.677	1'56.838	212,9	13:43'00.006
7	25.308	37.319	<b>28.092</b>	25.676	<b>1'56.395</b>	211,2	13:44'56.401
8	25.389	37.417	28.588	53.626	2'25.020P	211,6	13:47'21.421
9	1'24.087	39.492	29.049	26.037	2'58.665P		13:50'20.086
10	26.006	37.316	28.545	25.806	1'57.673	<b>214,2</b>	13:52'17.759
11	25.586	37.390	28.142	<b>25.645</b>	1'56.763	213,3	13:54'14.522
12	<b>25.306</b>	37.612	28.263	25.895	1'57.076	<b>214,2</b>	13:56'11.598

23° 26 K. HAND [1'56.818]							
Lap	Seg.1	Seg.2	Seg.3	Seg.4	Lap Time	km/h	Local Time

1	26.350	40.203	31.203	34.151	1'59.510	208,4	13:33'17.572
2	26.242	37.805	29.072	26.283	26.283	<b>210,8</b>	13:37'15.865
3	25.785	37.452	28.822	26.267	1'58.783		13:39'13.545
4	25.830	37.220	28.695	25.980	1'57.680	210,0	13:41'11.565
5	25.713	37.227	28.802	26.161	1'58.020	209,6	13:43'08.688
6	25.713	36.920	28.400	26.090	1'57.123	210,0	13:45'35.899
7	1'38.546	44.191	29.217	48.085	2'27.211P	209,6	13:48'55.397
8	25.708	44.828	29.554	26.570	3'19.498P		13:50'52.797
9	25.678	37.266	28.456	25.970	1'57.400	208,8	13:52'49.830
10	26.506	37.024	28.475	<b>25.856</b>	1'57.033	209,2	13:54'54.808
11	<b>25.600</b>	43.138	29.095	26.239	2'04.978	210,4	13:56'51.626
		<b>36.892</b>	<b>28.293</b>	26.033	<b>1'56.818</b>	208,8	

24° 44 P. SOWA [1'57.284]							
Lap	Seg.1	Seg.2	Seg.3	Seg.4	Lap Time	km/h	Local Time
1	27.744	39.570	32.341	28.072			13:33'01.317
2	25.987	38.900	29.517	27.092	2'03.253	<b>216,3</b>	13:35'04.570
3	26.757	37.708	29.091	26.730	1'59.516	214,6	13:37'04.086
4	26.757	37.702	29.066	26.607	2'00.192	212,1	13:39'04.278
5	25.795	37.782	29.981	26.494	2'00.052	212,5	13:41'04.330
6	25.911	37.349	28.907	26.345	1'58.395	213,7	13:43'02.725
7	25.726	37.492	28.723	26.277	1'58.218	212,5	13:45'00.943
8	25.763	37.573	28.628	26.348	1'58.312	213,3	13:46'59.255
9	25.829	38.123	28.856	26.099	1'58.907	211,6	13:48'58.162
10	25.575	37.221	28.412	<b>26.076</b>	<b>1'57.284</b>	215,4	13:50'55.446
11	25.525	37.134	28.494	26.154	1'57.307	214,6	13:52'52.753
12	<b>25.505</b>	37.521	28.763	26.209	1'57.998C	214,6	13:54'50.751
	25.580	<b>37.088</b>	<b>28.262</b>	26.407	1'57.337	211,6	13:56'48.088

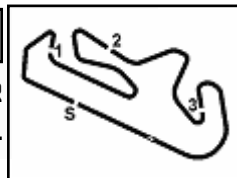
25° 16 L. MICHEL [1'58.489]							
Lap	Seg.1	Seg.2	Seg.3	Seg.4	Lap Time	km/h	Local Time
1	26.617	39.321	29.545	26.877			13:32'22.384
2	25.832	38.176	42.765	28.975	2'16.533	213,3	13:34'38.917
3	25.946	<b>37.453</b>	29.808	<b>26.142</b>	1'59.235	216,7	13:36'38.152
4	<b>25.812</b>	37.469	<b>28.338</b>	<b>26.736</b>	<b>1'58.489</b>	<b>219,8</b>	13:38'36.641
		41.884	37.175	48.814	2'33.685P	213,3	13:41'10.326

27/03/2026 P = Pits In/Out - C = Lap Time Cancelled

These data/results cannot be reproduced, stored and/or transmitted in whole or in part by any manner of electronic, mechanical, photocopying, recording, broadcasting or otherwise now known or herein after developed without the previous express consent by the copyright owner, except for reproduction in daily press and regular printed publications on sale to the public within 60 days of the event related to those data/results and always provided that copyright symbol appears together as follows below.

© DORNA WSBK ORGANIZATION Srl 2026





Portimao 4.492 m

**Pirelli Portuguese Round, 27-29 March 2026**  
**Best Laps & Speeds**

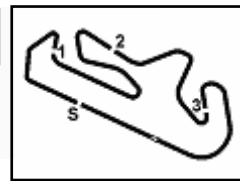
No.	Rider Bike	Nat	Best Lap		FP		SP										
			LL	SPD	LL	SPD	LL	SPD									
1	<b>6 M. HERRERA</b> Yamaha YZF-R7	ESP	<b>1'52.572</b> 21 223,0		1'53.838 10 221,1		<b>1'52.572</b> 11 <b>223,0</b>										
2	<b>58 P. RAMOS</b> Yamaha YZF-R7	ESP	<b>1'52.988</b> 18 220,7		1'53.567 9 <b>220,7</b>		<b>1'52.988</b> 9 216,3										
3	<b>96 R. PONZIANI</b> Yamaha YZF-R7	ITA	<b>1'53.710</b> 20 220,2		1'54.491 10 <b>220,2</b>		<b>1'53.710</b> 10 <b>220,2</b>										
4	<b>36 B. NEILA</b> Yamaha YZF-R7	ESP	<b>1'54.141</b> 19 213,7		1'55.573 10 213,3		<b>1'54.141</b> 9 <b>213,7</b>										
5	<b>11 Y. CERPA</b> Yamaha YZF-R7	ESP	<b>1'54.149</b> 21 222,5		1'55.020 11 219,4		<b>1'54.149</b> 10 <b>222,5</b>										
6	<b>8 T. RELPH</b> Yamaha YZF-R7	AUS	<b>1'54.253</b> 21 217,6		1'55.807 10 <b>217,6</b>		<b>1'54.253</b> 11 217,2										
7	<b>94 L. BOUDESSEUL</b> Yamaha YZF-R7	FRA	<b>1'54.309</b> 19 220,2		1'54.962 10 <b>220,2</b>		<b>1'54.309</b> 9 218,5										
8	<b>64 S. SANCHEZ</b> Yamaha YZF-R7	ESP	<b>1'54.324</b> 23 224,8		1'55.523 12 <b>224,8</b>		<b>1'54.324</b> 11 217,6										
9	<b>46 P. RUIZ</b> Yamaha YZF-R7	ESP	<b>1'54.477</b> 20 218,9		1'55.055 10 <b>218,9</b>		<b>1'54.477</b> 10 211,2										
10	<b>20 N. RIVERA</b> Yamaha YZF-R7	ESP	<b>1'54.727</b> 23 223,9		1'55.270 12 <b>223,9</b>		<b>1'54.727</b> 11 214,6										
11	<b>83 A. MADRIGAL</b> Yamaha YZF-R7	MEX	<b>1'54.732</b> 18 223,0		1'54.950 9 <b>223,0</b>		<b>1'54.732</b> 9 222,5										
12	<b>4 E. BONDI</b> Yamaha YZF-R7	FRA	<b>1'54.791</b> 17 222,5		1'56.655 6 217,2		<b>1'54.791</b> 11 <b>222,5</b>										
13	<b>12 M. SARAPUECH</b> Yamaha YZF-R7	THA	<b>1'54.926</b> 18 220,2		1'56.009 9 218,5		<b>1'54.926</b> 9 <b>220,2</b>										
14	<b>15 C. JONES</b> Yamaha YZF-R7	GBR	<b>1'55.126</b> 22 219,8		1'56.039 11 <b>219,8</b>		<b>1'55.126</b> 11 215,4										
15	<b>37 L. VIEILLARD</b> Yamaha YZF-R7	FRA	<b>1'55.205</b> 21 219,8		1'58.285 10 <b>219,8</b>		<b>1'55.205</b> 11 219,4										
16	<b>66 K. DANAK</b> Yamaha YZF-R7	POL	<b>1'55.345</b> 21 221,6		1'55.759 11 217,6		<b>1'55.345</b> 10 <b>221,6</b>										
17	<b>99 I. CARRENO</b> Yamaha YZF-R7	CHI	<b>1'55.348</b> 19 220,2		1'57.361 10 <b>220,2</b>		<b>1'55.348</b> 9 215,9										
18	<b>88 D. DALZOTTO</b> Yamaha YZF-R7	ITA	<b>1'55.694</b> 22 221,1		1'56.670 12 <b>221,1</b>		<b>1'55.694</b> 10 212,5										
19	<b>22 M. GUARINO</b> Yamaha YZF-R7	ITA	<b>1'56.086</b> 19 222,0		1'58.128 8 219,8		<b>1'56.086</b> 11 <b>222,0</b>										
20	<b>14 M. DOBBS</b> Yamaha YZF-R7	USA	<b>1'56.093</b> 21 223,4		1'56.679 11 <b>223,4</b>		<b>1'56.093</b> 10 211,6										
21	<b>19 A. OUREDNIKOVA</b> Yamaha YZF-R7	CZE	<b>1'56.274</b> 24 223,0		1'56.685 12 <b>223,0</b>		<b>1'56.274</b> 12 217,2										
22	<b>41 A. BARALE</b> Yamaha YZF-R7	ITA	<b>1'56.395</b> 23 221,6		1'57.526 12 <b>221,6</b>		<b>1'56.395</b> 11 214,2										
23	<b>26 K. HAND</b> Yamaha YZF-R7	GBR	<b>1'56.818</b> 22 216,3		1'56.853 11 <b>216,3</b>		<b>1'56.818</b> 11 210,8										
24	<b>44 P. SOWA</b> Yamaha YZF-R7	POL	<b>1'57.284</b> 23 219,8		1'58.219 11 <b>219,8</b>		<b>1'57.284</b> 12 216,3										
25	<b>16 L. MICHEL</b> Yamaha YZF-R7	GER	<b>1'58.004</b> 15 219,8		<b>1'58.004</b> 11 219,4		1'58.489 4 <b>219,8</b>										

27/03/2026

These data/results cannot be reproduced, stored and/or transmitted in whole or in part by any manner of electronic, mechanical, photocopying, recording, broadcasting or otherwise now known or herein after developed without the previous express consent by the copyright owner, except for reproduction in daily press and regular printed publications on sale to the public within 60 days of the event related to those data/results and always provided that copyright symbol appears together as follows below.

© DORNA WSBK ORGANIZATION Srl 2026





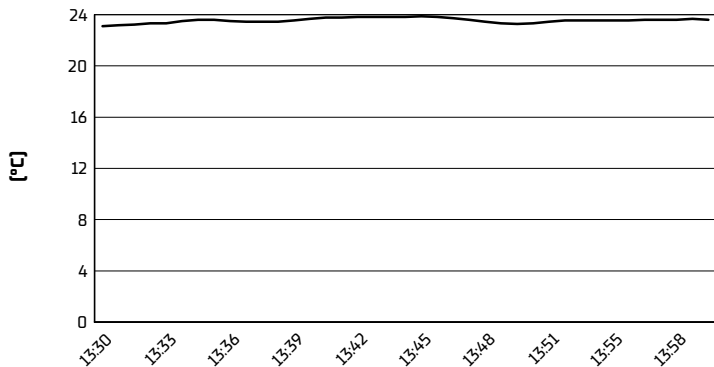
Portimao 4.492 m

**Pirelli Portuguese Round, 27-29 March 2026**

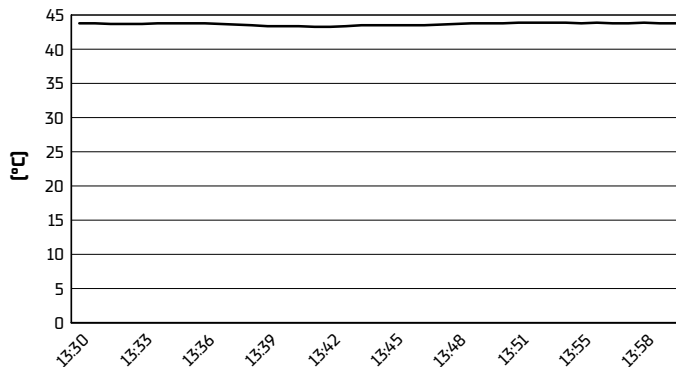
**Weather Report Tissot Superpole**

Session started 13:30 - Session ended 13:59

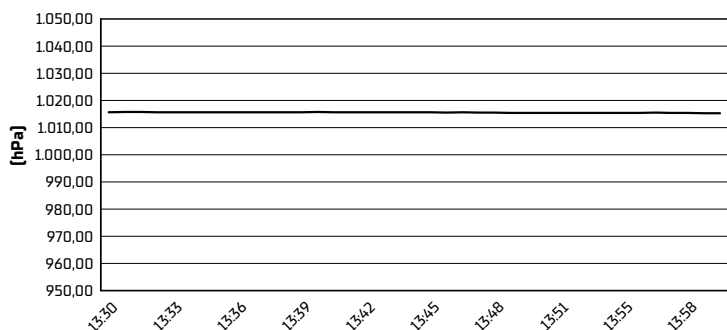
**Air Temperature**



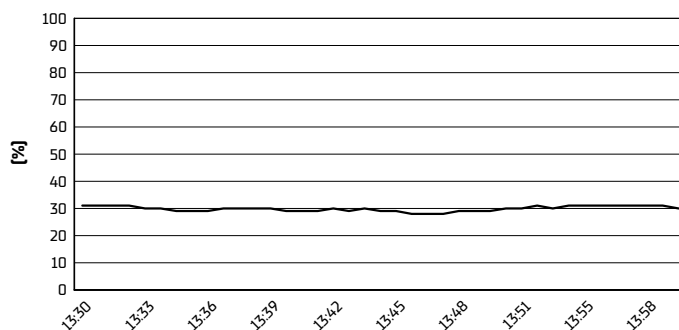
**Track Temperature**



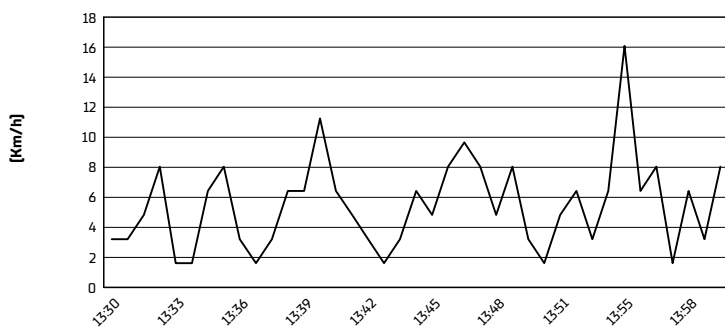
**Air Pressure**



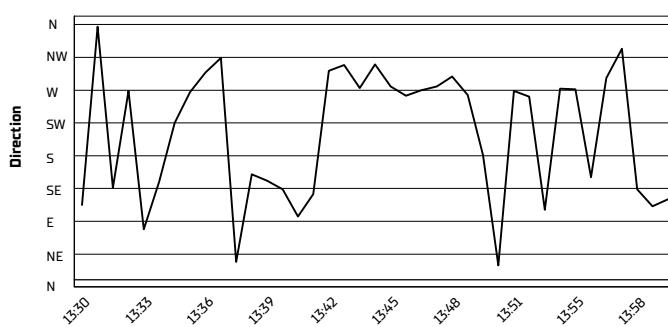
**Humidity**



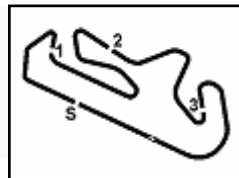
**Wind Speed**



**Wind Direction**



27/03/2026  
These data/results cannot be reproduced, stored and/or transmitted in whole or in part by any manner of electronic, mechanical, photocopying, recording, broadcasting or otherwise now known or herein after developed without the previous express consent by the copyright owner, except for reproduction in daily press and regular printed publications on sale to the public within 60 days of the event related to those data/results and always provided that copyright symbol appears together as follows below.  
© DORNA WSBK ORGANIZATION Srl 2026



Portimao 4.492 m

**Pirelli Portuguese Round, 27-29 March 2026**  
**Tissot Superpole Ranking**

	2024	2025	2026
<b>01 Portimao</b>	Herrera [Esp] Yam 1'54.609 [144,2 Km/h]		Herrera [Esp] Yam 1'52.572 [146,9 Km/h]
<b>02 Assen</b>		Herrera [Esp] Yam 1'48.146 [151,2 Km/h]	
<b>03 Balaton</b>		Neila [Esp] Yam 1'53.526 [129,2 Km/h]	
<b>04 Misano</b>	Herrera [Esp] Yam 1'49.390 [139,1 Km/h]		
<b>05 Donington</b>	Carrasco [Esp] Yam 1'40.581 [144,0 Km/h]	Neila [Esp] Yam 1'39.687 [145,3 Km/h]	
<b>06 Jerez</b>	Sanchez [Esp] Yam 1'51.671 [142,6 Km/h]	Herrera [Esp] Yam 1'51.572 [142,7 Km/h]	

**2026**

**1 M. Herrera**

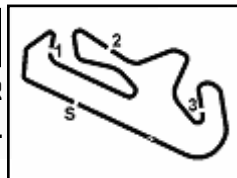
**ALL TIMES**

- 7 M. Herrera**
- 2 A. Carrasco**
- 2 B. Neila**
- 1 C. Jones**
- 1 S. Sanchez**

27/03/2026

These data/results cannot be reproduced, stored and/or transmitted in whole or in part by any manner of electronic, mechanical, photocopying, recording, broadcasting or otherwise now known or herein after developed without the previous express consent by the copyright owner, except for reproduction in daily press and regular printed publications on sale to the public within 60 days of the event related to those data/results and always provided that copyright symbol appears together as follows below.

© DORNA WSBK ORGANIZATION Srl 2026



Portimao 4.492 m

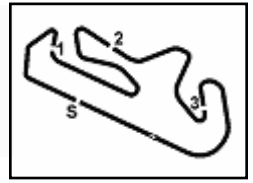
**Pirelli Portuguese Round, 27-29 March 2026**  
**Tissot Superpole Award**

	Points	Points From First	Points From Previous	March 29 <b>PORTIMAO</b>	April 19 <b>ASSEN</b>	May 3 <b>BALATON</b>	June 14 <b>MISANO</b>	July 12 <b>DONINGTON</b>	October 18 <b>JEREZ</b>									
1 <b>HERRERA</b> Maria (ESP)	12			12														
2 <b>RAMOS</b> Paola (ESP)	9	3		9														
3 <b>PONZIANI</b> Roberta (ITA)	7	5	2	7														
4 <b>NEILA</b> Beatriz (ESP)	6	6	1	6														
5 <b>CERPA</b> Yvonne (ESP)	5	7	1	5														
6 <b>RELPH</b> Tayla (AUS)	4	8	1	4														
7 <b>BOUDESSEUL</b> Lucie (FRA)	3	9	1	3														
8 <b>SANCHEZ</b> Sara (ESP)	2	10	1	2														
9 <b>RUIZ</b> Pakita (ESP)	1	11	1	1														

27/03/2026 Odd points columns: Tissot Superpole Even points columns: Tissot Superpole Race

These data/results cannot be reproduced, stored and/or transmitted in whole or in part by any manner of electronic, mechanical, photocopying, recording, broadcasting or otherwise now known or herein after developed without the previous express consent by the copyright owner, except for reproduction in daily press and regular printed publications on sale to the public within 60 days of the event related to those data/results and always provided that copyright symbol appears together as follows below.

© DORNA WSBK ORGANIZATION Srl 2026



Portimao 4.492 m

**Pirelli Portuguese Round, 27-29 March 2026**  
**Provisional Starting Grid - Race 1 (11 Laps x 4,492 km = 49,412 km)**

1	1	<b>6</b> HERRERA M. Yamaha 1'52.572	2	<b>58</b> RAMOS P. Yamaha 1'52.988	3	<b>96</b> PONZIANI R. Yamaha 1'53.710
2	4	<b>36</b> NEILA B. Yamaha 1'54.141	5	<b>11</b> CERPA Y. Yamaha 1'54.149	6	<b>8</b> RELPH T. Yamaha 1'54.253
3	7	<b>94</b> BOUDESSEUL L. Yamaha 1'54.309	8	<b>64</b> SANCHEZ S. Yamaha 1'54.324	9	<b>46</b> RUIZ P. Yamaha 1'54.477
4	10	<b>20</b> RIVERA N. Yamaha 1'54.727	11	<b>83</b> MADRIGAL A. Yamaha 1'54.732	12	<b>4</b> BONDI E. Yamaha 1'54.791
5	13	<b>12</b> SARAPUECH M. Yamaha 1'54.926	14	<b>15</b> JONES C. Yamaha 1'55.126	15	<b>37</b> VIEILLARD L. Yamaha 1'55.205
6	16	<b>66</b> DANAK K. Yamaha 1'55.345	17	<b>99</b> CARRENO I. Yamaha 1'55.348	18	<b>88</b> DAL ZOTTO D. Yamaha 1'55.694
7	19	<b>22</b> GUARINO M. Yamaha 1'56.086	20	<b>14</b> DOBBS M. Yamaha 1'56.093	21	<b>19</b> OUREDICKOVA A. Yamaha 1'56.274
8	22	<b>41</b> BARALE A. Yamaha 1'56.395	23	<b>26</b> HAND K. Yamaha 1'56.818	24	<b>44</b> SOWA P. Yamaha 1'57.284
9	25	<b>16</b> MICHEL L. Yamaha 1'58.489				

27/03/2026 The Race Director: **Stefano Carloia**

These data/results cannot be reproduced, stored and/or transmitted in whole or in part by any manner of electronic, mechanical, photocopying, recording, broadcasting or otherwise now known or herein after developed without the previous express consent by the copyright owner, except for reproduction in daily press and regular printed publications on sale to the public within 60 days of the event related to those data/results and always provided that copyright symbol appears together as follows below. © DORNA WSBK ORGANIZATION Srl 2026