

Portimao 4.492 m

1 / 2

**Pirelli Portuguese Round, 27-29 March 2026**  
**Results Warm Up 1**

No.	Rider	Nat	Team	Bike	Time	Gap	Rel.	Laps	Speed	
									Avg	Max
1	<b>6 M. HERRERA</b>	ESP	Terra & Vita GRT Yamaha WorldWCR	Yamaha YZF-R7	<b>1'52.885</b>			4	143,254	<b>218,5</b>
2	<b>11 Y. CERPA</b>	ESP	MotosCerpa	Yamaha YZF-R7	<b>1'54.565</b>	1.680	1.680	4	141,153	<b>221,1</b>
3	<b>64 S. SANCHEZ</b>	ESP	Hadden Racing Team	Yamaha YZF-R7	<b>1'54.572</b>	1.687	0.007	4	141,144	<b>219,4</b>
4	<b>96 R. PONZIANI</b>	ITA	Klint Racing Team	Yamaha YZF-R7	<b>1'54.585</b>	1.700	0.013	4	141,128	<b>219,4</b>
5	<b>94 L. BOUDESSEUL</b>	FRA	GMT94 Yamaha	Yamaha YZF-R7	<b>1'54.800</b>	1.915	0.215	4	140,864	<b>223,0</b>
6	<b>15 C. JONES</b>	GBR	Monster Energy Crescent Yamaha	Yamaha YZF-R7	<b>1'54.877</b>	1.992	0.077	4	140,770	<b>221,1</b>
7	<b>4 E. BONDI</b>	FRA	FT Racing Academy	Yamaha YZF-R7	<b>1'54.955</b>	2.070	0.078	4	140,674	<b>229,6</b>
8	<b>58 P. RAMOS</b>	ESP	Klint Racing Team	Yamaha YZF-R7	<b>1'55.005</b>	2.120	0.050	2	140,613	<b>218,9</b>
9	<b>66 K. DANAK</b>	POL	Yamaha AD78 FIMLA	Yamaha YZF-R7	<b>1'55.008</b>	2.123	0.003	4	140,609	<b>219,4</b>
10	<b>36 B. NEILA</b>	ESP	Ampito Crescent Yamaha	Yamaha YZF-R7	<b>1'55.244</b>	2.359	0.236	4	140,321	<b>220,2</b>
11	<b>46 P. RUIZ</b>	ESP	PR46+1 Racing Team	Yamaha YZF-R7	<b>1'55.359</b>	2.474	0.115	4	140,182	<b>221,6</b>
12	<b>83 A. MADRIGAL</b>	MEX	Pons Italika Racing FIMLA	Yamaha YZF-R7	<b>1'55.360</b>	2.475	0.001	4	140,180	<b>225,3</b>
13	<b>8 T. RELPH</b>	AUS	Full Throttle Racing	Yamaha YZF-R7	<b>1'55.457</b>	2.572	0.097	2	140,063	<b>219,4</b>
14	<b>20 N. RIVERA</b>	ESP	Terra & Vita GRT Yamaha WorldWCR	Yamaha YZF-R7	<b>1'55.757</b>	2.872	0.300	4	139,700	<b>217,2</b>
15	<b>99 I. CARRENO</b>	CHI	Pons Italika Racing FIMLA	Yamaha YZF-R7	<b>1'55.857</b>	2.972	0.100	4	139,579	<b>222,5</b>
16	<b>14 M. DOBBS</b>	USA	YVS Sabadell Diva Racing	Yamaha YZF-R7	<b>1'56.418</b>	3.533	0.561	4	138,906	<b>214,2</b>
17	<b>22 M. GUARINO</b>	ITA	Prata Motor Sport	Yamaha YZF-R7	<b>1'56.433</b>	3.548	0.015	4	138,888	<b>219,8</b>
18	<b>26 K. HAND</b>	GBR	Team Trasimeno	Yamaha YZF-R7	<b>1'56.453</b>	3.568	0.020	4	138,865	<b>218,9</b>
19	<b>37 L. VIEILLARD</b>	FRA	FT Racing Academy	Yamaha YZF-R7	<b>1'56.693</b>	3.808	0.240	4	138,579	<b>220,7</b>
20	<b>88 D. DAL ZOTTO</b>	ITA	PATA AG Motorsport Italia	Yamaha YZF-R7	<b>1'56.756</b>	3.871	0.063	4	138,504	<b>221,1</b>
21	<b>16 L. MICHEL</b>	GER	TSL-Racing	Yamaha YZF-R7	<b>1'56.844</b>	3.959	0.088	4	138,400	<b>218,9</b>
22	<b>12 M. SARAPUECH</b>	THA	EEST NJT Racing Team	Yamaha YZF-R7	<b>1'57.460</b>	4.575	0.616	2	137,674	<b>215,0</b>
23	<b>19 A. OUREDNIKOVA</b>	CZE	Dafitmotoracing	Yamaha YZF-R7	<b>1'57.478</b>	4.593	0.018	4	137,653	<b>220,2</b>
24	<b>41 A. BARALE</b>	ITA	Hadden Racing Team	Yamaha YZF-R7	<b>1'57.962</b>	5.077	0.484	4	137,088	<b>217,2</b>
25	<b>44 P. SOWA</b>	POL	Team Trasimeno	Yamaha YZF-R7	<b>1'58.599</b>	5.714	0.637	4	136,352	<b>218,5</b>

**Qualifying Lap Time (110% of 1'52.885): 2'04.174**

AIR	Humidity:	71%	Temp:	17°C
TRACK	Condition:	Dry	Temp:	23°C

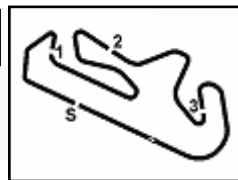
Records	Pole	[SP]	2026	M.Herrera	1'52.572	143,650	Km/h
	Race	[RC1]	2024	S.Sanchez	1'53.691	142,240	Km/h
	All Times	[SP]	2026	M.Herrera	1'52.572	143,650	Km/h

Start 09:00 End 09:13 The results are provisional until the end of the time limit for protests and appeals and the completion of the technical checks.

Clerk Of The Course: **Beatriz Aguas**  
Publication Time: **09:17**

These data/results cannot be reproduced, stored and/or transmitted in whole or in part by any manner of electronic, mechanical, photocopying, recording, broadcasting or otherwise now known or herein after developed without the previous express consent by the copyright owner, except for reproduction in daily press and regular printed publications on sale to the public within 60 days of the event related to those data/results and always provided that copyright symbol appears together as follows below.

© DORNA WSBK ORGANIZATION Srl 2026



**Pirelli Portuguese Round, 27-29 March 2026**  
**Results Warm Up 1**

**Session Highlights**

Local Time	No. Rider	Description
08.32.00		Start of Session
09.00.00		Start of Session
09.13.01		End of Session

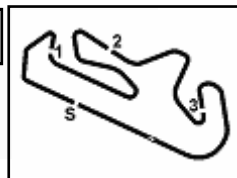
**Fastest Laps Sequence**

No.	Rider	Nat	Team	Bike	Local Time	Time	Gap	Avg
44	P. <b>SOWA</b>	POL	Team Trasimeno	Yamaha YZF-R7	09:04'43.659	<b>1'59.504</b>		135,319
37	L. <b>VIEILLARD</b>	FRA	FT Racing Academy	Yamaha YZF-R7	09:04'43.879	<b>1'57.742</b>	-1.762	137,344
66	K. <b>DANAK</b>	POL	Yamaha AD78 FIMLA	Yamaha YZF-R7	09:04'45.733	<b>1'55.538</b>	-2.204	139,964
11	Y. <b>CERPA</b>	ESP	MotosCerpa	Yamaha YZF-R7	09:05'46.447	<b>1'55.038</b>	-0.500	140,573
6	M. <b>HERRERA</b>	ESP	Terra & Vita GRT Yamaha WorldWCR	Yamaha YZF-R7	09:06'05.301	<b>1'53.704</b>	-1.334	142,222
6	M. <b>HERRERA</b>	ESP	Terra & Vita GRT Yamaha WorldWCR	Yamaha YZF-R7	09:07'58.186	<b>1'52.885</b>	-0.819	143,254

28/03/2026      Start 09:00      End 09:13      The results are provisional until the end of the time limit for protests and appeals and the completion of the technical checks.      Clerk Of The Course: **Beatriz Aguas**      Publication Time: **09:17**

These data/results cannot be reproduced, stored and/or transmitted in whole or in part by any manner of electronic, mechanical, photocopying, recording, broadcasting or otherwise now known or herein after developed without the previous express consent by the copyright owner, except for reproduction in daily press and regular printed publications on sale to the public within 60 days of the event related to those data/results and always provided that copyright symbol appears together as follows below.

© DORNA WSBK ORGANIZATION Srl 2026



Portimao 4.492 m

**Pirelli Portuguese Round, 27-29 March 2026  
Best Sectors & Speed Warm Up 1**

**BEST LAP**

1	<b>6</b>	<b>M. HERRERA</b>	Yamaha YZF-R7	1'52.885
2	<b>11</b>	<b>Y. CERPA</b>	Yamaha YZF-R7	1'54.565
3	<b>64</b>	<b>S. SANCHEZ</b>	Yamaha YZF-R7	1'54.572
4	<b>96</b>	<b>R. PONZIANI</b>	Yamaha YZF-R7	1'54.585
5	<b>94</b>	<b>L. BOUDESSEUL</b>	Yamaha YZF-R7	1'54.800
6	<b>15</b>	<b>C. JONES</b>	Yamaha YZF-R7	1'54.877
7	<b>4</b>	<b>E. BONDI</b>	Yamaha YZF-R7	1'54.955
8	<b>58</b>	<b>P. RAMOS</b>	Yamaha YZF-R7	1'55.005
9	<b>66</b>	<b>K. DANAK</b>	Yamaha YZF-R7	1'55.008
10	<b>36</b>	<b>B. NEILA</b>	Yamaha YZF-R7	1'55.244
11	<b>46</b>	<b>P. RUIZ</b>	Yamaha YZF-R7	1'55.359
12	<b>83</b>	<b>A. MADRIGAL</b>	Yamaha YZF-R7	1'55.360
13	<b>8</b>	<b>T. RELPH</b>	Yamaha YZF-R7	1'55.457
14	<b>20</b>	<b>N. RIVERA</b>	Yamaha YZF-R7	1'55.757
15	<b>99</b>	<b>I. CARRENO</b>	Yamaha YZF-R7	1'55.857
16	<b>14</b>	<b>M. DOBBS</b>	Yamaha YZF-R7	1'56.418
17	<b>22</b>	<b>M. GUARINO</b>	Yamaha YZF-R7	1'56.433
18	<b>26</b>	<b>K. HAND</b>	Yamaha YZF-R7	1'56.453
19	<b>37</b>	<b>L. VIEILLARD</b>	Yamaha YZF-R7	1'56.693
20	<b>88</b>	<b>D. DAL ZOTTO</b>	Yamaha YZF-R7	1'56.756
21	<b>16</b>	<b>L. MICHEL</b>	Yamaha YZF-R7	1'56.844
22	<b>12</b>	<b>M. SARAPUECH</b>	Yamaha YZF-R7	1'57.460
23	<b>19</b>	<b>A. OUREDNICKOVA</b>	Yamaha YZF-R7	1'57.478
24	<b>41</b>	<b>A. BARALE</b>	Yamaha YZF-R7	1'57.962
25	<b>44</b>	<b>P. SOWA</b>	Yamaha YZF-R7	1'58.599

**SPEED**

1	<b>4</b>	<b>E. BONDI</b>	Yamaha YZF-R7	229,6
2	<b>83</b>	<b>A. MADRIGAL</b>	Yamaha YZF-R7	225,3
3	<b>94</b>	<b>L. BOUDESSEUL</b>	Yamaha YZF-R7	223,0
4	<b>99</b>	<b>I. CARRENO</b>	Yamaha YZF-R7	222,5
5	<b>46</b>	<b>P. RUIZ</b>	Yamaha YZF-R7	221,6
6	<b>88</b>	<b>D. DAL ZOTTO</b>	Yamaha YZF-R7	221,1
7	<b>15</b>	<b>C. JONES</b>	Yamaha YZF-R7	221,1
8	<b>11</b>	<b>Y. CERPA</b>	Yamaha YZF-R7	221,1
9	<b>37</b>	<b>L. VIEILLARD</b>	Yamaha YZF-R7	220,7
10	<b>36</b>	<b>B. NEILA</b>	Yamaha YZF-R7	220,2
11	<b>19</b>	<b>A. OUREDNICKOVA</b>	Yamaha YZF-R7	220,2
12	<b>22</b>	<b>M. GUARINO</b>	Yamaha YZF-R7	219,8
13	<b>66</b>	<b>K. DANAK</b>	Yamaha YZF-R7	219,4
14	<b>8</b>	<b>T. RELPH</b>	Yamaha YZF-R7	219,4
15	<b>64</b>	<b>S. SANCHEZ</b>	Yamaha YZF-R7	219,4
16	<b>96</b>	<b>R. PONZIANI</b>	Yamaha YZF-R7	219,4
17	<b>26</b>	<b>K. HAND</b>	Yamaha YZF-R7	218,9
18	<b>16</b>	<b>L. MICHEL</b>	Yamaha YZF-R7	218,9
19	<b>58</b>	<b>P. RAMOS</b>	Yamaha YZF-R7	218,9
20	<b>6</b>	<b>M. HERRERA</b>	Yamaha YZF-R7	218,5
21	<b>44</b>	<b>P. SOWA</b>	Yamaha YZF-R7	218,5
22	<b>41</b>	<b>A. BARALE</b>	Yamaha YZF-R7	217,2
23	<b>20</b>	<b>N. RIVERA</b>	Yamaha YZF-R7	217,2
24	<b>12</b>	<b>M. SARAPUECH</b>	Yamaha YZF-R7	215,0
25	<b>14</b>	<b>M. DOBBS</b>	Yamaha YZF-R7	214,2

**SEG. 1**

**SEG. 2**

**SEG. 3**

**SEG. 4**

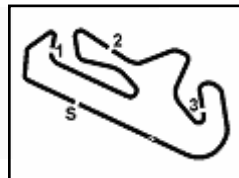
1	<b>6</b>	<b>M. HERRERA</b>	24.657	1	<b>6</b>	<b>M. HERRERA</b>	35.769	1	<b>6</b>	<b>M. HERRERA</b>	27.358	1	<b>94</b>	<b>L. BOUDESSEUL</b>	25.017
2	<b>15</b>	<b>C. JONES</b>	24.781	2	<b>4</b>	<b>E. BONDI</b>	36.229	2	<b>36</b>	<b>B. NEILA</b>	27.784	2	<b>6</b>	<b>M. HERRERA</b>	25.101
3	<b>11</b>	<b>Y. CERPA</b>	24.803	3	<b>46</b>	<b>P. RUIZ</b>	36.302	3	<b>11</b>	<b>Y. CERPA</b>	27.786	3	<b>64</b>	<b>S. SANCHEZ</b>	25.206
4	<b>66</b>	<b>K. DANAK</b>	24.865	4	<b>83</b>	<b>A. MADRIGAL</b>	36.407	4	<b>46</b>	<b>P. RUIZ</b>	27.858	4	<b>58</b>	<b>P. RAMOS</b>	25.224
5	<b>96</b>	<b>R. PONZIANI</b>	24.878	5	<b>36</b>	<b>B. NEILA</b>	36.417	5	<b>66</b>	<b>K. DANAK</b>	27.875	5	<b>96</b>	<b>R. PONZIANI</b>	25.316
6	<b>64</b>	<b>S. SANCHEZ</b>	24.915	6	<b>96</b>	<b>R. PONZIANI</b>	36.442	6	<b>83</b>	<b>A. MADRIGAL</b>	27.877	6	<b>46</b>	<b>P. RUIZ</b>	25.342
7	<b>4</b>	<b>E. BONDI</b>	24.994	7	<b>58</b>	<b>P. RAMOS</b>	36.474	7	<b>96</b>	<b>R. PONZIANI</b>	27.905	7	<b>15</b>	<b>C. JONES</b>	25.403
8	<b>36</b>	<b>B. NEILA</b>	25.050	8	<b>66</b>	<b>K. DANAK</b>	36.488	8	<b>58</b>	<b>P. RAMOS</b>	27.911	8	<b>99</b>	<b>I. CARRENO</b>	25.439
9	<b>46</b>	<b>P. RUIZ</b>	25.054	9	<b>11</b>	<b>Y. CERPA</b>	36.492	9	<b>64</b>	<b>S. SANCHEZ</b>	27.925	9	<b>66</b>	<b>K. DANAK</b>	25.461
10	<b>58</b>	<b>P. RAMOS</b>	25.076	10	<b>64</b>	<b>S. SANCHEZ</b>	36.526	10	<b>94</b>	<b>L. BOUDESSEUL</b>	27.939	10	<b>11</b>	<b>Y. CERPA</b>	25.484
11	<b>94</b>	<b>L. BOUDESSEUL</b>	25.237	11	<b>88</b>	<b>D. DAL ZOTTO</b>	36.570	11	<b>20</b>	<b>N. RIVERA</b>	27.959	11	<b>8</b>	<b>T. RELPH</b>	25.506
12	<b>8</b>	<b>T. RELPH</b>	25.280	12	<b>94</b>	<b>L. BOUDESSEUL</b>	36.607	12	<b>15</b>	<b>C. JONES</b>	27.984	12	<b>4</b>	<b>E. BONDI</b>	25.561
13	<b>99</b>	<b>I. CARRENO</b>	25.319	13	<b>20</b>	<b>N. RIVERA</b>	36.634	13	<b>8</b>	<b>T. RELPH</b>	28.013	13	<b>83</b>	<b>A. MADRIGAL</b>	25.565
14	<b>26</b>	<b>K. HAND</b>	25.328	14	<b>99</b>	<b>I. CARRENO</b>	36.653	14	<b>4</b>	<b>E. BONDI</b>	28.048	14	<b>20</b>	<b>N. RIVERA</b>	25.599
15	<b>14</b>	<b>M. DOBBS</b>	25.367	15	<b>8</b>	<b>T. RELPH</b>	36.658	15	<b>14</b>	<b>M. DOBBS</b>	28.185	15	<b>22</b>	<b>M. GUARINO</b>	25.610
16	<b>37</b>	<b>L. VIEILLARD</b>	25.369	16	<b>15</b>	<b>C. JONES</b>	36.709	16	<b>22</b>	<b>M. GUARINO</b>	28.235	16	<b>19</b>	<b>A. OUREDNICKOVA</b>	25.688
17	<b>12</b>	<b>M. SARAPUECH</b>	25.382	17	<b>26</b>	<b>K. HAND</b>	36.858	17	<b>16</b>	<b>L. MICHEL</b>	28.277	17	<b>36</b>	<b>B. NEILA</b>	25.694
18	<b>41</b>	<b>A. BARALE</b>	25.386	18	<b>37</b>	<b>L. VIEILLARD</b>	36.882	18	<b>12</b>	<b>M. SARAPUECH</b>	28.308	18	<b>41</b>	<b>A. BARALE</b>	25.801
19	<b>20</b>	<b>N. RIVERA</b>	25.387	19	<b>14</b>	<b>M. DOBBS</b>	37.000	19	<b>26</b>	<b>K. HAND</b>	28.331	19	<b>12</b>	<b>M. SARAPUECH</b>	25.820
20	<b>83</b>	<b>A. MADRIGAL</b>	25.511	20	<b>16</b>	<b>L. MICHEL</b>	37.017	20	<b>37</b>	<b>L. VIEILLARD</b>	28.378	20	<b>14</b>	<b>M. DOBBS</b>	25.820
21	<b>22</b>	<b>M. GUARINO</b>	25.531	21	<b>22</b>	<b>M. GUARINO</b>	37.044	21	<b>99</b>	<b>I. CARRENO</b>	28.446	21	<b>37</b>	<b>L. VIEILLARD</b>	25.858
22	<b>16</b>	<b>L. MICHEL</b>	25.554	22	<b>19</b>	<b>A. OUREDNICKOVA</b>	37.287	22	<b>88</b>	<b>D. DAL ZOTTO</b>	28.492	22	<b>88</b>	<b>D. DAL ZOTTO</b>	25.932
23	<b>88</b>	<b>D. DAL ZOTTO</b>	25.583	23	<b>12</b>	<b>M. SARAPUECH</b>	37.546	23	<b>19</b>	<b>A. OUREDNICKOVA</b>	28.634	23	<b>26</b>	<b>K. HAND</b>	25.936
24	<b>19</b>	<b>A. OUREDNICKOVA</b>	25.602	24	<b>44</b>	<b>P. SOWA</b>	37.707	24	<b>41</b>	<b>A. BARALE</b>	28.749	24	<b>16</b>	<b>L. MICHEL</b>	25.946
25	<b>44</b>	<b>P. SOWA</b>	25.768	25	<b>41</b>	<b>A. BARALE</b>	37.785	25	<b>44</b>	<b>P. SOWA</b>	28.907	25	<b>44</b>	<b>P. SOWA</b>	26.103

28/03/2026

These data/results cannot be reproduced, stored and/or transmitted in whole or in part by any manner of electronic, mechanical, photocopying, recording, broadcasting or otherwise now known or herein after developed without the previous express consent by the copyright owner, except for reproduction in daily press and regular printed publications on sale to the public within 60 days of the event related to those data/results and always provided that copyright symbol appears together as follows below.

© DORNA WSBK ORGANIZATION Srl 2026





Portimao 4.492 m

**Pirelli Portuguese Round, 27-29 March 2026**  
**Ideal Times Warm Up 1**

No.	Rider	Nat	Bike	Seg. 1	Seg. 2	Seg. 3	Seg. 4	Ideal Time			
				Diff. 1	Diff. 2	Diff. 3	Diff. 4	Best Lap	Pos.	Diff.	
1	<b>6 M. HERRERA</b>	ESP	Yamaha YZF-R7	<b>24.657</b>	<b>35.769</b>	<b>27.358</b>	25.101	<b>1'52.885</b>	1'52.885	1	
2	<b>96 R. PONZIANI</b>	ITA	Yamaha YZF-R7	24.878 +0.044	36.442	27.905	25.316	<b>1'54.541</b>	1'54.585	4	0.044
3	<b>46 P. RUIZ</b>	ESP	Yamaha YZF-R7	25.054	36.302	27.858 +0.722	25.342 +0.081	<b>1'54.556</b>	1'55.359	11	0.803
4	<b>11 Y. CERPA</b>	ESP	Yamaha YZF-R7	24.803	36.492	27.786	25.484	<b>1'54.565</b>	1'54.565	2	
5	<b>64 S. SANCHEZ</b>	ESP	Yamaha YZF-R7	24.915	36.526	27.925	25.206	<b>1'54.572</b>	1'54.572	3	
6	<b>58 P. RAMOS</b>	ESP	Yamaha YZF-R7	25.076	36.474	27.911	25.224 +0.320	<b>1'54.685</b>	1'55.005	8	0.320
7	<b>66 K. DANAK</b>	POL	Yamaha YZF-R7	24.865	36.488	27.875	25.461 +0.319	<b>1'54.689</b>	1'55.008	9	0.319
8	<b>94 L. BOUDESSEUL</b>	FRA	Yamaha YZF-R7	25.237	36.607	27.939	<b>25.017</b>	<b>1'54.800</b>	1'54.800	5	
9	<b>4 E. BONDI</b>	FRA	Yamaha YZF-R7	24.994	36.229	28.048	25.561 +0.123	<b>1'54.832</b>	1'54.955	7	0.123
10	<b>15 C. JONES</b>	GBR	Yamaha YZF-R7	24.781	36.709	27.984	25.403	<b>1'54.877</b>	1'54.877	6	
11	<b>36 B. NEILA</b>	ESP	Yamaha YZF-R7	25.050	36.417	27.784 +0.048	25.694 +0.251	<b>1'54.945</b>	1'55.244	10	0.299
12	<b>83 A. MADRIGAL</b>	MEX	Yamaha YZF-R7	25.511	36.407	27.877	25.565	<b>1'55.360</b>	1'55.360	12	
13	<b>8 T. RELPH</b>	AUS	Yamaha YZF-R7	25.280	36.658	28.013	25.506	<b>1'55.457</b>	1'55.457	13	
14	<b>20 N. RIVERA</b>	ESP	Yamaha YZF-R7	25.387 +0.086	36.634	27.959 +0.092	25.599	<b>1'55.579</b>	1'55.757	14	0.178
15	<b>99 I. CARRENO</b>	CHI	Yamaha YZF-R7	25.319	36.653	28.446	25.439	<b>1'55.857</b>	1'55.857	15	
16	<b>14 M. DOBBS</b>	USA	Yamaha YZF-R7	25.367	37.000 +0.046	28.185	25.820	<b>1'56.372</b>	1'56.418	16	0.046
17	<b>22 M. GUARINO</b>	ITA	Yamaha YZF-R7	25.531 +0.013	37.044	28.235	25.610	<b>1'56.420</b>	1'56.433	17	0.013
18	<b>26 K. HAND</b>	GBR	Yamaha YZF-R7	25.328	36.858	28.331	25.936	<b>1'56.453</b>	1'56.453	18	
19	<b>37 L. VIEILLARD</b>	FRA	Yamaha YZF-R7	25.369	36.882	28.378 +0.132	25.858 +0.074	<b>1'56.487</b>	1'56.693	19	0.206
20	<b>88 D. DAL ZOTTO</b>	ITA	Yamaha YZF-R7	25.583	36.570	28.492 +0.179	25.932	<b>1'56.577</b>	1'56.756	20	0.179
21	<b>16 L. MICHEL</b>	GER	Yamaha YZF-R7	25.554 +0.050	37.017	28.277	25.946	<b>1'56.794</b>	1'56.844	21	0.050
22	<b>12 M. SARAPUECH</b>	THA	Yamaha YZF-R7	25.382 +0.404	37.546	28.308	25.820	<b>1'57.056</b>	1'57.460	22	0.404
23	<b>19 A. OUREDNIKOVA</b>	CZE	Yamaha YZF-R7	25.602 +0.145	37.287	28.634 +0.048	25.688 +0.074	<b>1'57.211</b>	1'57.478	23	0.267
24	<b>41 A. BARALE</b>	ITA	Yamaha YZF-R7	25.386 +0.236	37.785	28.749	25.801 +0.005	<b>1'57.721</b>	1'57.962	24	0.241
25	<b>44 P. SOWA</b>	POL	Yamaha YZF-R7	25.768	37.707	28.907 +0.114	26.103	<b>1'58.485</b>	1'58.599	25	0.114
<b>Overall Ideal Time</b>				<b>24.657</b>	<b>35.769</b>	<b>27.358</b>	<b>25.017</b>	<b>1'52.801</b>			

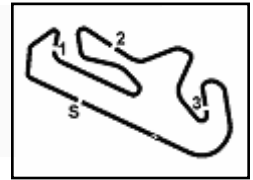
28/03/2026

These data/results cannot be reproduced, stored and/or transmitted in whole or in part by any manner of electronic, mechanical, photocopying, recording, broadcasting or otherwise now known or herein after developed without the previous express consent by the copyright owner, except for reproduction in daily press and regular printed publications on sale to the public within 60 days of the event related to those data/results and always provided that copyright symbol appears together as follows below.

© DORNA WSBK ORGANIZATION Srl 2026

FICR PERUGIA TIMING





**Pirelli Portuguese Round, 27-29 March 2026**  
**Chronological Analysis Warm Up 1**

<b>1° 6 M. HERRERA [1'52.885]</b>							
Lap	Seg1	Seg2	Seg3	Seg4	Lap Time	km/h	Local Time
		38.154	28.308	25.695			9:04'11.597
1	24.953	36.053	27.385	25.313	1'53.704	217,2	9:06'05.301
2	<b>24.657</b>	<b>35.769</b>	<b>27.358</b>	<b>25.101</b>	<b>1'52.885</b>	218,0	9:07'58.186
3	24.907	36.497	28.030	25.541	1'54.975	<b>218,5</b>	9:09'53.161
4	25.352	36.718	28.197	25.853	1'56.120	217,2	9:11'49.281

<b>2° 11 Y. CERPA [1'54.565]</b>							
Lap	Seg1	Seg2	Seg3	Seg4	Lap Time	km/h	Local Time
		38.393	28.327	25.862			9:03'51.409
1	24.847	36.812	27.863	25.516	1'55.038	220,2	9:05'46.447
2	25.086	36.619	29.481	32.911	2'04.097	<b>221,1</b>	9:07'50.544
3	25.079	36.600	27.825	25.541	1'55.045	216,3	9:09'45.589
4	<b>24.803</b>	<b>36.492</b>	<b>27.786</b>	<b>25.484</b>	<b>1'54.565</b>	218,0	9:11'40.154

<b>3° 64 S. SANCHEZ [1'54.572]</b>							
Lap	Seg1	Seg2	Seg3	Seg4	Lap Time	km/h	Local Time
		41.250	29.333	26.109			9:03'30.208
1	25.327	37.232	28.174	25.811	1'56.544	214,2	9:05'26.752
2	25.249	36.934	28.101	25.694	1'55.978	214,6	9:07'22.730
3	44.417	37.557	28.879	25.699	2'16.552	215,0	9:09'39.282
4	<b>24.915</b>	<b>36.526</b>	<b>27.925</b>	<b>25.206</b>	<b>1'54.572</b>	<b>219,4</b>	9:11'33.854

<b>4° 96 R. PONZIANI [1'54.585]</b>							
Lap	Seg1	Seg2	Seg3	Seg4	Lap Time	km/h	Local Time
		37.770	29.694	27.324			9:03'49.463
1	25.237	36.769	28.274	25.332	1'55.612	<b>219,4</b>	9:05'45.075
2	25.812	37.185	29.634	26.373	1'59.004	<b>219,4</b>	9:07'44.079
3	<b>24.878</b>	37.027	28.269	25.369	1'55.543	218,9	9:09'39.622
4	24.922	<b>36.442</b>	<b>27.905</b>	<b>25.316</b>	<b>1'54.585</b>	<b>219,4</b>	9:11'34.207

<b>5° 94 L. BOUDESSEUL [1'54.800]</b>							
Lap	Seg1	Seg2	Seg3	Seg4	Lap Time	km/h	Local Time
		37.962	29.940	26.258			9:03'47.532
1	25.472	37.547	28.355	25.432	1'56.806	219,8	9:05'44.338
2	<b>25.237</b>	<b>36.607</b>	<b>27.939</b>	<b>25.017</b>	<b>1'54.800</b>	<b>223,0</b>	9:07'39.138
3	26.105	37.880	30.981	28.917	2'03.883	218,5	9:09'43.021
4	25.267	37.115	28.609	26.076	1'57.067	218,9	9:11'40.088

<b>6° 15 C. JONES [1'54.877]</b>							
Lap	Seg1	Seg2	Seg3	Seg4	Lap Time	km/h	Local Time
		38.755	30.827	26.612			9:03'47.498
1	25.343	37.395	27.997	25.615	1'56.350	<b>221,1</b>	9:05'43.848
2	25.012	36.718	28.044	25.495	1'55.269	<b>221,1</b>	9:07'39.117
3	25.513	39.086	29.193	25.821	1'59.613	220,7	9:09'38.730
4	<b>24.781</b>	<b>36.709</b>	<b>27.984</b>	<b>25.403</b>	<b>1'54.877</b>	219,8	9:11'33.607

<b>7° 4 E. BONDI [1'54.955]</b>							
Lap	Seg1	Seg2	Seg3	Seg4	Lap Time	km/h	Local Time
		37.746	28.668	27.637			9:03'50.232
1	25.331	37.099	28.113	25.864	1'56.407	223,0	9:05'46.639
2	25.267	36.824	29.062	26.335	1'57.488	228,6	9:07'44.127
3	25.175	36.845	28.823	<b>25.561</b>	1'56.404	223,4	9:09'40.531
4	<b>24.994</b>	<b>36.229</b>	<b>28.048</b>	25.684	<b>1'54.955</b>	<b>229,6</b>	9:11'35.486

<b>8° 58 P. RAMOS [1'55.005]</b>							
Lap	Seg1	Seg2	Seg3	Seg4	Lap Time	km/h	Local Time
		41.273	29.230	25.932			9:06'32.809
1	25.569	36.959	28.155	<b>25.224</b>	1'55.907	217,2	9:08'28.716
2	<b>25.076</b>	<b>36.474</b>	<b>27.911</b>	25.544	<b>1'55.005</b>	<b>218,9</b>	9:10'23.721

<b>9° 66 K. DANAK [1'55.008]</b>							
Lap	Seg1	Seg2	Seg3	Seg4	Lap Time	km/h	Local Time
		38.089	28.594	25.882			9:02'50.195
1	25.133	36.784	28.160	<b>25.461</b>	1'55.538	214,6	9:04'45.733
2	25.389	36.966	28.585	25.956	1'56.896	<b>219,4</b>	9:06'42.629
3	25.154	36.531	27.987	25.845	1'55.517	213,7	9:08'38.146
4	<b>24.865</b>	<b>36.488</b>	<b>27.875</b>	25.780	<b>1'55.008</b>	214,2	9:10'33.154

<b>10° 36 B. NEILA [1'55.244]</b>							
Lap	Seg1	Seg2	Seg3	Seg4	Lap Time	km/h	Local Time
		38.971	30.952	26.461			9:03'47.094
1	25.453	36.754	27.870	25.942	1'56.019	<b>220,2</b>	9:05'43.113
2	25.239	36.556	<b>27.784</b>	<b>25.694</b>	1'55.273	212,9	9:07'38.386
3	27.278	37.663	29.144	25.724	1'59.809	212,9	9:09'38.195
4	<b>25.050</b>	<b>36.417</b>	27.832	25.945	<b>1'55.244</b>	215,4	9:11'33.439

<b>11° 46 P. RUIZ [1'55.359]</b>							
Lap	Seg1	Seg2	Seg3	Seg4	Lap Time	km/h	Local Time
		38.342	29.563	27.586			9:03'49.961
1	25.361	38.662	29.777	25.659	1'59.459	219,4	9:05'49.420
2	25.796	36.836	<b>27.858</b>	<b>25.342</b>	1'55.832	217,2	9:07'45.252
3	<b>25.054</b>	<b>36.302</b>	28.580	25.423	<b>1'55.359</b>	218,9	9:09'40.611
4	26.208	39.078	28.977	25.389	1'59.652	<b>221,6</b>	9:11'40.263

<b>12° 83 A. MADRIGAL [1'55.360]</b>							
Lap	Seg1	Seg2	Seg3	Seg4	Lap Time	km/h	Local Time
		38.266	29.388	26.409			9:03'47.985
1	26.220	36.939	28.241	25.640	1'57.040	218,9	9:05'45.025
2	25.532	37.071	28.595	25.567	1'56.765	220,2	9:07'41.790
3	26.348	37.818	28.771	25.737	1'58.674	218,0	9:09'40.464
4	<b>25.511</b>	<b>36.407</b>	<b>27.877</b>	<b>25.565</b>	<b>1'55.360</b>	<b>225,3</b>	9:11'35.824

<b>13° 8 T. RELPH [1'55.457]</b>							
Lap	Seg1	Seg2	Seg3	Seg4	Lap Time	km/h	Local Time
		39.381	29.330	26.206			9:06'32.065
1	25.668	37.001	28.253	25.712	1'56.634	213,7	9:08'28.699
2	<b>25.280</b>	<b>36.658</b>	<b>28.013</b>	<b>25.506</b>	<b>1'55.457</b>	<b>219,4</b>	9:10'24.156

<b>14° 20 N. RIVERA [1'55.757]</b>							
Lap	Seg1	Seg2	Seg3	Seg4	Lap Time	km/h	Local Time
		40.294	30.038	27.292			9:03'45.916
1	25.531	37.078	28.359	26.248	1'57.216	212,9	9:05'43.132
2	25.473	<b>36.634</b>	28.051	<b>25.599</b>	<b>1'55.757</b>	212,1	9:07'38.889
3	25.978	37.825	28.597	26.221	1'58.621	<b>217,2</b>	9:09'37.510
4	<b>25.387</b>	37.028	<b>27.959</b>	25.604	1'55.978	210,4	9:11'33.488

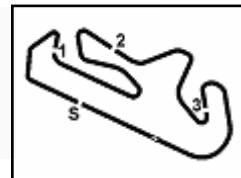
<b>15° 99 I. CARRENO [1'55.857]</b>							
Lap	Seg1	Seg2	Seg3	Seg4	Lap Time	km/h	Local Time
		40.532	29.997	27.408			9:03'45.858
1	26.468	38.107	28.744	25.754	1'59.073	210,0	9:05'44.931
2	25.414	37.096	28.494	25.804	1'56.808	219,8	9:07'41.739
3	25.574	37.710	28.757	25.831	1'57.872	<b>222,5</b>	9:09'39.611
4	<b>25.319</b>	<b>36.653</b>	<b>28.446</b>	<b>25.439</b>	<b>1'55.857</b>	218,0	9:11'35.468

<b>16° 14 M. DOBBS [1'56.418]</b>							
Lap	Seg1	Seg2	Seg3	Seg4	Lap Time	km/h	Local Time
		38.736	28.993	26.108			9:03'10.690
1	25.693	37.677	28.690	26.340	1'58.400	<b>214,2</b>	9:05'09.090
2	25.643	37.260	28.421	25.985	1'57.309	213,7	9:07'06.399
3	25.468	<b>37.000</b>	28.329	25.869	1'56.666	<b>214,2</b>	9:09'03.065

28/03/2026 P = Pits In/Out - C = Lap Time Cancelled

These data/results cannot be reproduced, stored and/or transmitted in whole or in part by any manner of electronic, mechanical, photocopying, recording, broadcasting or otherwise now known or herein after developed without the previous express consent by the copyright owner, except for reproduction in daily press and regular printed publications on sale to the public within 60 days of the event related to those data/results and always provided that copyright symbol appears together as follows below.

© DORNA WSBK ORGANIZATION Srl 2026



Portimao 4.492 m

**2 / 2**

**Pirelli Portuguese Round, 27-29 March 2026  
Chronological Analysis Warm Up 1**

4 **25.367** 37.046 **28.185** **25.820** **1'56.418** **214,2** 9:10'59.483

3 25.585 37.877 28.778 25.876 1'58.116 **217,2** 9:08'48.745  
4 **25.386** 38.286 28.925 **25.801** 1'58.398 **217,2** 9:10'47.143

**17° 22 M. GUARINO [1'56.433]**

Lap	Seg.1	Seg.2	Seg.3	Seg.4	Lap Time	km/h	Local Time
		40.242	30.236	26.966			9:03'46.091
1	25.841	37.647	28.327	25.825	1'57.640	215,0	9:05'43.731
2	<b>25.531</b>	37.741	28.672	25.847	1'57.791	216,7	9:07'41.522
3	26.054	38.060	28.895	25.656	1'58.665	214,6	9:09'40.187
4	25.544	<b>37.044</b>	<b>28.235</b>	<b>25.610</b>	<b>1'56.433</b>	<b>219,8</b>	9:11'36.620

**25° 44 P. SOWA [1'58.599]**

Lap	Seg.1	Seg.2	Seg.3	Seg.4	Lap Time	km/h	Local Time
		39.342	29.963	26.729			9:02'44.155
1	25.998	38.327	<b>28.907</b>	26.272	1'59.504	214,6	9:04'43.659
2	26.053	38.008	33.882	26.541	2'04.484	215,9	9:06'48.143
3	<b>25.768</b>	<b>37.707</b>	29.021	<b>26.103</b>	<b>1'58.599</b>	217,6	9:08'46.742
4	25.773	37.736	30.001	26.598	2'00.108	<b>218,5</b>	9:10'46.850

**18° 26 K. HAND [1'56.453]**

Lap	Seg.1	Seg.2	Seg.3	Seg.4	Lap Time	km/h	Local Time
		39.181	29.519	26.322			9:02'46.465
1	26.238	37.356	28.762	26.008	1'58.364	210,4	9:04'44.829
2	25.503	37.534	29.233	26.006	1'58.276	218,5	9:06'43.105
3	25.363	36.881	28.335	25.981	1'56.560	<b>218,9</b>	9:08'39.665
4	<b>25.328</b>	<b>36.858</b>	<b>28.331</b>	<b>25.936</b>	<b>1'56.453</b>	216,3	9:10'36.118

**19° 37 L. VIEILLARD [1'56.693]**

Lap	Seg.1	Seg.2	Seg.3	Seg.4	Lap Time	km/h	Local Time
		39.053	29.648	26.537			9:02'46.137
1	25.737	37.564	28.583	<b>25.858</b>	1'57.742	211,2	9:04'43.879
2	25.668	37.787	31.425	26.195	2'01.075	<b>220,7</b>	9:06'44.954
3	25.700	38.995	<b>28.378</b>	26.099	1'59.172	215,4	9:08'44.126
4	<b>25.369</b>	<b>36.882</b>	28.510	25.932	<b>1'56.693</b>	213,3	9:10'40.819

**20° 88 D. DAL ZOTTO [1'56.756]**

Lap	Seg.1	Seg.2	Seg.3	Seg.4	Lap Time	km/h	Local Time
		39.426	29.214	26.601			9:02'53.924
1	25.721	37.664	28.581	26.137	1'58.103	<b>221,1</b>	9:04'52.027
2	25.764	37.273	<b>28.492</b>	25.988	1'57.517	214,6	9:06'49.544
3	<b>25.583</b>	<b>36.570</b>	28.671	<b>25.932</b>	<b>1'56.756</b>	215,9	9:08'46.300
4	25.775	37.961	29.884	58.515	2'32.135P	215,0	9:11'18.435

**21° 16 L. MICHEL [1'56.844]**

Lap	Seg.1	Seg.2	Seg.3	Seg.4	Lap Time	km/h	Local Time
		38.255	29.270	26.146			9:02'46.672
1	26.375	37.419	28.652	<b>25.946</b>	1'58.392	215,4	9:04'45.064
2	26.309	37.369	28.702	26.050	1'58.430	213,7	9:06'43.494
3	25.604	<b>37.017</b>	<b>28.277</b>	<b>25.946</b>	<b>1'56.844</b>	<b>218,9</b>	9:08'40.338
4	<b>25.554</b>	37.254	28.453	26.263	1'57.524	<b>218,9</b>	9:10'37.862

**22° 12 M. SARAPUECH [1'57.460]**

Lap	Seg.1	Seg.2	Seg.3	Seg.4	Lap Time	km/h	Local Time
		40.232	29.611	26.680			9:04'37.230
1	25.786	<b>37.546</b>	<b>28.308</b>	<b>25.820</b>	<b>1'57.460</b>	212,5	9:06'34.690
2	<b>25.382</b>	37.962	33.154	1'12.884	2'49.382P	<b>215,0</b>	9:09'24.072

**23° 19 A. OUREDNIKOVA [1'57.478]**

Lap	Seg.1	Seg.2	Seg.3	Seg.4	Lap Time	km/h	Local Time
		39.437	29.874	26.385			9:02'54.697
1	26.022	37.824	29.134	26.042	1'59.022	217,2	9:04'53.719
2	25.747	<b>37.287</b>	28.682	25.762	<b>1'57.478</b>	218,9	9:06'51.197
3	<b>25.602</b>	37.481	28.859	<b>25.688</b>	1'57.630	<b>220,2</b>	9:08'48.827
4	25.702	37.827	<b>28.634</b>	25.950	1'58.113	216,3	9:10'46.940

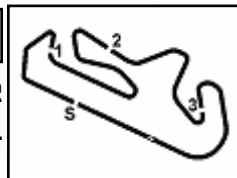
**24° 41 A. BARALE [1'57.962]**

Lap	Seg.1	Seg.2	Seg.3	Seg.4	Lap Time	km/h	Local Time
		40.516	29.923	26.722			9:02'53.546
1	25.807	38.486	28.909	25.919	1'59.121	214,2	9:04'52.667
2	25.622	<b>37.785</b>	<b>28.749</b>	25.806	<b>1'57.962</b>	216,3	9:06'50.629

28/03/2026 P = Pits In/Out - C = Lap Time Cancelled

These data/results cannot be reproduced, stored and/or transmitted in whole or in part by any manner of electronic, mechanical, photocopying, recording, broadcasting or otherwise now known or herein after developed without the previous express consent by the copyright owner, except for reproduction in daily press and regular printed publications on sale to the public within 60 days of the event related to those data/results and always provided that copyright symbol appears together as follows below.

© DORNA WSBK ORGANIZATION Srl 2026



Portimao 4.492 m

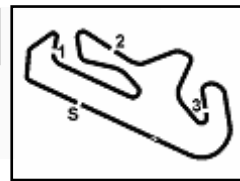
**Pirelli Portuguese Round, 27-29 March 2026**  
**Best Laps & Speeds**

No.	Rider Bike	Nat	Best Lap		FP		SP		WUP1									
			LL	SPD	LL	SPD	LL	SPD	LL	SPD								
1	<b>6 M. HERRERA</b> Yamaha YZF-R7	ESP	<b>1'52.572</b> 25	223,0	1'53.838 10	221,1	<b>1'52.572</b> 11	<b>223,0</b>	1'52.885 4	218,5								
2	<b>58 P. RAMOS</b> Yamaha YZF-R7	ESP	<b>1'52.988</b> 20	220,7	1'53.567 9	<b>220,7</b>	<b>1'52.988</b> 9	216,3	1'55.005 2	218,9								
3	<b>96 R. PONZIANI</b> Yamaha YZF-R7	ITA	<b>1'53.710</b> 24	220,2	1'54.491 10	<b>220,2</b>	<b>1'53.710</b> 10	<b>220,2</b>	1'54.585 4	219,4								
4	<b>36 B. NEILA</b> Yamaha YZF-R7	ESP	<b>1'54.141</b> 23	220,2	1'55.573 10	213,3	<b>1'54.141</b> 9	213,7	1'55.244 4	<b>220,2</b>								
5	<b>11 Y. CERPA</b> Yamaha YZF-R7	ESP	<b>1'54.149</b> 25	222,5	1'55.020 11	219,4	<b>1'54.149</b> 10	<b>222,5</b>	1'54.565 4	221,1								
6	<b>8 T. RELPH</b> Yamaha YZF-R7	AUS	<b>1'54.253</b> 23	219,4	1'55.807 10	217,6	<b>1'54.253</b> 11	217,2	1'55.457 2	<b>219,4</b>								
7	<b>94 L. BOUDESSEUL</b> Yamaha YZF-R7	FRA	<b>1'54.309</b> 23	223,0	1'54.962 10	220,2	<b>1'54.309</b> 9	218,5	1'54.800 4	<b>223,0</b>								
8	<b>64 S. SANCHEZ</b> Yamaha YZF-R7	ESP	<b>1'54.324</b> 27	224,8	1'55.523 12	<b>224,8</b>	<b>1'54.324</b> 11	217,6	1'54.572 4	219,4								
9	<b>46 P. RUIZ</b> Yamaha YZF-R7	ESP	<b>1'54.477</b> 24	221,6	1'55.055 10	218,9	<b>1'54.477</b> 10	211,2	1'55.359 4	<b>221,6</b>								
10	<b>20 N. RIVERA</b> Yamaha YZF-R7	ESP	<b>1'54.727</b> 27	223,9	1'55.270 12	<b>223,9</b>	<b>1'54.727</b> 11	214,6	1'55.757 4	217,2								
11	<b>83 A. MADRIGAL</b> Yamaha YZF-R7	MEX	<b>1'54.732</b> 22	225,3	1'54.950 9	223,0	<b>1'54.732</b> 9	222,5	1'55.360 4	<b>225,3</b>								
12	<b>4 E. BONDI</b> Yamaha YZF-R7	FRA	<b>1'54.791</b> 21	229,6	1'56.655 6	217,2	<b>1'54.791</b> 11	222,5	1'54.955 4	<b>229,6</b>								
13	<b>15 C. JONES</b> Yamaha YZF-R7	GBR	<b>1'54.877</b> 26	221,1	1'56.039 11	219,8	1'55.126 11	215,4	<b>1'54.877</b> 4	<b>221,1</b>								
14	<b>12 M. SARAPUECH</b> Yamaha YZF-R7	THA	<b>1'54.926</b> 20	220,2	1'56.009 9	218,5	<b>1'54.926</b> 9	<b>220,2</b>	1'57.460 2	215,0								
15	<b>66 K. DANAK</b> Yamaha YZF-R7	POL	<b>1'55.008</b> 25	221,6	1'55.759 11	217,6	1'55.345 10	<b>221,6</b>	<b>1'55.008</b> 4	219,4								
16	<b>37 L. VIEILLARD</b> Yamaha YZF-R7	FRA	<b>1'55.205</b> 25	220,7	1'58.285 10	219,8	<b>1'55.205</b> 11	219,4	1'56.693 4	<b>220,7</b>								
17	<b>99 I. CARRENO</b> Yamaha YZF-R7	CHI	<b>1'55.348</b> 23	222,5	1'57.361 10	220,2	<b>1'55.348</b> 9	215,9	1'55.857 4	<b>222,5</b>								
18	<b>88 D. DALZOTTO</b> Yamaha YZF-R7	ITA	<b>1'55.694</b> 26	221,1	1'56.670 12	<b>221,1</b>	<b>1'55.694</b> 10	212,5	1'56.756 4	<b>221,1</b>								
19	<b>22 M. GUARINO</b> Yamaha YZF-R7	ITA	<b>1'56.086</b> 23	222,0	1'58.128 8	219,8	<b>1'56.086</b> 11	<b>222,0</b>	1'56.433 4	219,8								
20	<b>14 M. DOBBS</b> Yamaha YZF-R7	USA	<b>1'56.093</b> 25	223,4	1'56.679 11	<b>223,4</b>	<b>1'56.093</b> 10	211,6	1'56.418 4	214,2								
21	<b>19 A. OUREDNIKOVA</b> Yamaha YZF-R7	CZE	<b>1'56.274</b> 28	223,0	1'56.685 12	<b>223,0</b>	<b>1'56.274</b> 12	217,2	1'57.478 4	220,2								
22	<b>41 A. BARALE</b> Yamaha YZF-R7	ITA	<b>1'56.395</b> 27	221,6	1'57.526 12	<b>221,6</b>	<b>1'56.395</b> 11	214,2	1'57.962 4	217,2								
23	<b>26 K. HAND</b> Yamaha YZF-R7	GBR	<b>1'56.453</b> 26	218,9	1'56.853 11	216,3	1'56.818 11	210,8	<b>1'56.453</b> 4	<b>218,9</b>								
24	<b>16 L. MICHEL</b> Yamaha YZF-R7	GER	<b>1'56.844</b> 19	219,8	1'58.004 11	219,4	1'58.489 4	<b>219,8</b>	<b>1'56.844</b> 4	218,9								
25	<b>44 P. SOWA</b> Yamaha YZF-R7	POL	<b>1'57.284</b> 27	219,8	1'58.219 11	<b>219,8</b>	<b>1'57.284</b> 12	216,3	1'58.599 4	218,5								

28/03/2026

These data/results cannot be reproduced, stored and/or transmitted in whole or in part by any manner of electronic, mechanical, photocopying, recording, broadcasting or otherwise now known or herein after developed without the previous express consent by the copyright owner, except for reproduction in daily press and regular printed publications on sale to the public within 60 days of the event related to those data/results and always provided that copyright symbol appears together as follows below.

© DORNA WSBK ORGANIZATION Srl 2026

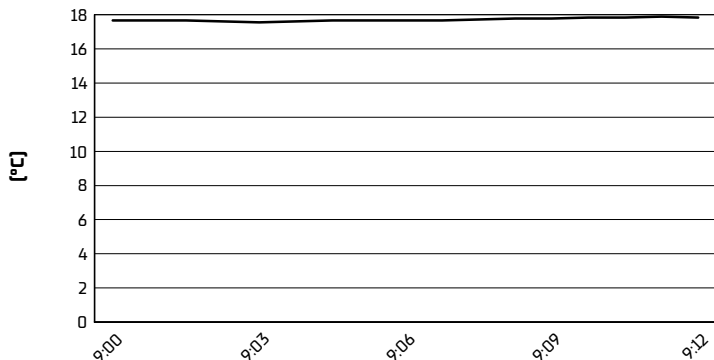


Portimao 4.492 m

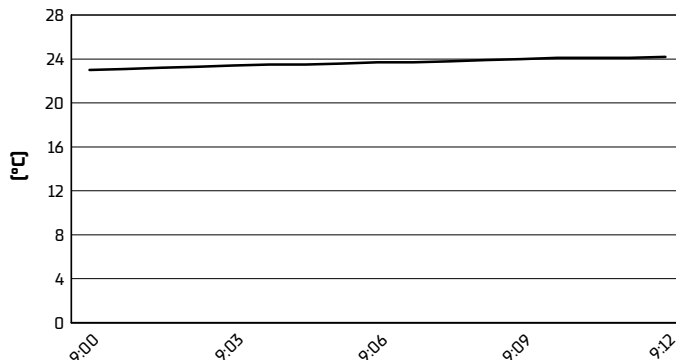
**Pirelli Portuguese Round, 27-29 March 2026**  
**Weather Report Warm Up 1**

Session started 09:00 - Session ended 9:13

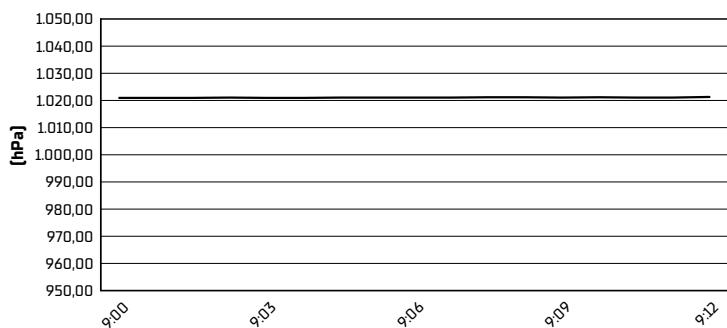
**Air Temperature**



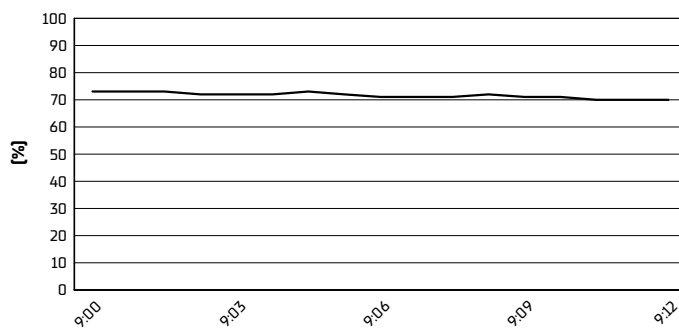
**Track Temperature**



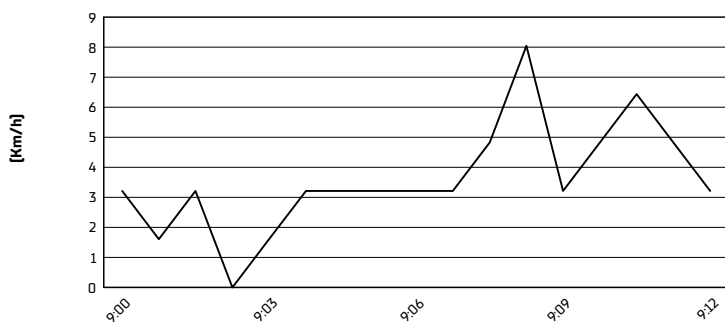
**Air Pressure**



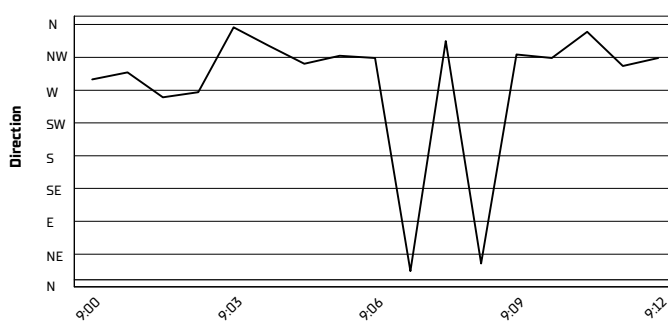
**Humidity**



**Wind Speed**



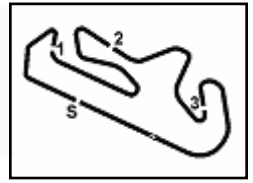
**Wind Direction**



28/03/2026

These data/results cannot be reproduced, stored and/or transmitted in whole or in part by any manner of electronic, mechanical, photocopying, recording, broadcasting or otherwise now known or herein after developed without the previous express consent by the copyright owner, except for reproduction in daily press and regular printed publications on sale to the public within 60 days of the event related to those data/results and always provided that copyright symbol appears together as follows below.

© DORNA WSBK ORGANIZATION Srl 2026



Portimao 4.492 m

**Pirelli Portuguese Round, 27-29 March 2026**  
**Starting Grid - Race 1 (11 Laps x 4,492 km = 49,412 km)**

1	1	<b>6</b> HERRERA M. Yamaha 1'52.572	2	<b>58</b> RAMOS P. Yamaha 1'52.988	3	<b>96</b> PONZIANI R. Yamaha 1'53.710
2	4	<b>36</b> NEILA B. Yamaha 1'54.141	5	<b>11</b> CERPA Y. Yamaha 1'54.149	6	<b>8</b> RELPH T. Yamaha 1'54.253
3	7	<b>94</b> BOUDESSEUL L. Yamaha 1'54.309	8	<b>64</b> SANCHEZ S. Yamaha 1'54.324	9	<b>46</b> RUIZ P. Yamaha 1'54.477
4	10	<b>20</b> RIVERA N. Yamaha 1'54.727	11	<b>83</b> MADRIGAL A. Yamaha 1'54.732	12	<b>4</b> BONDI E. Yamaha 1'54.791
5	13	<b>12</b> SARAPUECH M. Yamaha 1'54.926	14	<b>37</b> VIEILLARD L. Yamaha 1'55.205	15	<b>66</b> DANAK K. Yamaha 1'55.345
6	16	<b>99</b> CARRENO I. Yamaha 1'55.348	17	<b>88</b> DAL ZOTTO D. Yamaha 1'55.694	18	<b>14</b> DOBBS M. Yamaha 1'56.093
7	19	<b>19</b> OUREDNIKOVA A. Yamaha 1'56.274	20 *	<b>15</b> JONES C. Yamaha 1'55.126	21	<b>41</b> BARALE A. Yamaha 1'56.395
8	22	<b>26</b> HAND K. Yamaha 1'56.818	23	<b>44</b> SOWA P. Yamaha 1'57.284	24	<b>16</b> MICHEL L. Yamaha 1'58.489
9	25 *	<b>22</b> GUARINO M. Yamaha 1'56.086				

N.15 (Jones C.) has been penalized with a drop of 6 grid positions - Slow on racing line during Superpole  
N.22 (Guarino M.) has been penalized with a drop of 6 grid positions - Slow on racing line during Superpole

28/03/2026 The Race Director: **Stefano Carloia**

\* = Penalized

These data/results cannot be reproduced, stored and/or transmitted in whole or in part by any manner of electronic, mechanical, photocopying, recording, broadcasting or otherwise now known or herein after developed without the previous express consent by the copyright owner, except for reproduction in daily press and regular printed publications on sale to the public within 60 days of the event related to those data/results and always provided that copyright symbol appears together as follows below. © DORNA WSBK ORGANIZATION Srl 2026